

VERSION 1.3.

2022

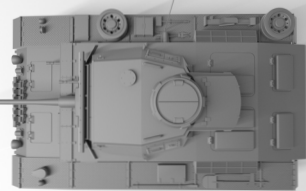


Panzer III

Panzerkampfwagen III

PzKpfw III

1:10



BUILD GUIDE

www.3dtisk.store

Build Guide

3d task

PRINTED ON THE ORIGINAL PRUSA I3 MK3S + 3D PRINTER

Print settings in PrusaSlicer-2.4.1

Print setting: **0.20mm** (for connecting parts **0.15mm** more accurate eg insertion of ball bearings)

Filling: 15% (for moving parts 80% eg gearbox)

Filament: **Prusa PLA**

Files STL: **246 ks**



Printing with a minimum number of struts, intuitive easy construction.

Fasteners, electro

FASTENERS

Screws

M3 x 15mm

M3 x 10mm

M3 x 50 mm 2ks

M3 matka



Bearings:

Ball-bearing 9x24x7mm 4ks

Ball-bearing 8x16x5mm 22ks

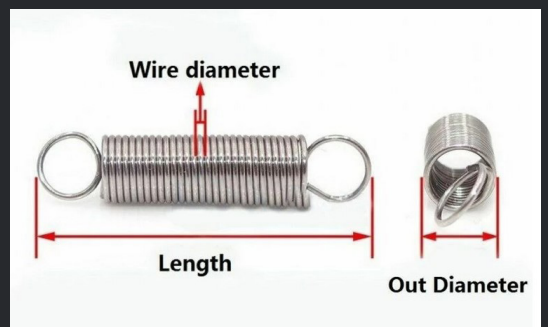
Ball-bearing 7x13x4mm 6ks



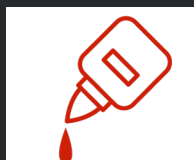
Springs:

0,5 mm, 30 mm, 5 mm

Binding wire: tl. 1 mm



Super glue



ELECTRICAL COMPONENTS

Engines:

DC motors 540

Operating voltage 5-12V

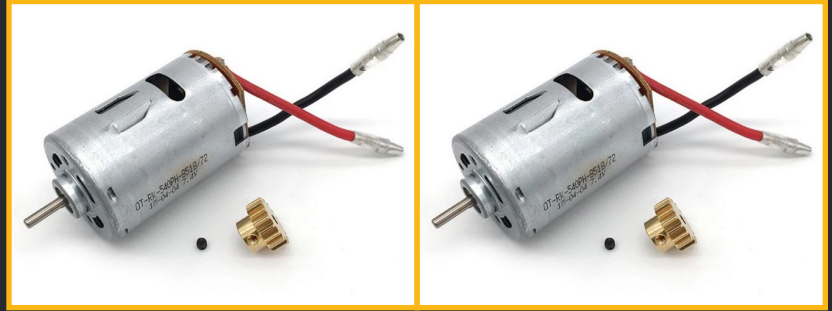
Shaft length 9 mm

Dimensions (Ø x d) 35.8 mm x 50 mm

Rated voltage 7,2 V/DC

Shaft diameter 3,17 mm

Pinion 17T



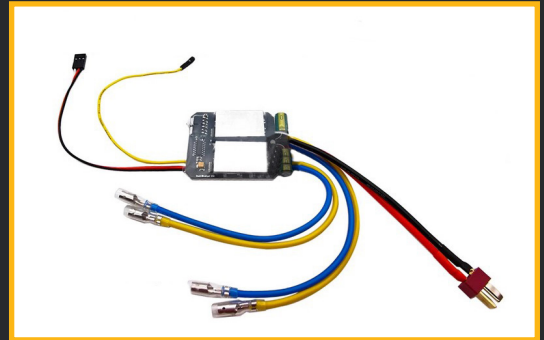
Regulators:

Bidirectional electric speed controller 40A 2x, for DC motors.

Here is the solution in one: https://www.aliexpress.com/item/1005003605105604.html?spm=a2g0o.order_list.0.0.36281802RPbP2Y

https://www.aliexpress.com/item/1005001415643140.html?spm=a2g0o.order_list.0.0.36281802RPbP2Y

<https://www.youtube.com/watch?v=4Z-j6bUJTQ8>



Serve:

This servo was used:

https://www.aliexpress.com/item/1005001415643140.html?spm=a2g0o.order_list.0.0.36281802RPbP2Y

https://www.aliexpress.com/item/1005001415643140.html?spm=a2g0o.order_list.0.0.36281802RPbP2Y

The tower servo must be adjusted according to these instructions, for example:

<https://www.youtube.com/watch?v=4Z-j6bUJTQ8>



DIAGRAM

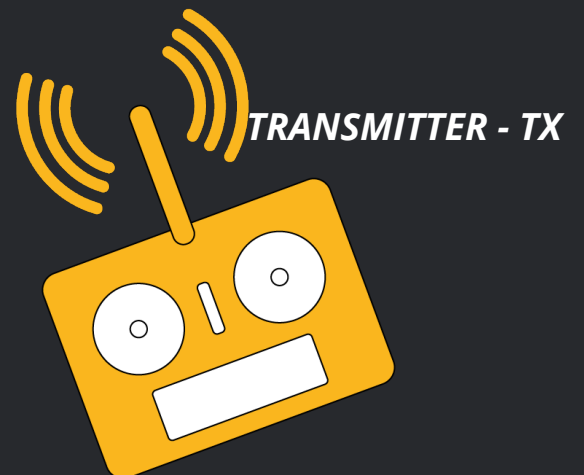
SERVO-1
Servo for positioning the cannon

SERVO-2
Modified servo for rotating the tower

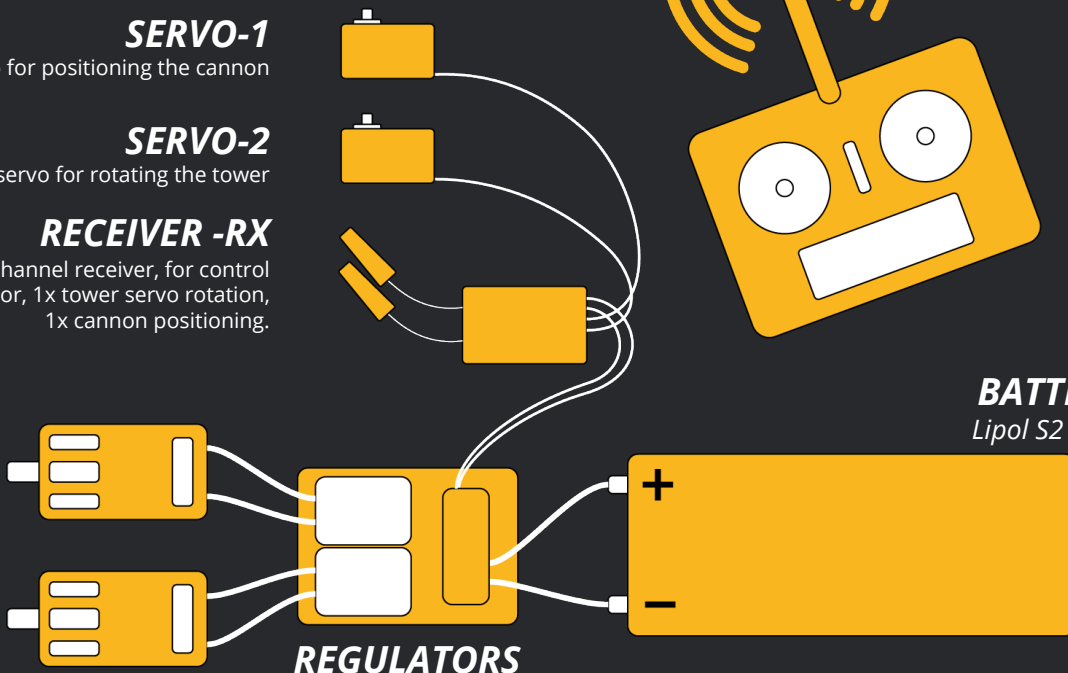
RECEIVER -RX
At least 4 channel receiver, for control
2x motor, 1x tower servo rotation,
1x cannon positioning.

ENGINES
DC motors 540

REGULATORS



BATTERY
Lipol S2 7,4 V



Panzer III

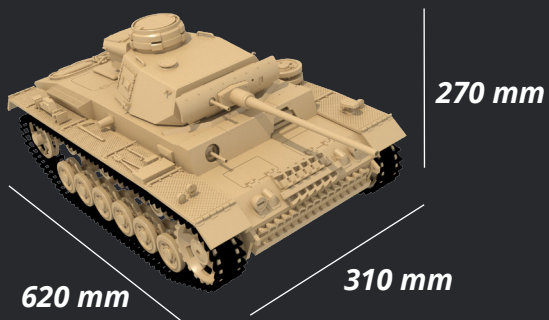
Panzerkampfwagen III

MODEL PARAMETERS

Scale: 1:10

Dimension: 620 x 310 x 270 mm

Weight: 3,3 Kg



III 1234567890

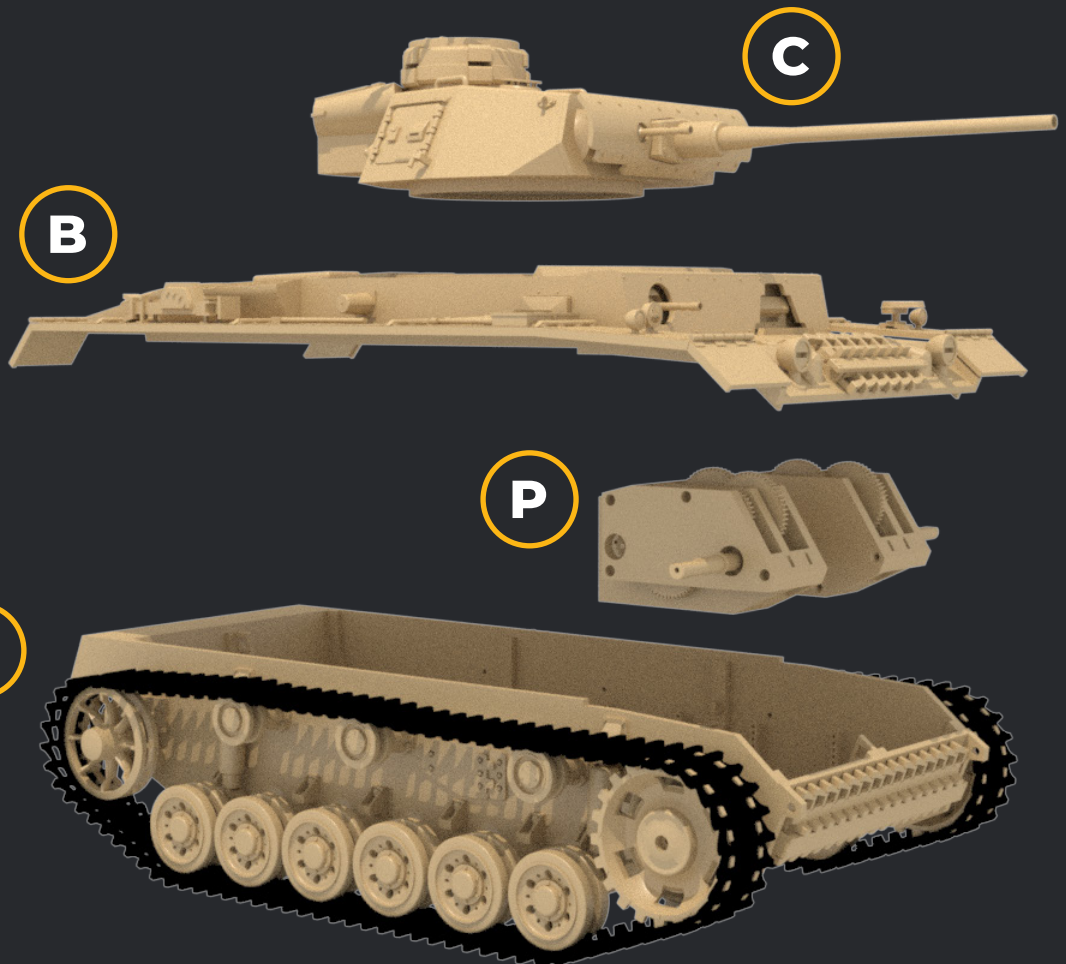
D

C

B

P

A



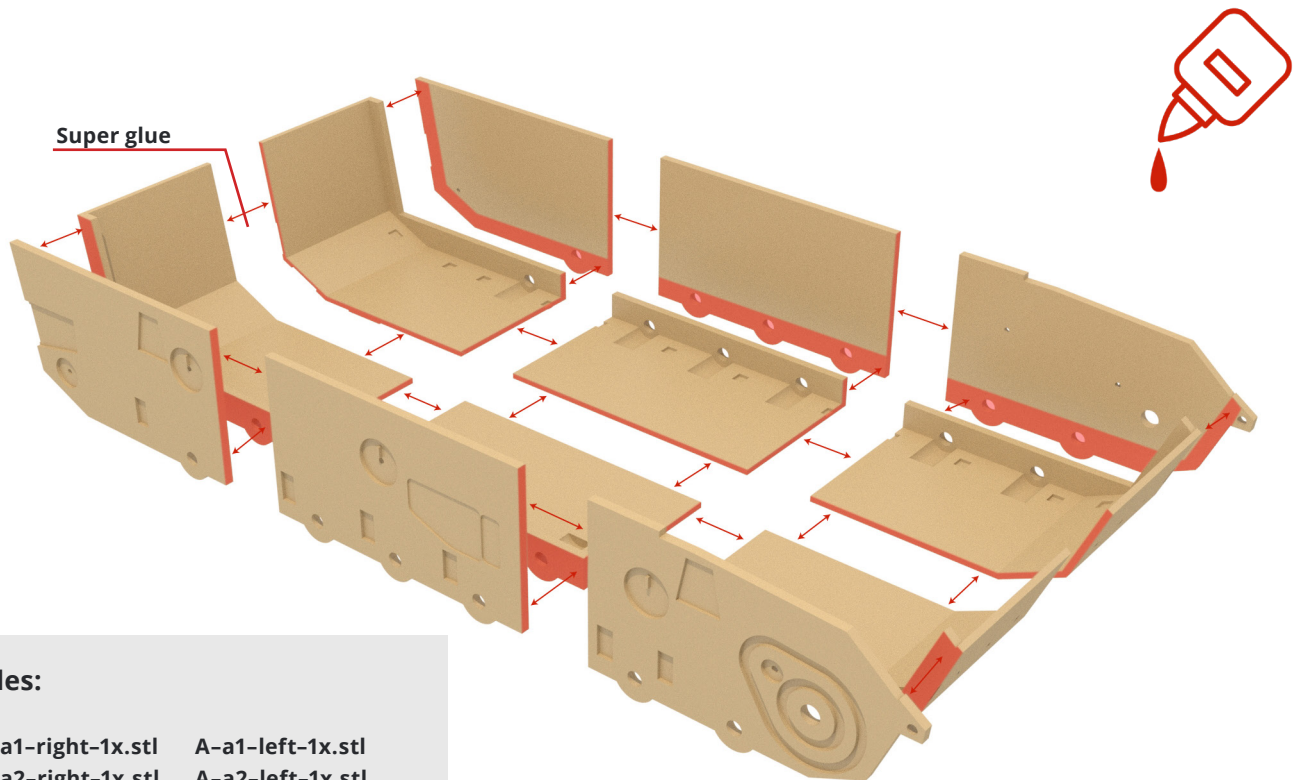
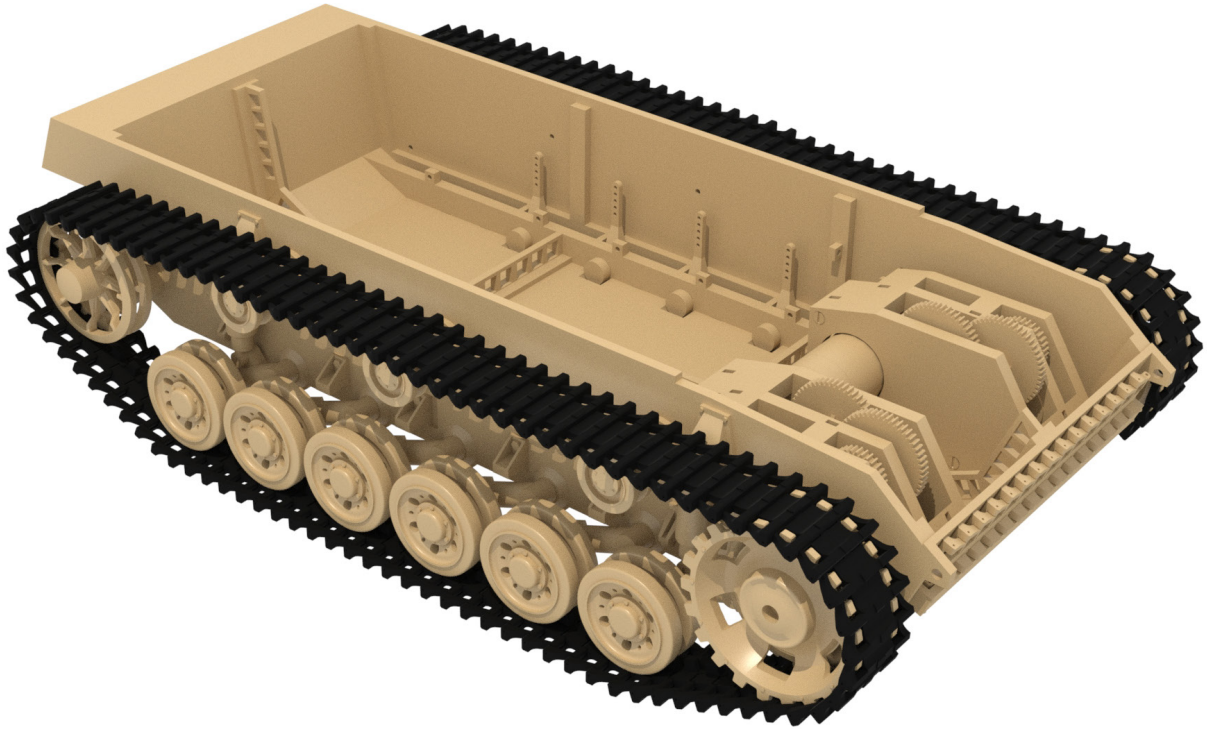
autor: Petr Školař

web: www.3dtiks.store

e-mail: 3dtisk@gpstudio.cz

Panzer III

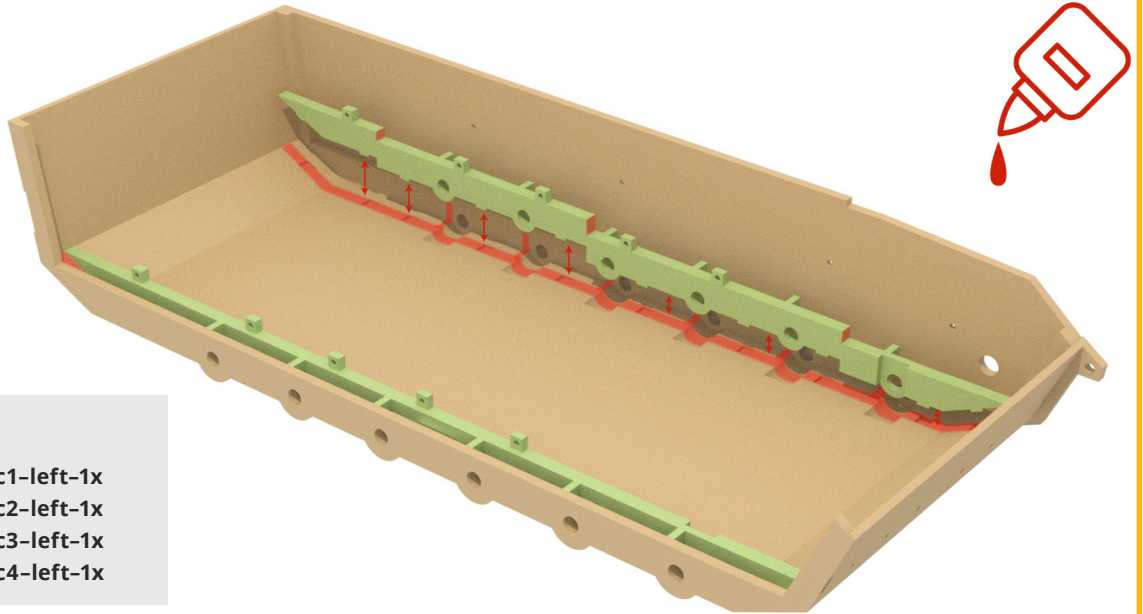
A



Files:

A-a1-right-1x.stl	A-a1-left-1x.stl
A-a2-right-1x.stl	A-a2-left-1x.stl
A-a3-right-1x.stl	A-a3-left-1x.stl
A-a4-right-1x.stl	A-a4-left-1x.stl
A-a5-right-1x.stl	A-a5-left-1x.stl
A-a6-right-1x.stl	A-a6-left-1x.stl

A



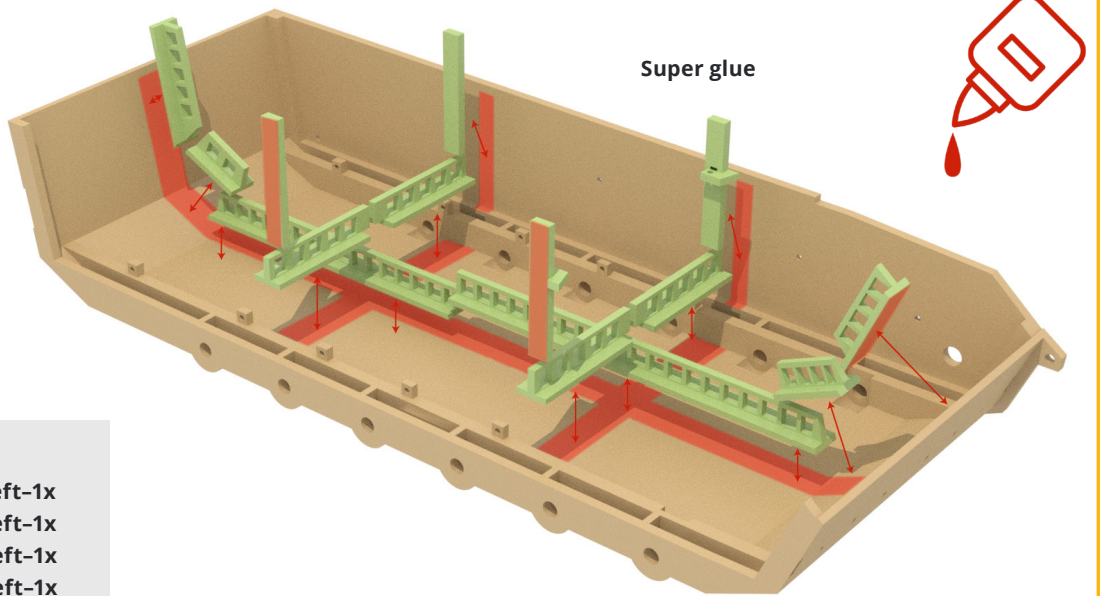
Super glue

Files:

- A-c1-right-1x A-c1-left-1x
- A-c2-right-1x A-c2-left-1x
- A-c3-right-1x A-c3-left-1x
- A-c4-right-1x A-c4-left-1x

Files:

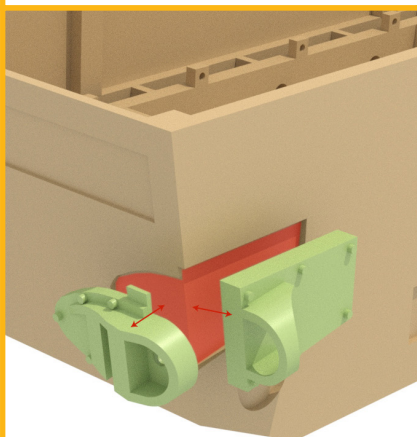
- A-d1-center-1x
- A-d2-center-1x
- A-d3-center-1x
- A-d4-center-1x
- A-d5-center-1x
- A-d6-center-1x



Super glue

Files:

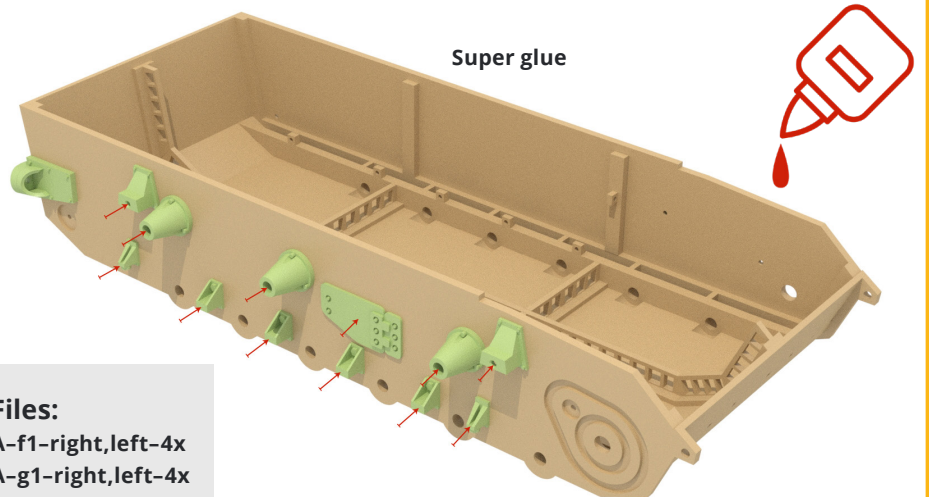
- A-d1-right-1x A-d1-left-1x
- A-d2-right-1x A-d2-left-1x
- A-d3-right-1x A-d3-left-1x
- A-d4-right-1x A-d4-left-1x



Super glue

Files:

- A-e1-right-1x
- A-e1-left-1x
- A-e2-right-1x
- A-e2-left-1x



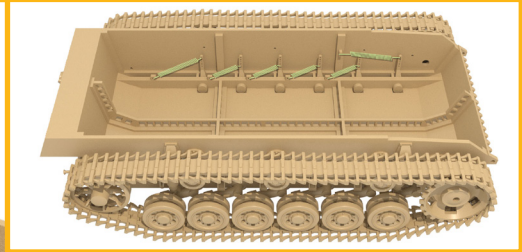
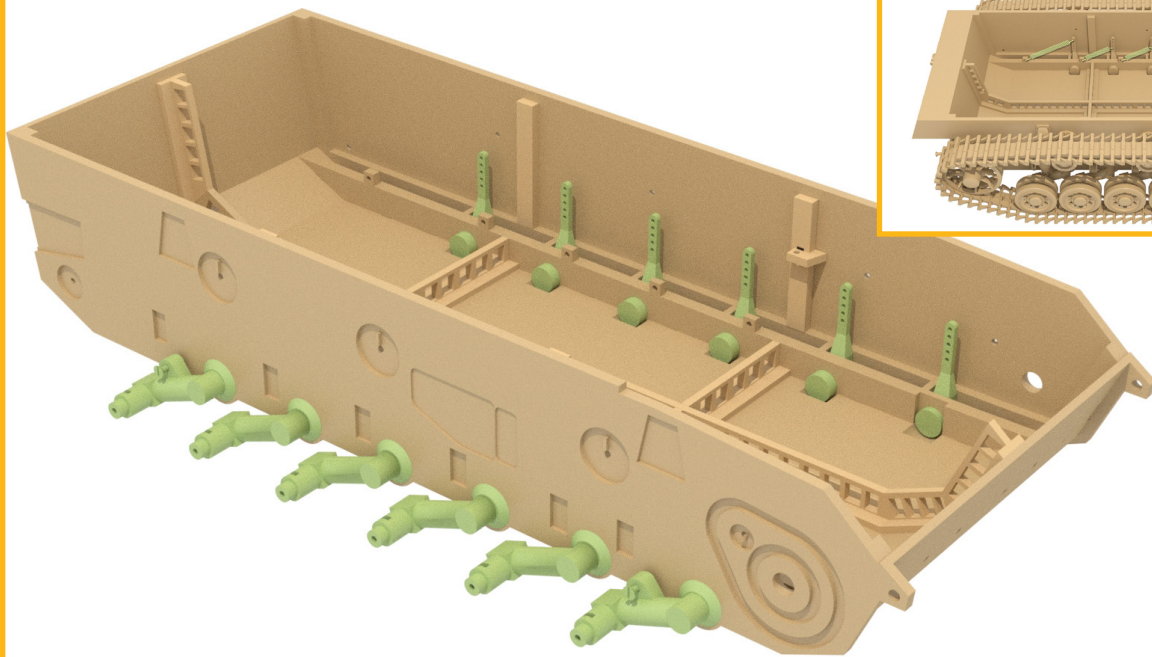
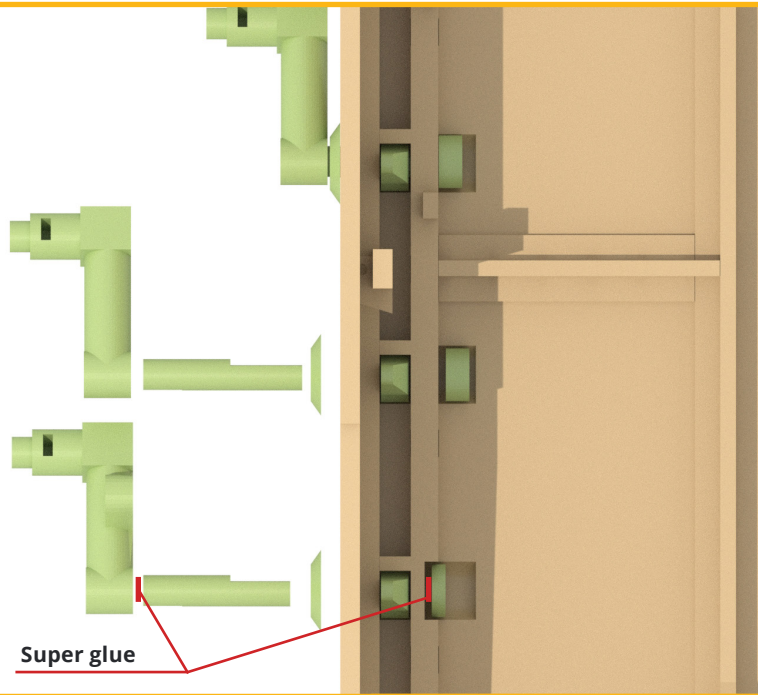
Super glue

Files:

- A-f1-right, left-4x
- A-g1-right, left-4x
- A-h1-right, left-8x
- A-i1-right, left-6x
- A-j1-right-1x
- A-j1-left-1x

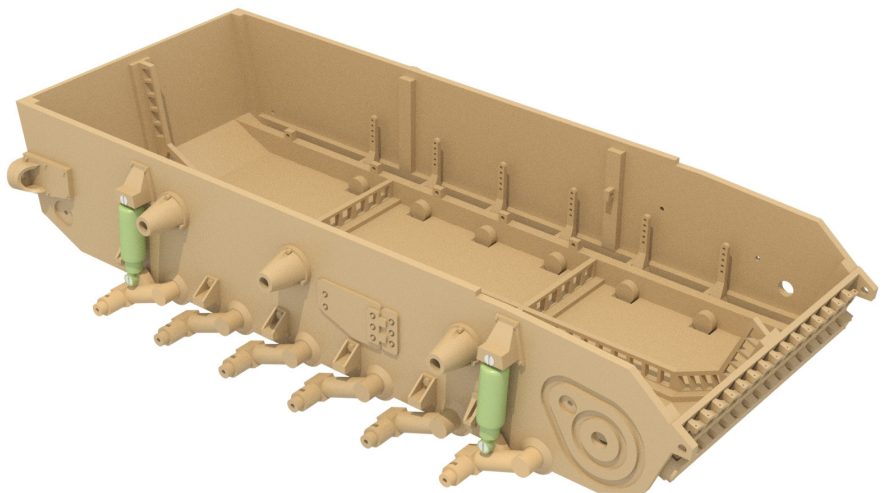
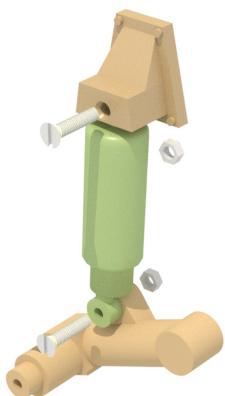
Files:

- A-k1-right-4x
- A-k1-left-4x
- A-k2-1-right,left-10x
- A-k2-2-right,left-2x
- A-k3-right, Left-12x
- A-k4-right-6x
- A-k4-left-6x
- A-k5-1-right,left-10x
- A-k5-2-right,left-2x
- A-k6-right-2x
- A-k6-left-2x



Files:

- A-l1-right,left-4x
- A-l2-right,left-4x

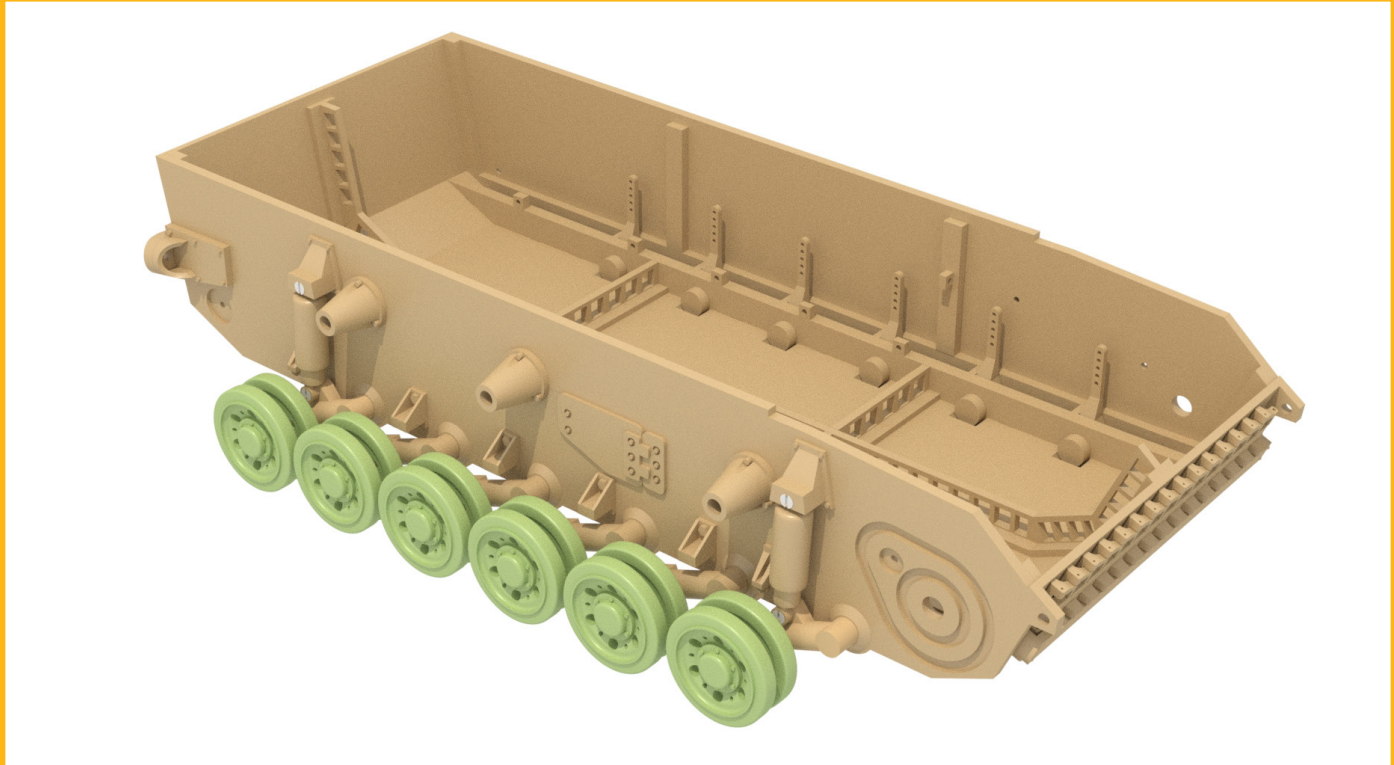


Files:
 A-m1-right,left-12x
 A-m2-right,left-12x

Super glue

Files:
 A-m3-right,left-12x

Super glue

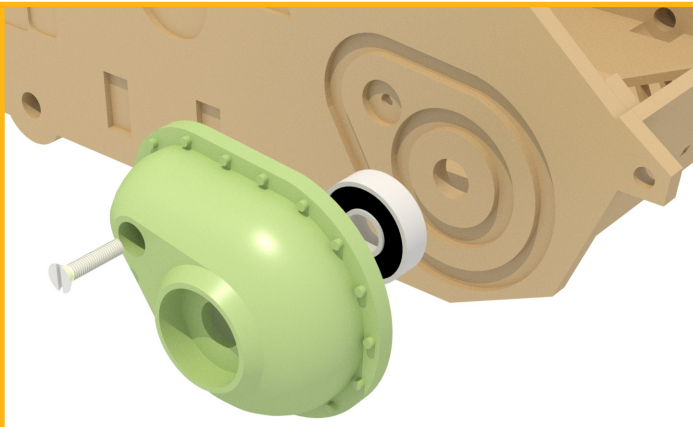


Files:
 A-n1-right,left-6x
 A-n2-right,left-6x
 A-n3-right,left-6x
 A-n4-right,left-6x

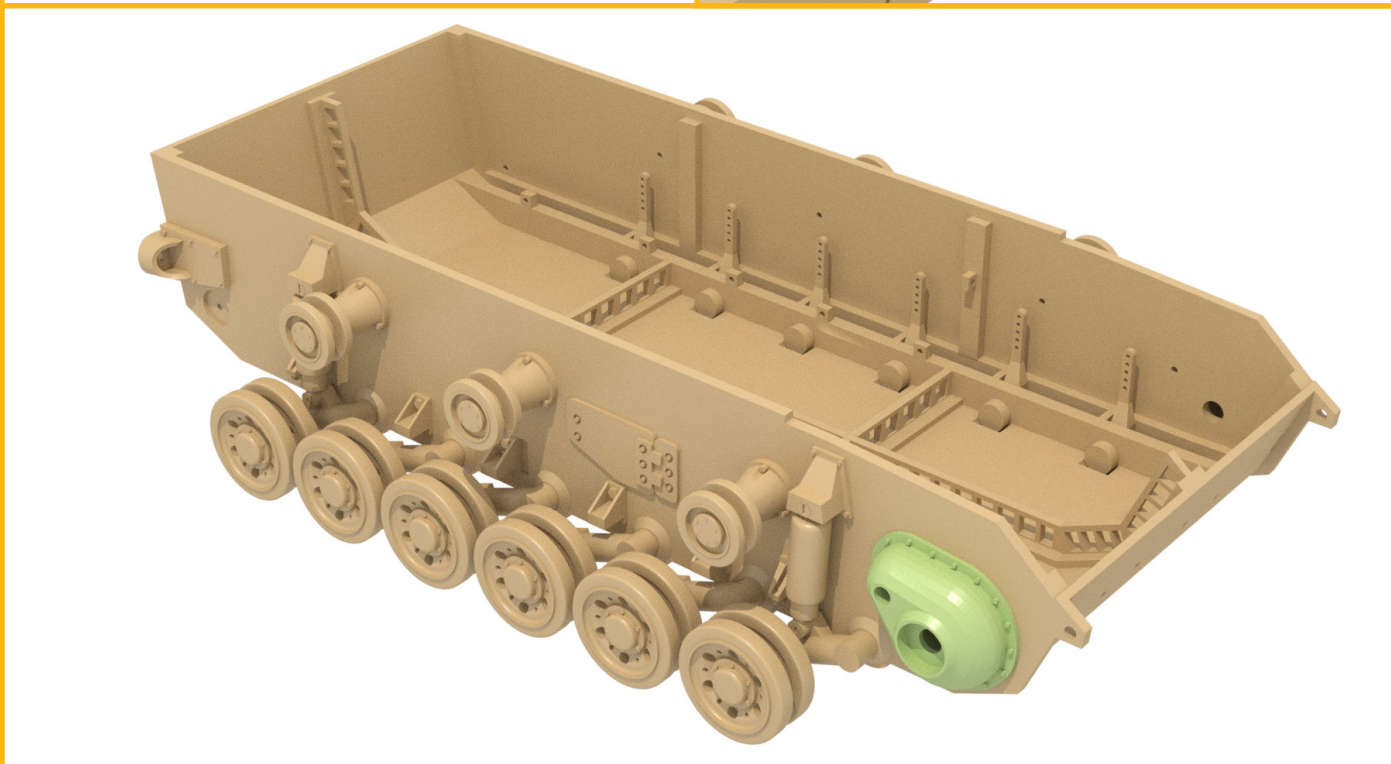
Ložisko 7x13x4mm - 12x

Super glue

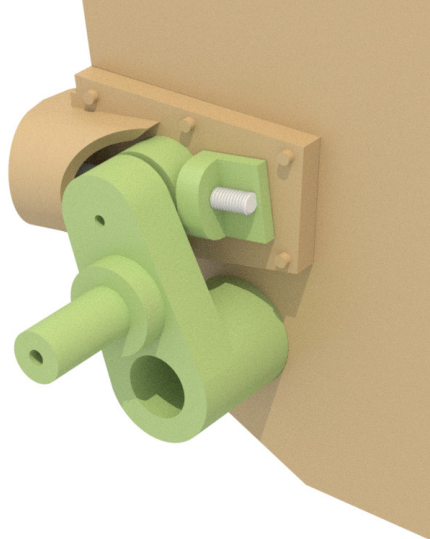
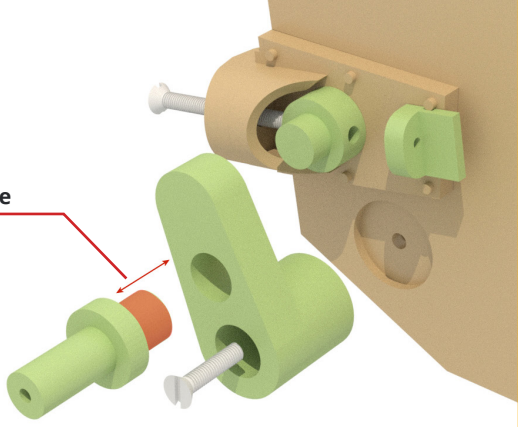




Files:
A-o1-right,left-2x
Bearings 9x7x24mm - 2x



Super glue



Files:
A-p1-right,left-2x
A-p2-right,left-2x
A-p3-right,left-2x
A-p4-right,left-2x

A

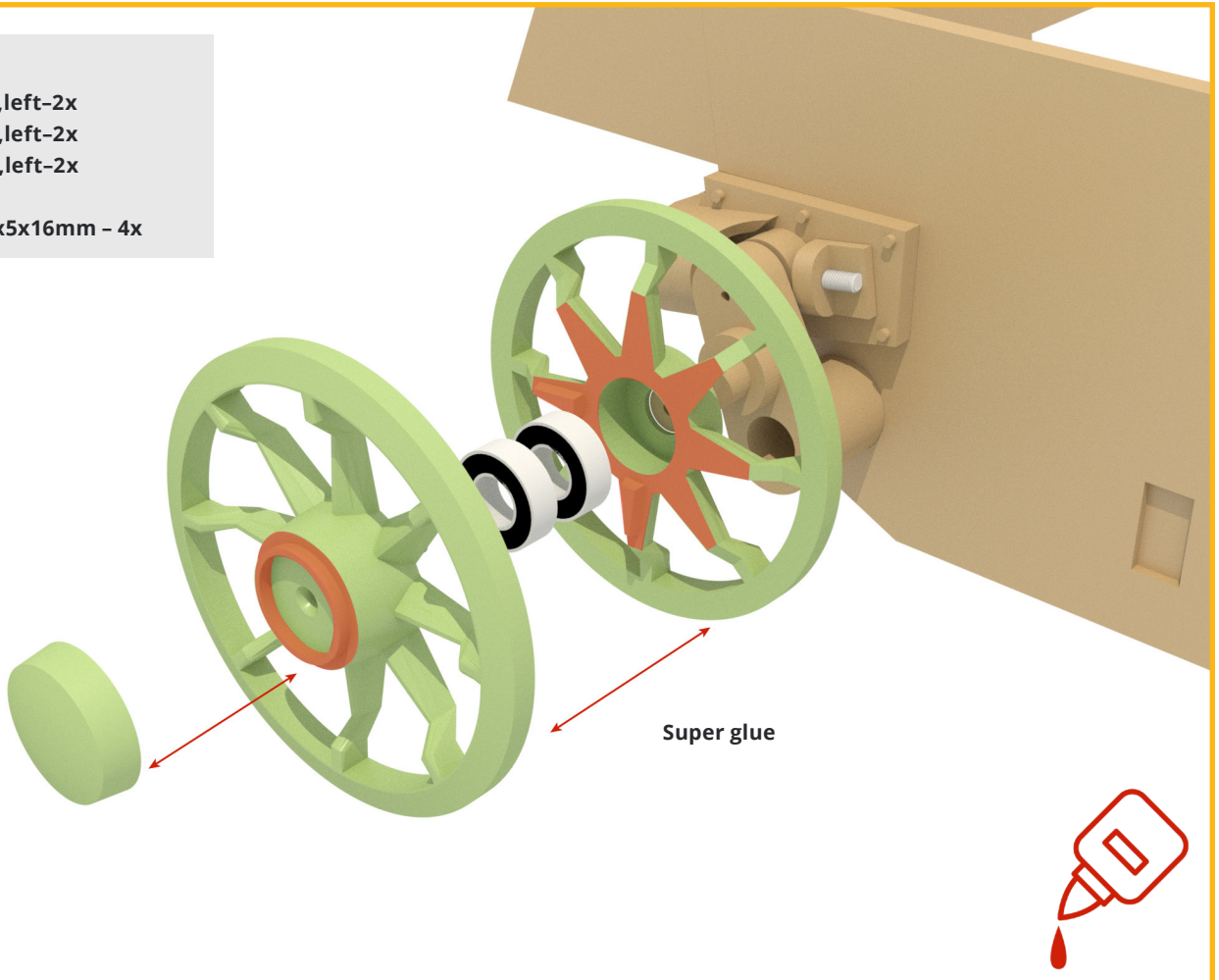
Files:

A-q1-right,left-2x

A-q2-right,left-2x

A-q3-right,left-2x

Bearings 8x5x16mm - 4x



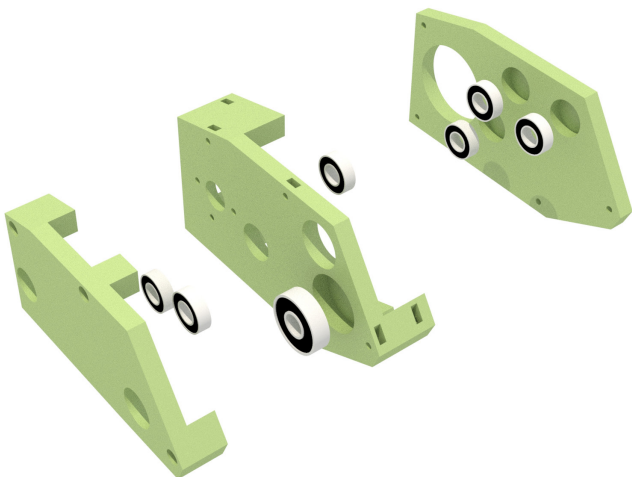
P

Files:

P-a1-right-1x P-a2-left-1x

P-a1-left-1x P-a3-right-1x

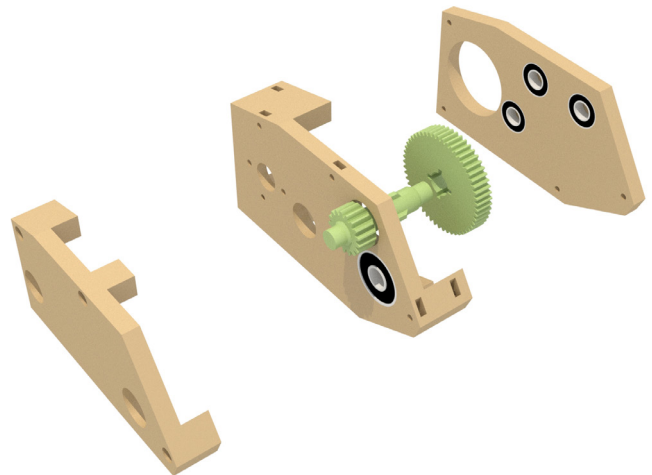
P-a2-right-1x P-a3-left-1x



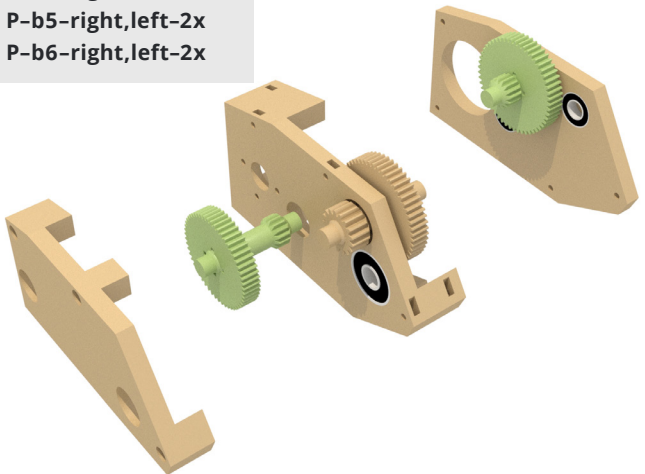
Files:

P-b1-right,left-2x

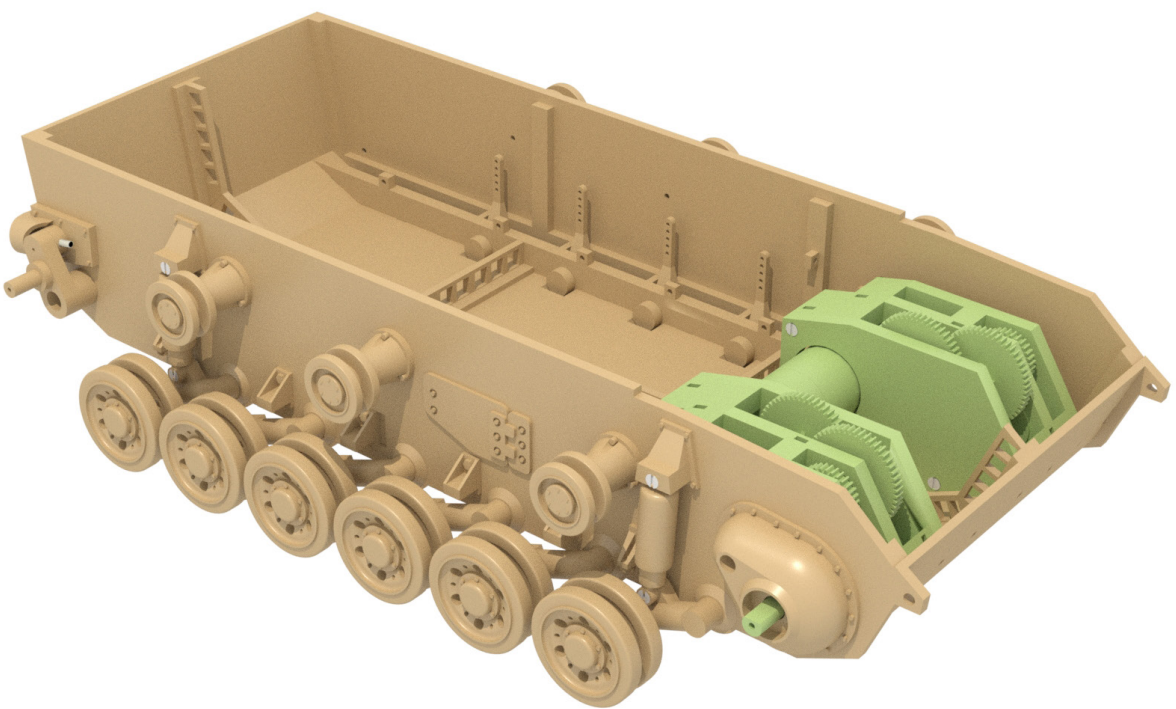
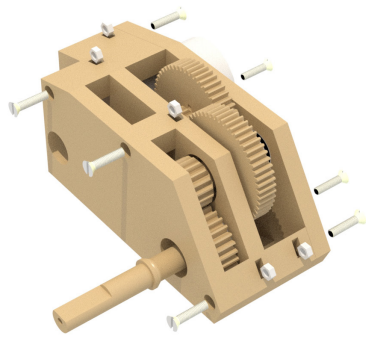
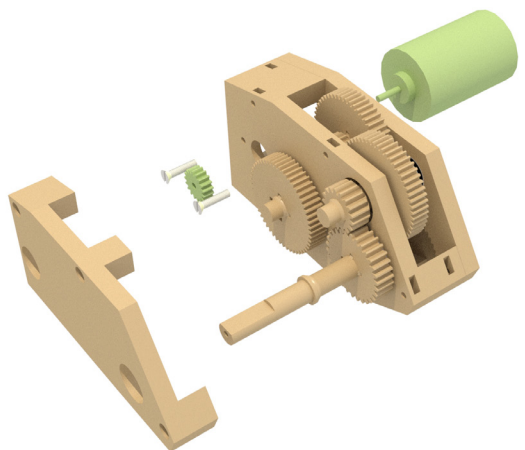
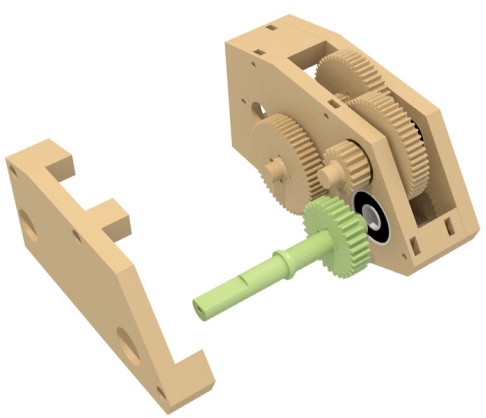
P-b2-right,left-2x



Files:
P-b3-right,left-2x
P-b4-right,left-2x
P-b5-right,left-2x
P-b6-right,left-2x



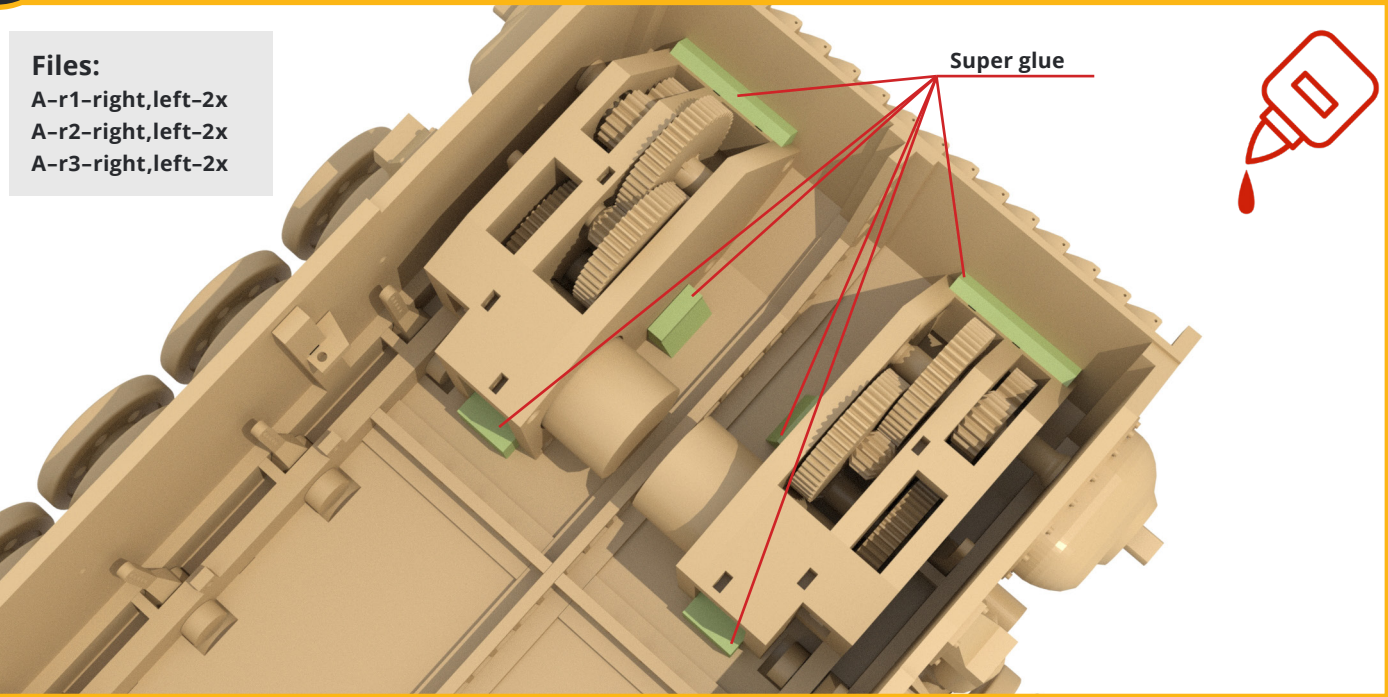
Files:
P-b7-right,left-2x
P-b8-right,left-2x



A

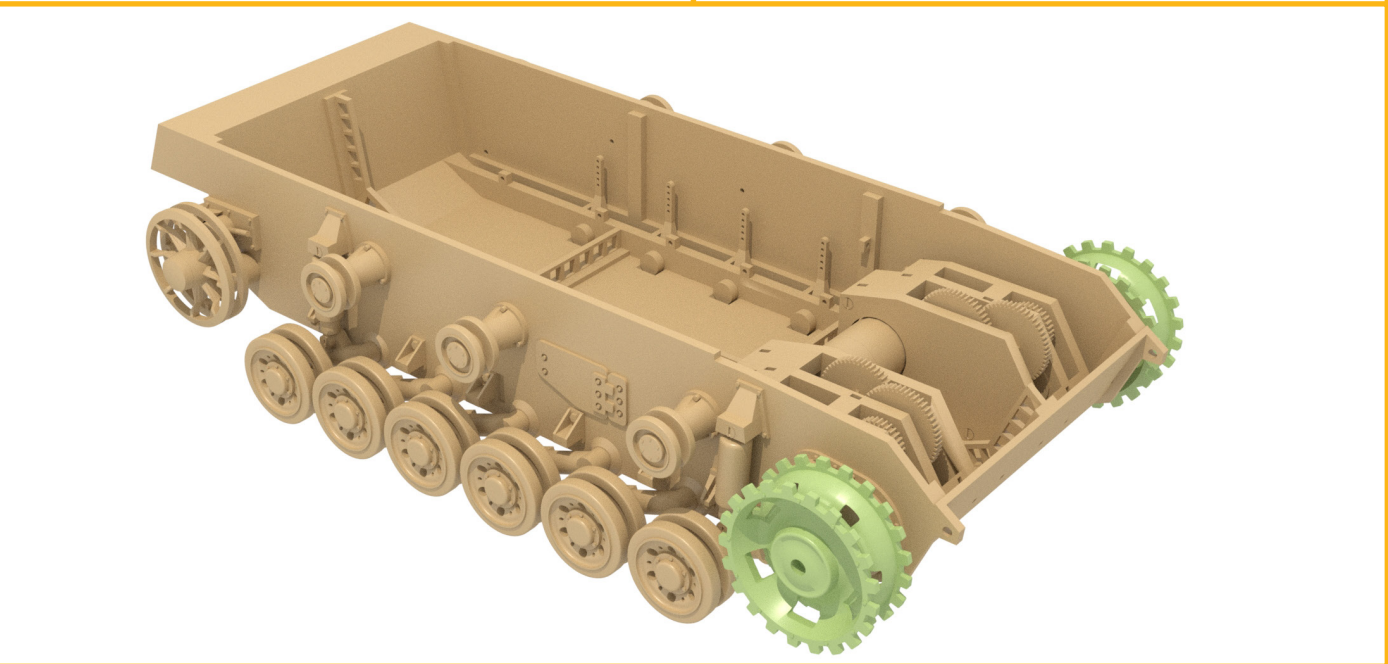
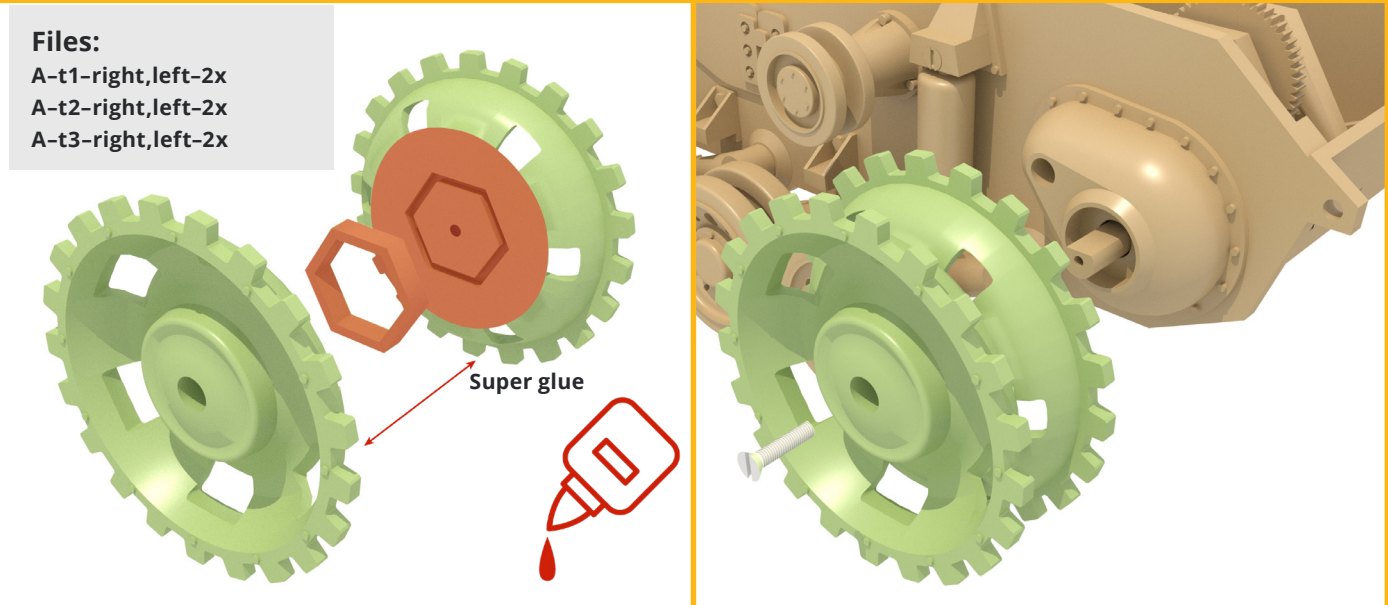
Files:

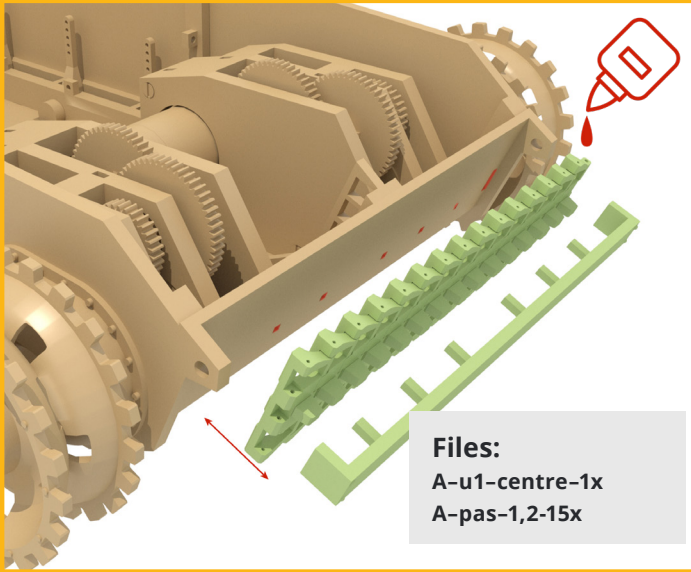
- A-r1-right,left-2x
- A-r2-right,left-2x
- A-r3-right,left-2x



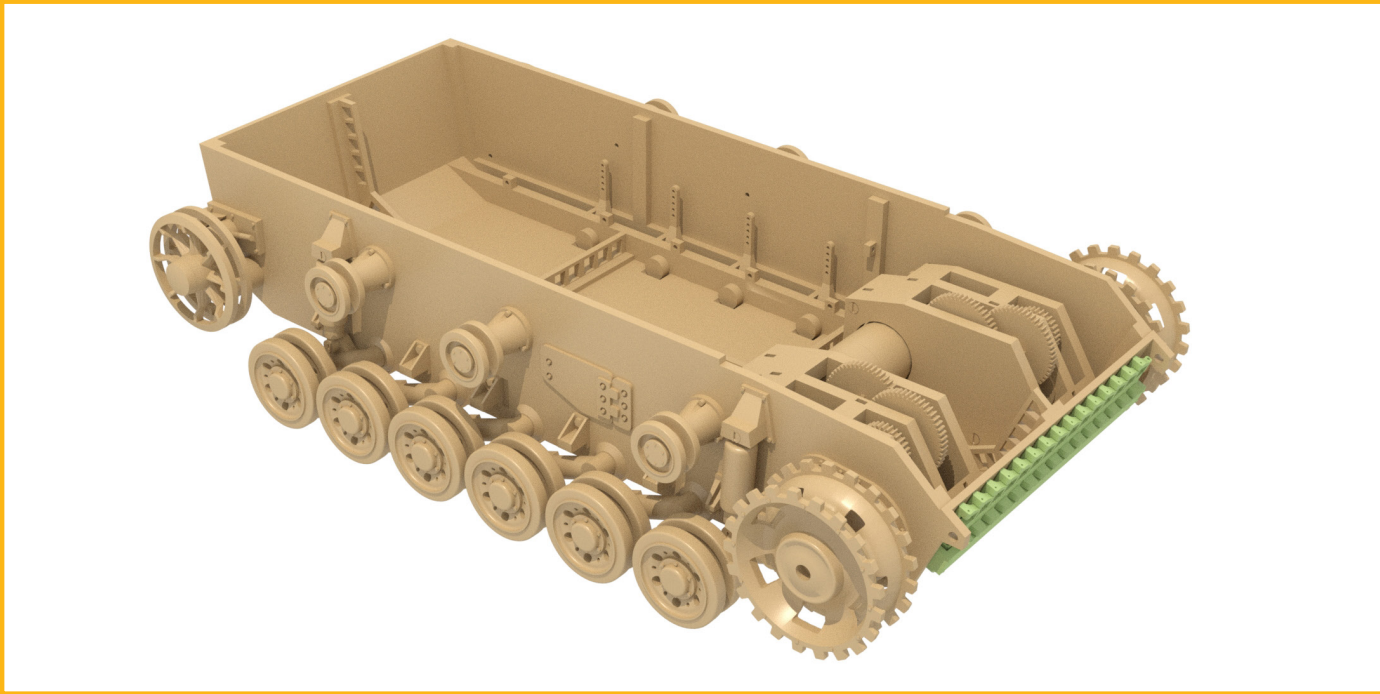
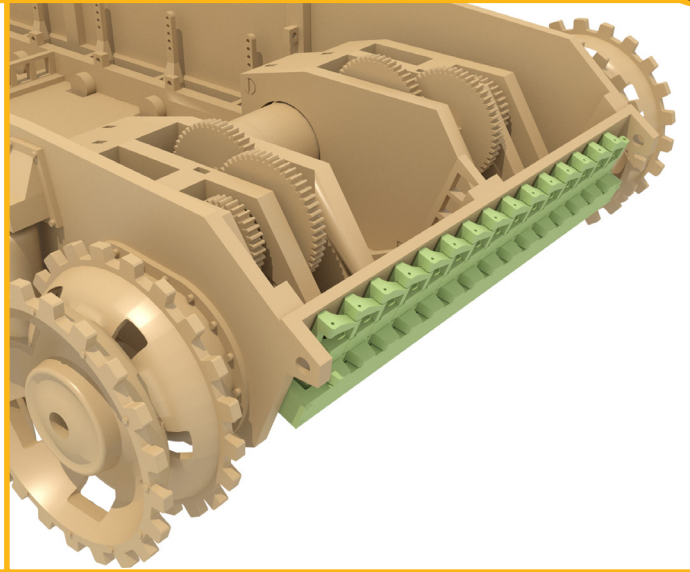
Files:

- A-t1-right,left-2x
- A-t2-right,left-2x
- A-t3-right,left-2x

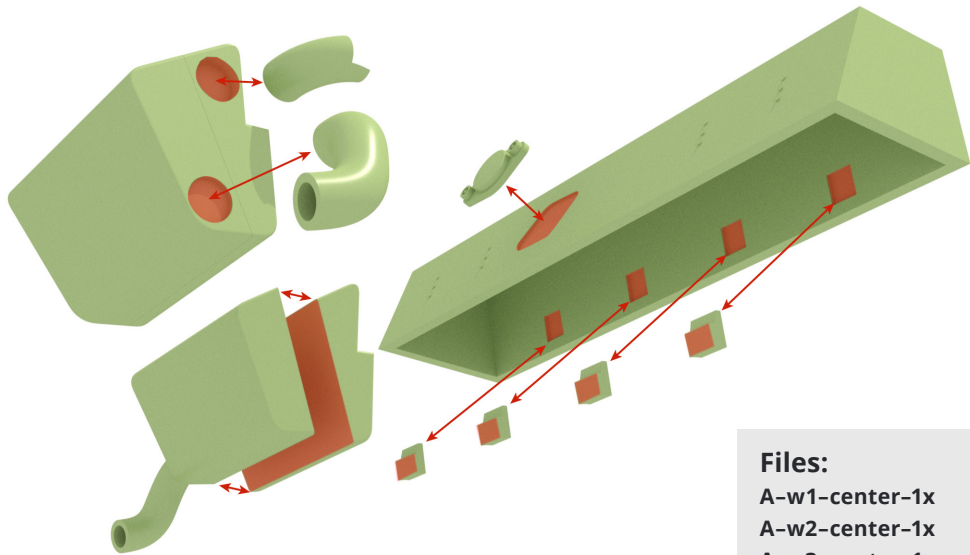




Files:
A-u1-centre-1x
A-pas-1,2-15x

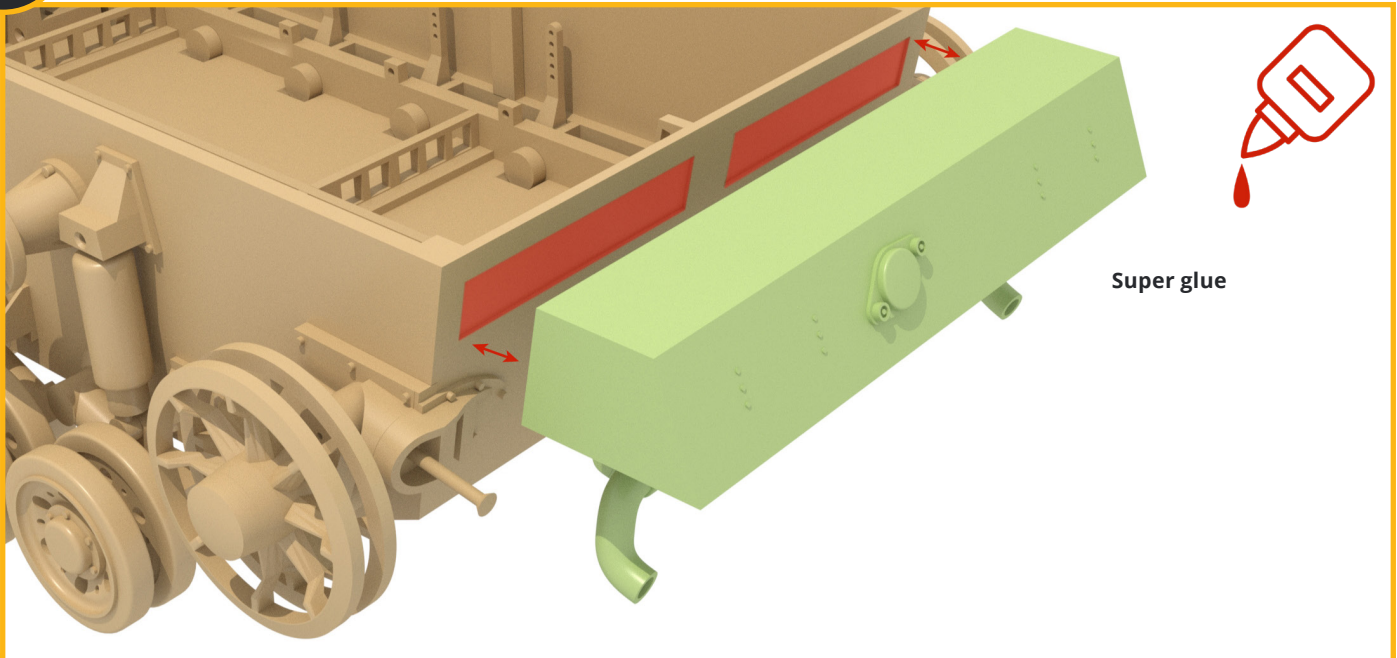


Files:
A-v1-right-1x
A-v2-right-1x
A-v3-right-1x
A-v4-right-1x
A-v1-left-1x
A-v2-left-1x
A-v3-left-1x
A-v4-left-1x

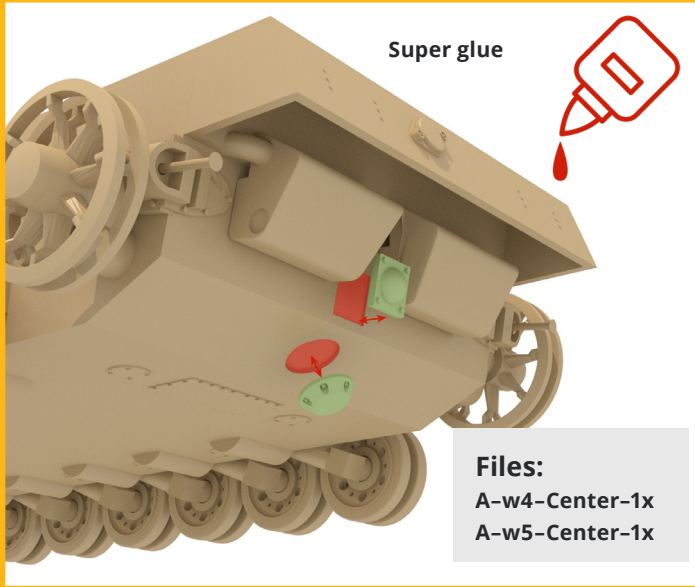


Files:
A-w1-center-1x
A-w2-center-1x
A-w3-center-1x

A

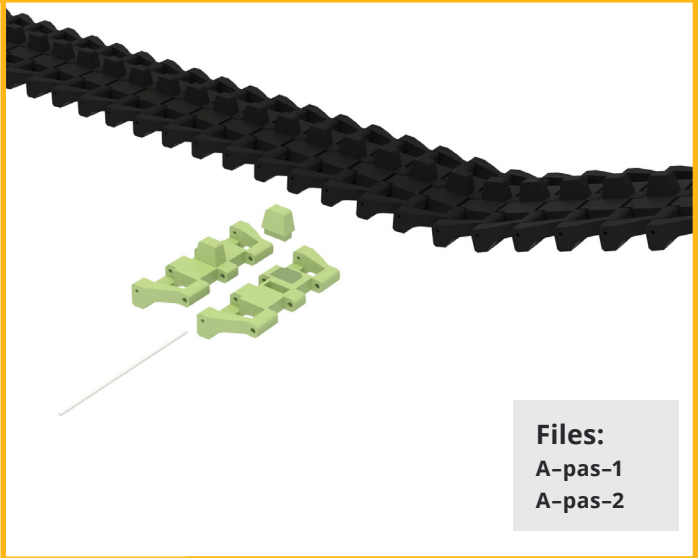


Super glue

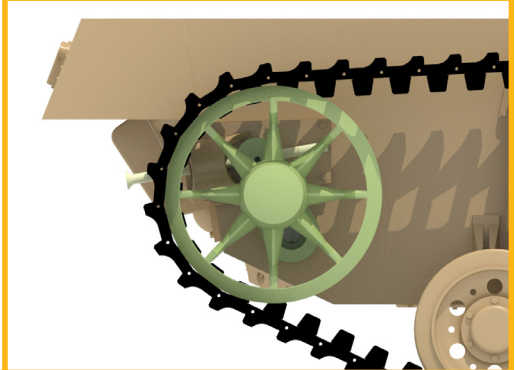
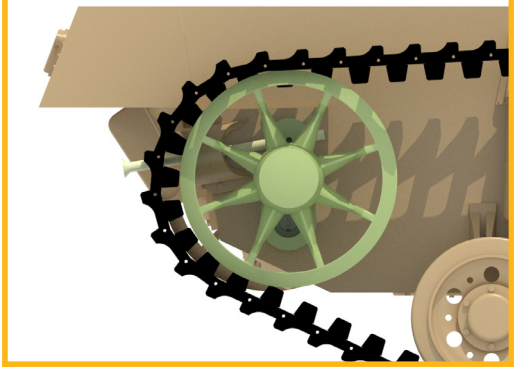


Super glue

Files:
A-w4-Center-1x
A-w5-Center-1x



Files:
A-pas-1
A-pas-2

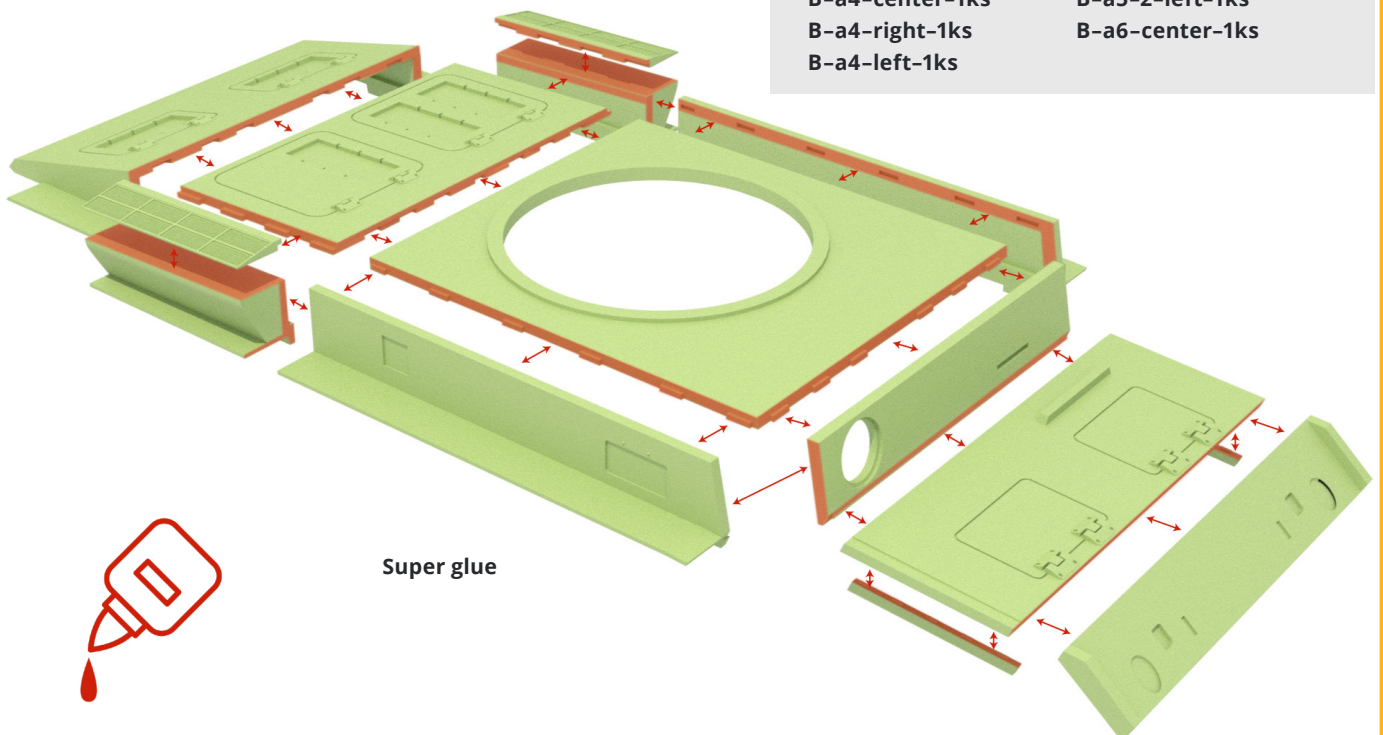


B



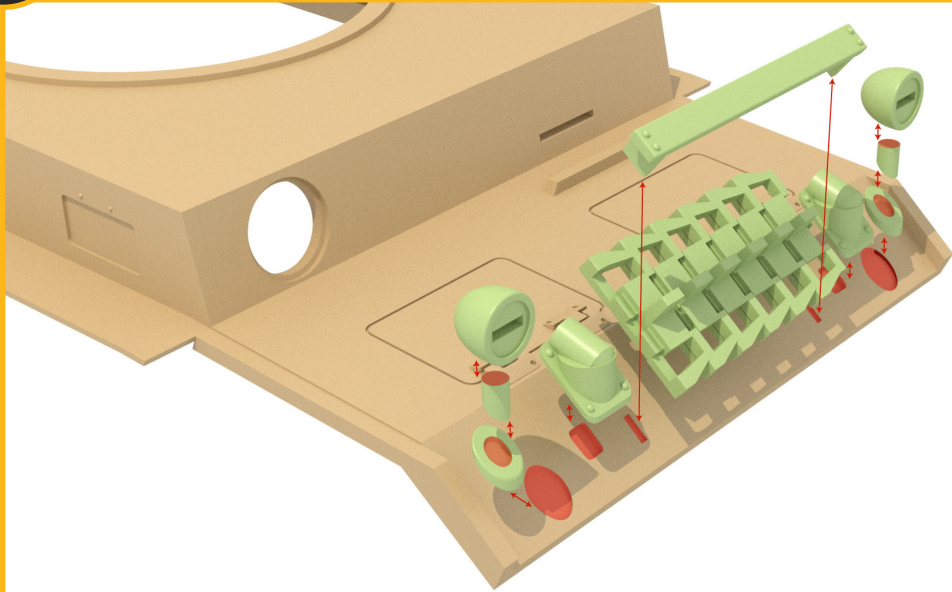
Files:

- | | |
|---------------------|------------------|
| B-a1-center-1ks | B-a5-center-1ks |
| B-a2-center-1ks | B-a5-1-right-1ks |
| B-a2-right,left-2ks | B-a5-2-right-1ks |
| B-a3-center-1ks | B-a5-1-left-1ks |
| B-a4-center-1ks | B-a5-2-left-1ks |
| B-a4-right-1ks | B-a6-center-1ks |
| B-a4-left-1ks | |

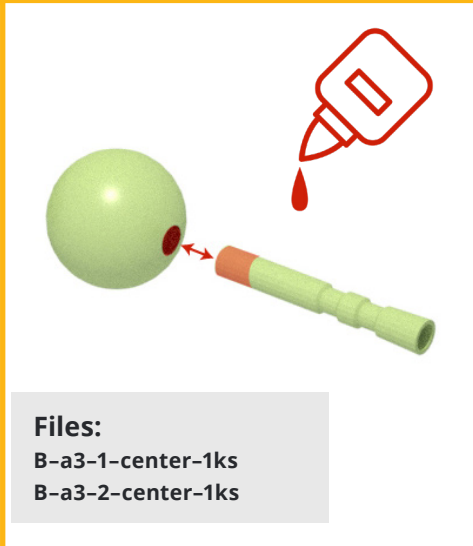


Super glue

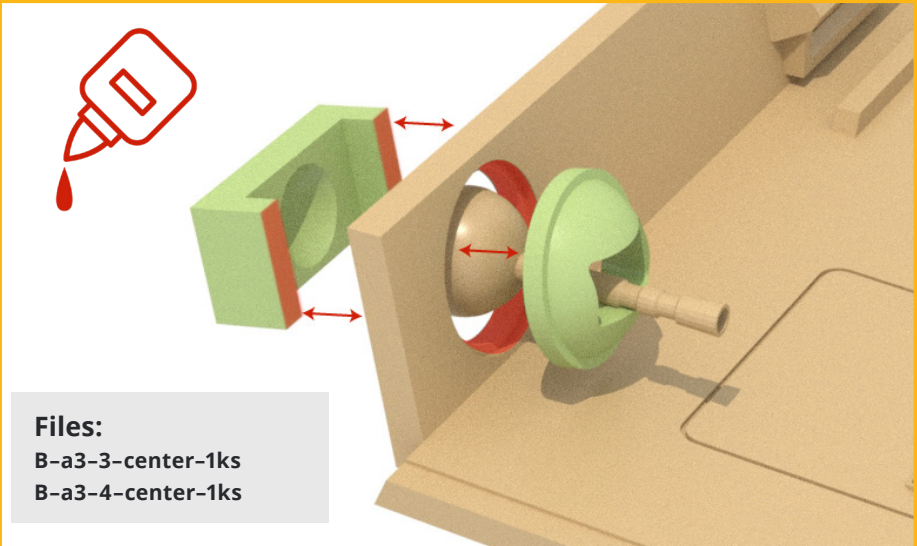
B



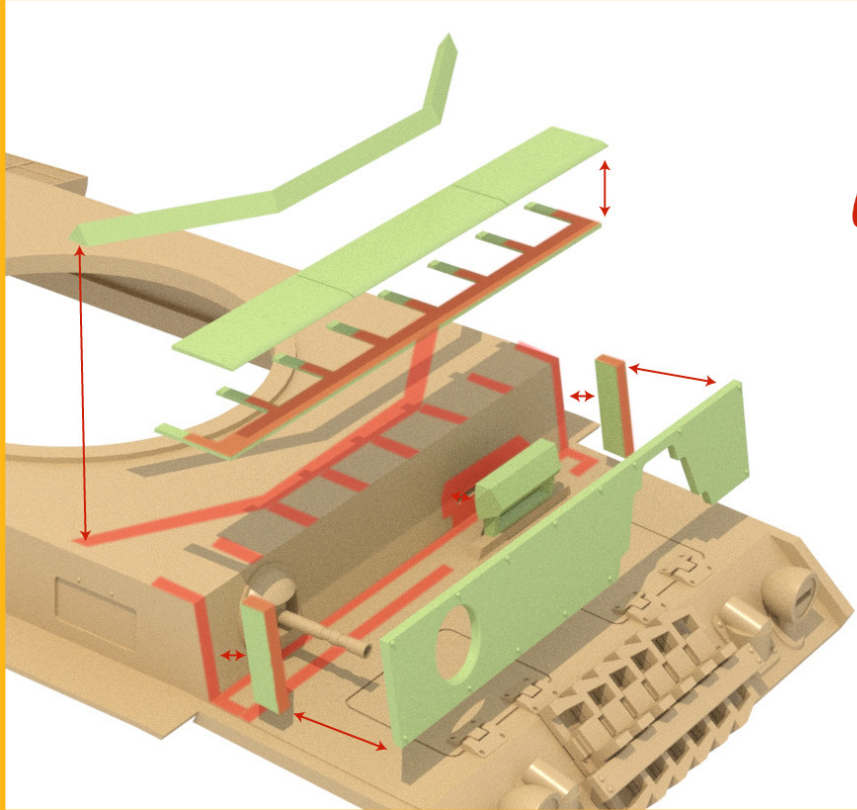
- Files:**
- B-a1-1-center-1ks
 - B-a1-2-center-1ks
 - A-pas-1,2-6ks
 - B-a1-3-right,left-2ks
 - B-a1-4-right,left-2ks
 - B-a1-5-right,left-2ks
 - B-a1-6-right,left-2ks



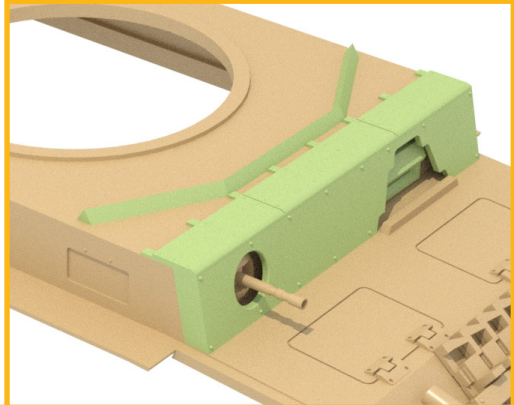
- Files:**
- B-a3-1-center-1ks
 - B-a3-2-center-1ks

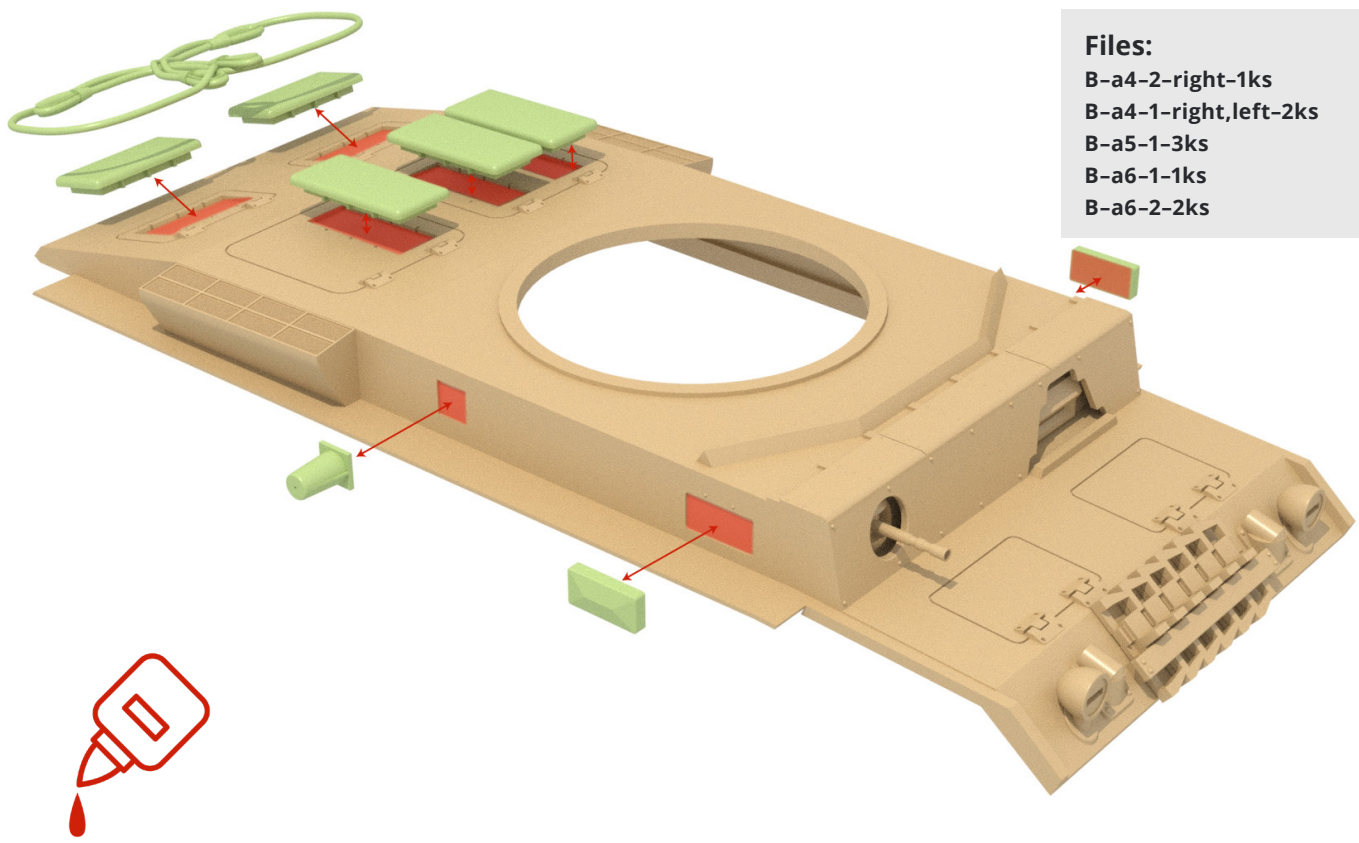


- Files:**
- B-a3-3-center-1ks
 - B-a3-4-center-1ks

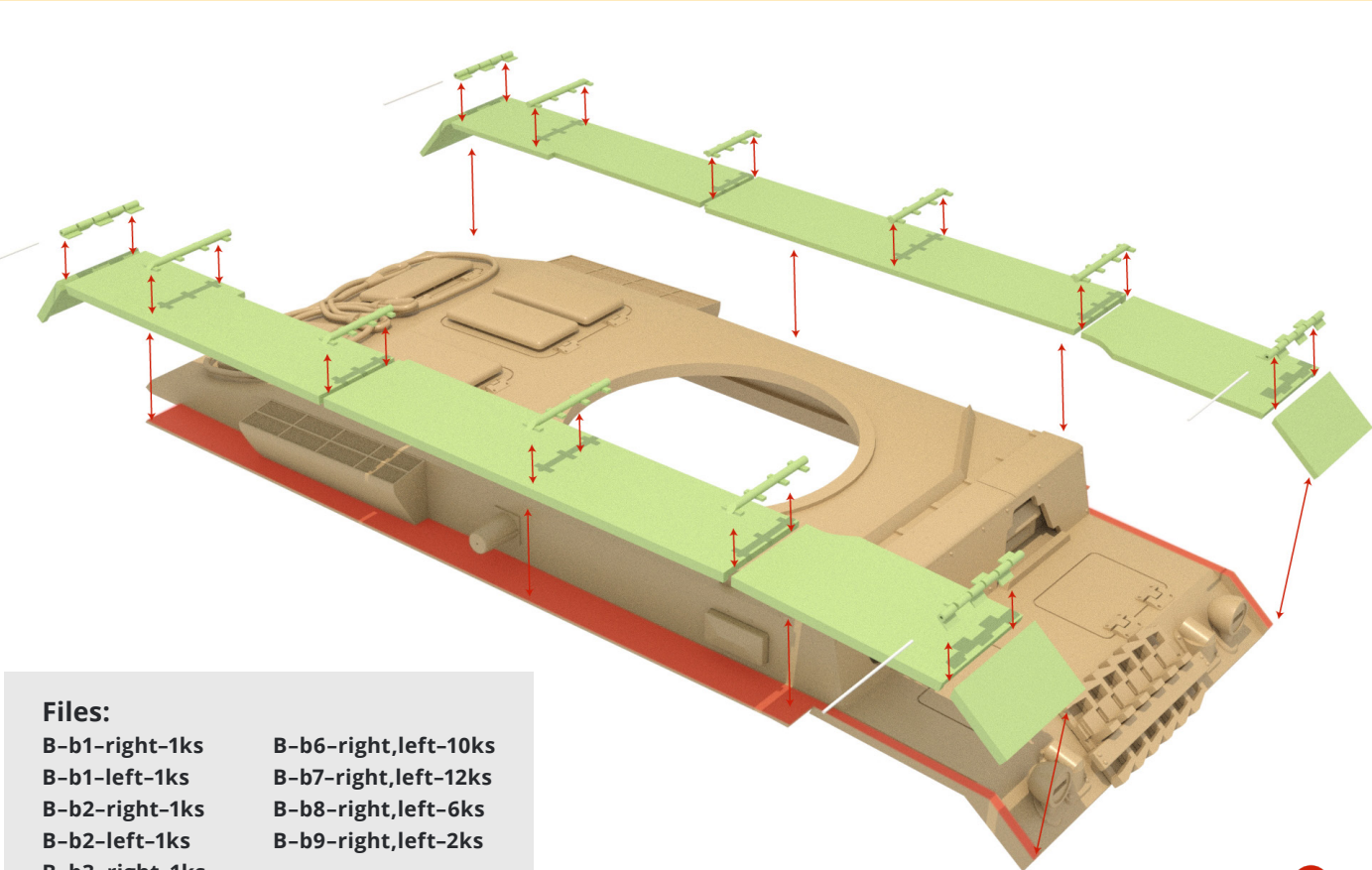


- Files:**
- B-a3-5-center-1ks
 - B-a3-6-center-1ks
 - B-a3-7-center-1ks
 - B-a3-8-center-1ks
 - B-a3-9-center-1ks
 - B-a3-10-right,left-2ks





- Files:**
B-a4-2-right-1ks
B-a4-1-right,left-2ks
B-a5-1-3ks
B-a6-1-1ks
B-a6-2-2ks



- Files:**
- | | |
|----------------|----------------------|
| B-b1-right-1ks | B-b6-right,left-10ks |
| B-b1-left-1ks | B-b7-right,left-12ks |
| B-b2-right-1ks | B-b8-right,left-6ks |
| B-b2-left-1ks | B-b9-right,left-2ks |
| B-b3-right-1ks | |
| B-b3-left-1ks | |
| B-b4-right-1ks | |
| B-b4-left-1ks | |
| B-b5-right-1ks | |
| B-b5-left-1ks | |

B

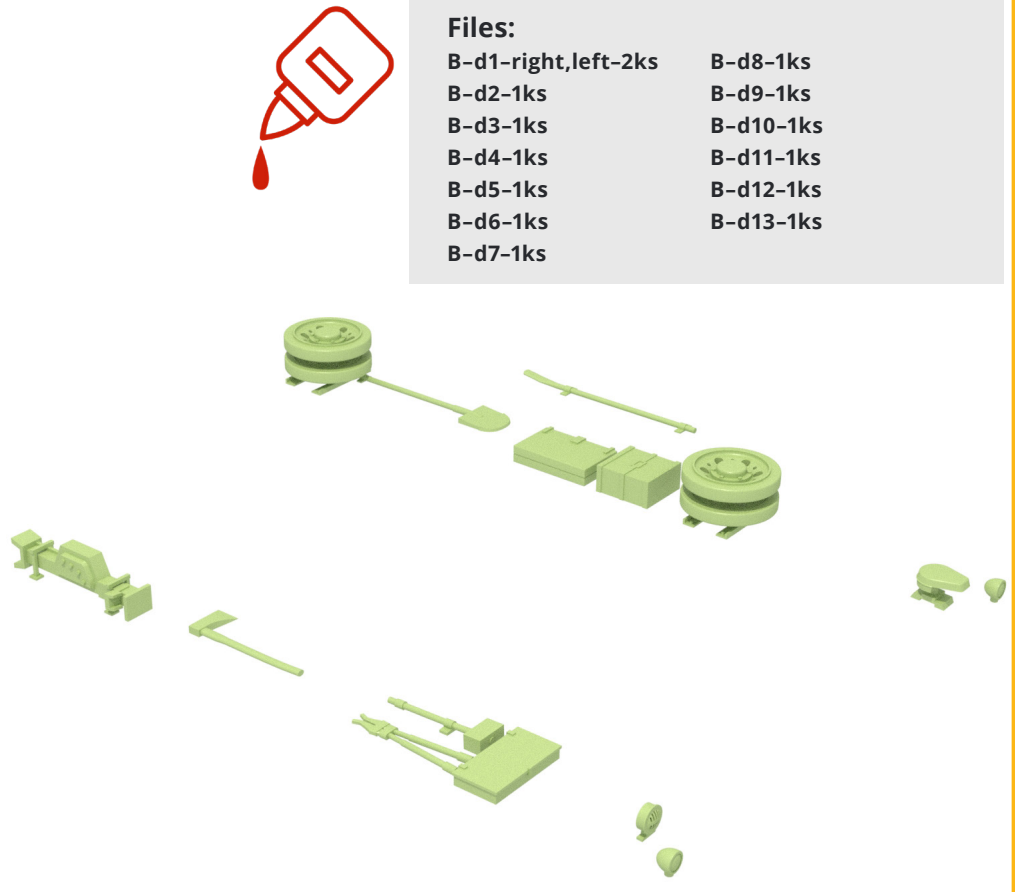
Files:

- B-c1-2ks
- B-c2-2ks
- B-c3-2ks
- B-c4-2ks
- B-c5-2ks
- B-c6-4ks



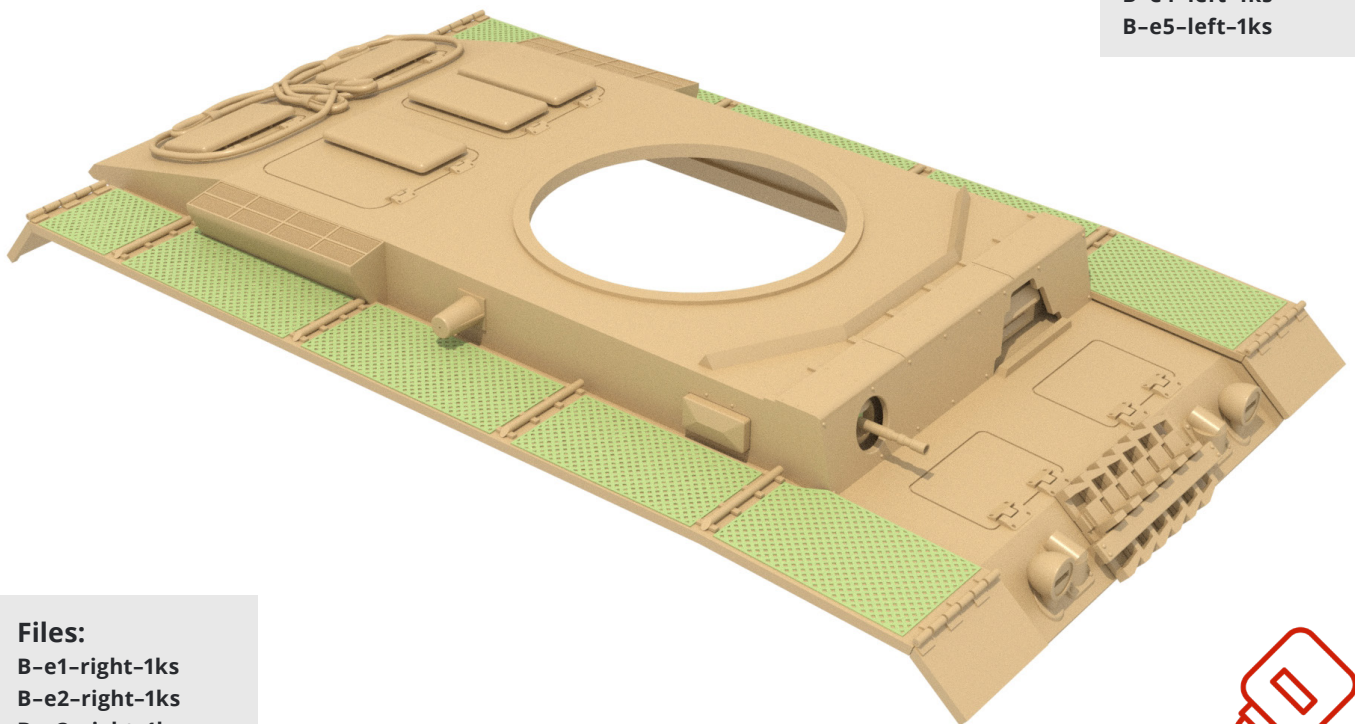
Files:

- B-d1-right, left-2ks
- B-d2-1ks
- B-d3-1ks
- B-d4-1ks
- B-d5-1ks
- B-d6-1ks
- B-d7-1ks
- B-d8-1ks
- B-d9-1ks
- B-d10-1ks
- B-d11-1ks
- B-d12-1ks
- B-d13-1ks



Files:

- B-e1-left-1ks
- B-e2-left-1ks
- B-e3-left-1ks
- B-e4-left-1ks
- B-e5-left-1ks



Files:

- B-e1-right-1ks
- B-e2-right-1ks
- B-e3-right-1ks
- B-e4-right-1ks
- B-e5-right-1ks

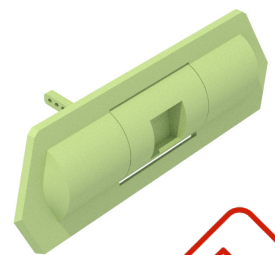
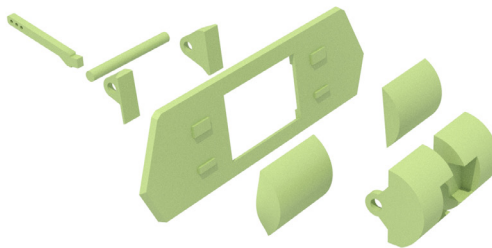
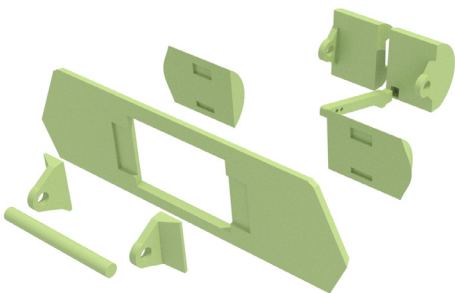




Files:

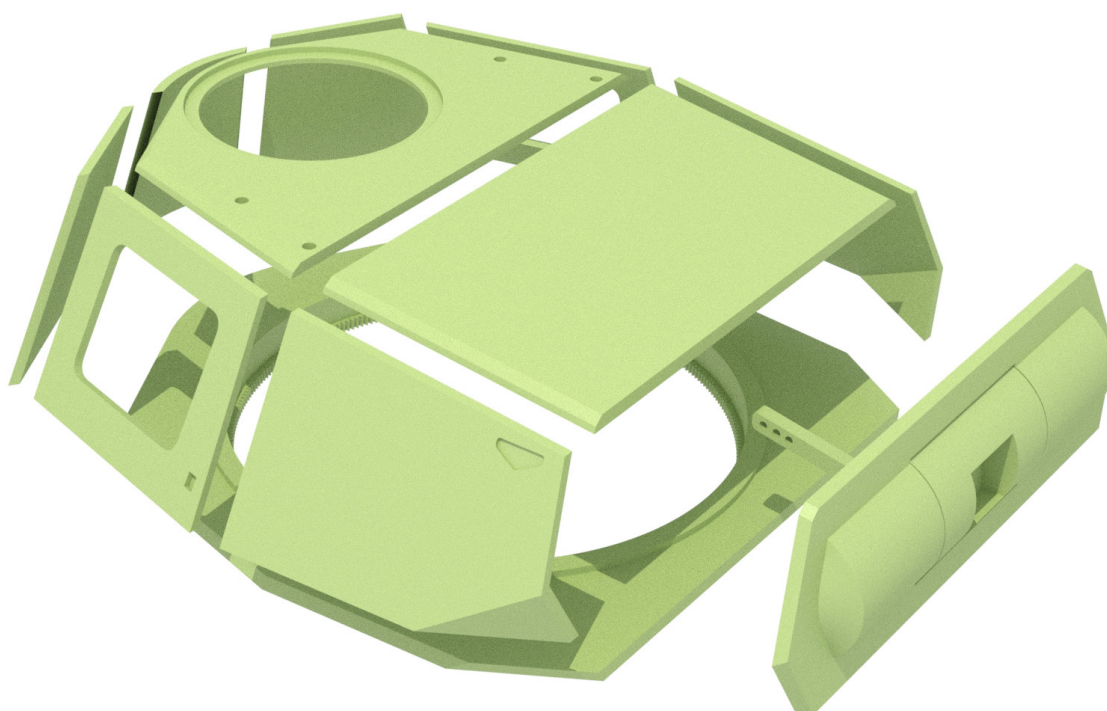
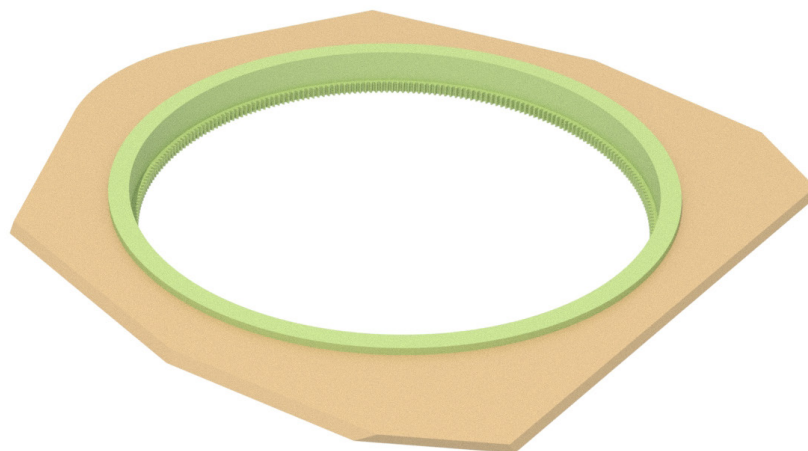
C-a1-right-1ks
C-a1-left-1ks
C-a2-1ks
C-a3-right-1ks
C-a3-left-1ks

C-a4-center-1ks
C-a5-right-1ks
C-a5-left-1ks
C-a6-1ks



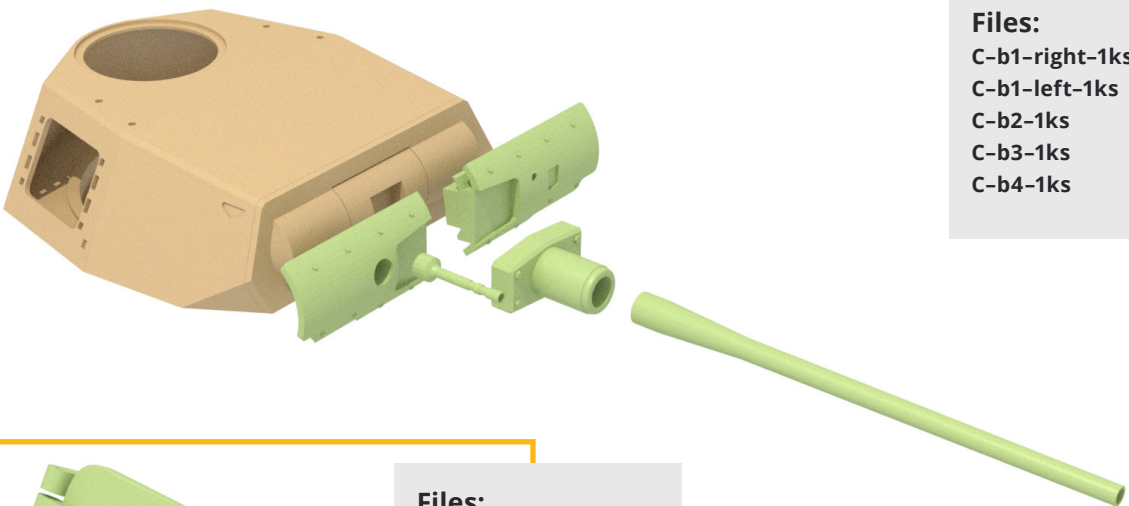
Files:

- C-a4-1-1ks
- C-a4-2-1ks

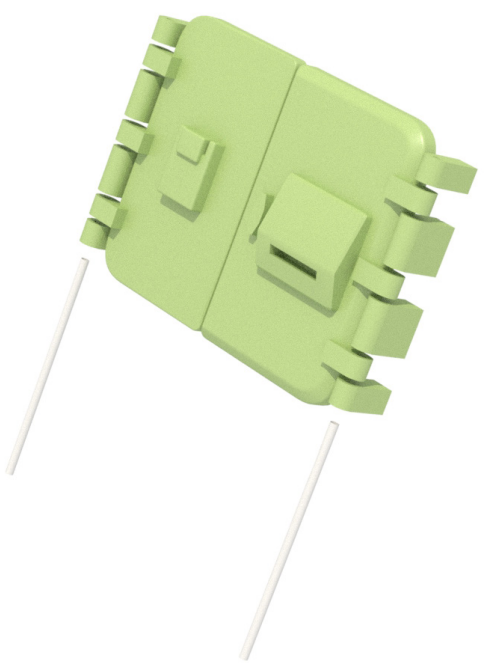


Files:

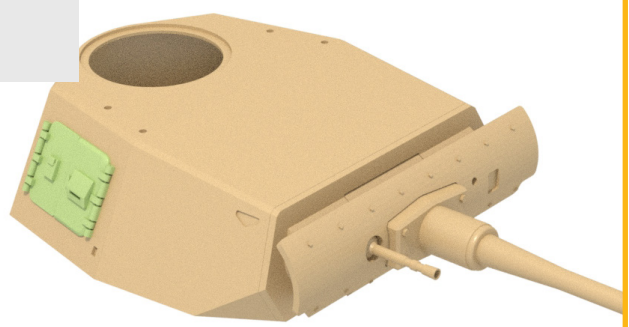
- C-a4-3-1ks
- C-a4-4-1ks
- C-a4-5-1ks
- C-a4-6-1ks
- C-a4-7-1ks
- C-a4-8-1ks
- C-a4-9-1ks
- C-a4-10-1ks
- C-a4-11-1ks



- Files:**
C-b1-right-1ks
C-b1-left-1ks
C-b2-1ks
C-b3-1ks
C-b4-1ks



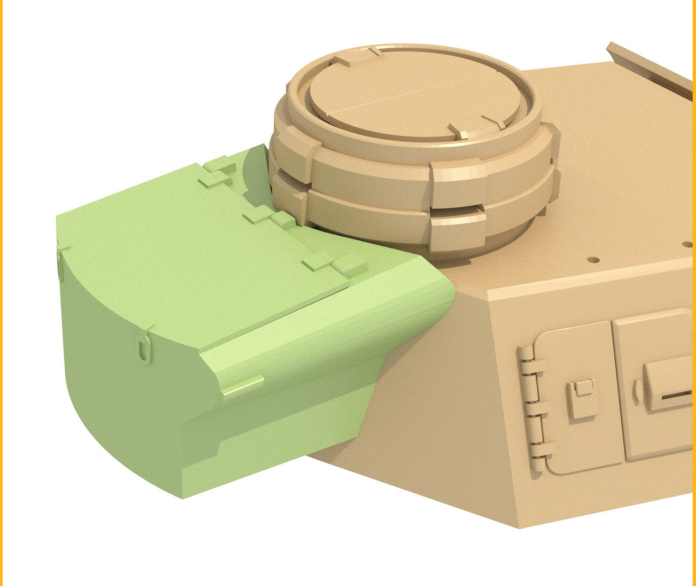
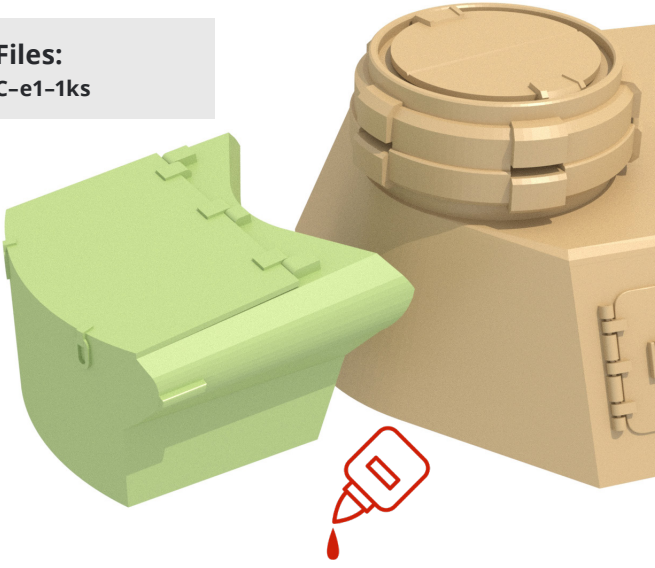
- Files:**
C-c1-right,left-4ks
C-c2-right,left-4ks
C-c3-right-1ks
C-c3-left-1ks
C-c4-right-1ks
C-c4-left-1ks
C-c5-2ks
C-c6-2ks
C-c7-2ks



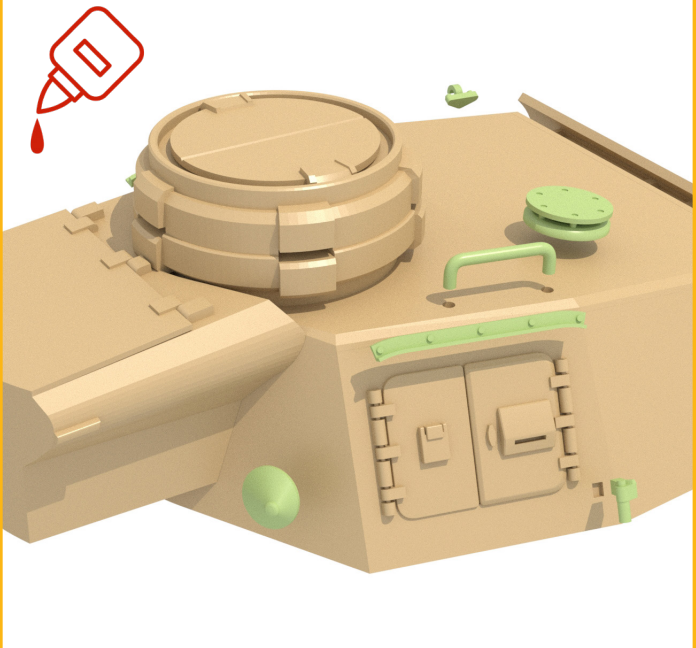
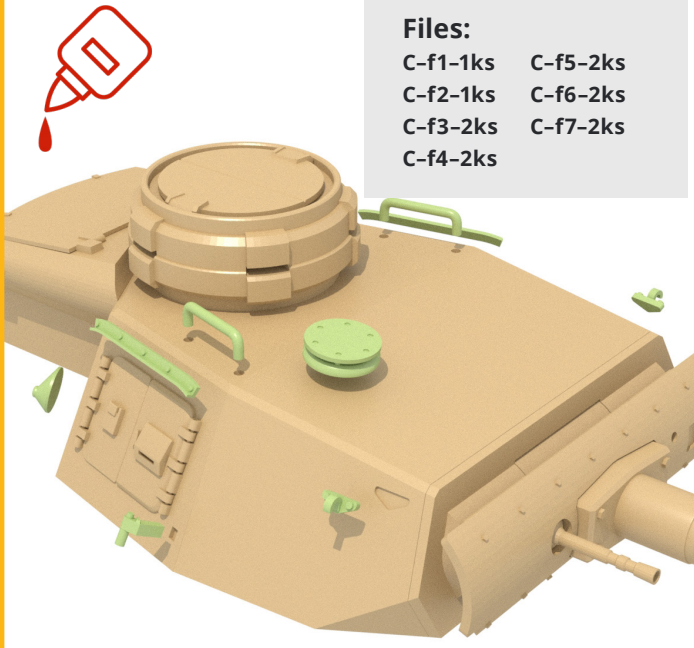
- Files:**
C-d1-right-1ks
C-d1-left-1ks
C-d2-1ks
C-d3-1ks
C-d4-1ks
C-d5-1ks



Files:
C-e1-1ks



Files:
C-f1-1ks C-f5-2ks
C-f2-1ks C-f6-2ks
C-f3-2ks C-f7-2ks
C-f4-2ks



D

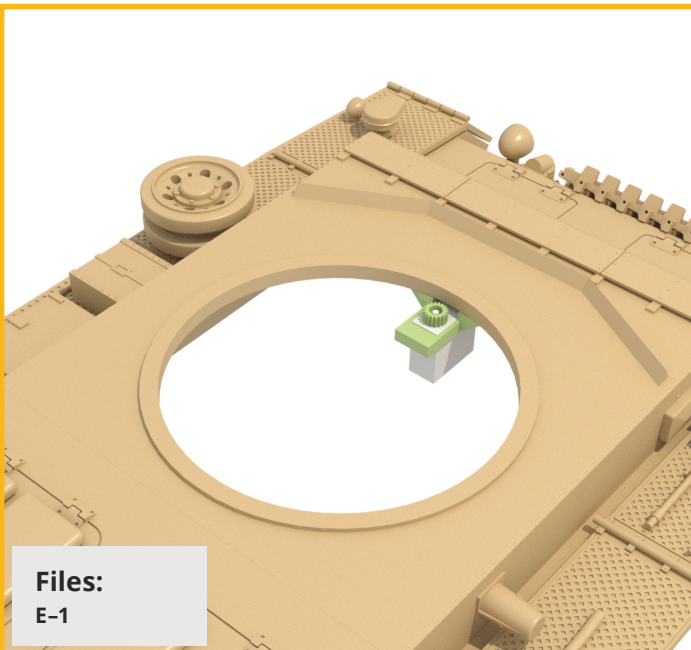


Files:

- D-1
- D-2
- D-3
- D-4
- D-5
- D-6
- D-7
- D-8
- D-9
- D-10
- D-11
- D-12
- D-13

✚ III 1234567890

E



Files:
E-1



Files:
E-2







autor: **Petr Školař**
web: **www.3dtiks.store**
e-mail: **3dtisk@gpstudio.cz**