

VERZE 1.0.

2022



Pz Kpfw VI Tiger I Ausf. E. 1:10



BUILD GUIDE

www.3dtisk.store

Build Guide

3d print

PRINTED ON THE ORIGINAL PRUSA I3 MK3S + 3D PRINTER

Print settings in PrusaSlicer-2.4.1

Print setting: **0.20mm** (for connecting parts **0.15mm** more accurate eg insertion of ball bearings)

Filling: 15% (for moving parts 80% eg gearbox)

Filament: **Prusa PLA**

Files STL: **270 ks**



Printing with a minimum number of struts, intuitive easy construction.

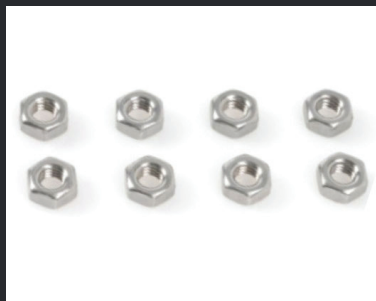
Fasteners, electro

FASTENERS

Šrouby

M3 x 16mm

M3 matka



Bearings:

Ball-bearing 10x15x4mm 54ks

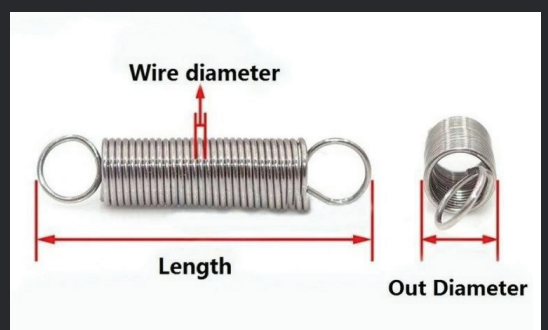


Springs:

0,5 mm, 30 mm, 5 mm 16ks

Binding wire: Ø 1 mm, délka 1m

Binding wire: Ø 2 mm, délka 17,5m



Super glue



ELECTRICAL COMPONENTS

Engines:

DC motors 540

Operating voltage 5-12V

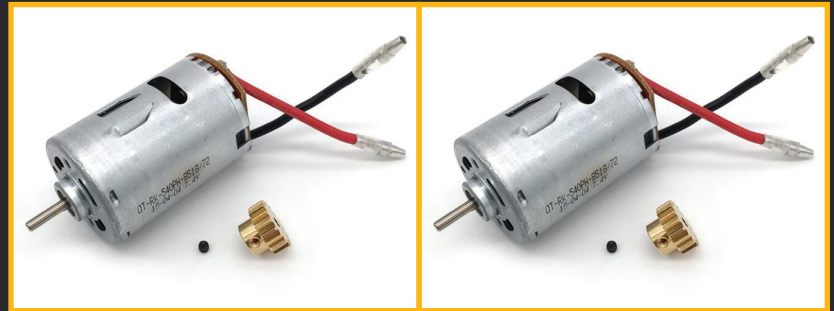
Shaft length 9 mm

Dimensions (Ø x d) 35.8 mm x 50 mm

Rated voltage 7,2 V/DC

Shaft diameter 3,17 mm

Pinion 17T



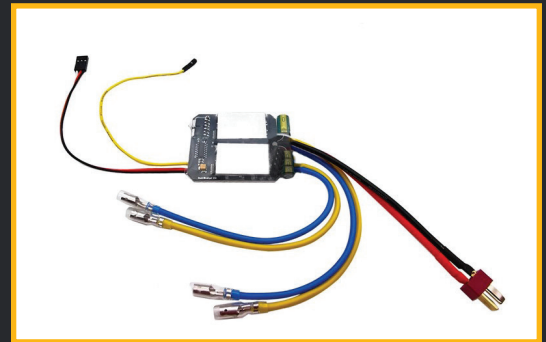
Regulators:

Bidirectional electric speed controller 40A 2x, for DC motors.

Here is the solution in one: https://www.aliexpress.com/item/1005003605105604.html?spm=a2g0o.order_list.0.0.36281802RPbP2Y

https://www.aliexpress.com/item/1005001415643140.html?spm=a2g0o.order_list.0.0.36281802RPbP2Y

<https://www.youtube.com/watch?v=4Z-j6bUJTQ8>



Serve:

This servo was used:

https://www.aliexpress.com/item/1005001415643140.html?spm=a2g0o.order_list.0.0.36281802RPbP2Y

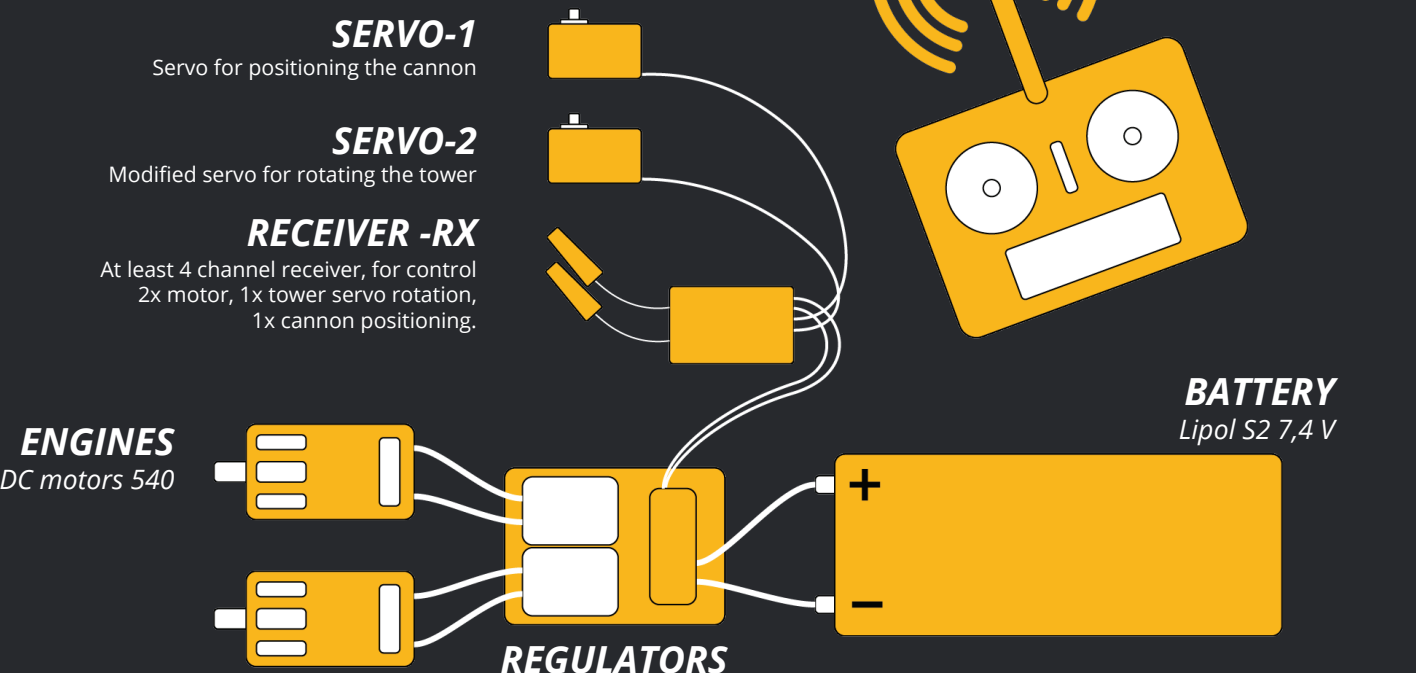
https://www.aliexpress.com/item/1005001415643140.html?spm=a2g0o.order_list.0.0.36281802RPbP2Y

The tower servo must be adjusted according to these instructions, for example:

<https://www.youtube.com/watch?v=4Z-j6bUJTQ8>



DIAGRAM



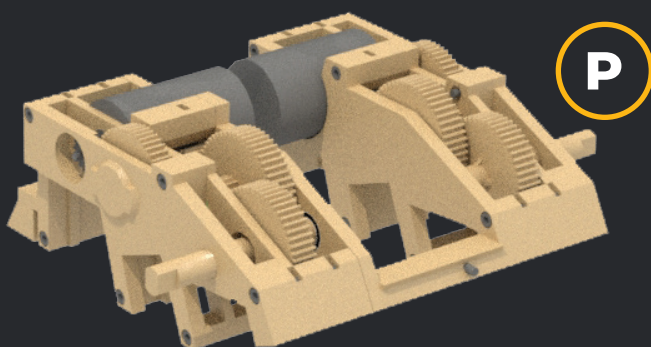
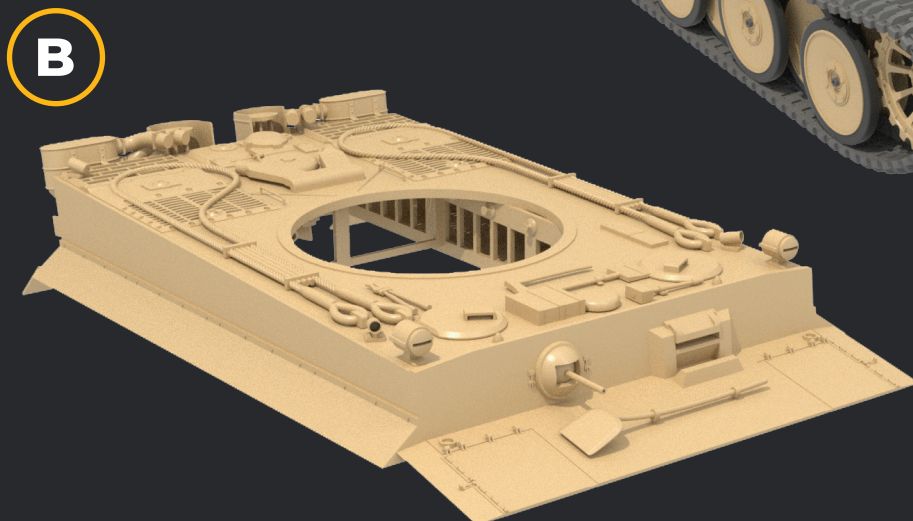
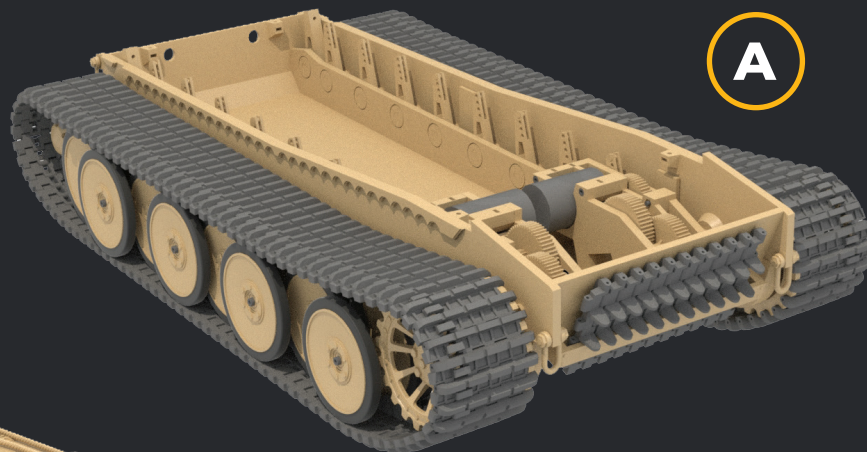
Tiger I

MODEL PARAMETERS

Scale: 1:10

Dimension: 850 x 380 x 310 mm

Weight: 7,5 Kg



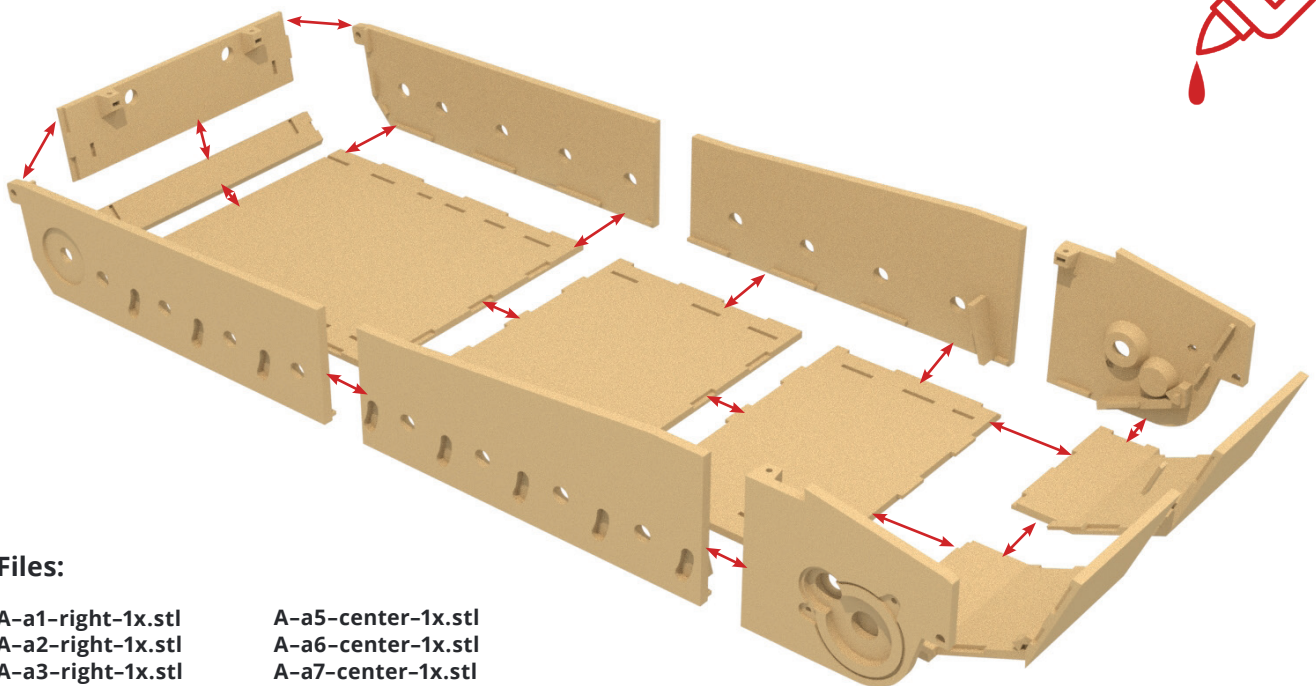
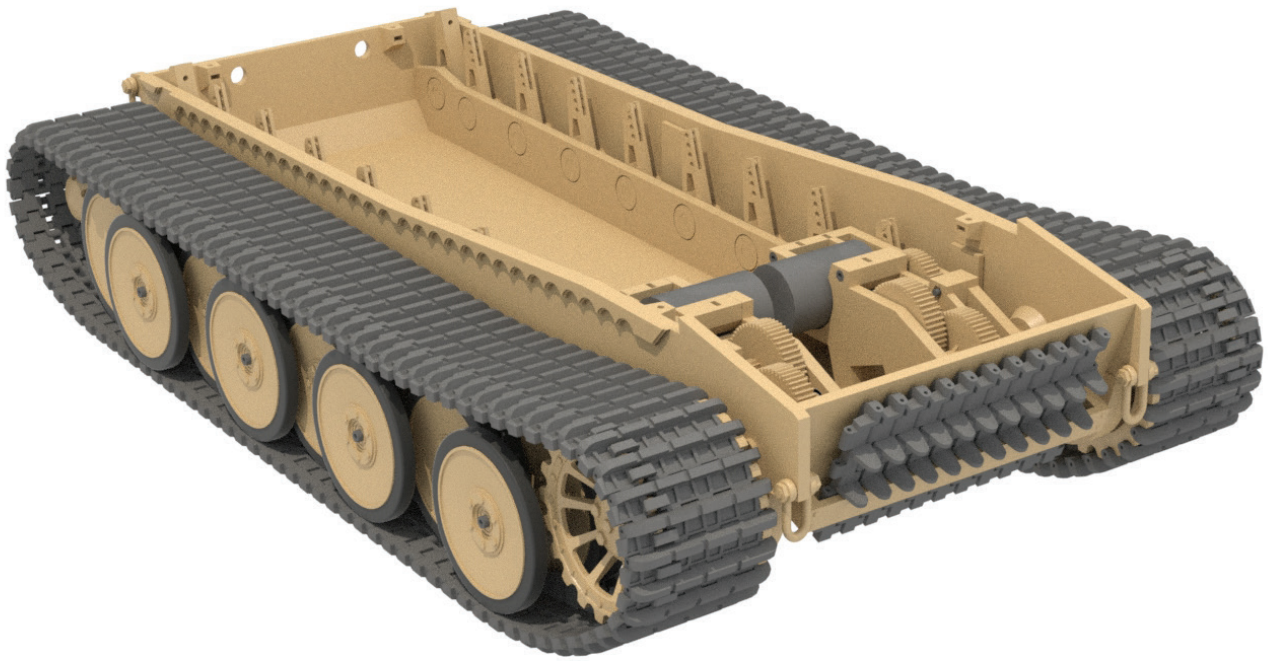
autor: Petr Školař

web: www.3dtiks.store

e-mail: 3dtisk@gpstudio.cz

Tiger I

A



Files:

A-a1-right-1x.stl
A-a2-right-1x.stl
A-a3-right-1x.stl
A-a4-right-1x.stl
A-a1-left-1x.stl
A-a2-left-1x.stl
A-a3-left-1x.stl
A-a4-left-1x.stl

A-a5-center-1x.stl
A-a6-center-1x.stl
A-a7-center-1x.stl
A-a8-center-1x.stl
A-a9-center-1x.stl
A-a10-center-1x.stl
A-a11-center-1x.stl

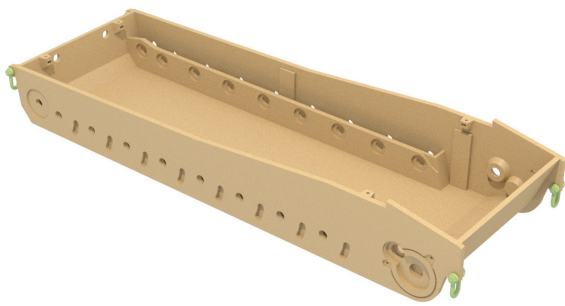
A

Super glue



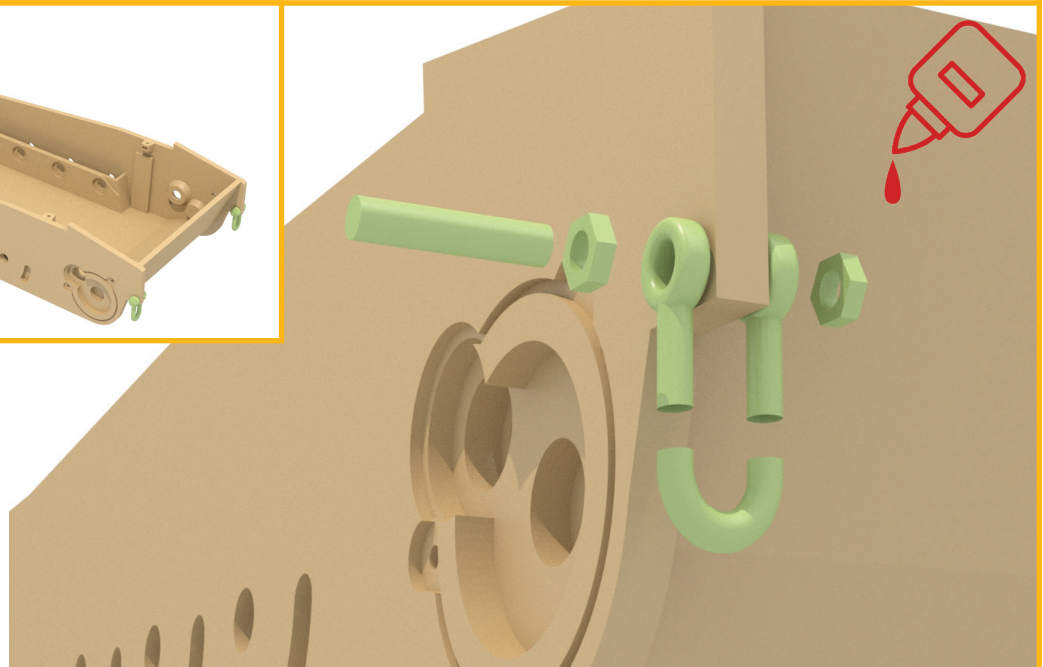
Files:

- A-b1-left-1x
- A-b1-right-1x
- A-b2-left-1x
- A-b2-right-1x
- A-b3-right,left-2x
- A-b4-right,left-2x



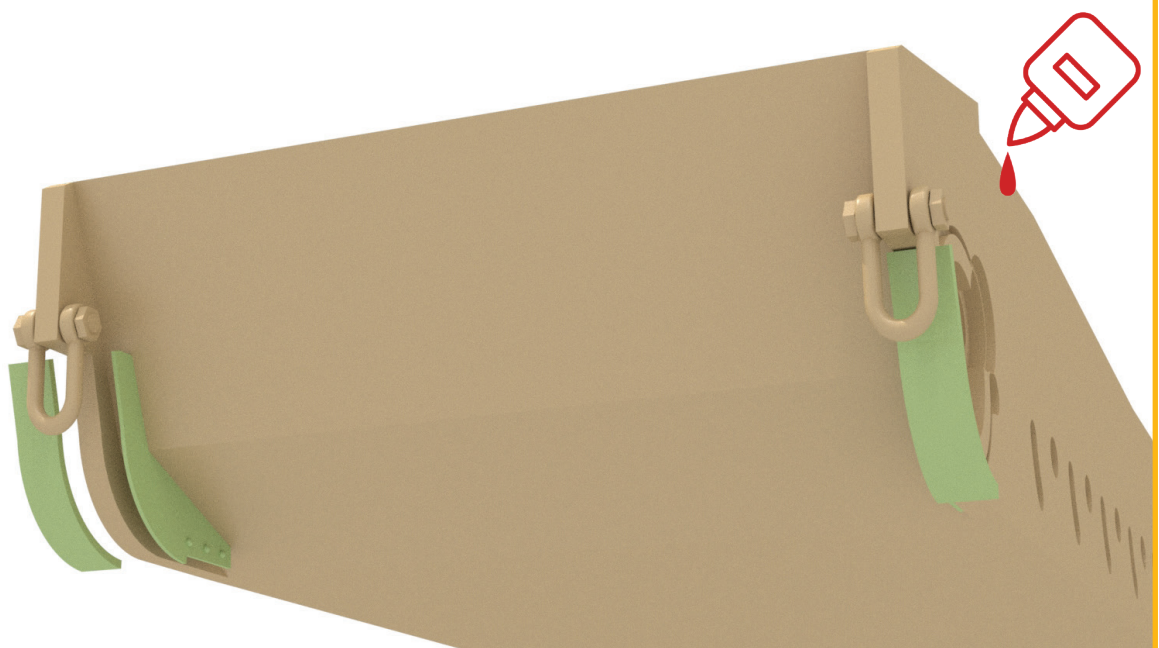
Files:

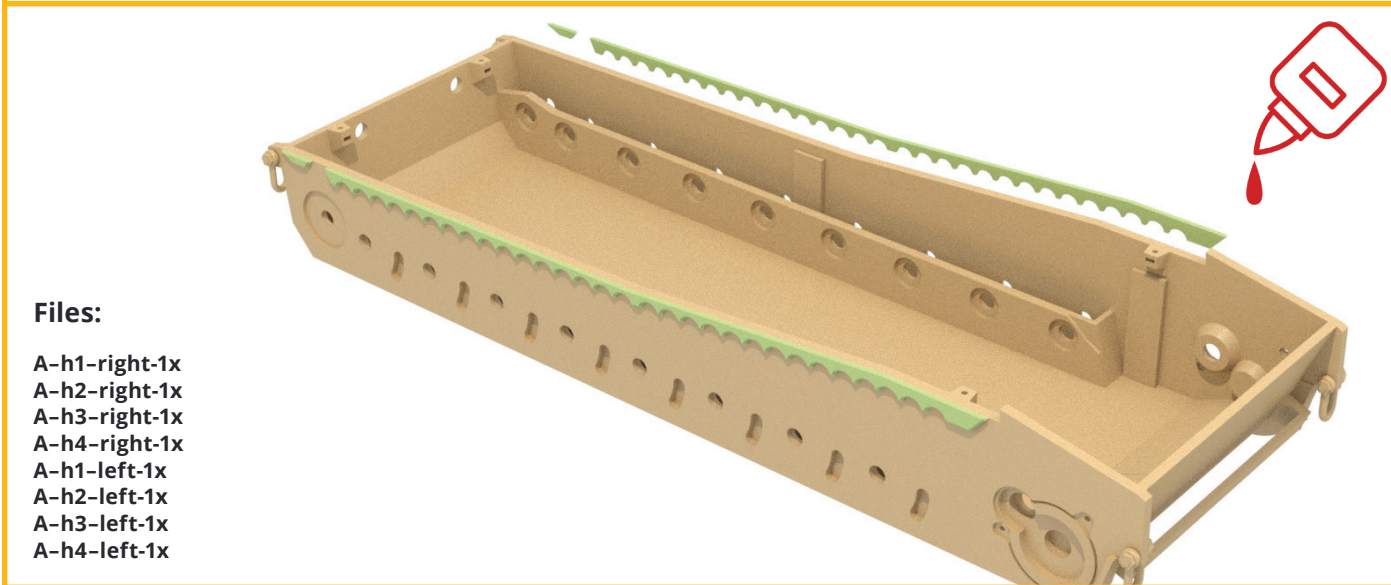
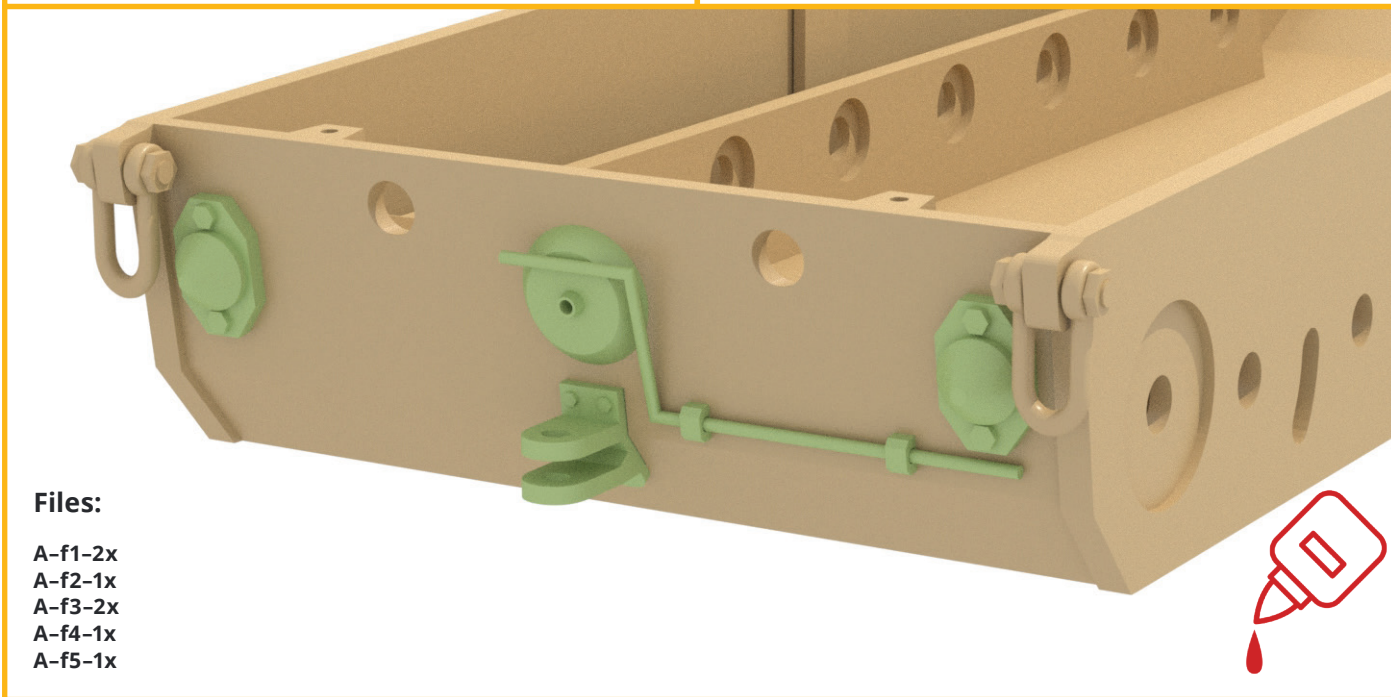
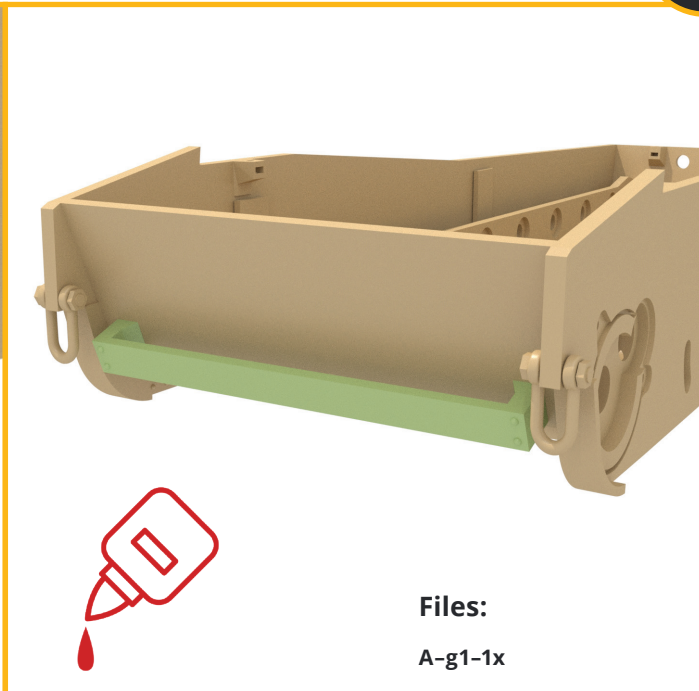
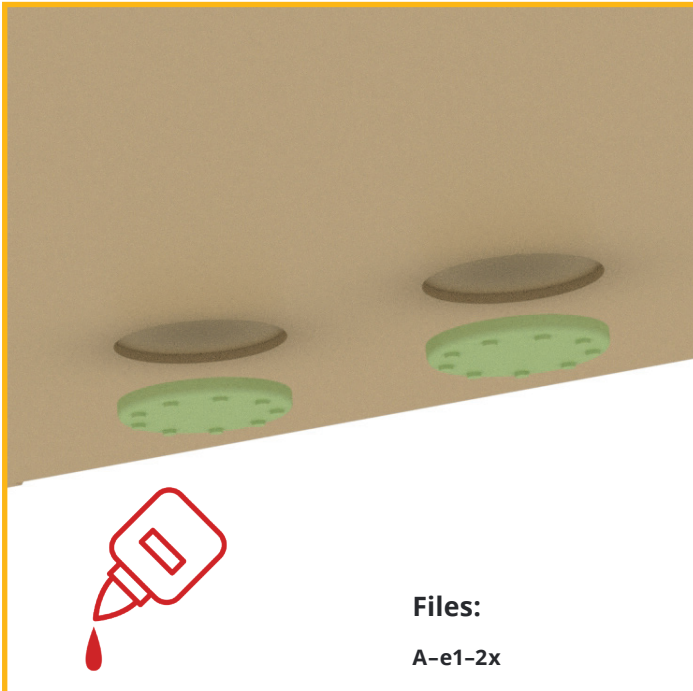
- A-c1-8x
- A-c2-4x
- A-c3-8x
- A-c4-4x



Files:

- A-d1-right-1x
- A-d2-right-1x
- A-d1-left-1x
- A-d2-left-1x





A



Files:

A-c14-right,left-8x
A-c15-right,left-8x
Ložisko10x15x4mm
A-c1-right,left-FLEX-48x



Files:

A-c16-right,left-8x
A-c17-right,left-8x
Ložisko10x15x4mm
A-c1-right,left-FLEX-48x



Files:

A-c3-right,left-8x
A-c4-right,left-8x
Ložisko10x15x4mm
A-c1-right,left-FLEX-48x



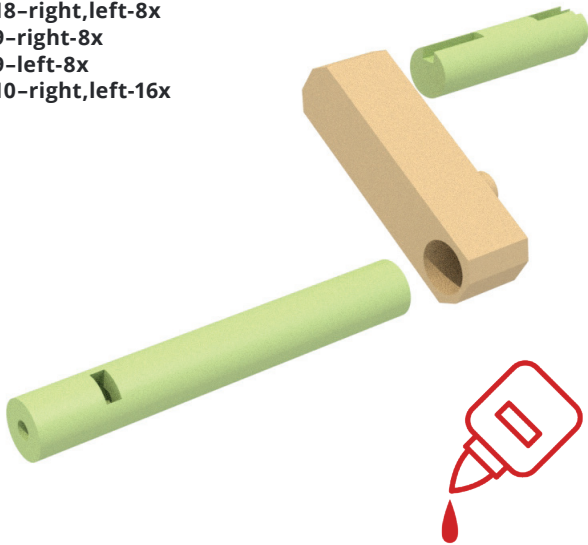
Files:

A-c5-right,left-8x
A-c6-right,left-8x
Ložisko10x15x4mm
A-c1-right,left-FLEX-48x



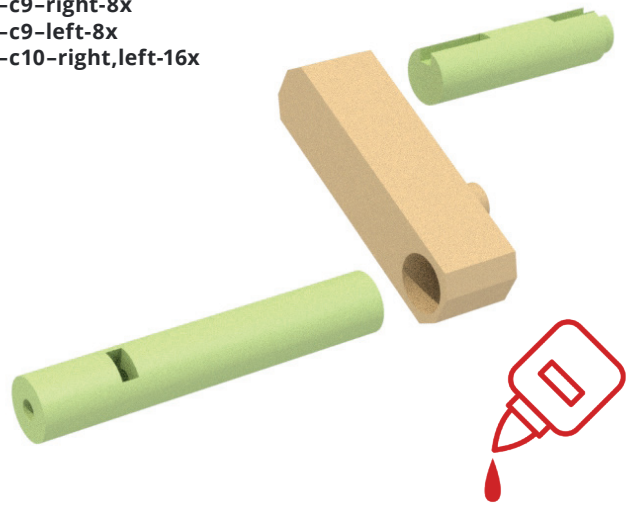
Files:

- A-c18-right,left-8x
- A-c9-right-8x
- A-c9-left-8x
- A-c10-right,left-16x



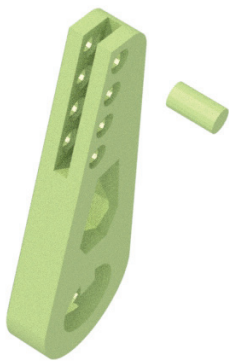
Files:

- A-c8-right,left-16x
- A-c9-right-8x
- A-c9-left-8x
- A-c10-right,left-16x



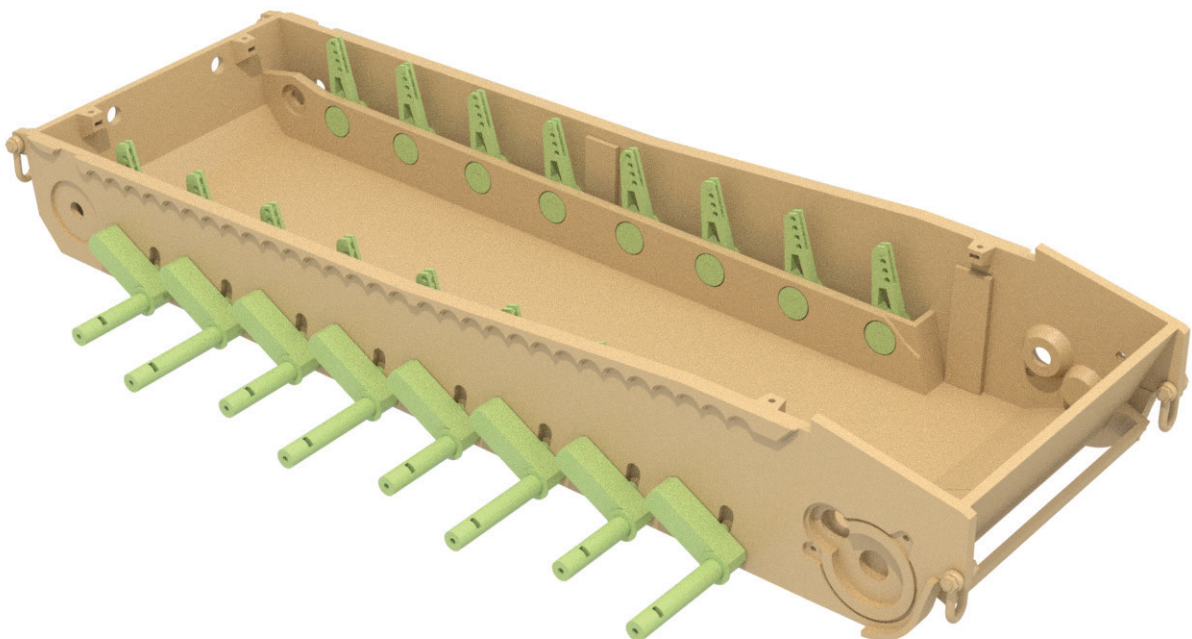
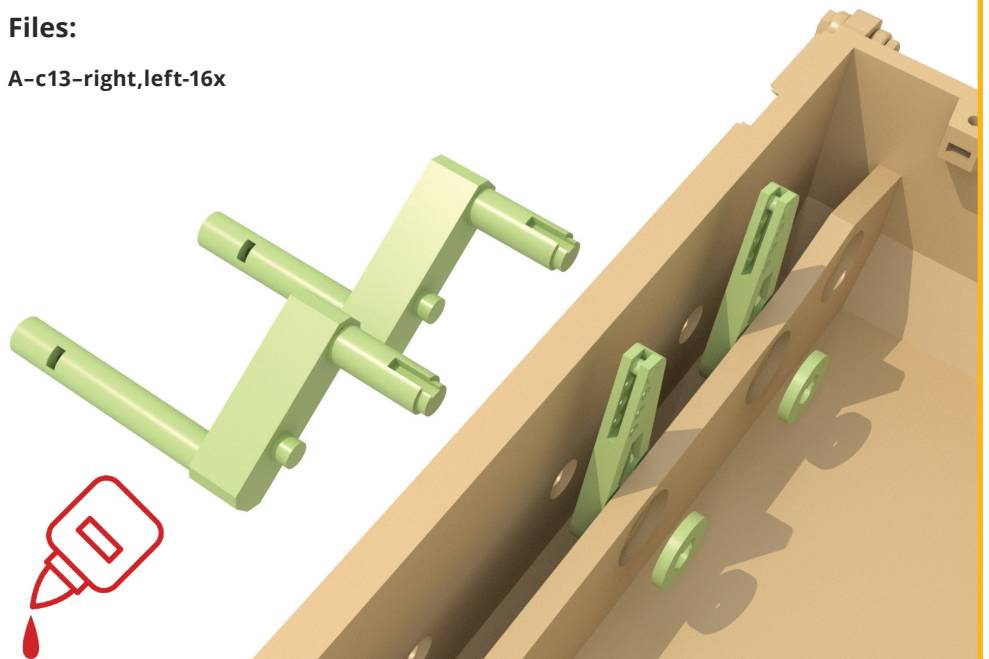
Files:

- A-c13-right,left-16x

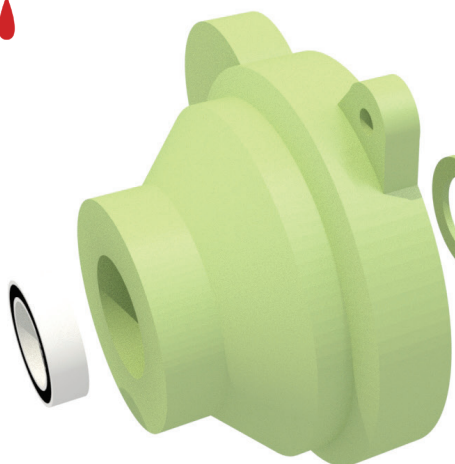


Files:

- A-c11-right,left-16x
- A-c12-right,left-16x



A

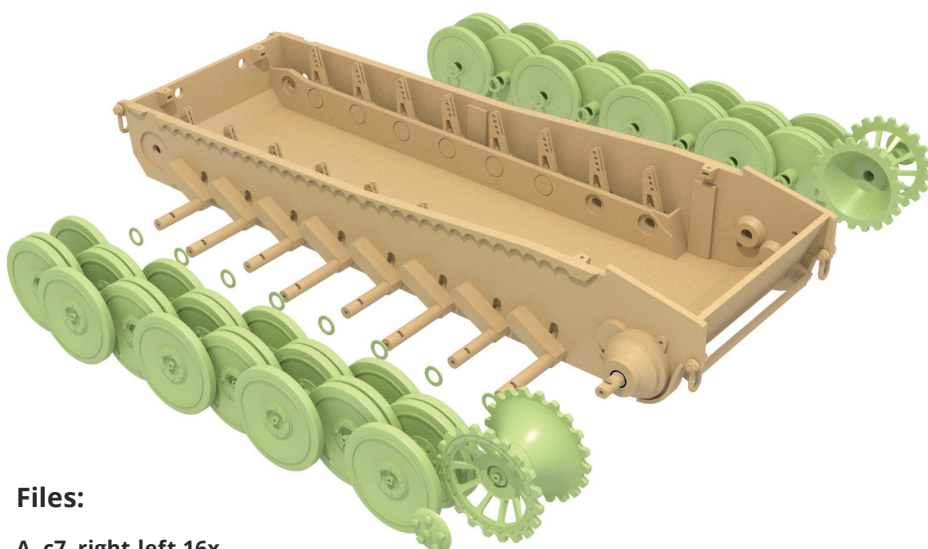
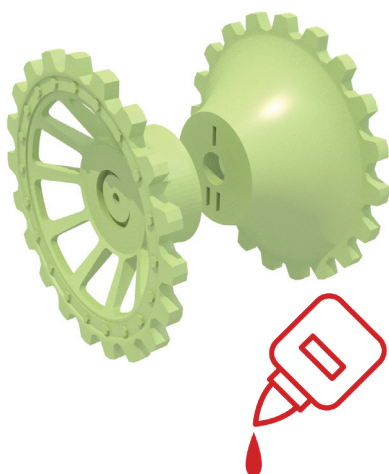


Files:

- Ložisko10x15x4mm-6x
- A-d4-righ-1x
- A-d4-left-1x
- A-d5-righ, left-2x
- A-d6-righ, left-2x
- A-d7-righ, left-2x
- A-d8-righ, left-2x

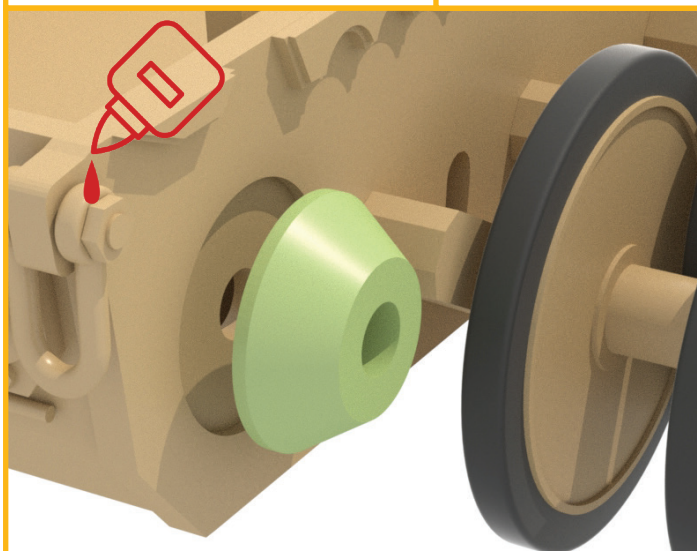
Files:

- A-d2-righ, left-2x
- A-d3-righ, left-2x



Files:

- A-c7-right,left-16x
- A-c2-right,left-16x



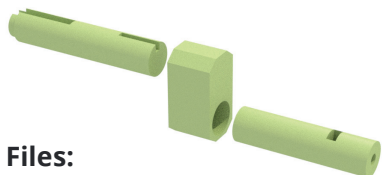
Files:

- A-e8-right, left-2x



Files:

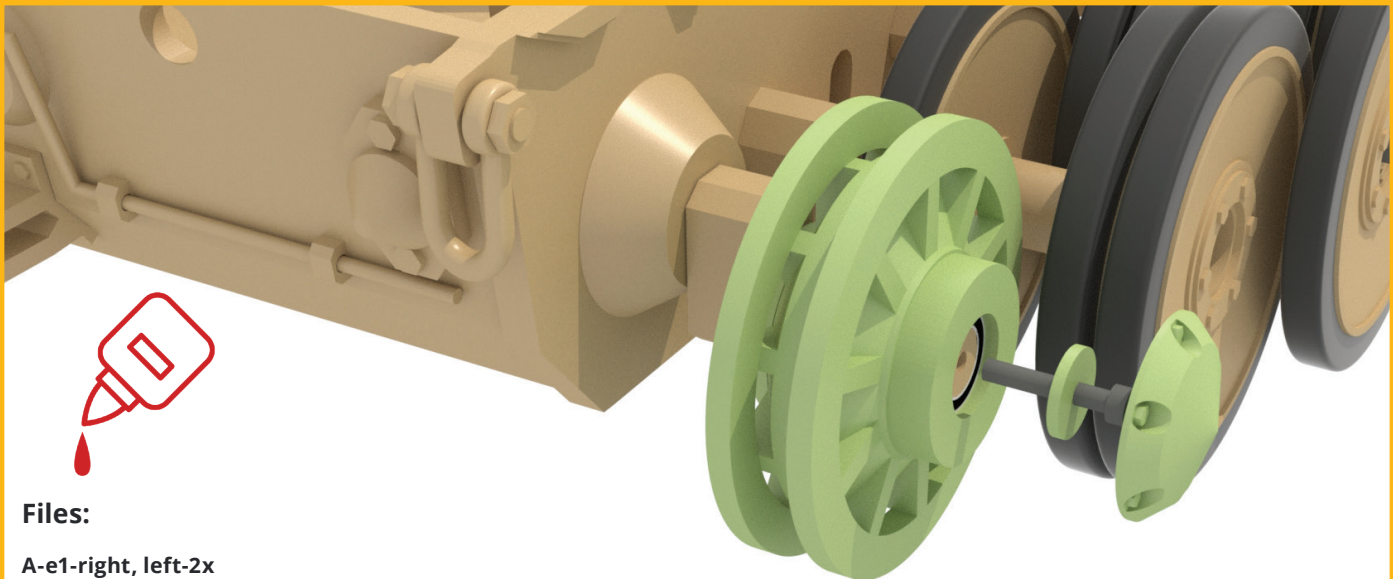
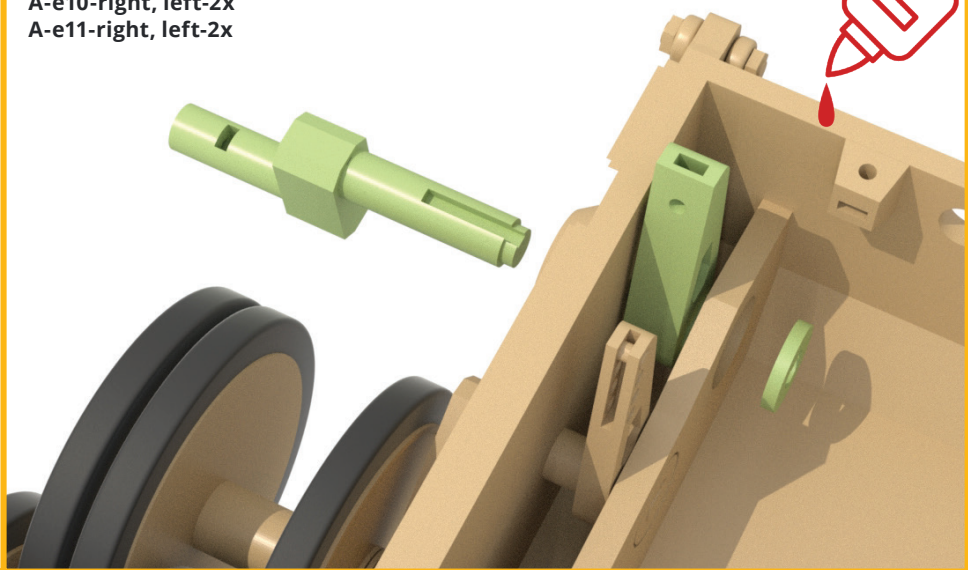
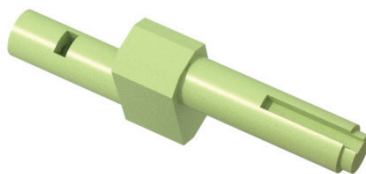
- Ložisko10x15x4mm-4x
- A-e2-right, left-2x
- A-e3-right, left-2x
- A-e6-right, left-2x

**Files:**

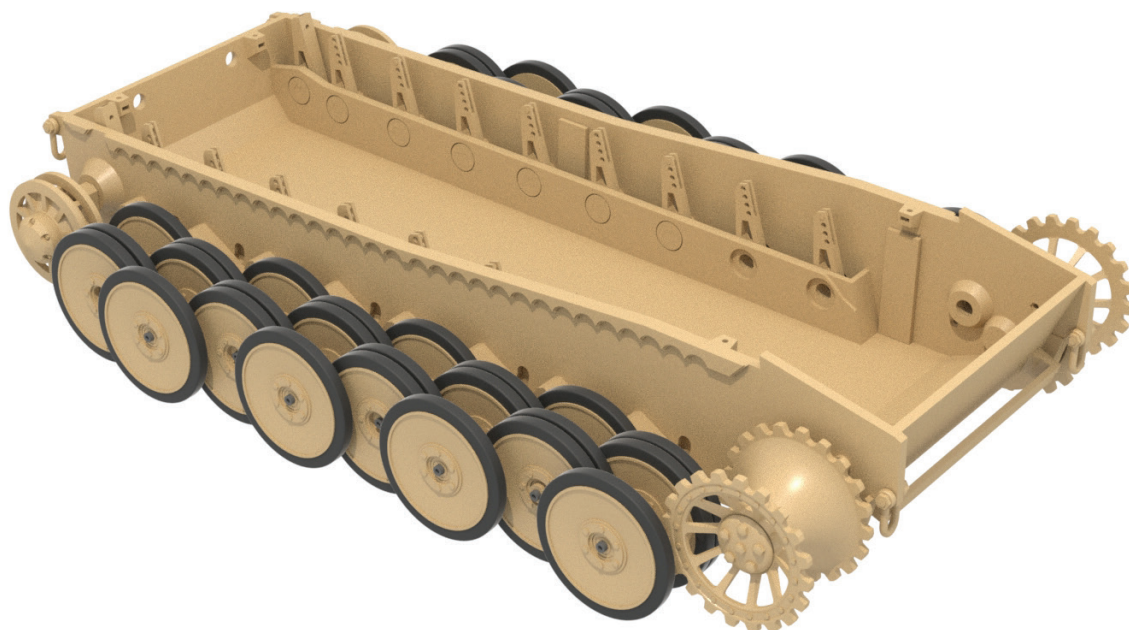
A-e5-right, left-2x
A-e7-right, left-2x
A-e9-right, left-2x

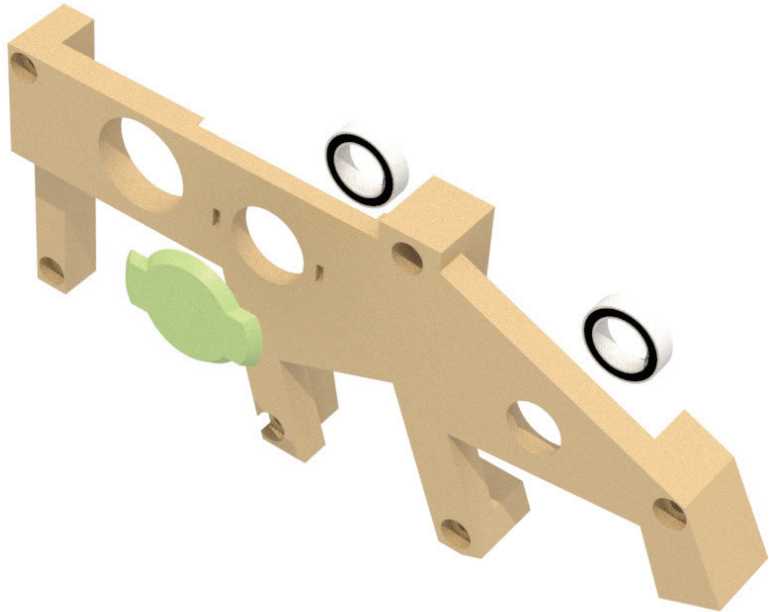
Files:

A-e10-right, left-2x
A-e11-right, left-2x

**Files:**

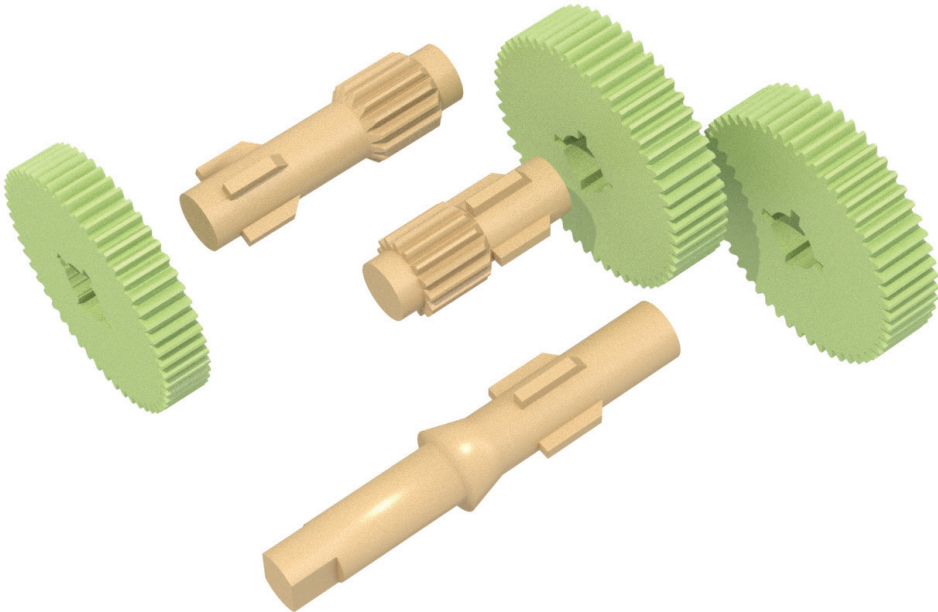
A-e1-right, left-2x
A-e4-right, left-2x





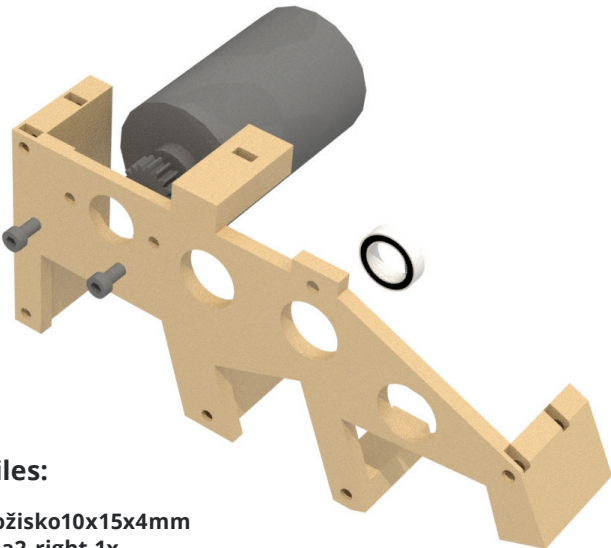
Files:

- Ložisko10x15x4mm-2x
- P-a1-right-1x
- P-a1-left-1x
- P-a1-right, left-2x



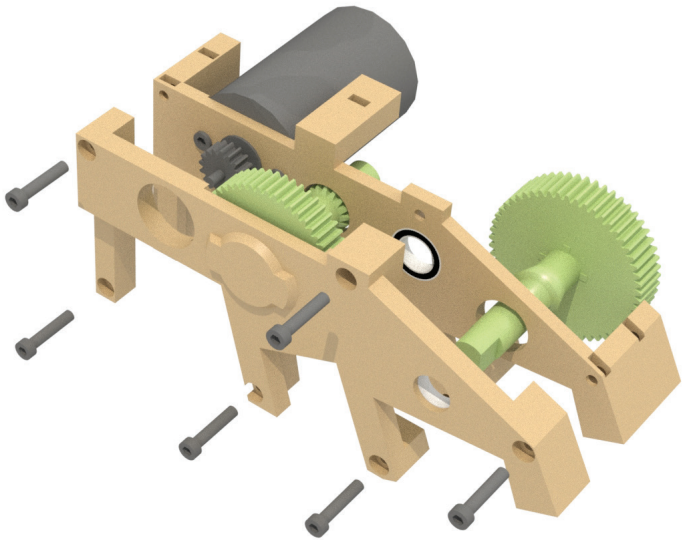
Files:

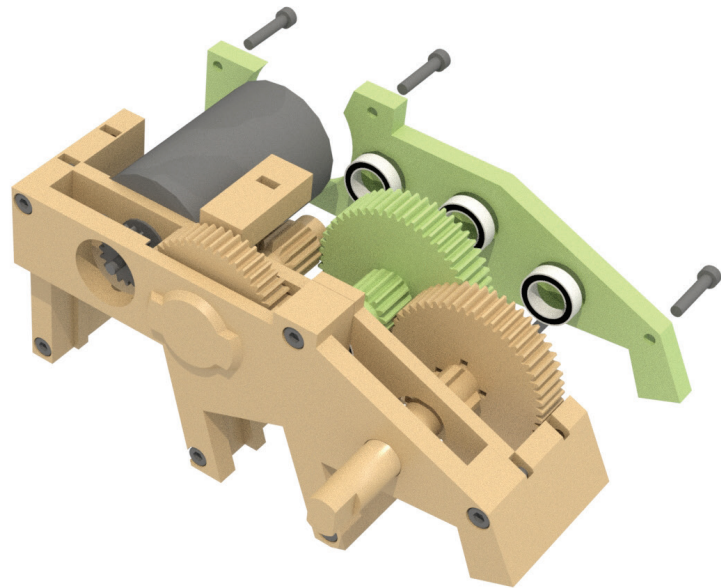
- P-b1-right, left-2x
- P-b2-right, left-2x
- P-b3-right, left-2x
- P-b4-right, left-2x
- P-b5-right, left-2x
- P-b6-right, left-2x



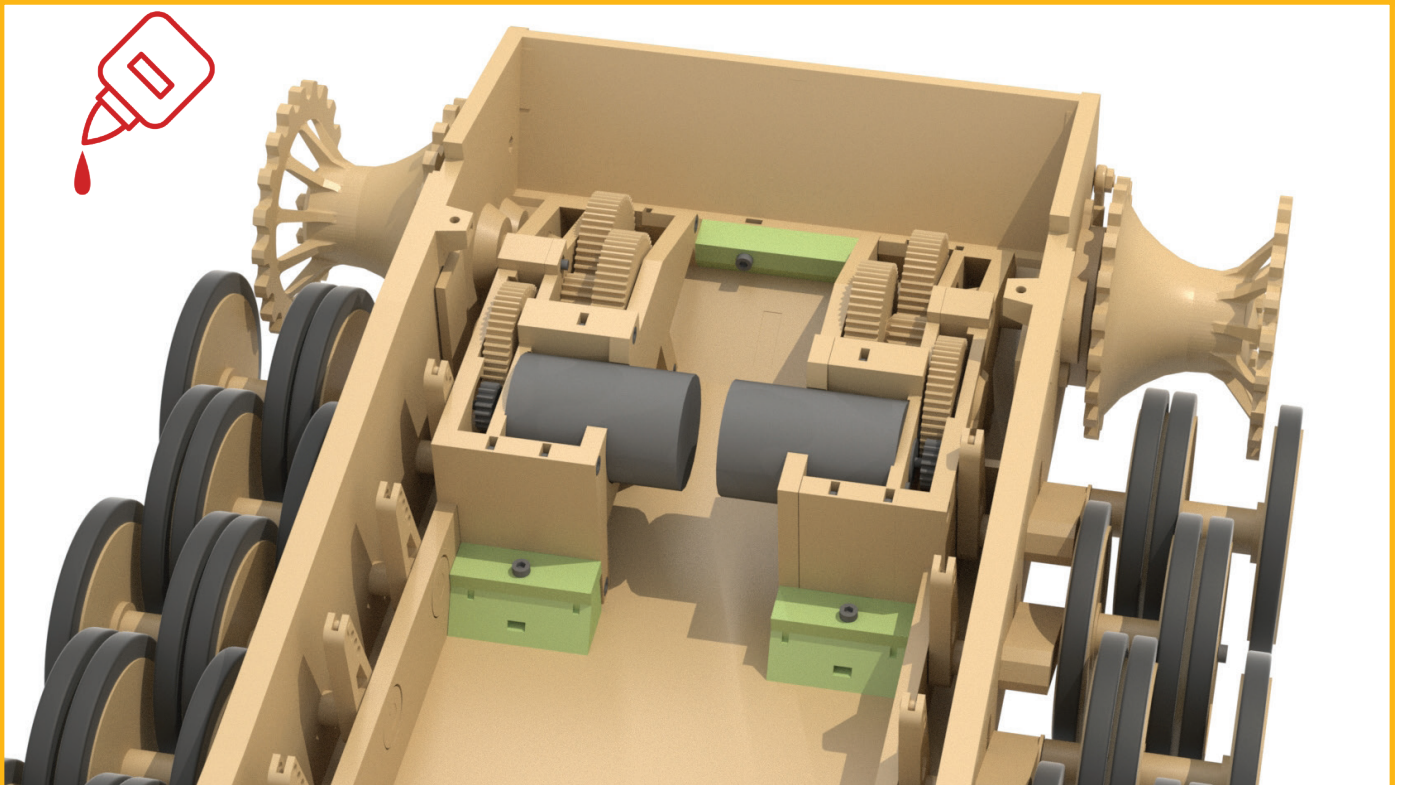
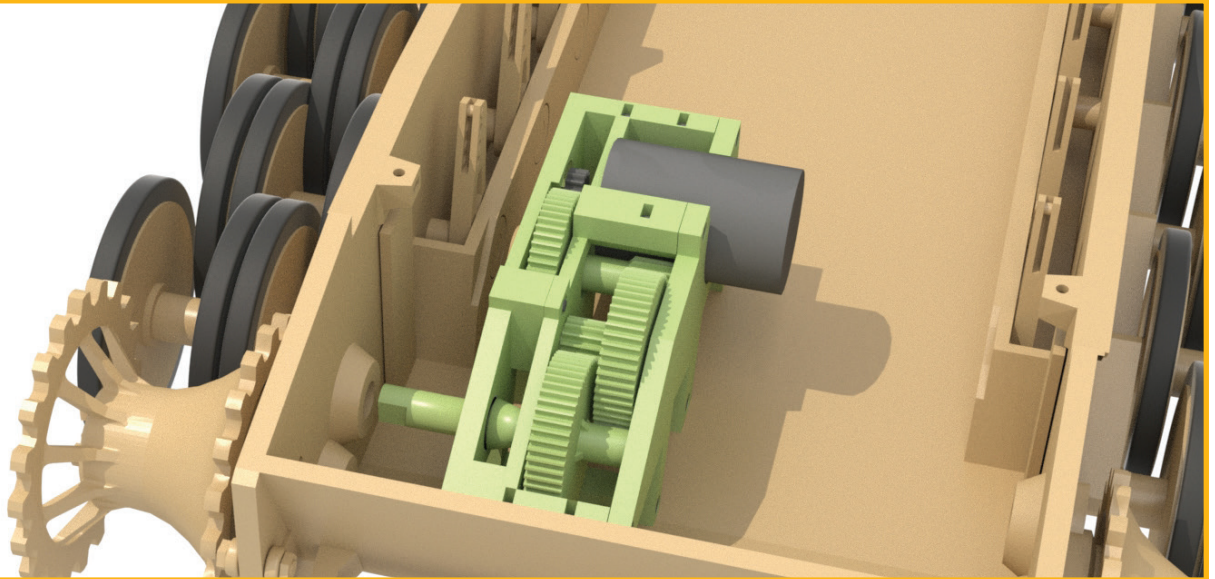
Files:

- Ložisko10x15x4mm
- P-a2-right-1x
- P-a2-left-1x



**Files:**

Ložisko10x15x6mm
P-a3-right-1x
P-a3-left-1x



Z

drát Ø 2mm



Files:

pás:
Z-a1-220x
Z-a2-440x

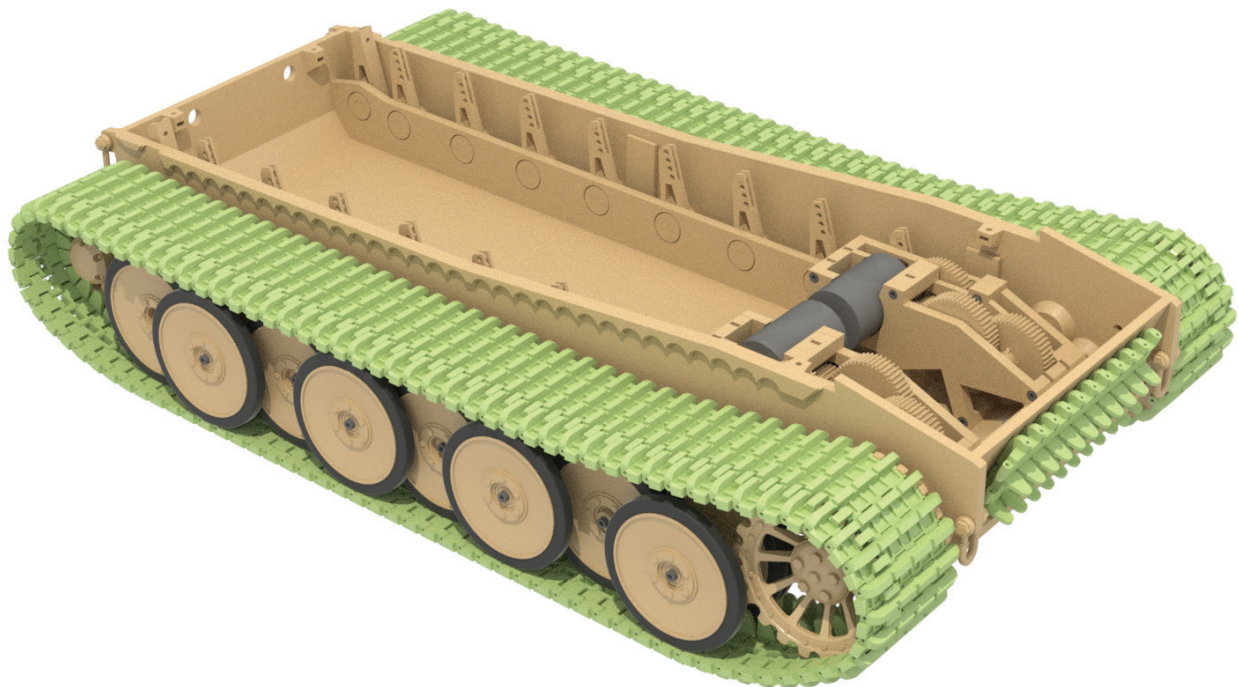
pás přední krytí:
Z-a1-11x
Z-a2-22x

pás věž:
Z-a1-7x
Z-a2-14x

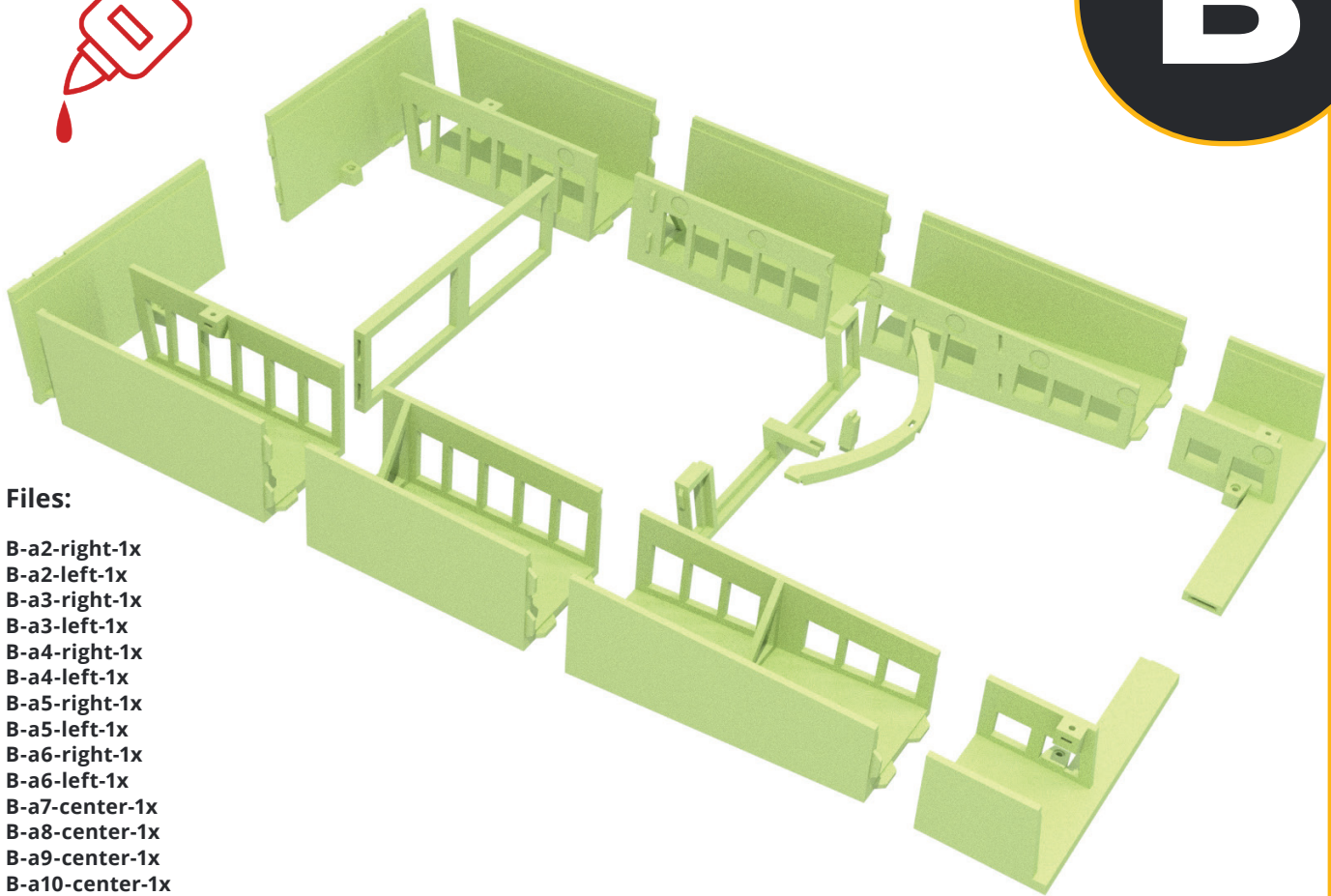


Files:

celkem pás:
Z-a1-238x
Z-a2-476x

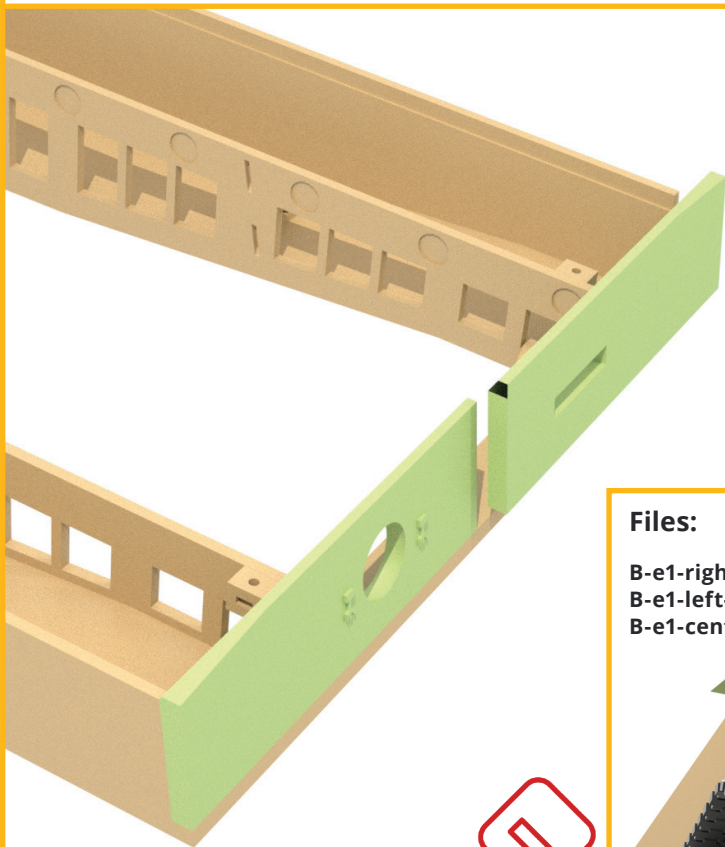


B



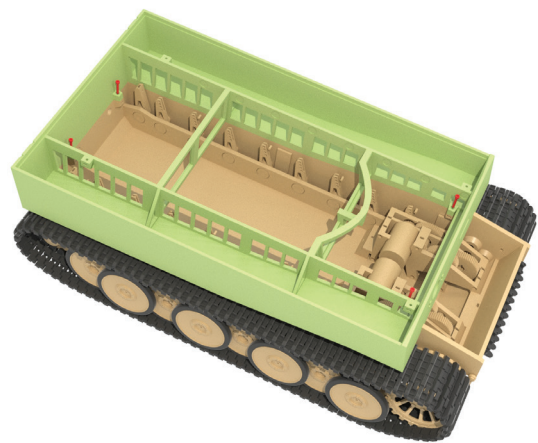
Files:

- B-a2-right-1x
- B-a2-left-1x
- B-a3-right-1x
- B-a3-left-1x
- B-a4-right-1x
- B-a4-left-1x
- B-a5-right-1x
- B-a5-left-1x
- B-a6-right-1x
- B-a6-left-1x
- B-a7-center-1x
- B-a8-center-1x
- B-a9-center-1x
- B-a10-center-1x



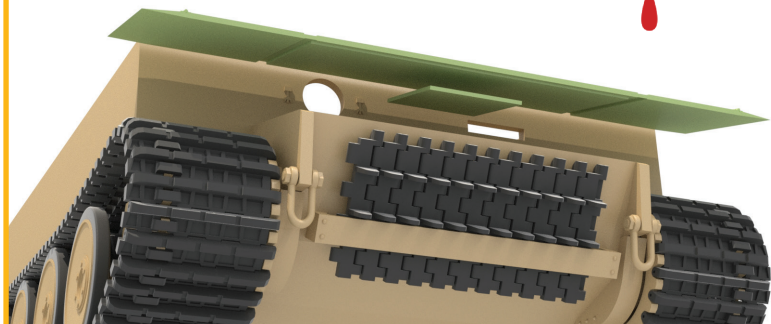
Files:

- B-a1-right-1x
- B-a1-left-1x

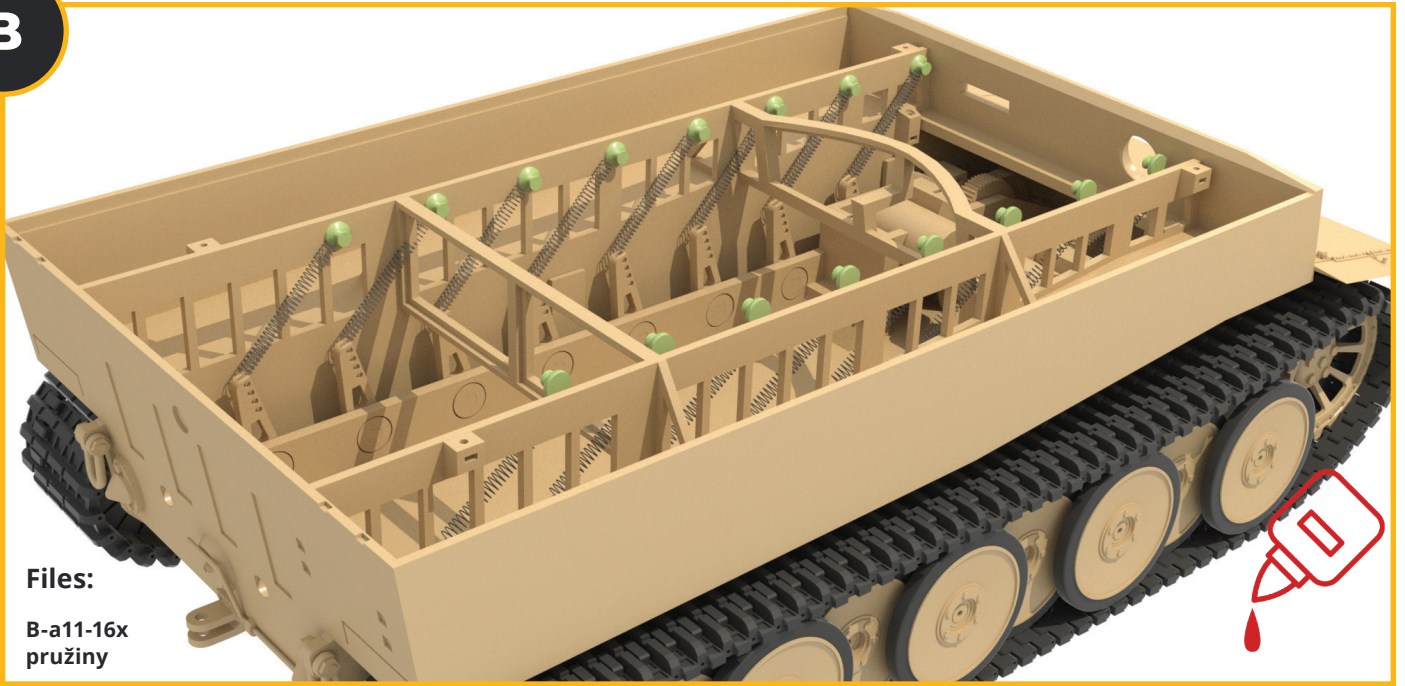


Files:

- B-e1-right-1x
- B-e1-left-1x
- B-e1-center-1x

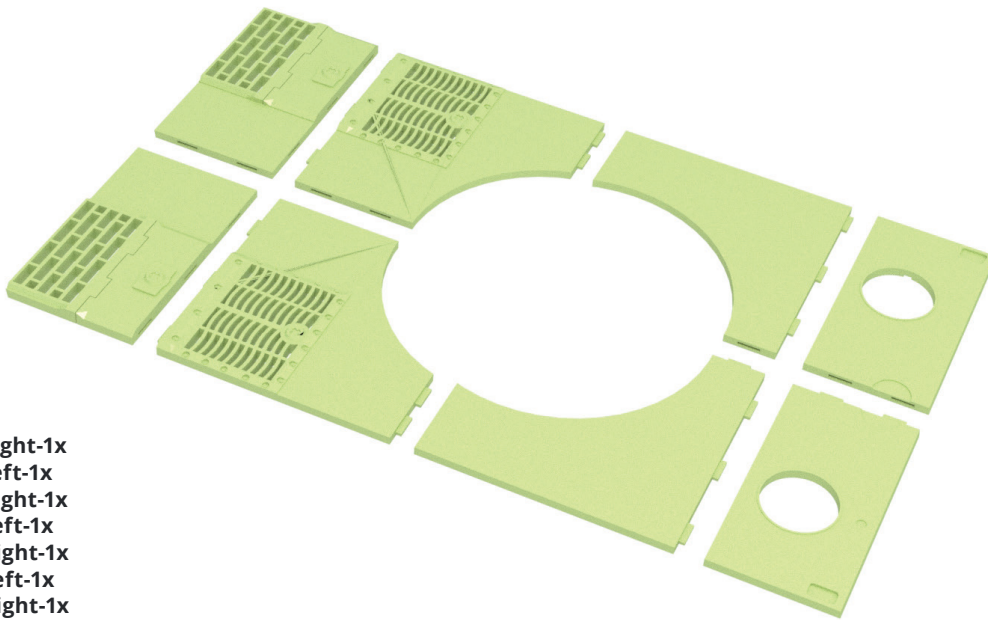


B



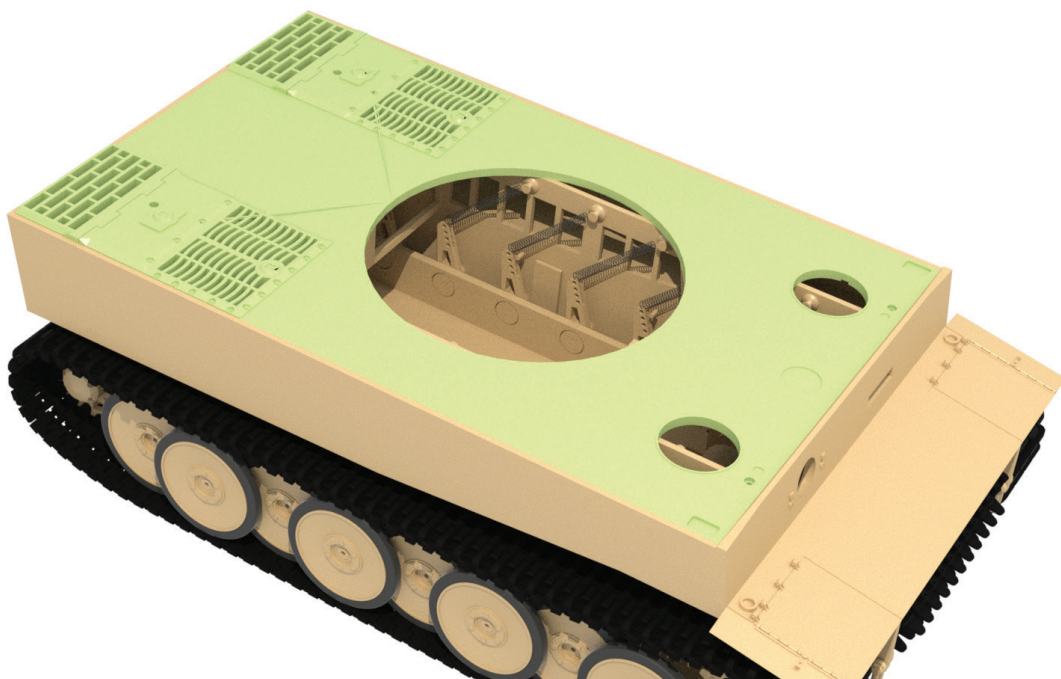
Files:

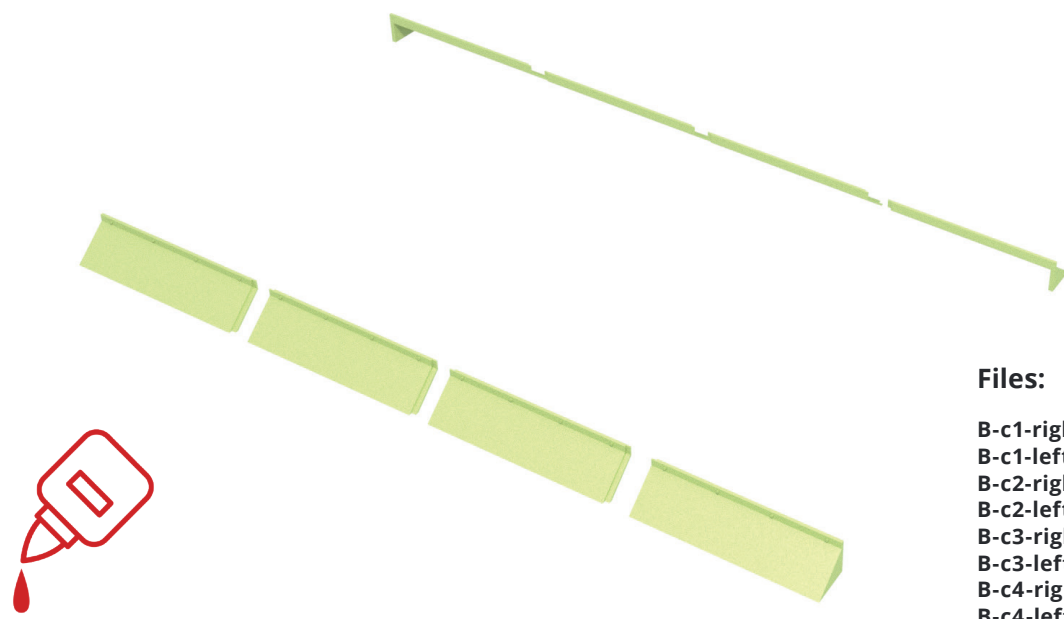
**B-a11-16x
pružiny**



Files:

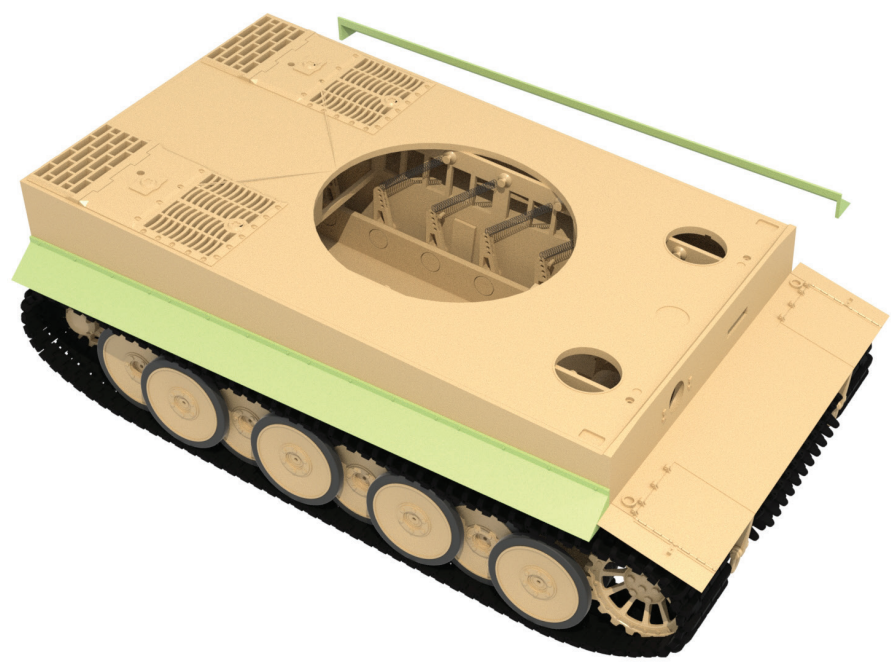
**B-b1-right-1x
B-b1-left-1x
B-b2-right-1x
B-b2-left-1x
B-b3-right-1x
B-b3-left-1x
B-b4-right-1x
B-b4-left-1x**





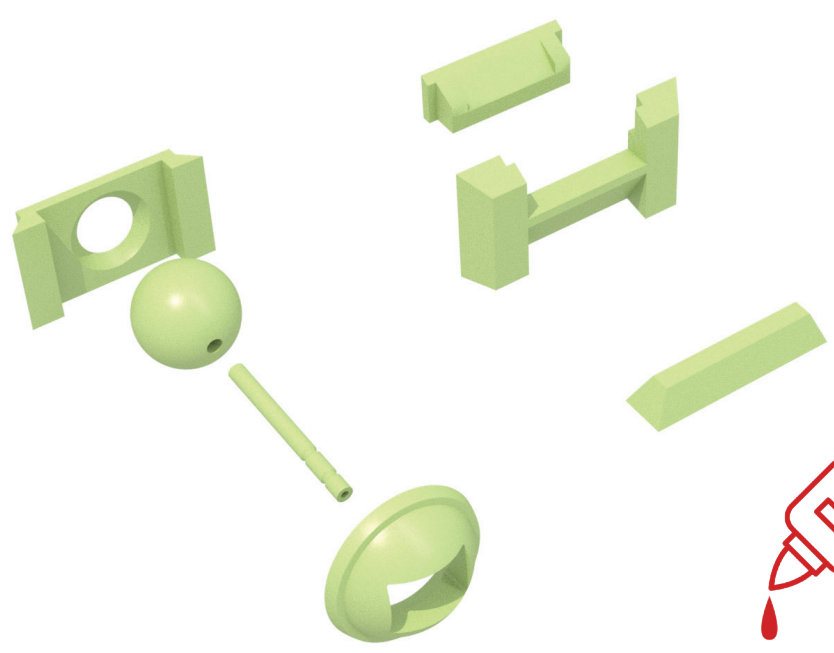
Files:

- B-c1-right-1x
- B-c1-left-1x
- B-c2-right-1x
- B-c2-left-1x
- B-c3-right-1x
- B-c3-left-1x
- B-c4-right-1x
- B-c4-left-1x

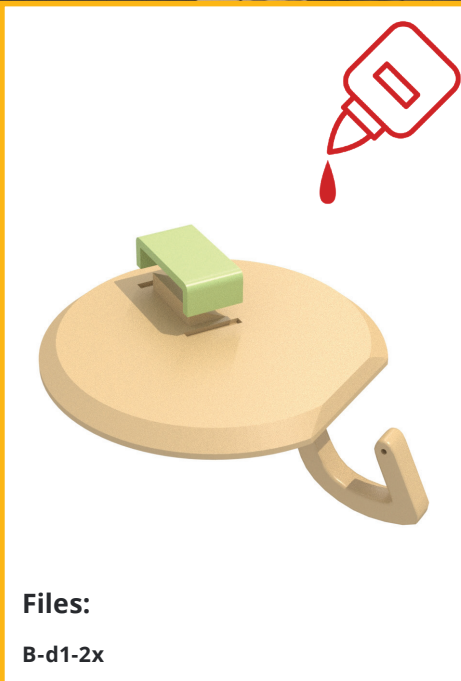
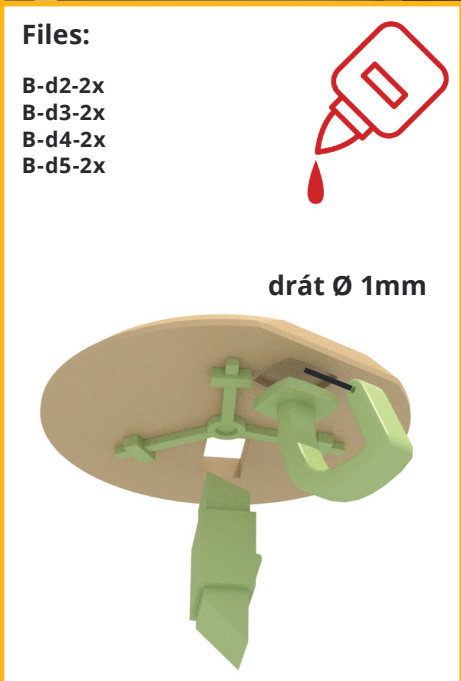
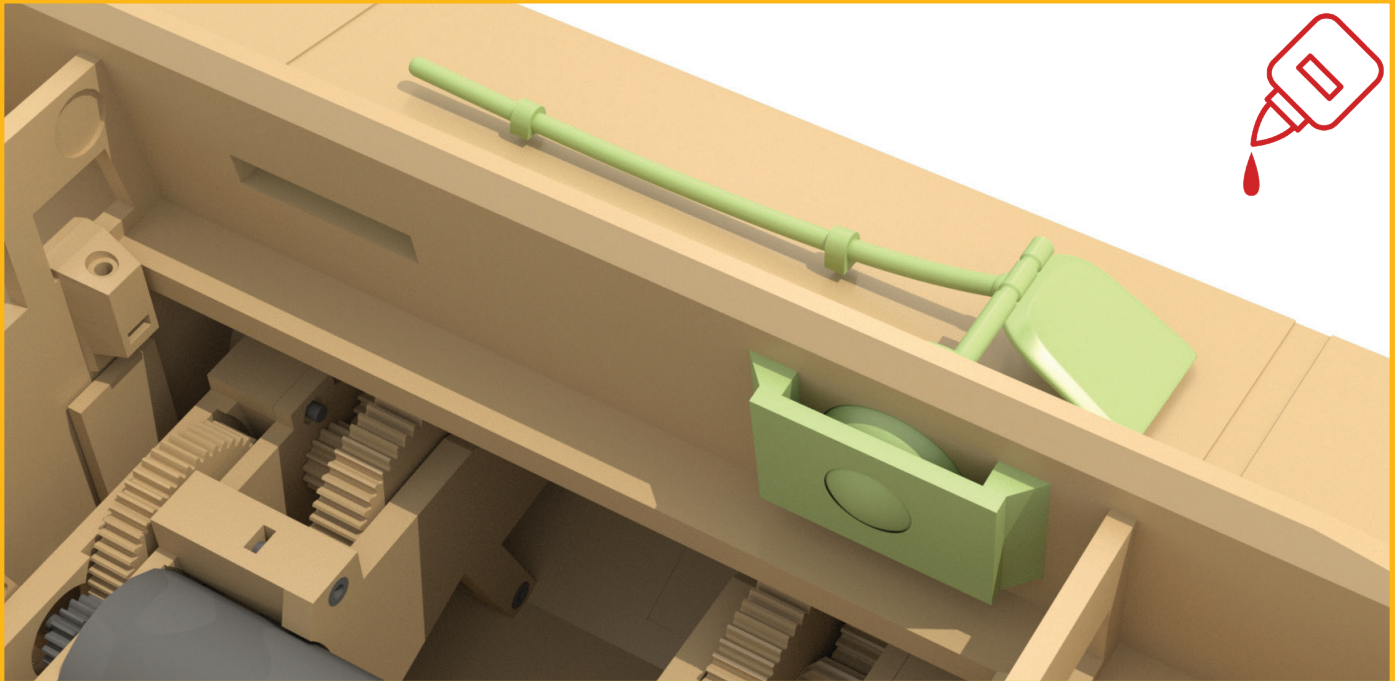
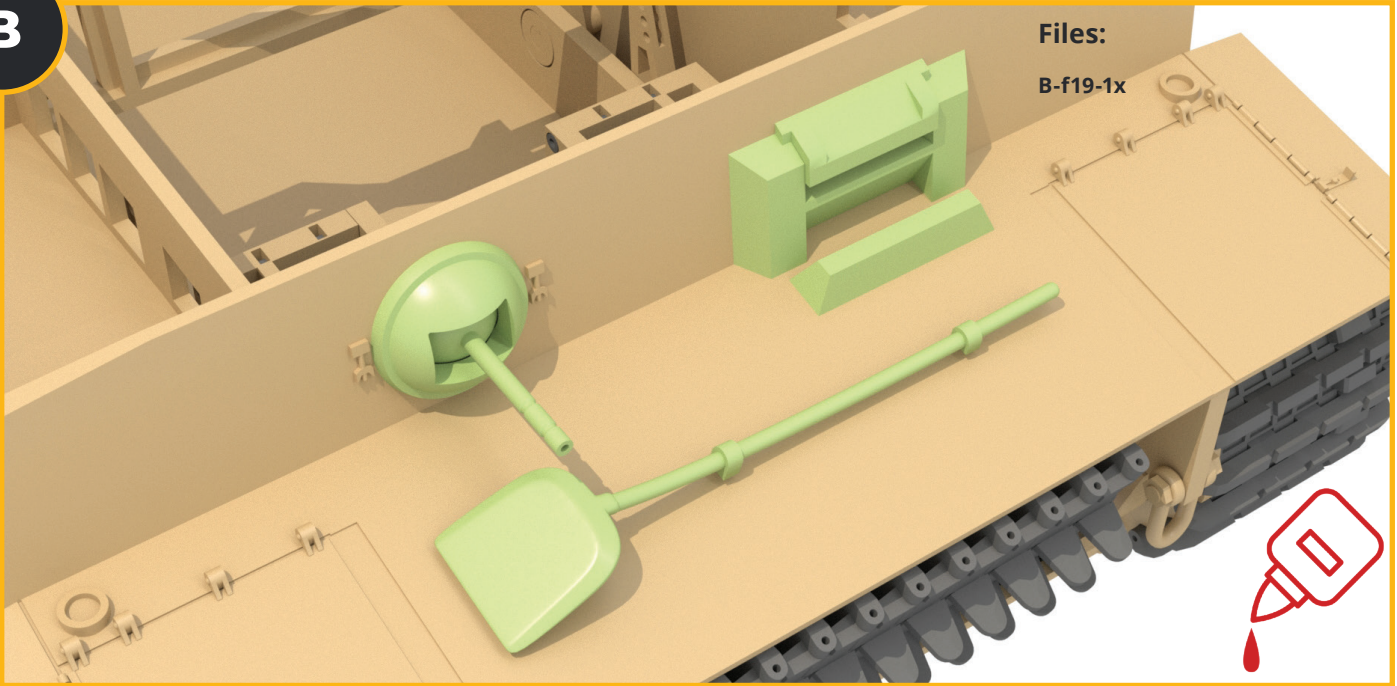


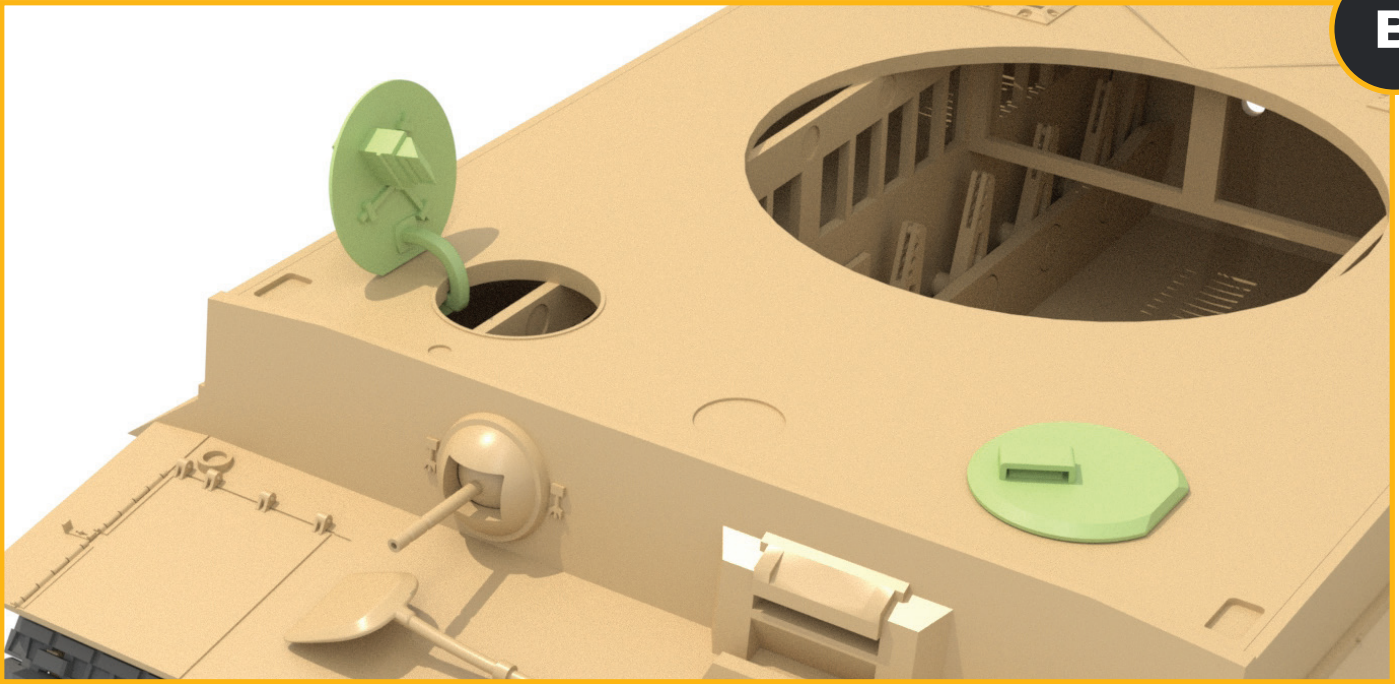
Files:

- B-f1-1x
- B-f2-1x
- B-f3-1x
- B-f4-1x
- B-f5-1x
- B-f6-1x
- B-f7-1x

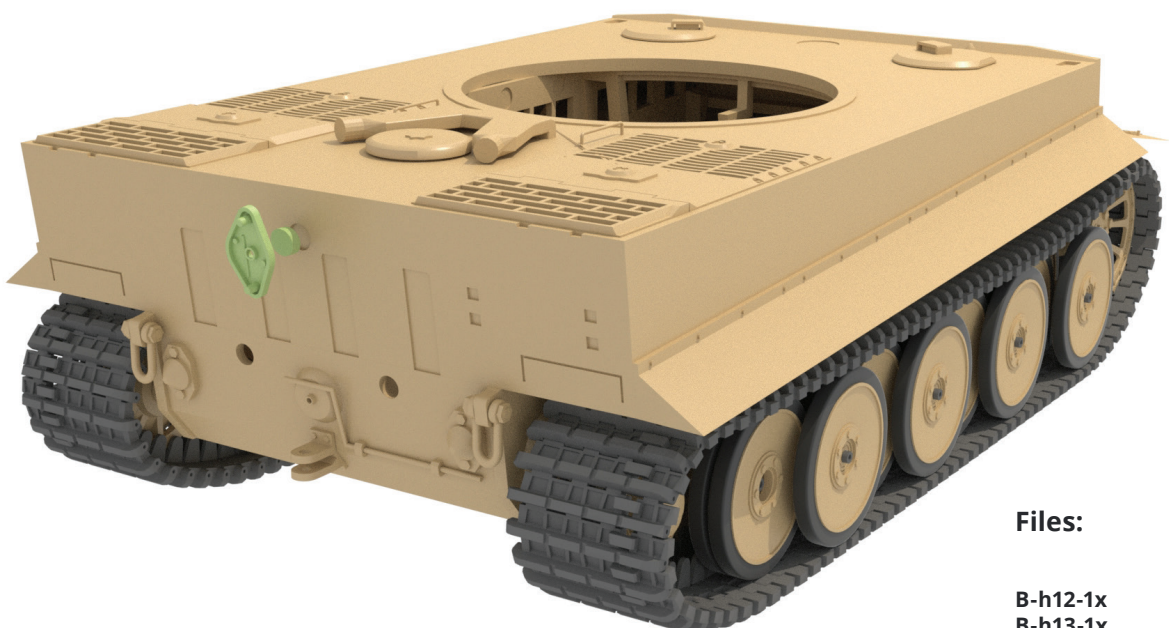
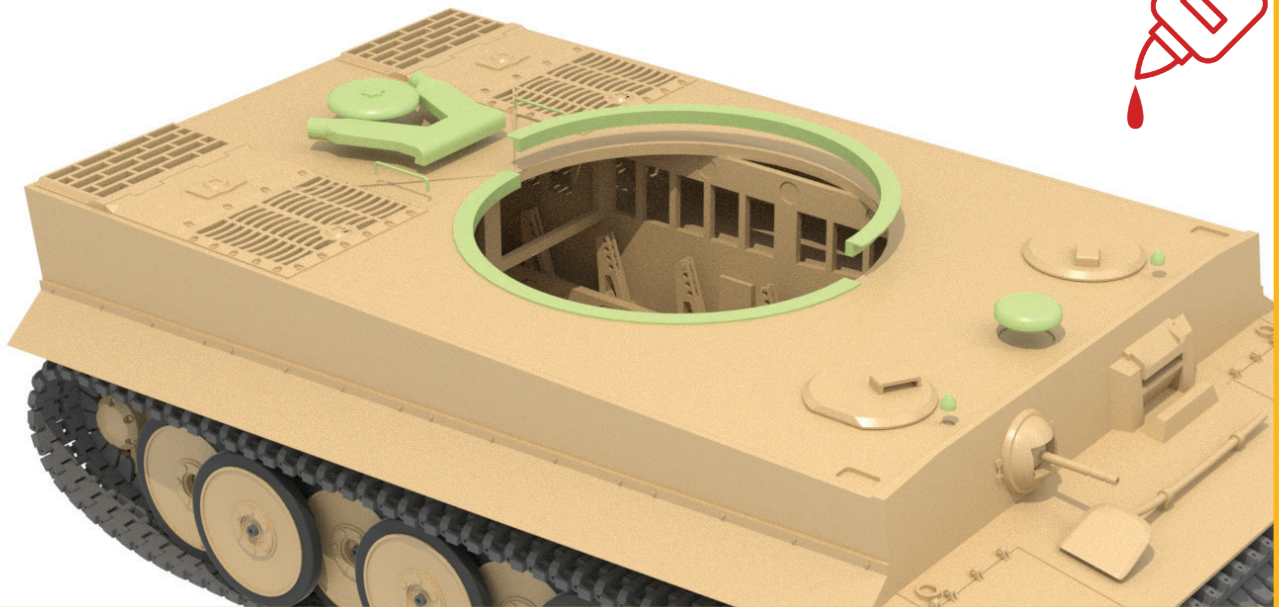


B



**Files:**

B-f8-1x
B-f9-2x
B-g1-1x
B-g3-1x
B-g4-2x
B-j1-2x

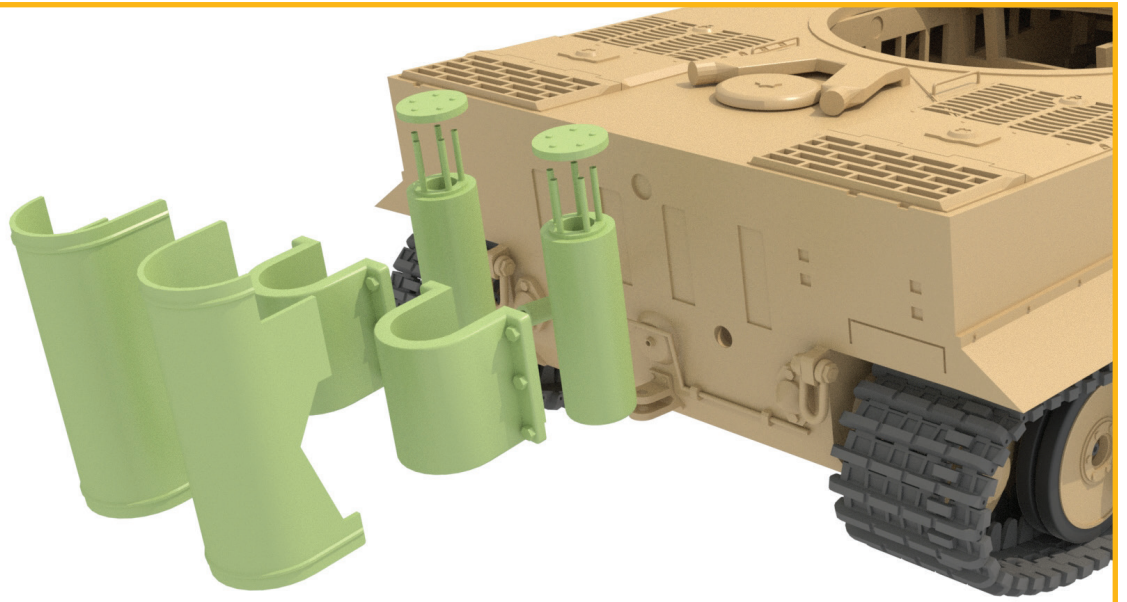
**Files:**

B-h12-1x
B-h13-1x

B

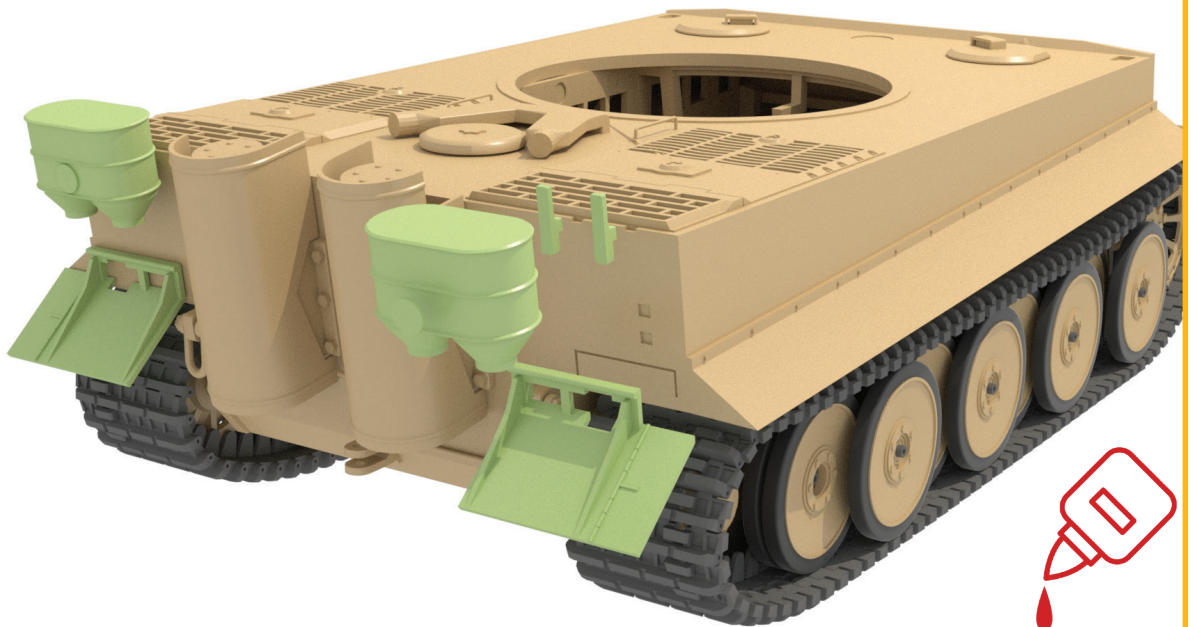
Files:

- B-h14-2x
- B-h15-right-1x
- B-h15-left-1x
- B-h16-right-1x
- B-h16-left-1x
- B-h17-2x
- B-h18-right-1x
- B-h18-left-1x



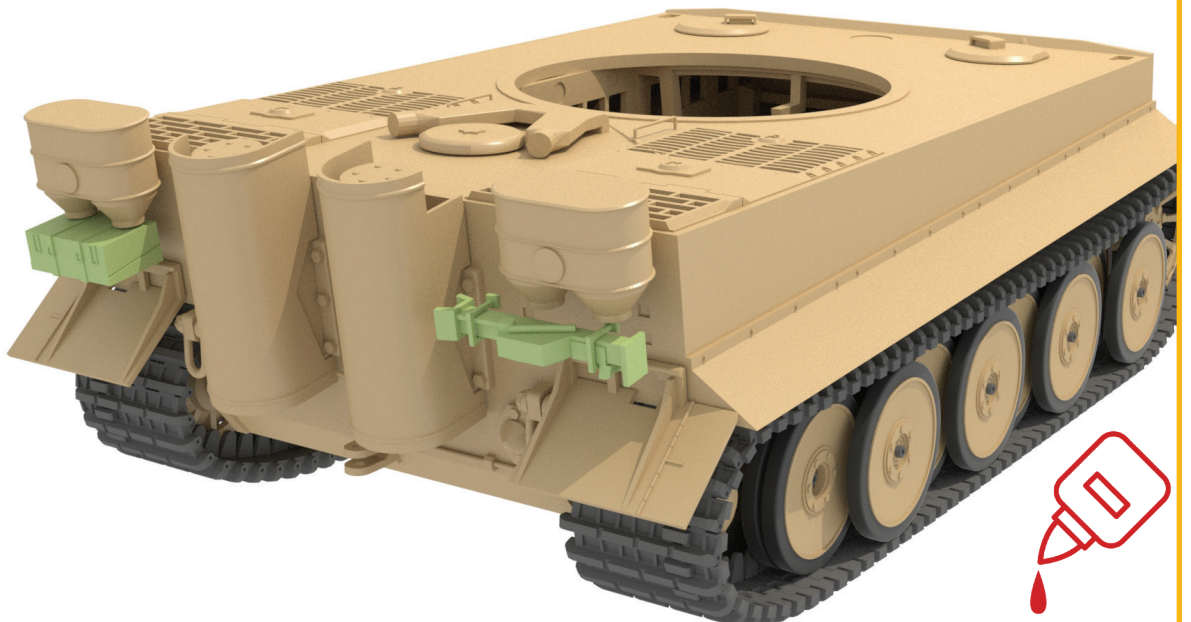
Files:

- B-h1-right-1x
- B-h1-left-1x
- B-h3-right-1x
- B-h4-2x
- B-h5-4x



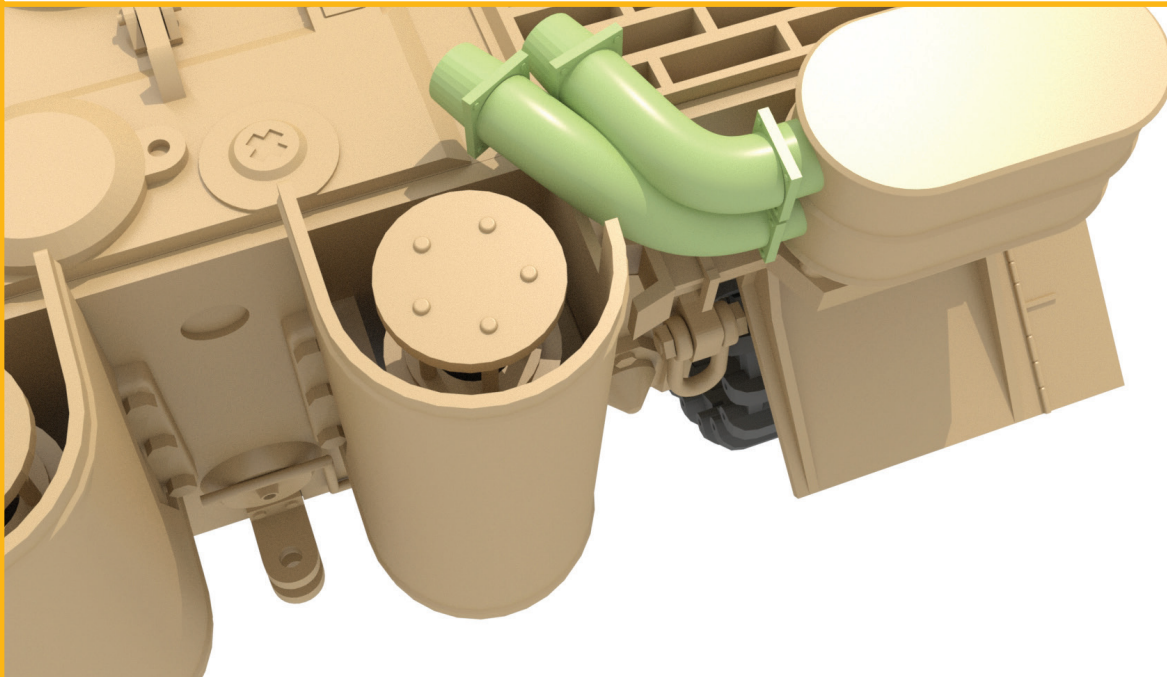
Files:

- B-h2-1x
- B-h6-1x
- B-h7-1x



Files:

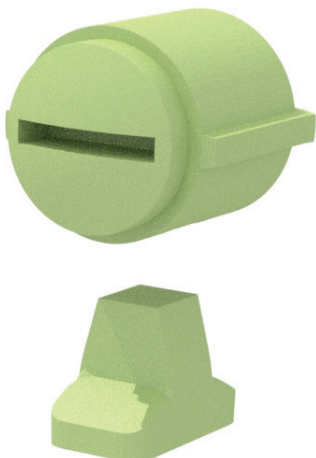
B-h2-1x
nevím

**Files:**

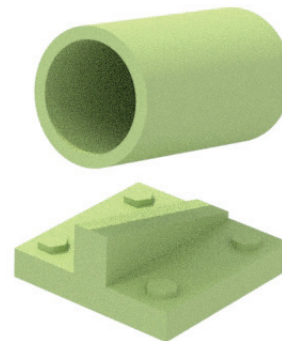
B-h7-right-1x
B-h8-right-1x
B-h7-left-1x
B-h8-left-1x
B-h9-8x
B-h10-4x
B-h11-right-1x
B-h11-left-1x

Files:

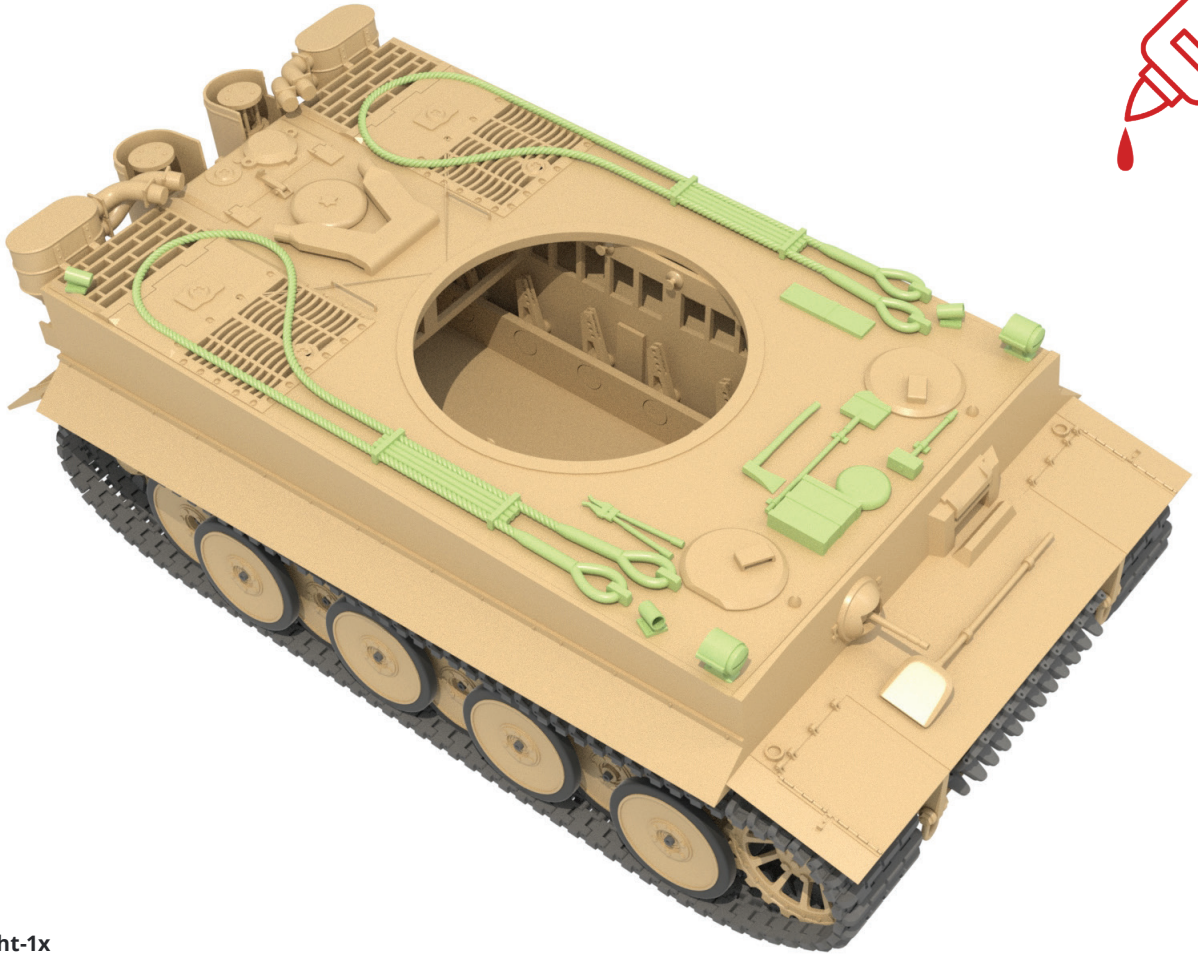
B-f10-2x
B-f11-2x

**Files:**

B-f20-3x
B-f21-3x

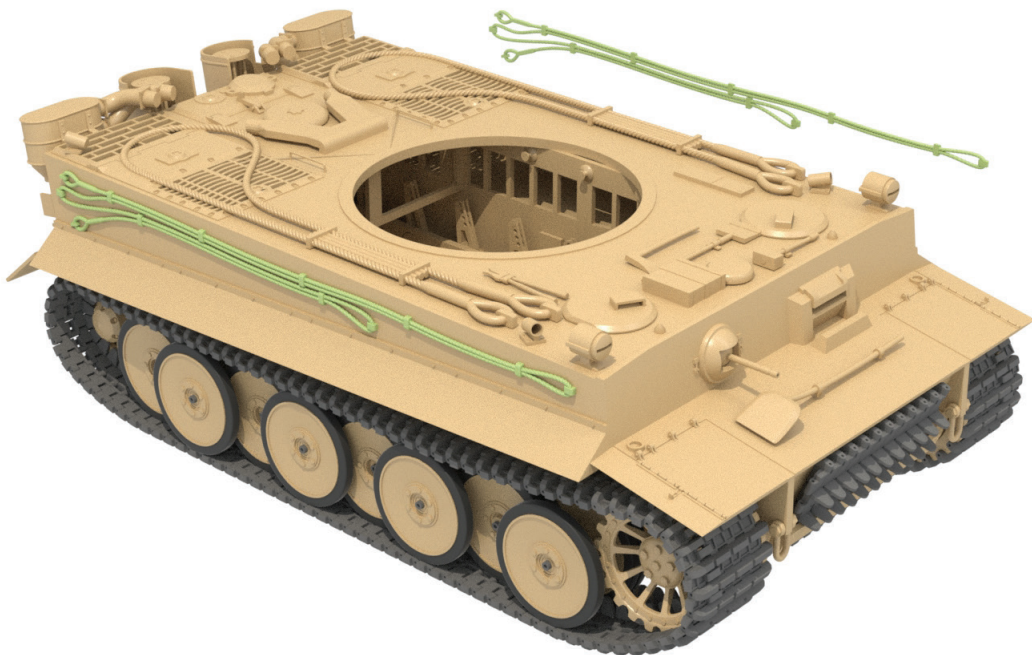


B



Files:

- B-f8-1x
- B-f12-1x
- B-f13-1x
- B-f14-1x
- B-f15-1x
- B-f16-1x
- B-f17-1x
- B-f18-right-1x
- B-f18-left-1x



Files:

- B-k1-right -1x
- B-k2-right -1x
- B-k3-right -1x
- B-k1-left -1x
- B-k2-left -1x
- B-k3-left -1x



Files:

- C-a1-1x
- C-a2-1x
- C-b1-1x
- C-b2-1x



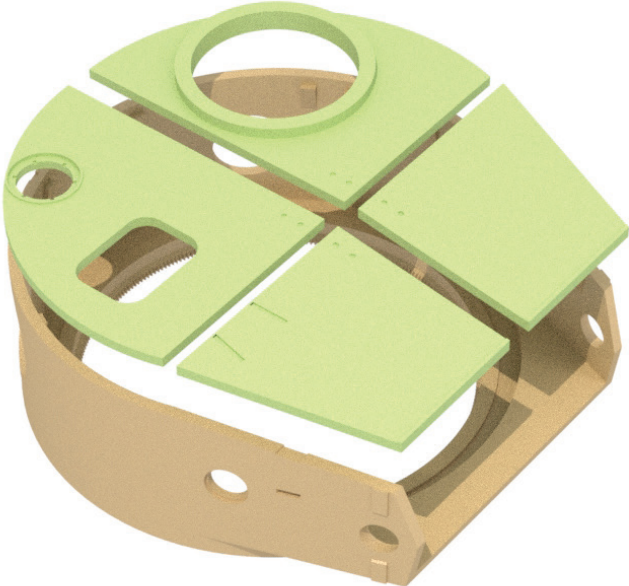
Files:

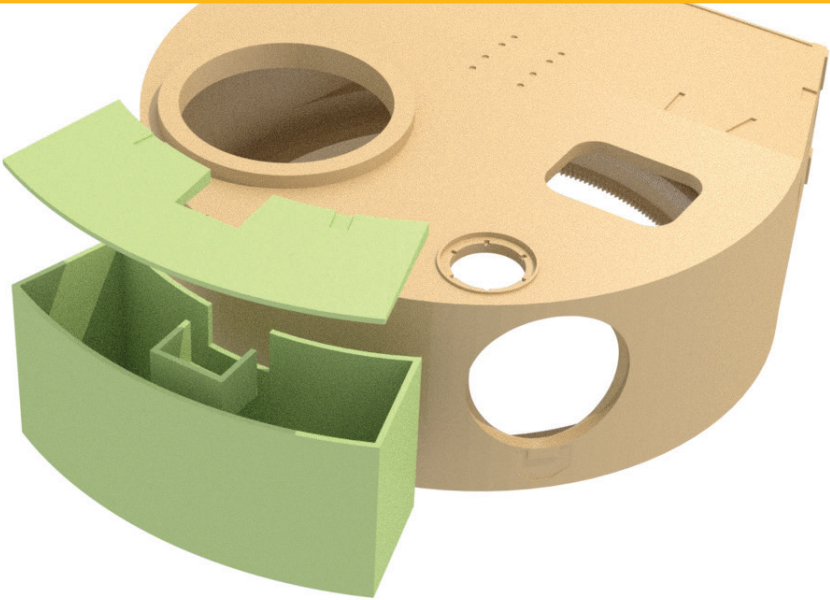
- C-b3-right-1x
- C-b3-left-1x



Files:

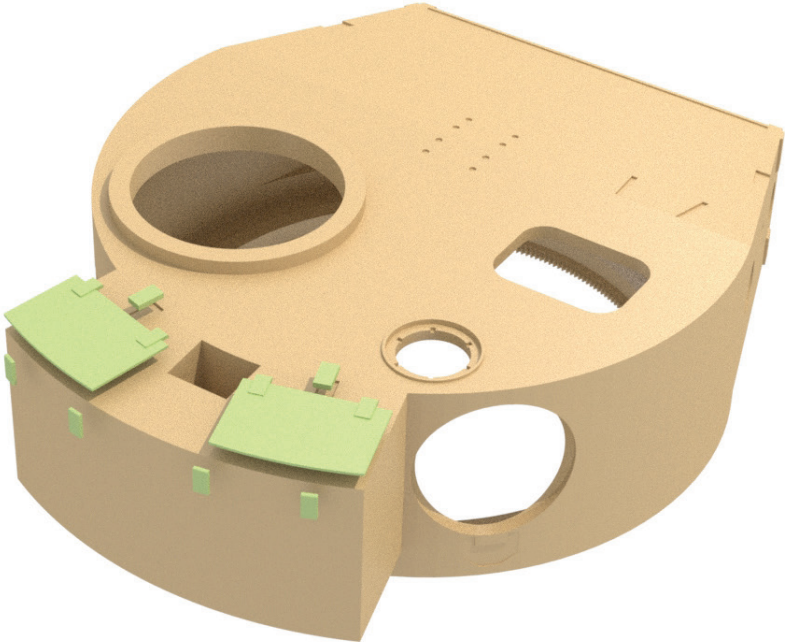
- C-b4-right-1x
- C-b4-left-1x
- C-b5-right-1x
- C-b5-left-1x





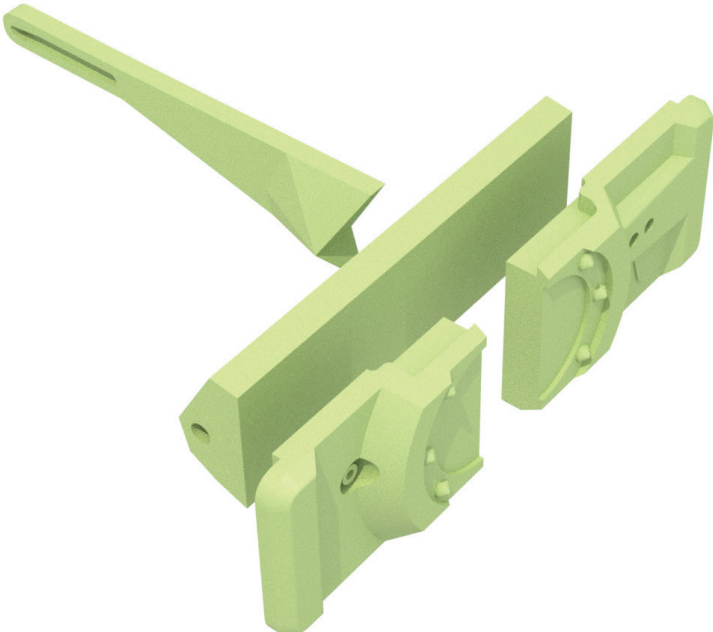
Files:

- C-b6-1x
- C-b7-1x
- C-b9-1x



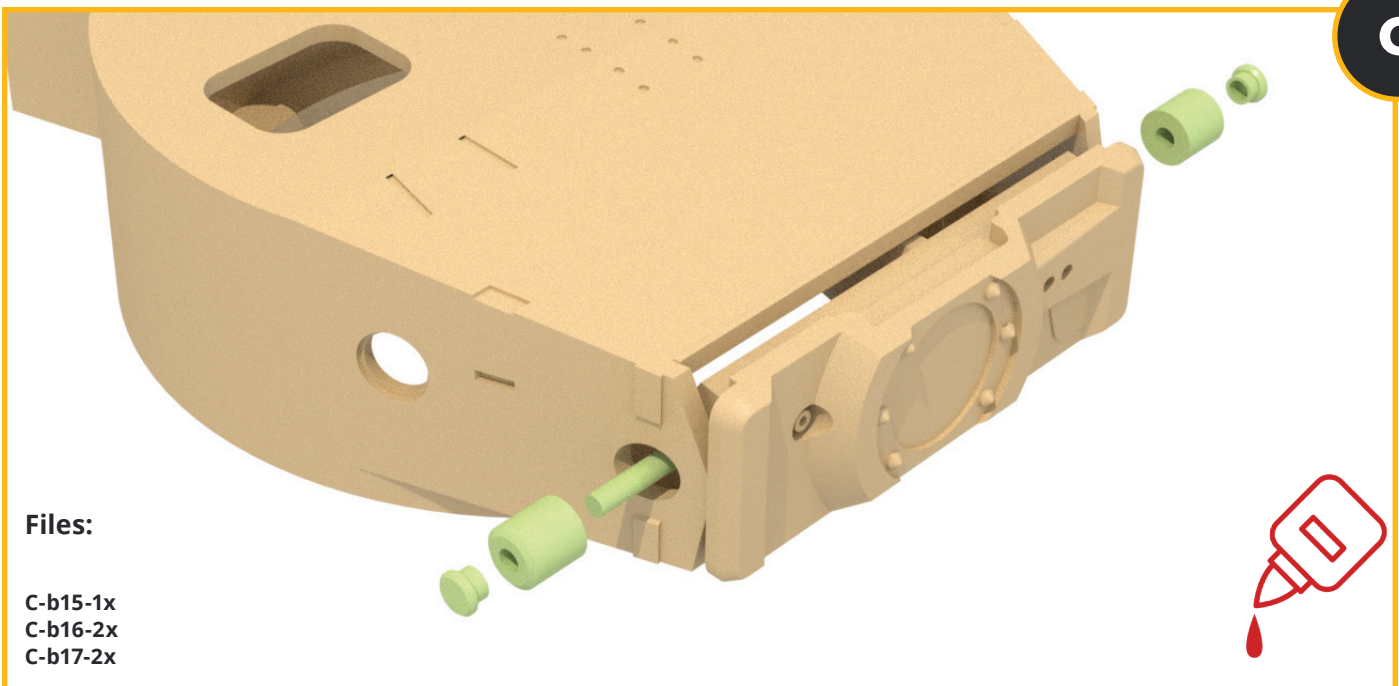
Files:

- C-b8-right-1x
- C-b8-left-1x
- C-b10-2x
- C-b11-4x



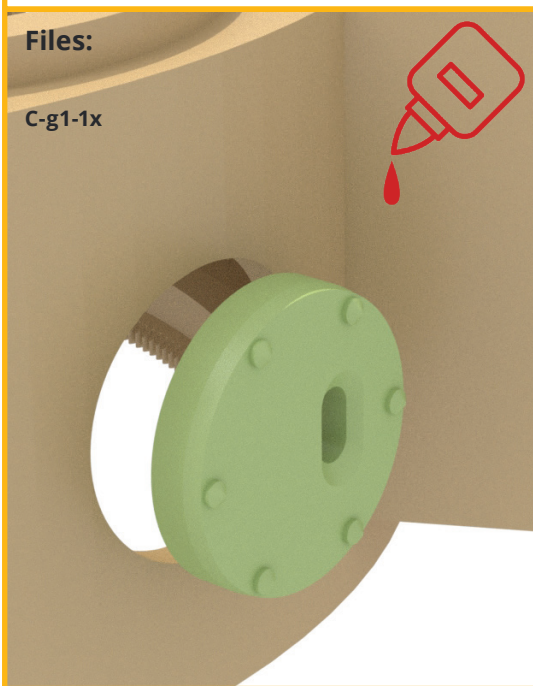
Files:

- C-b12-right-1x
- C-b12-left-1x
- C-b13-1x
- C-b14-1x



Files:

- C-b15-1x
- C-b16-2x
- C-b17-2x



Files:

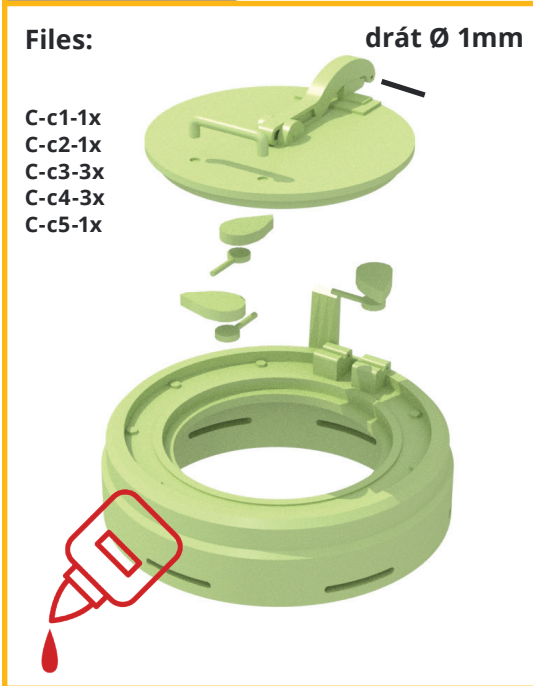
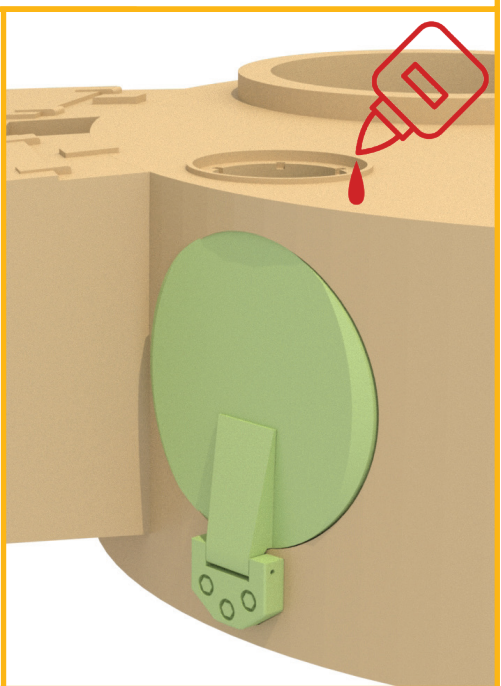
- C-g1-1x



Files:

- C-f1-1x
- C-f2-1x
- C-f3-1x

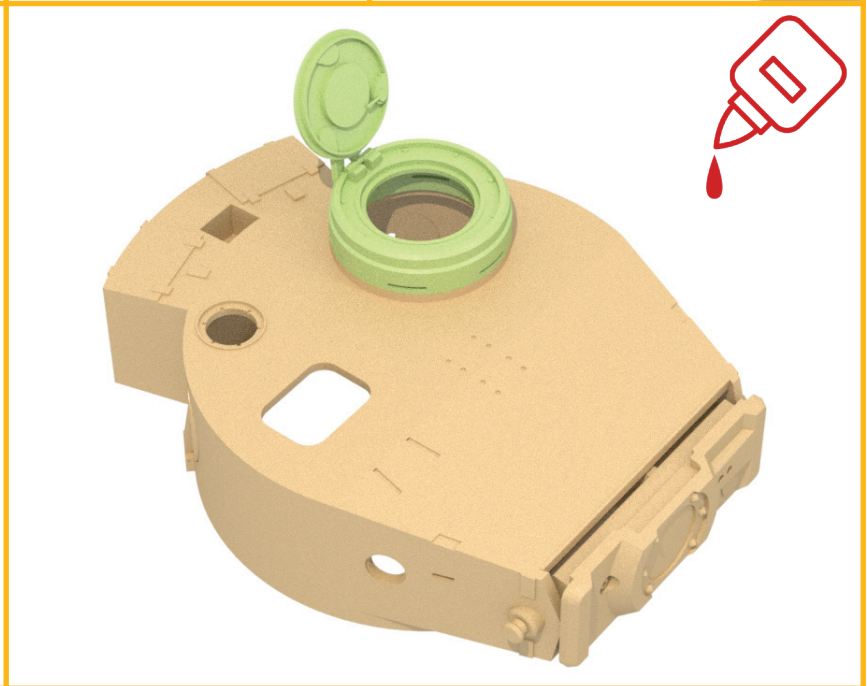
drát Ø 1mm



Files:

- C-c1-1x
- C-c2-1x
- C-c3-3x
- C-c4-3x
- C-c5-1x

drát Ø 1mm



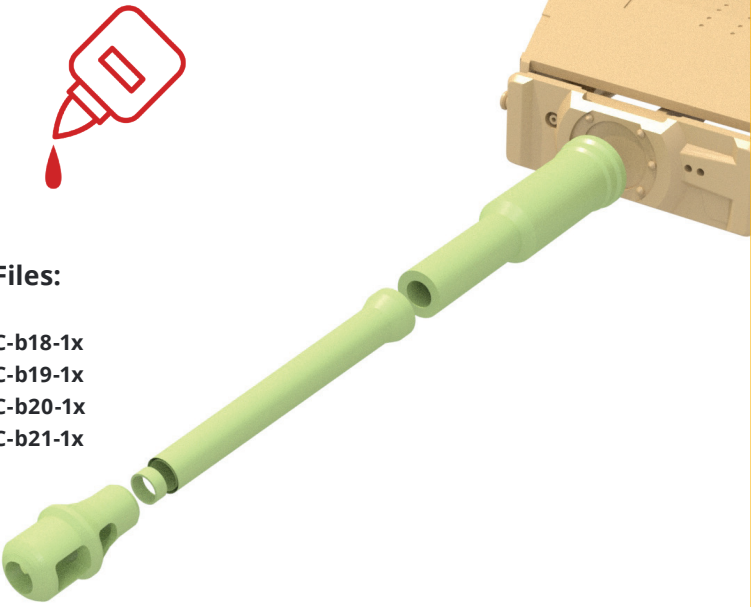


Files:

- C-d1-1x
- C-d2-1x
- C-d3-3x
- C-d4-1x
- C-d5-1x

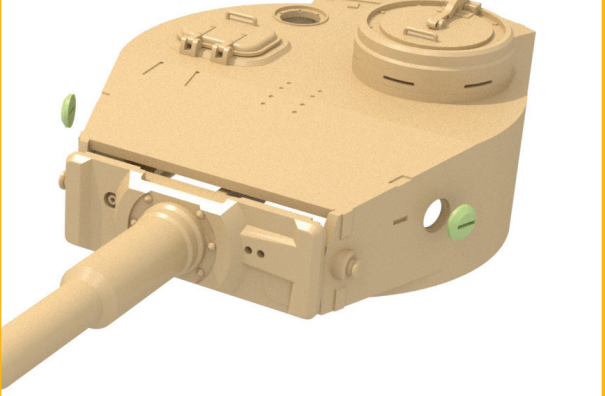


drát Ø 1mm



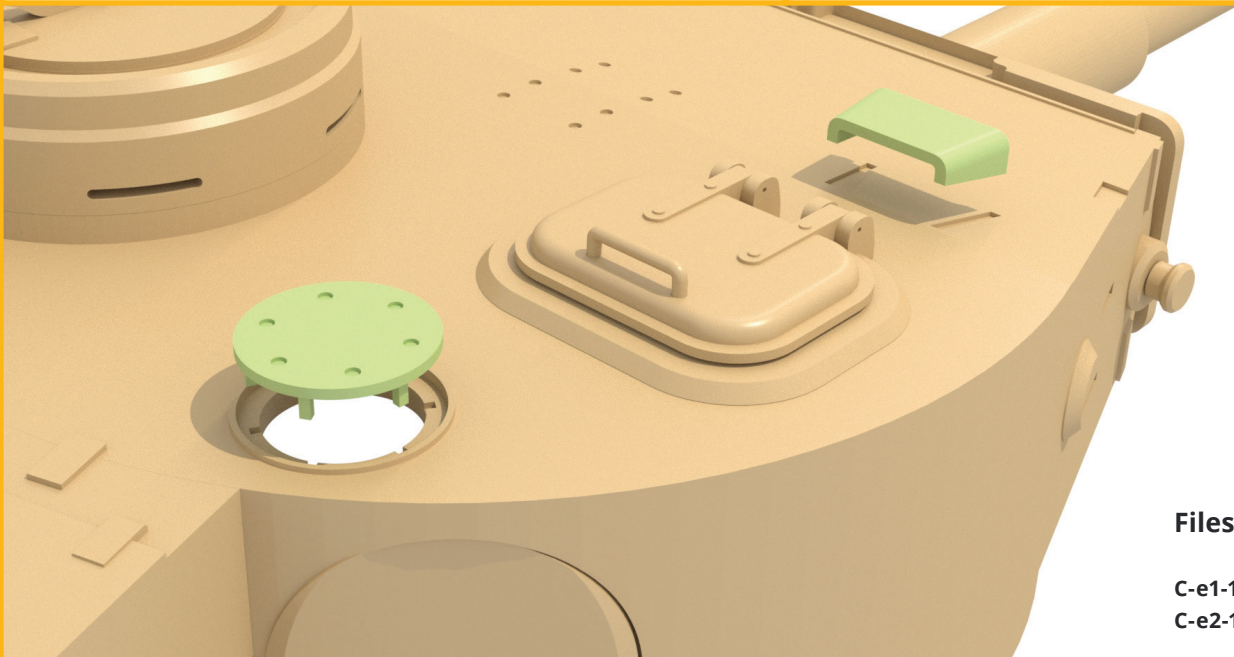
Files:

- C-b18-1x
- C-b19-1x
- C-b20-1x
- C-b21-1x



Files:

- C-b22-2x



Files:

- C-e1-1x
- C-e2-1x

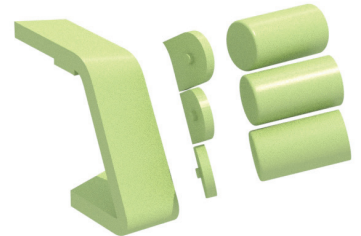
Files:

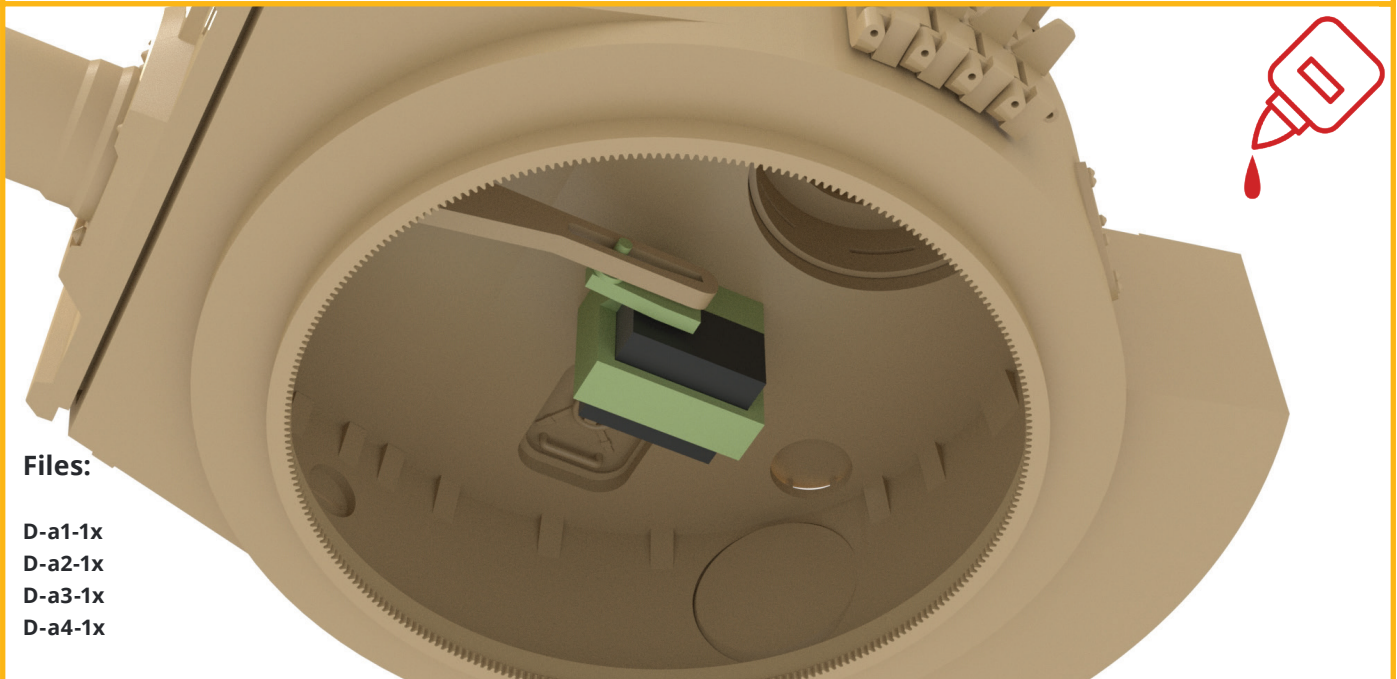
- C-e3-7x
- C-e4-7x
- Z-a1-7x
- Z-a2-14



Files:

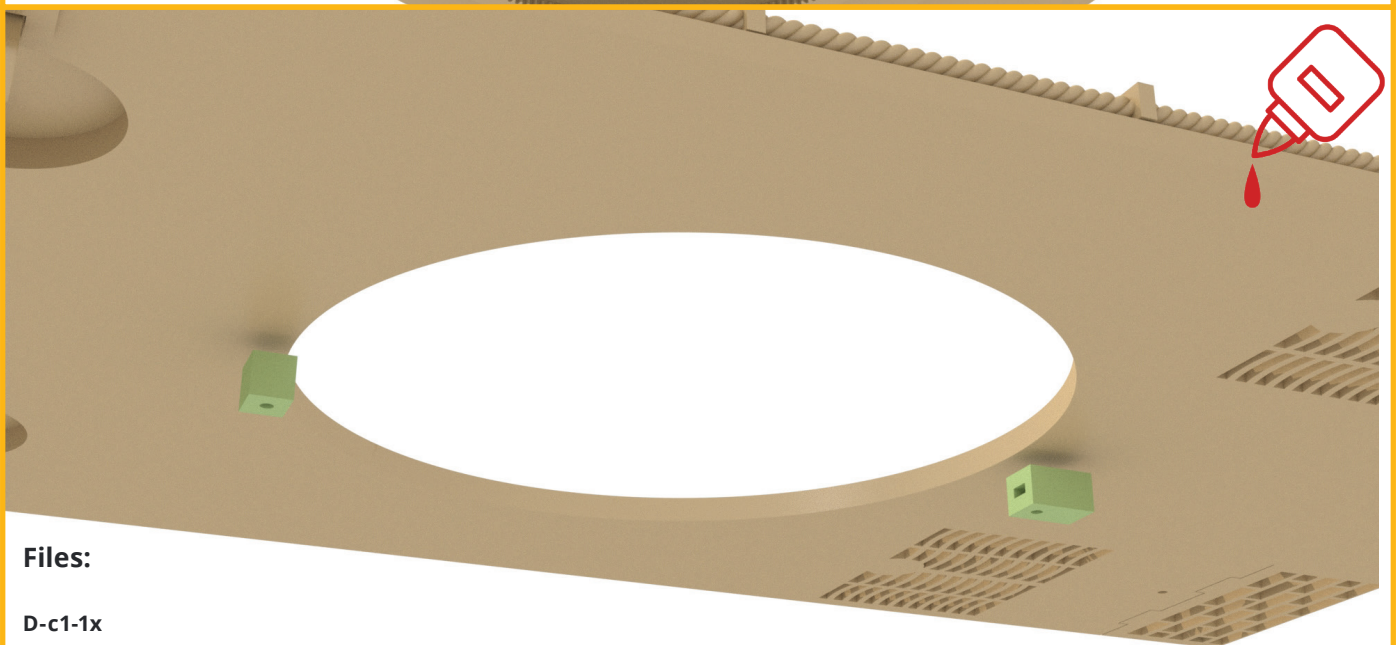
- C-h1-right-1x
- C-h1-left-1x
- C-h2-right-1x
- C-h3-right-1x
- C-h4-right-1x
- C-h2-left-1x
- C-h3-left-1x
- C-h4-left-1x
- C-h5-6x





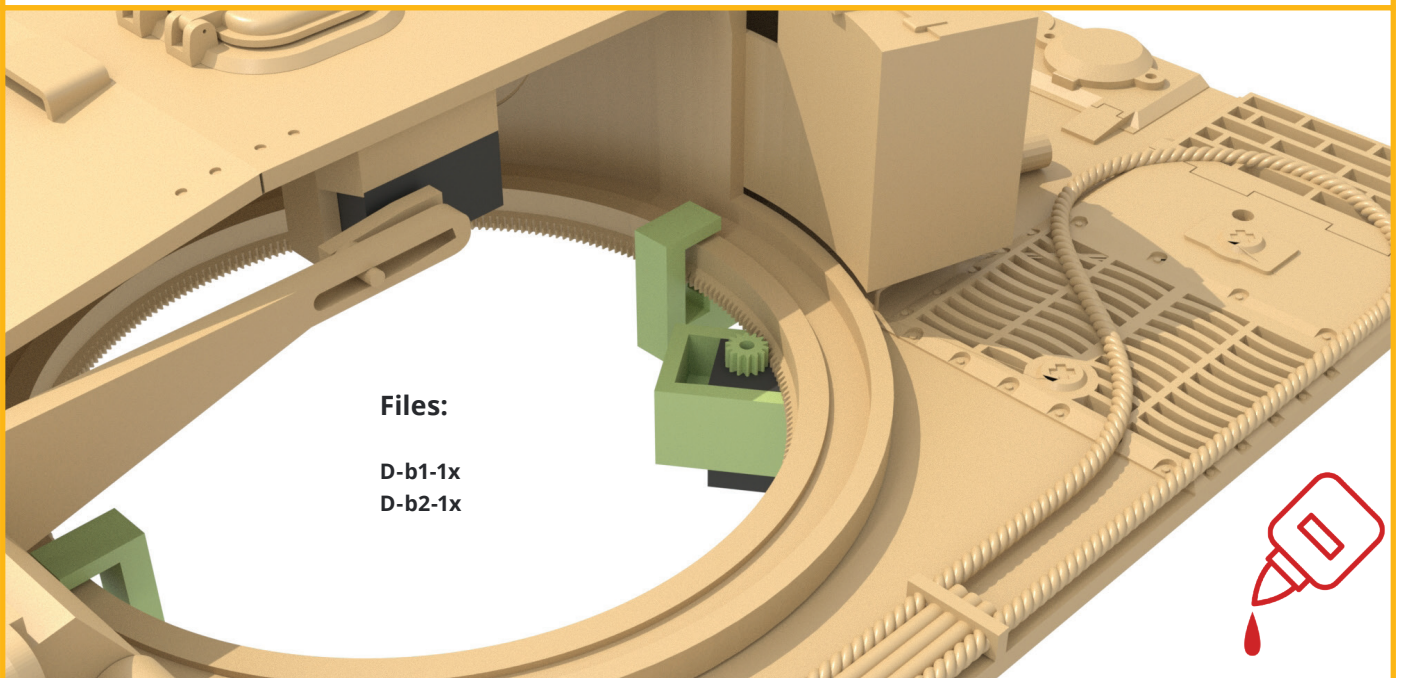
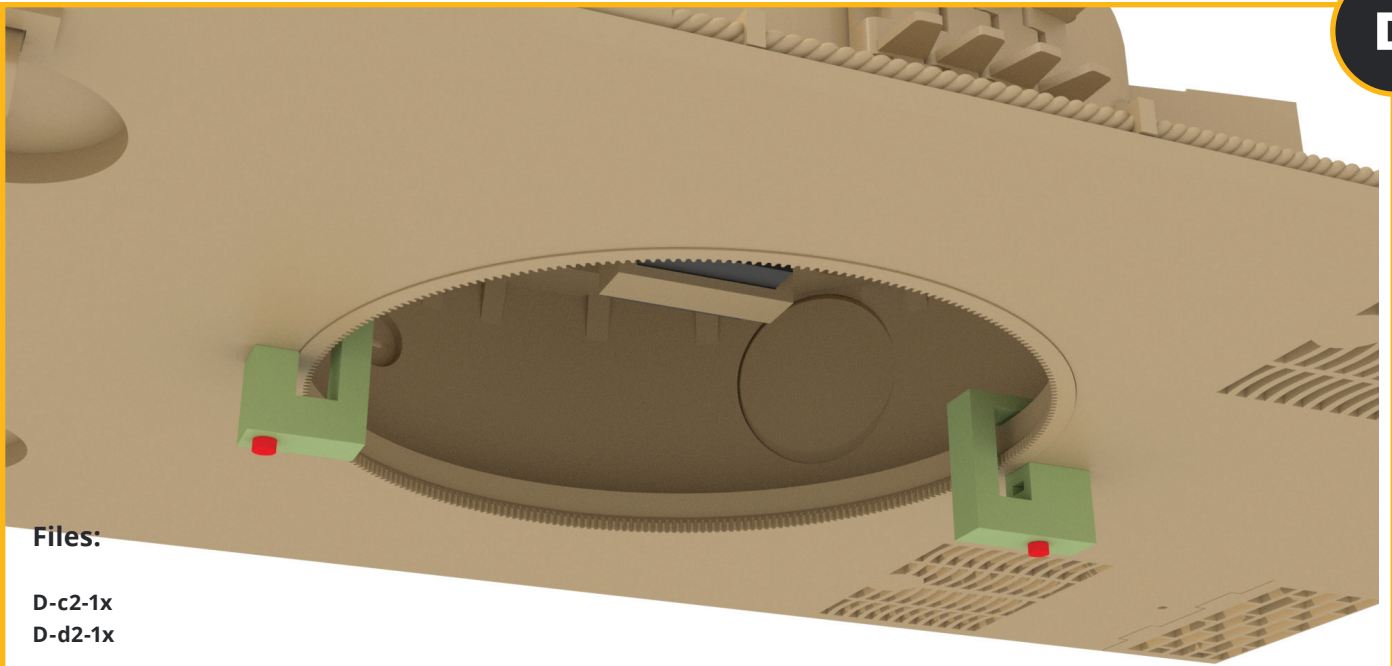
Files:

- D-a1-1x
- D-a2-1x
- D-a3-1x
- D-a4-1x



Files:

- D-c1-1x
- D-d1-1x







autor: **Petr Školař**
web: **www.3dtiks.store**
e-mail: **3dtisk@gpstudio.cz**