

VERZE 1.2.

2024



Sturmgeschutz III

StuG III Ausf.

1:10

F



NÁVOD KE STAVBĚ

www.3dtisk.store

Stavební manuál

3d tisk

Nastavení :

Nastavení tisku: **0.20mm** (u spojovacích dílů **0.15mm** přesnější např. vkládání kuličkových ložisek)

Výplň: **15%** (u pohyblivých částí **100%** např. převodovky)

Filament: **PLA 3 Kg**
Souborů STL: **223 ks**
Délka tisku: **9 dní**

UPDATE V-1.2.

kombinovaná převodovka, silnější hnací osa, jednodušší sestavení, vyměnitelné díly, nové napínání pásů

Spojovací materiál

Šrouby

M3 x 16mm = 66ks

M3 x 10mm = 8ks

Ložiska:

Kuličkové ložisko 10 x 15 x 4mm = 20ks

Kuličkové ložisko 12 x 21 x 5mm = 4ks

XL rozvodový pás

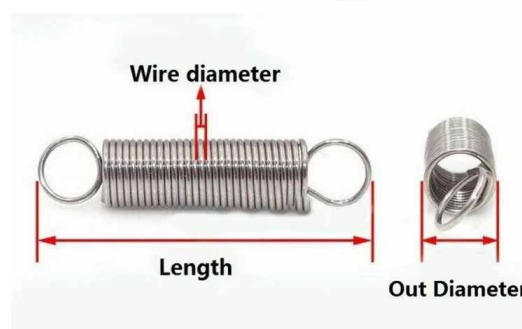
70, zubů: 35 = 4ks

Pružiny:

0,5 mm, 30 mm, 5 mm = 12ks

Drát vázací: tl. 1 mm

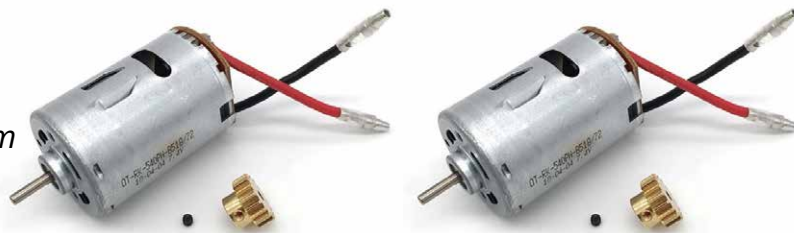
Sekundové lepodlo



Motory:

Stejnoseměrné motory 540

Rozměry (Ø x d) 35.8 mm x 50 mm



Regulátory:

obousměrný elektrický regulátor rychlosti, pro stejnosměrné motory.

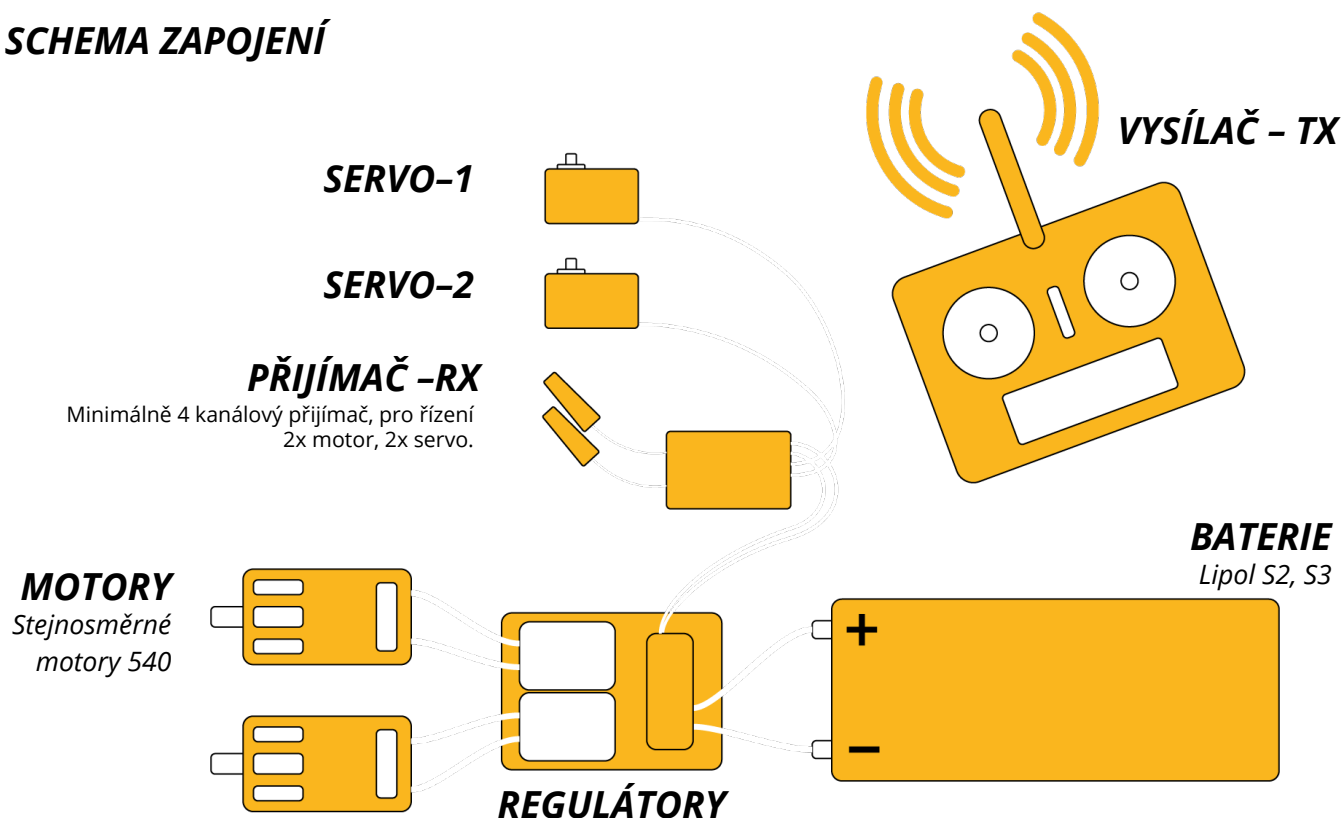


Serva:

20,3x38x40,5mm



SCHEMA ZAPOJENÍ



Sturmgeschutz III

StuG III - F

PARAMETRY MODELU

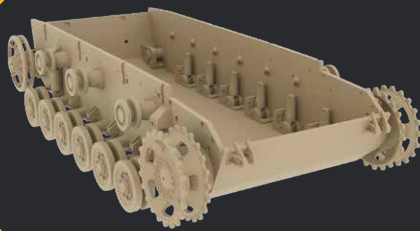
Měřítko: 1:10

Rozměr: 706 x 344 x 260 mm

Váha: 4,5 Kg



A



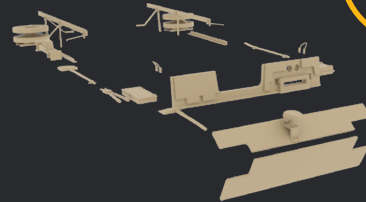
E



B



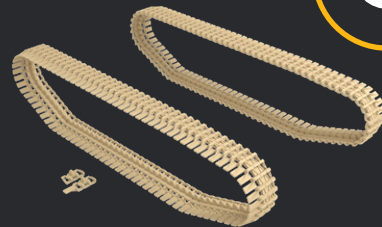
F



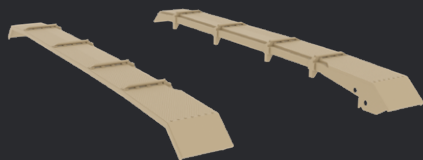
C



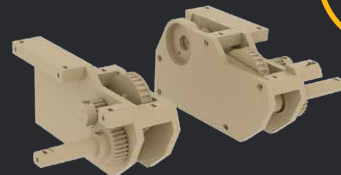
G



D

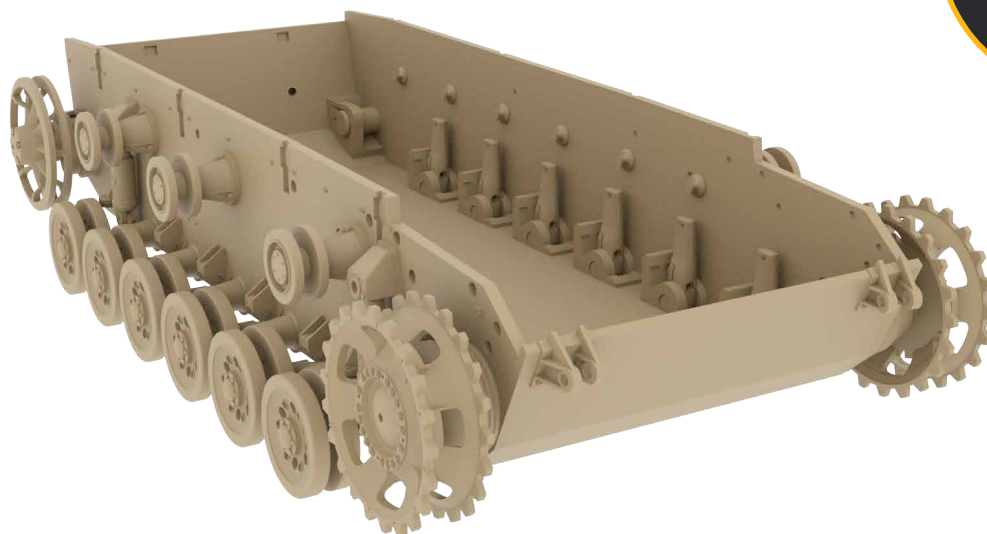


P



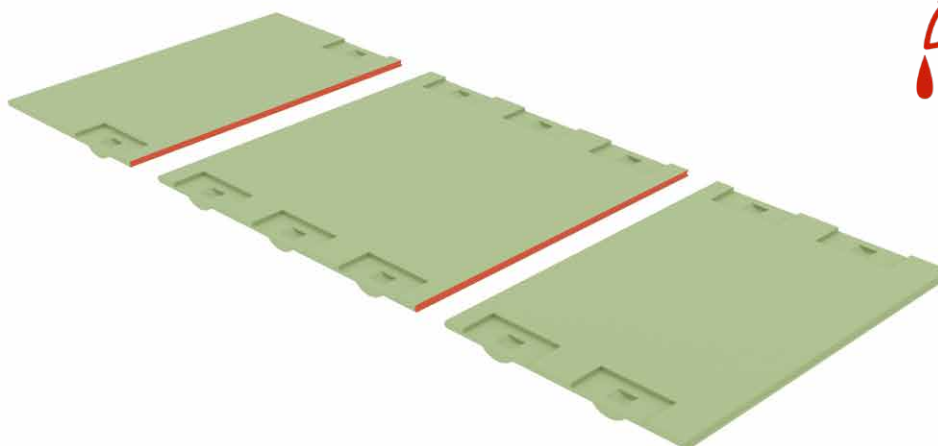
StuG III

A



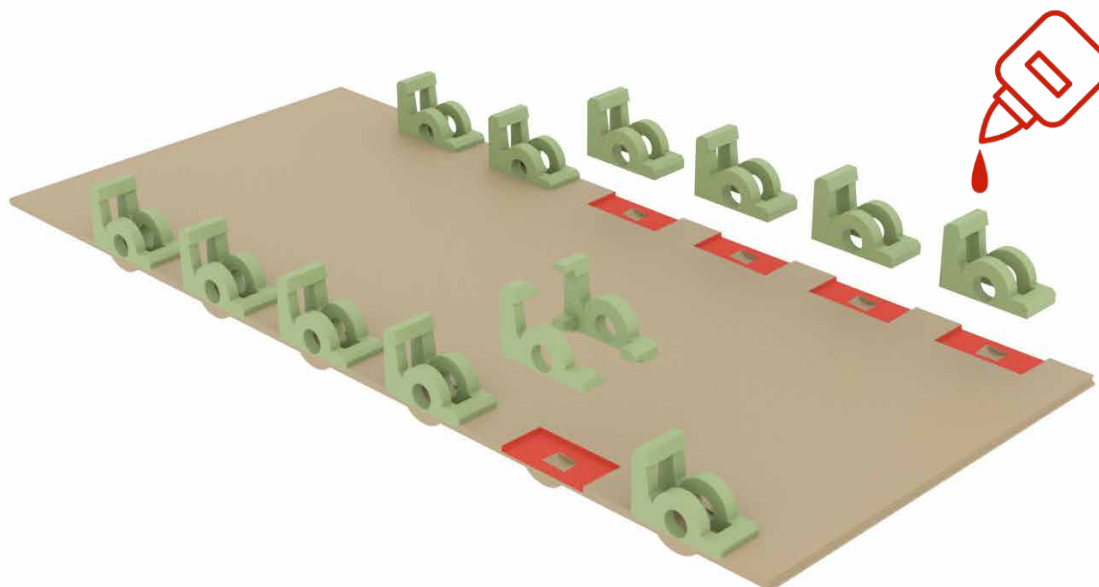
Soubory:

- A-1-1x
- A-2-1x
- A-3-1x



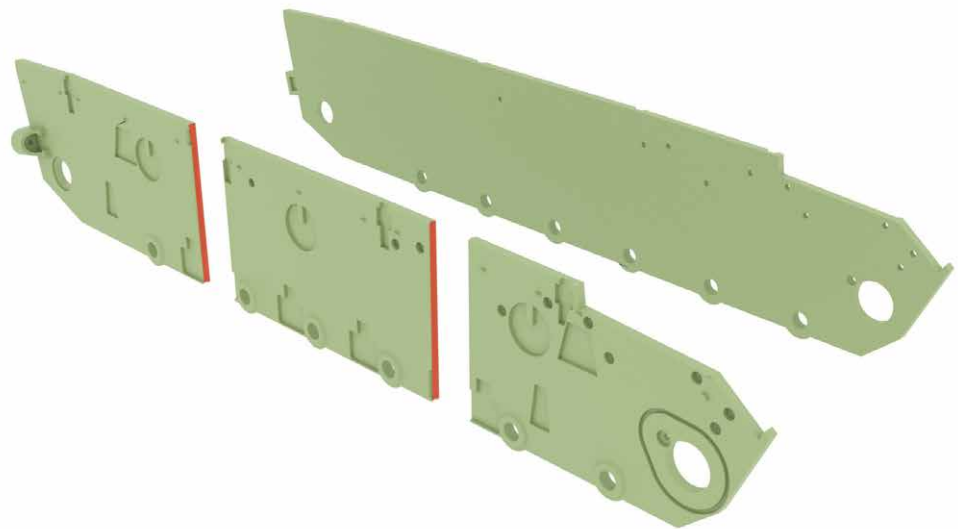
Soubory:

- A-4-right-6x
- A-4-left-6x
- A-5-right-6x
- A-5-left-6x



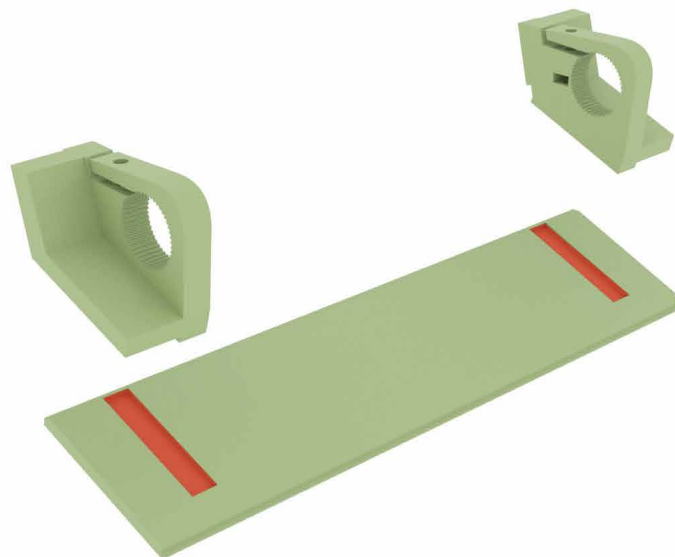
Soubory:

- A-6-right-1x
- A-6-left-1x
- A-7-right-1x
- A-7-left-1x
- A-8-right-1x
- A-8-left-1x



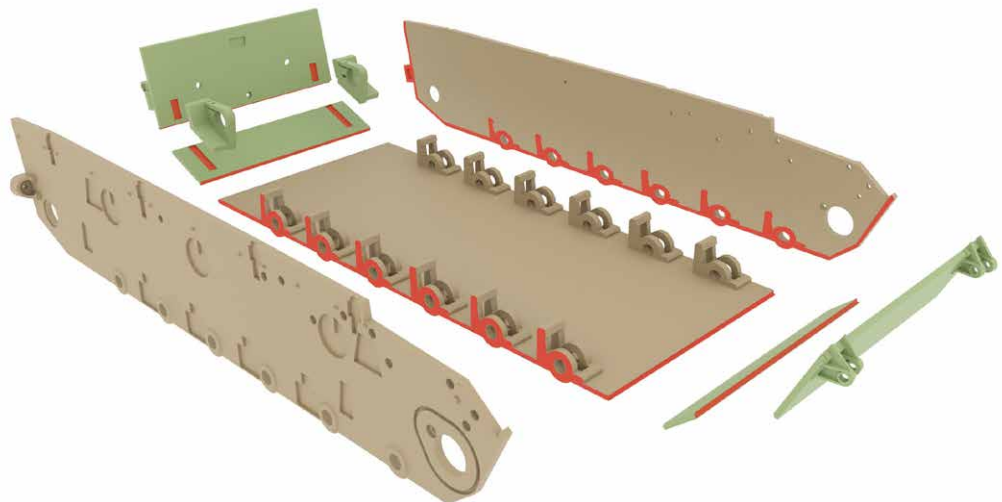
Soubory:

- A-11-1x
- A-12-left-1x
- A-12-right-1x

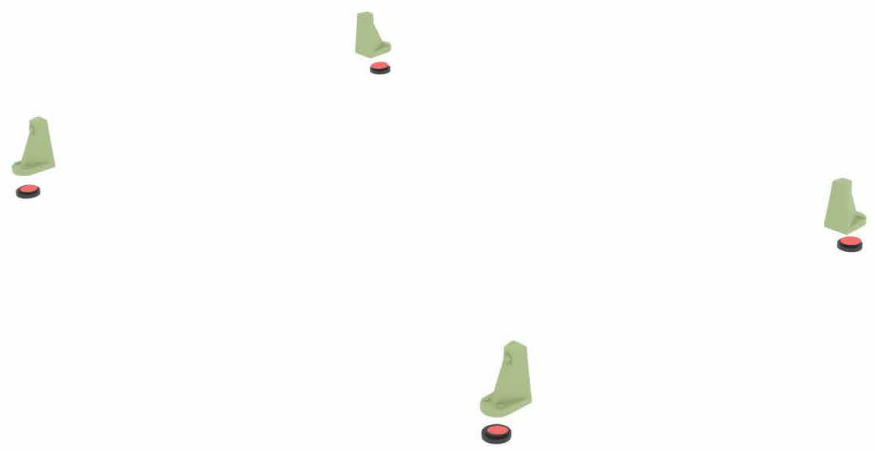


Soubory:

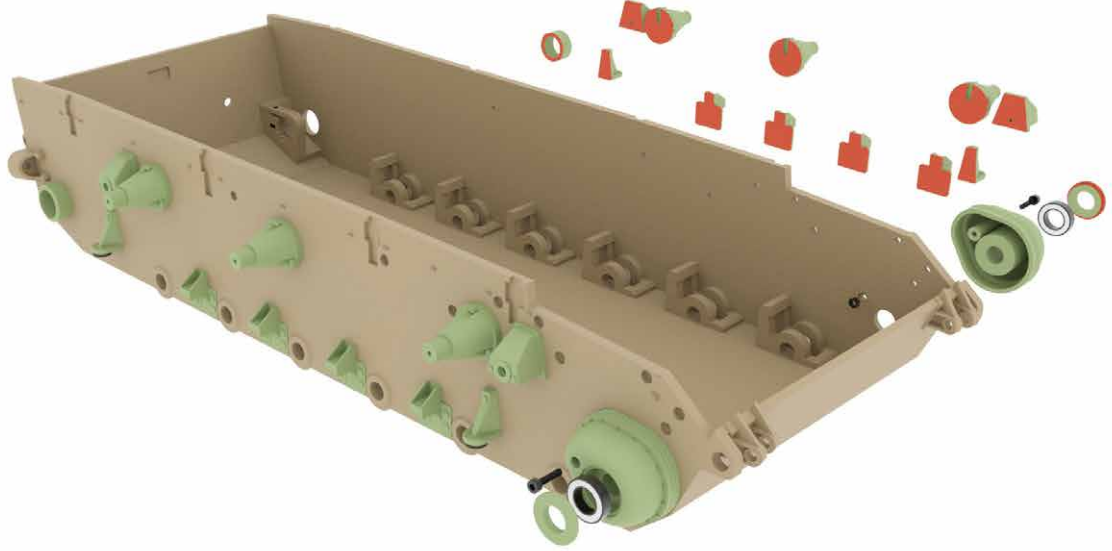
- A-9-1x
- A-10-1x
- A-11-1x
- A-12-left-1x
- A-12-right-1x
- A-13-1x



Soubory:
A-14-4x
A-15-FLEX-4x

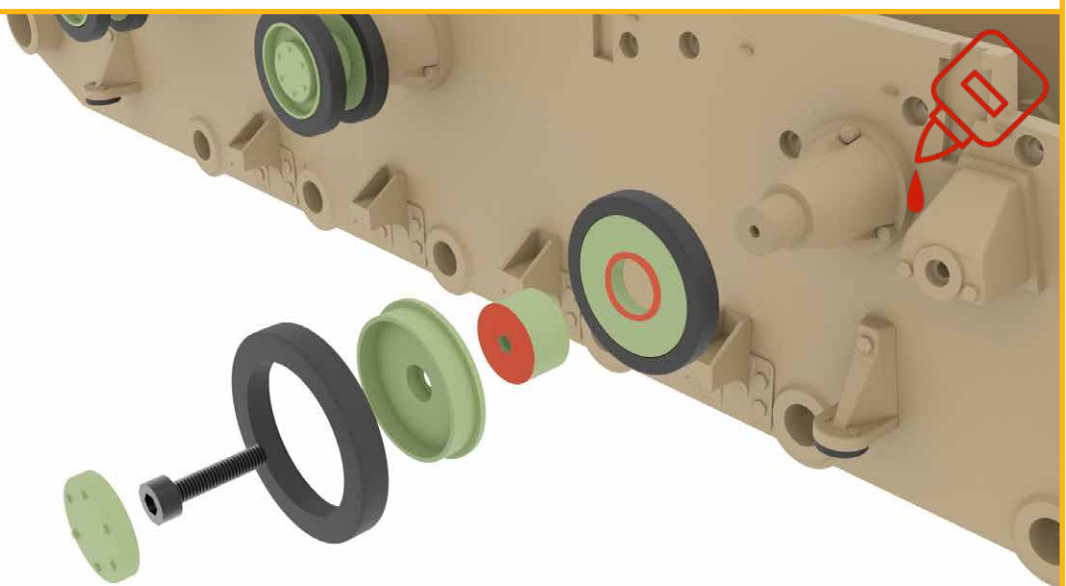


Soubory:
A-14-4x
A-15-FLEX-4x
A-16-8x
A-17-6x
A-18-4x
A-19-right-1x
A-19-left-1x
A-19-2-2x
A-20-2x



Soubory:
A-21-6x
A-22-6x
A-23-6x
A-24-6x
A-24-FLEX-12x

M3 16mm 12x

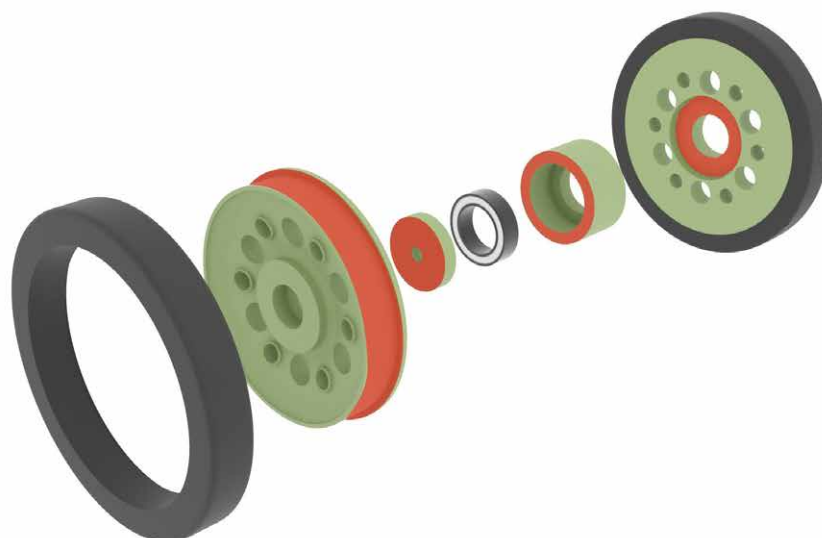


A

Soubory:

A-25-12x
A-26-12x
A-27-12x
A-28-12x
A-29-FLEX-12x

Ložiska
10x15x4 mm



Soubory:

(A-25-12x, A-26-12x, A-27-12x, A-28-12x, A-29-FLEX-12x)

A-30-12x
A-31-right-2x
A-31-left-2x
A-32-right-4x
A-32-left-4x
A-32-12x

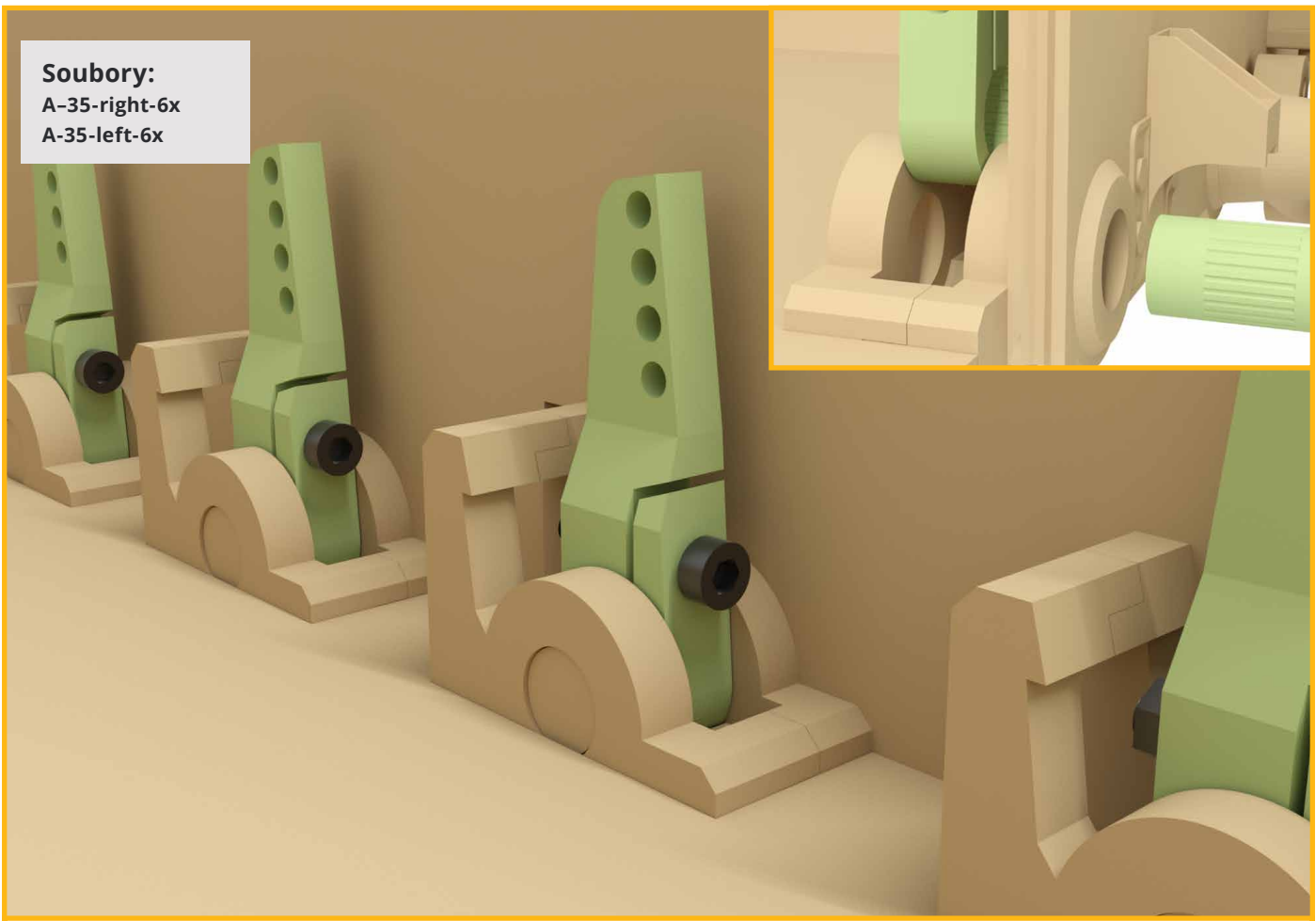


Soubory:

A-33-4x
A-34-4x



Soubory:
A-35-right-6x
A-35-left-6x

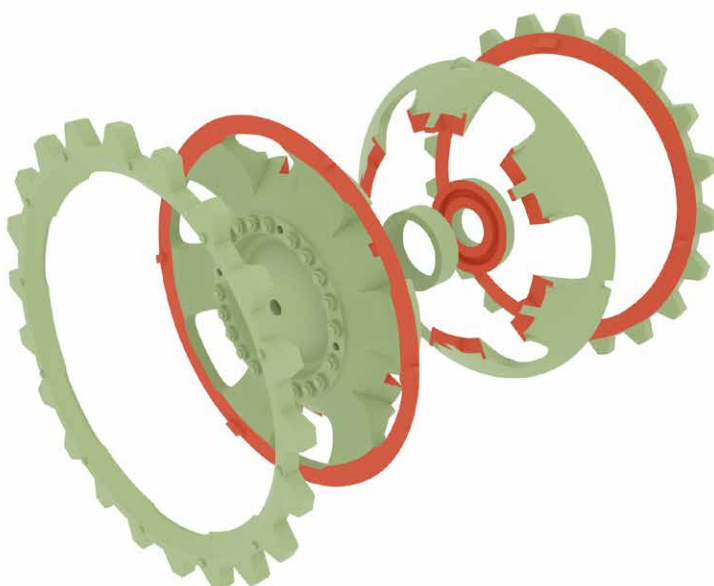


Soubory:
A-36-12x
Pružiny



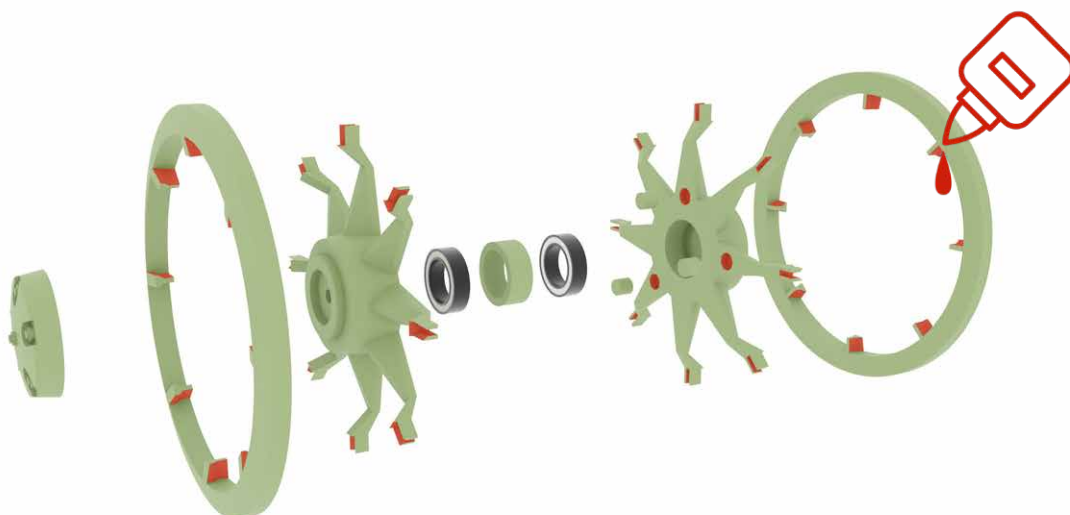
Soubory:

A-37-2x
 A-38-2x
 A-39-2x
 A-40-2x
 A-41-2x
 A-42-2x

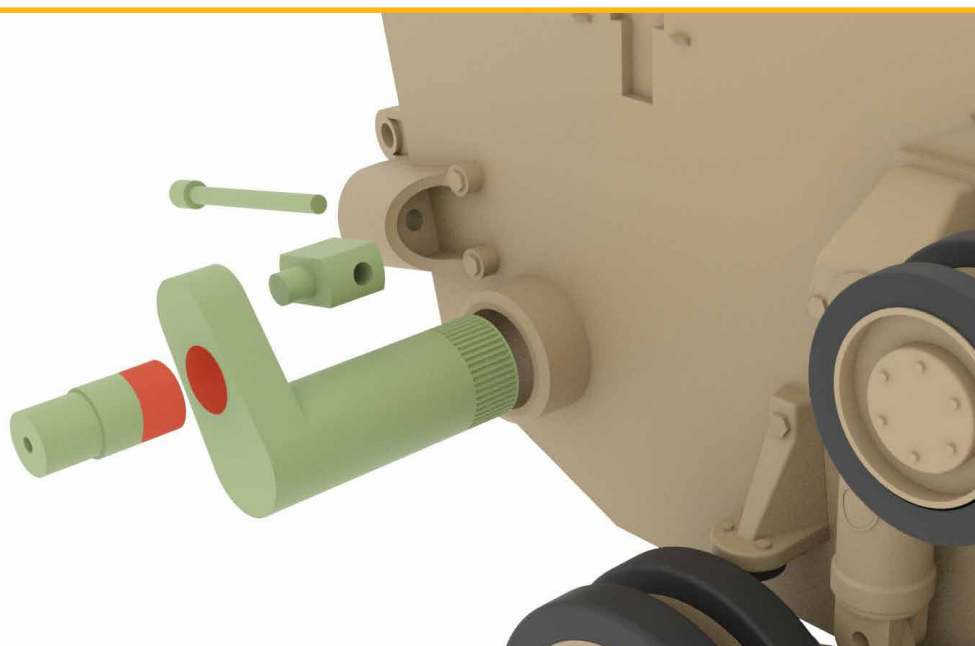
**Soubory:**

A-43-2x
 A-44-4x
 A-45-2x
 A-46-2x
 A-47-6x

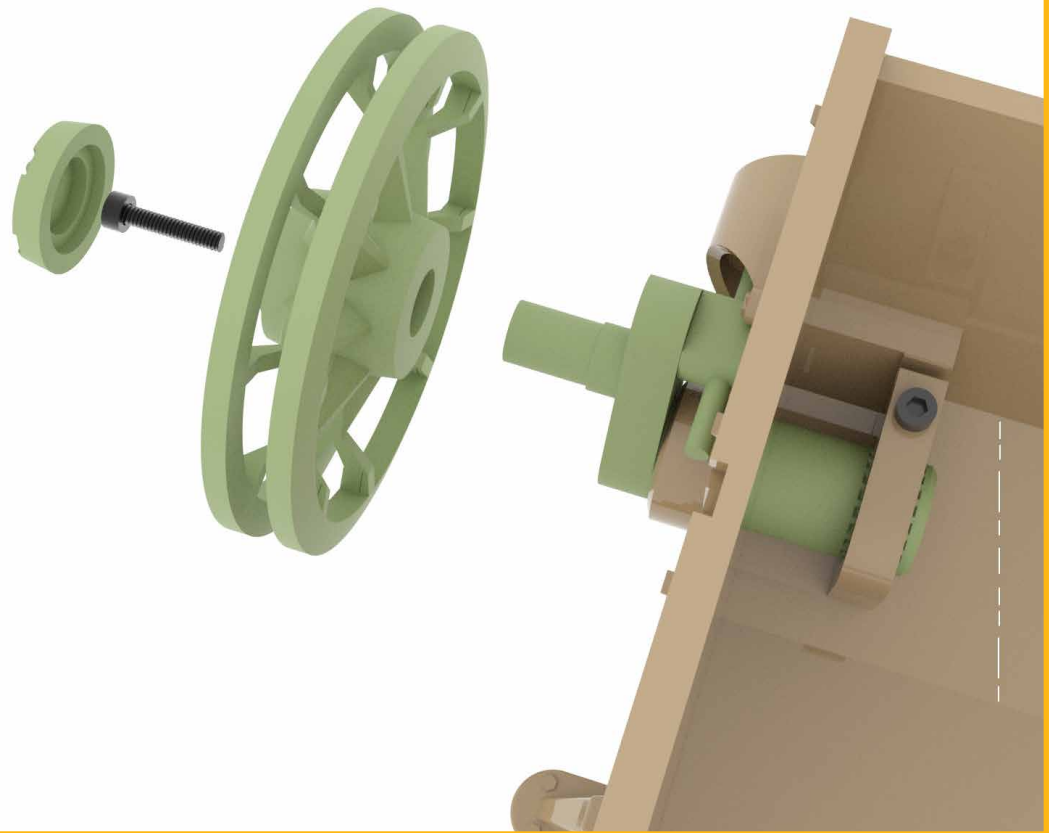
Ložiska
 10x15x4 mm

**Soubory:**

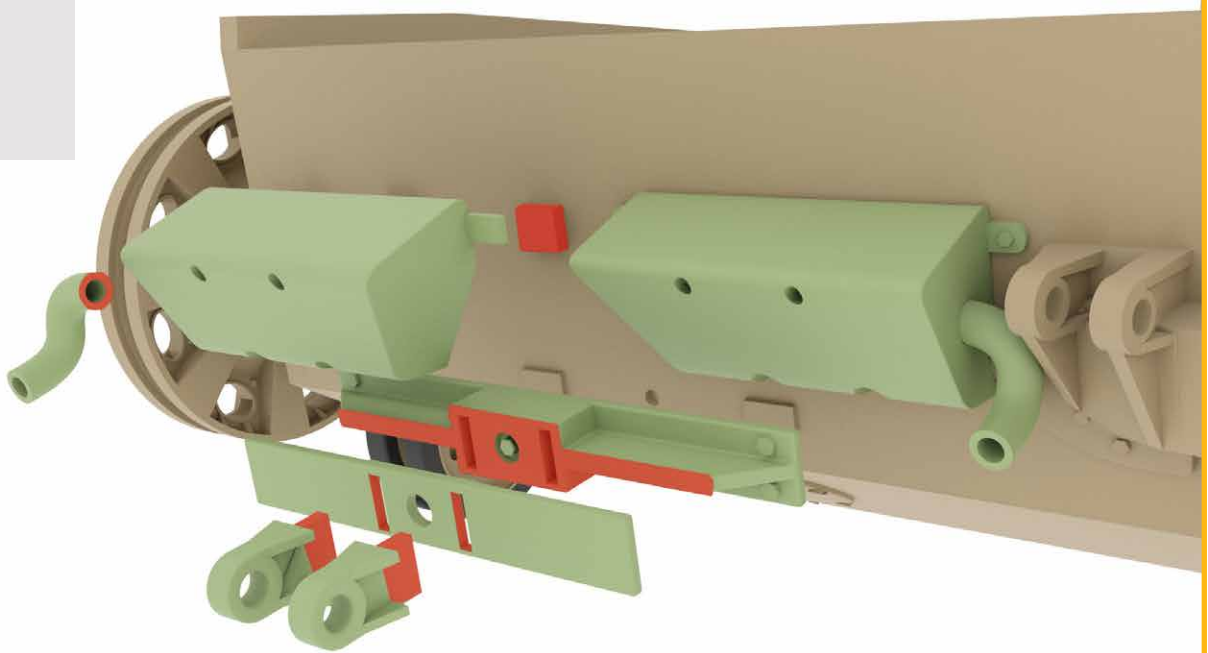
A-49-2x
 A-50-left-1x
 A-50-right-1x
 A-51-2x
 A-52-2x

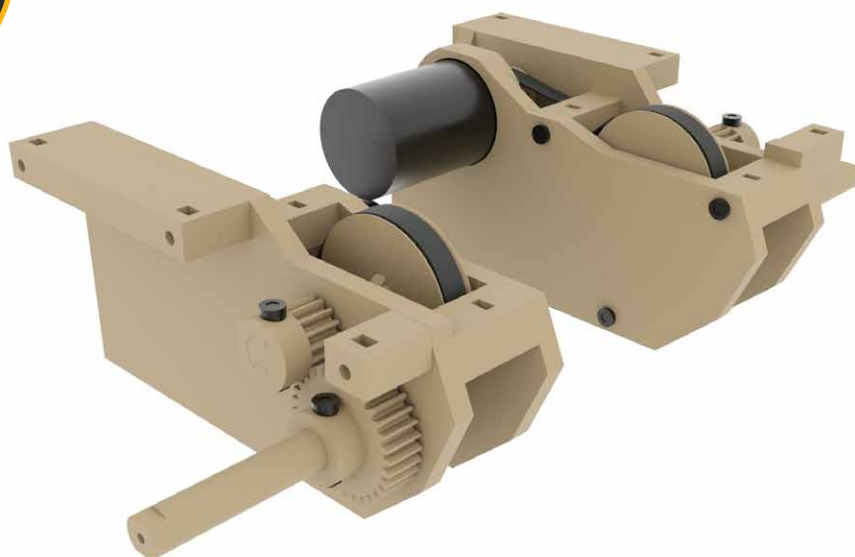


Soubory:
A-48-2x



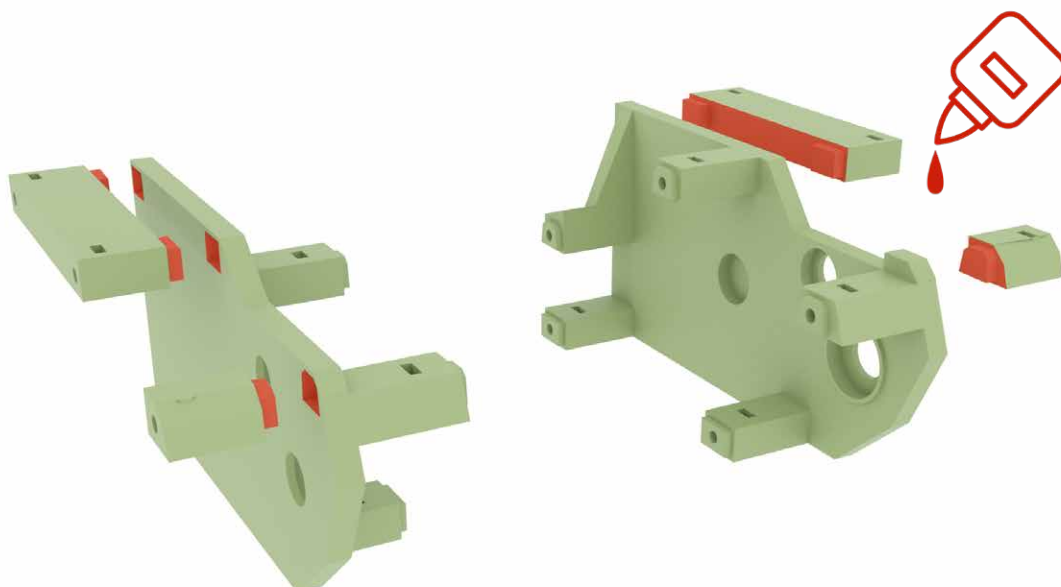
Soubory:
A-53-left-1x
A-53-right-1x
A-54-left-1x
A-54-right-1x
A-55-1x
A-56-1x
A-57-1x





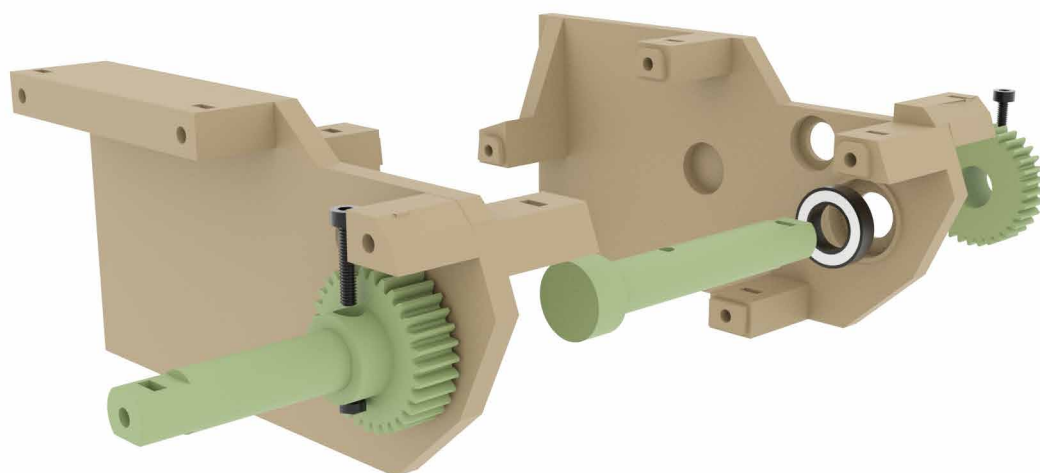
Soubory:

- P-1-right-1x
- P-1-left-1x
- P-2-right-1x
- P-2-left-1x
- P-3-right-1x
- P-3-left-1x



Soubory:

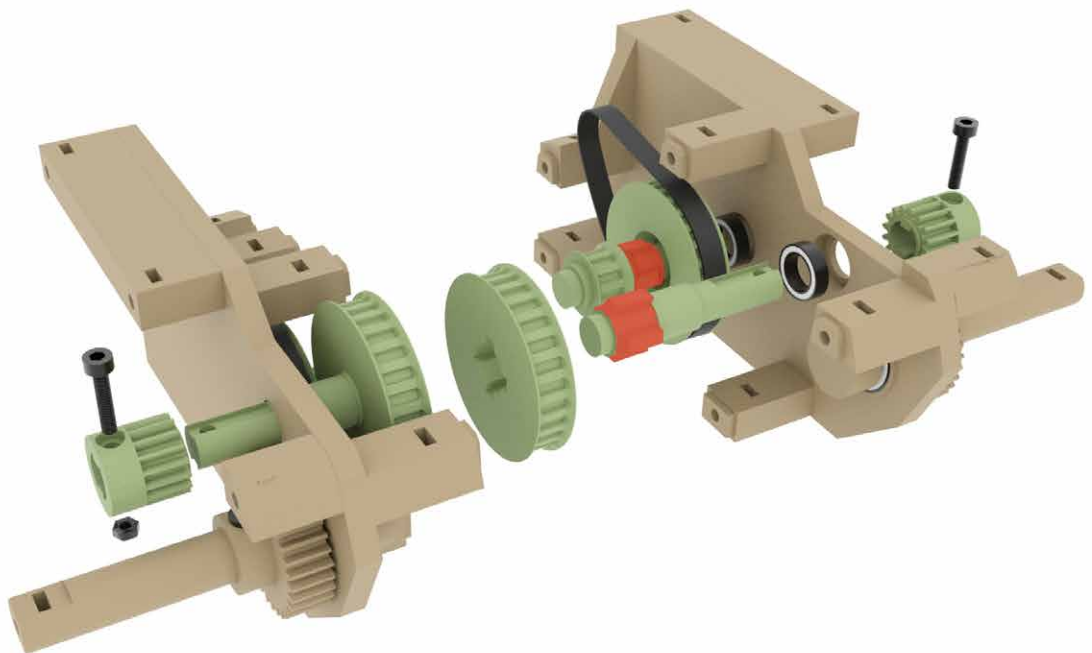
- P-4-2x
- P-5-2x
- M3 16mm 2x
- Ložisko-
12x21x5mm-2x



Files:

- P-6-2x
- P-7-2x
- P-8-2x
- P-9-2x
- P-10-2x

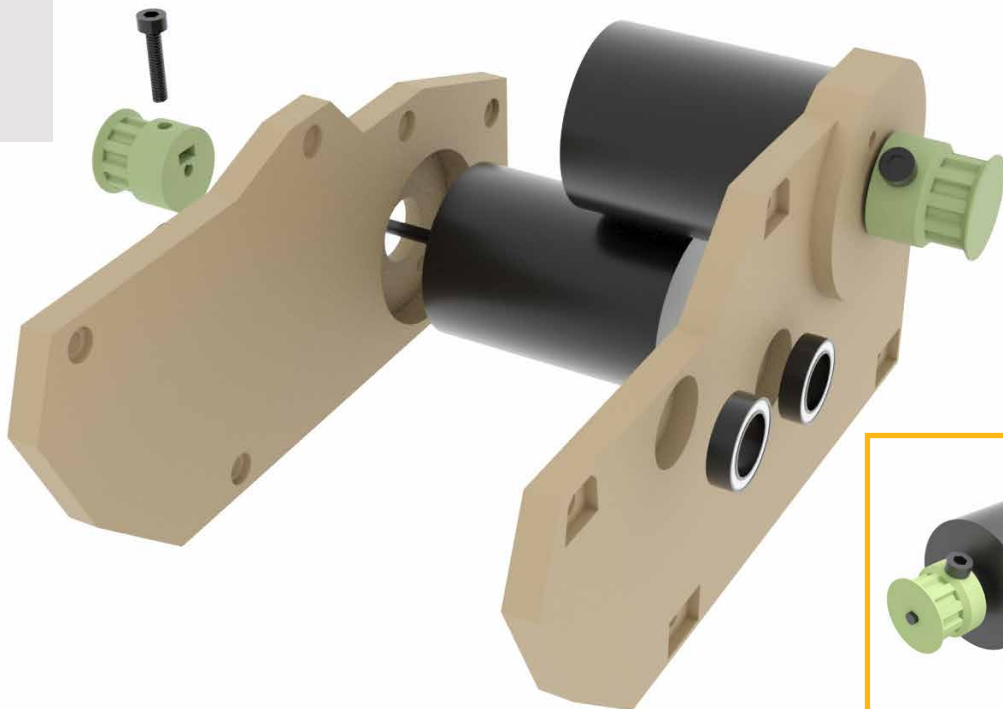
- Bearings-
10x15x4mm-4x
- M3 16mm 2x



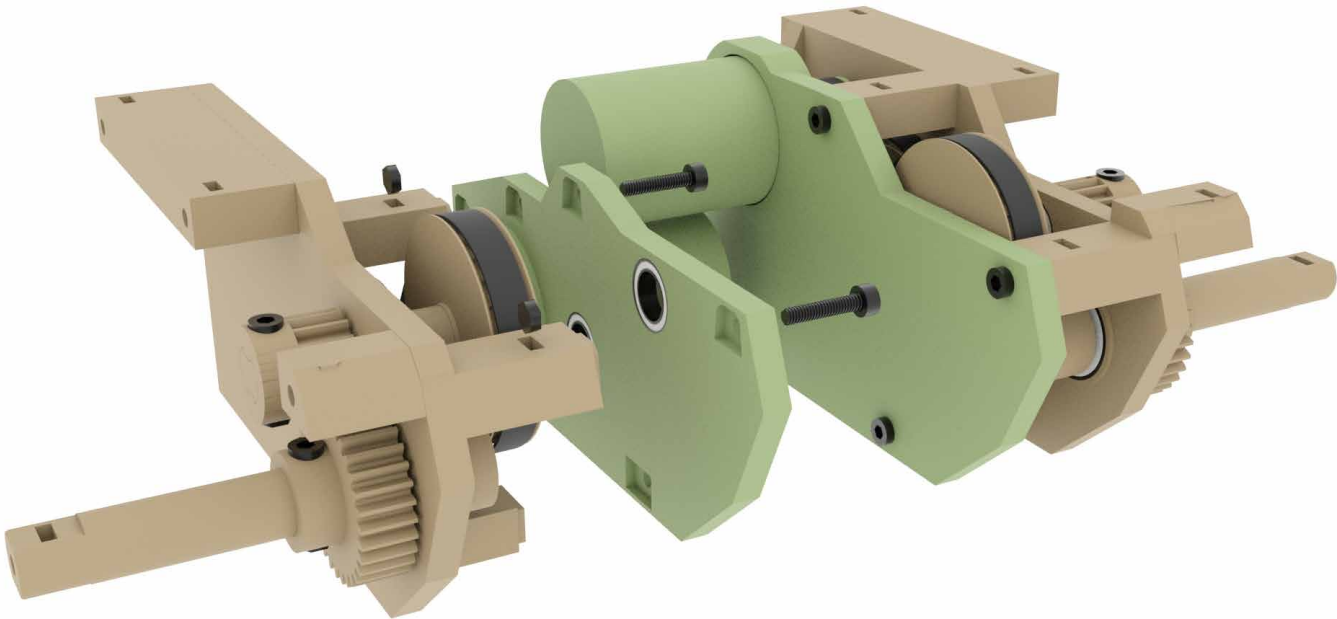
Files:

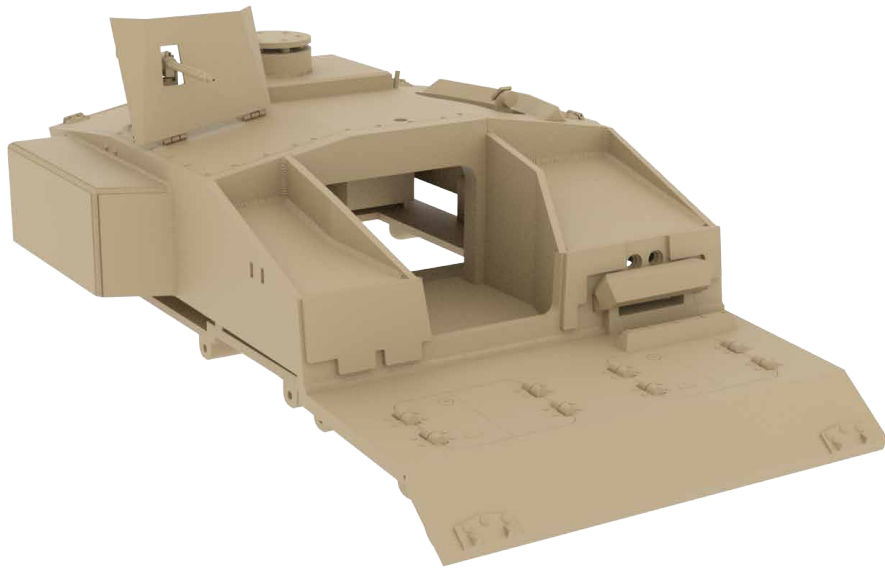
- P-11-2x
- P-12-right-1x
- P-12-left-1x

- M3 16mm 2x
- Bearings
10x15x4mm-4x



Files:
M3 16mm 12x

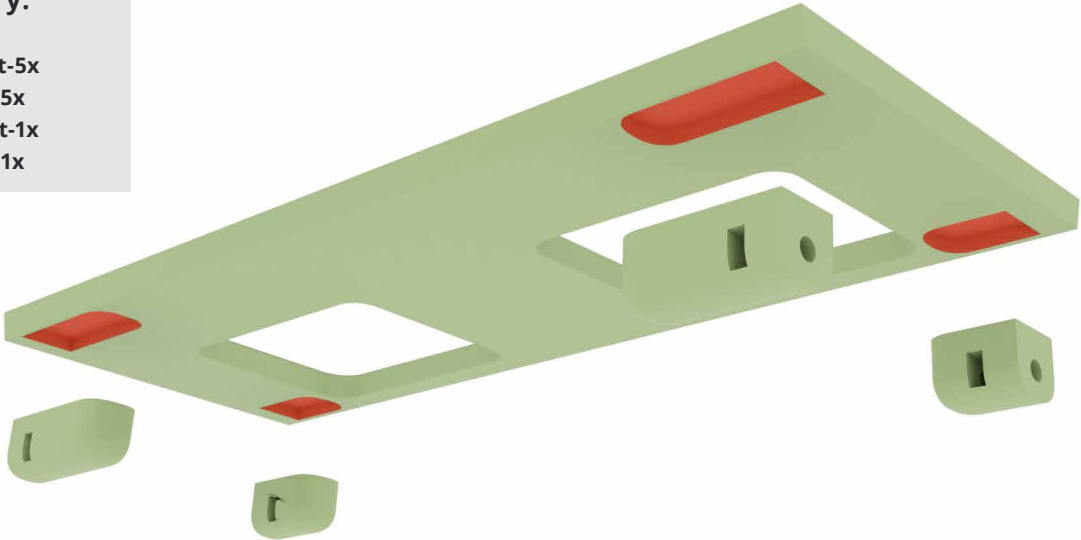




Soubory:
B-1-1x
B-3-right-5x
B-3-left-5x



Soubory:
B-2-1x
B-3-right-5x
B-3-left-5x
B-4-right-1x
B-4-left-1x



B

Soubory:

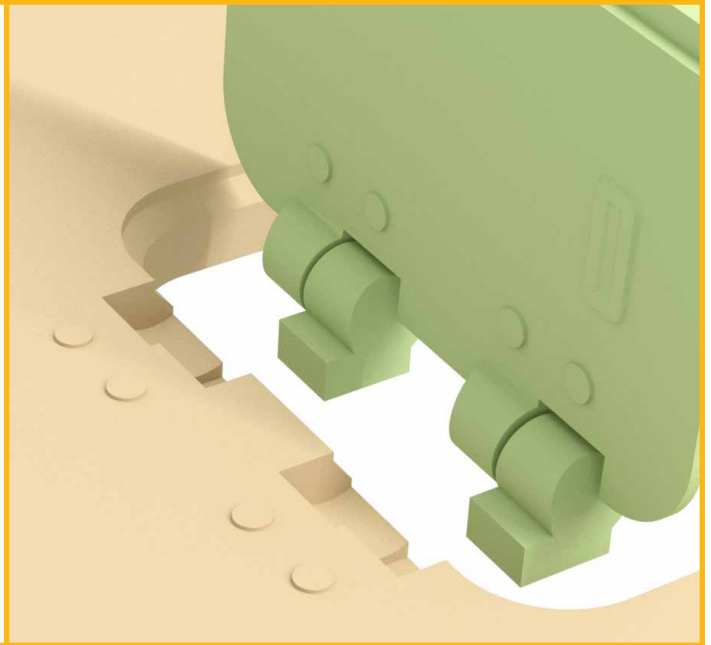
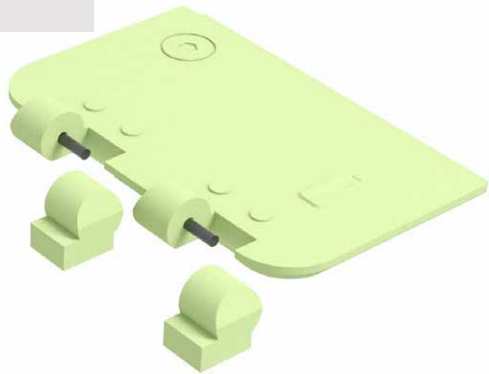
B-5-right-2x

B-5-left-2x

B-6-right-4x

B-6-left-4x

Wire 1mm



Soubory:

B-5-right-2x

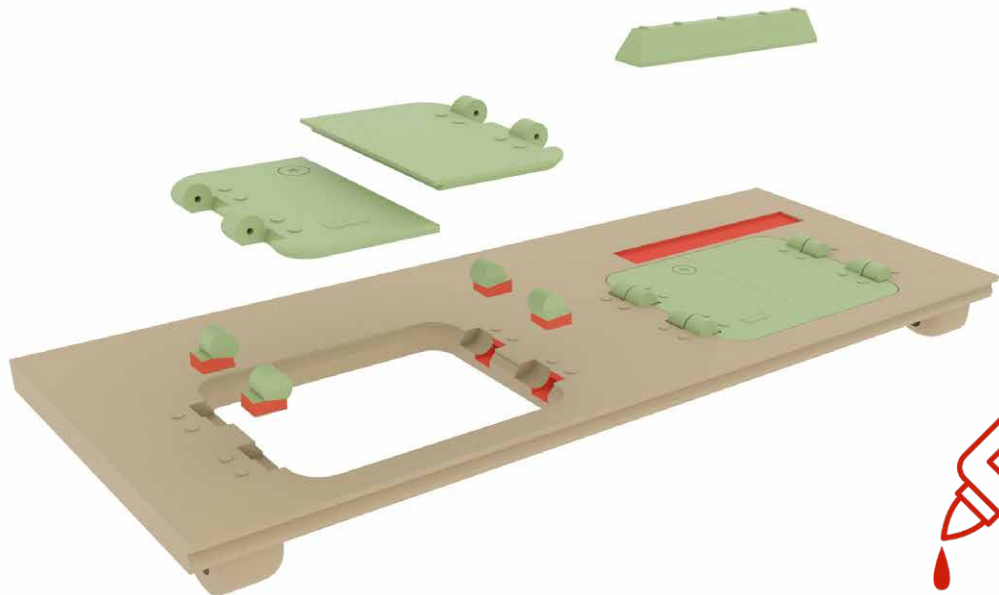
B-5-left-2x

B-6-right-4x

B-6-left-4x

B-7-1x

Wire 1mm



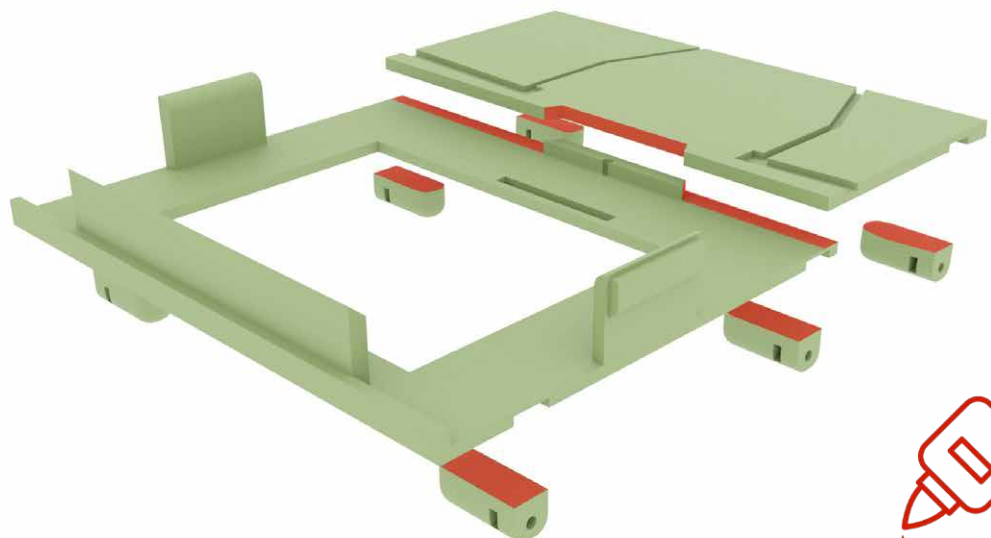
Soubory:

B-8-1x

B-9-1x

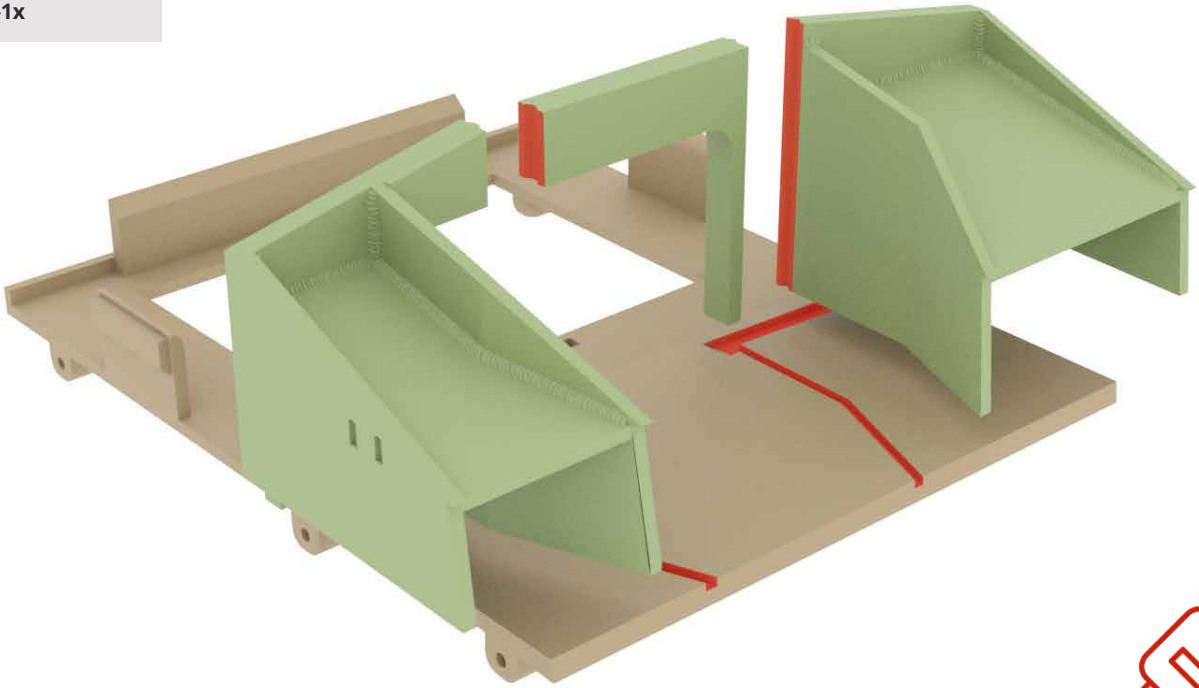
B-3-right-5x

B-3-left-5x



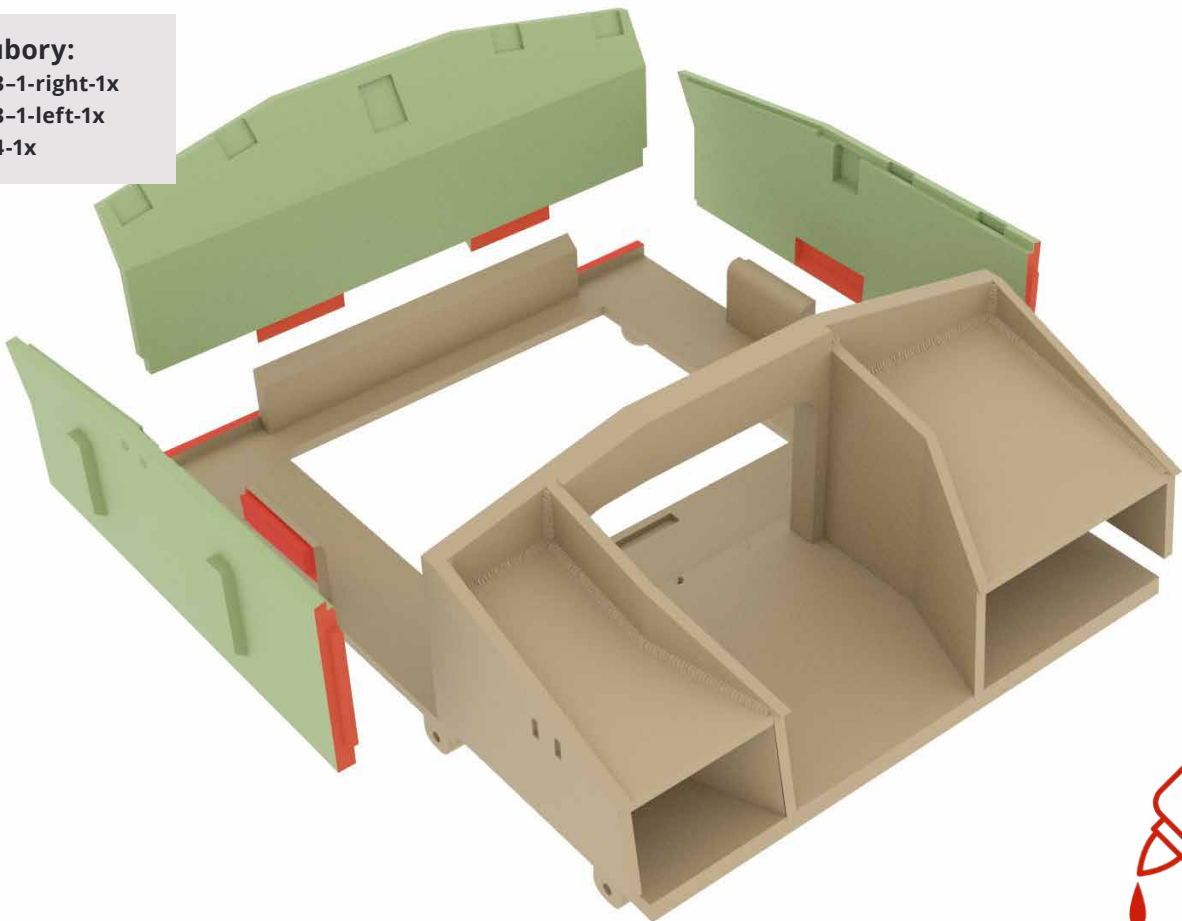
Soubory:

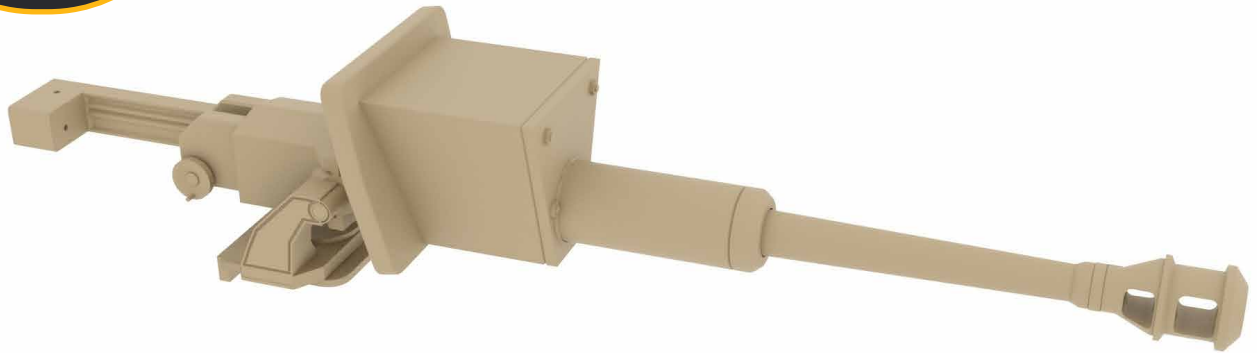
- B-10-1x
- B-11-1x
- B-12-1x



Soubory:

- B-13-1-right-1x
- B-13-1-left-1x
- B-14-1x





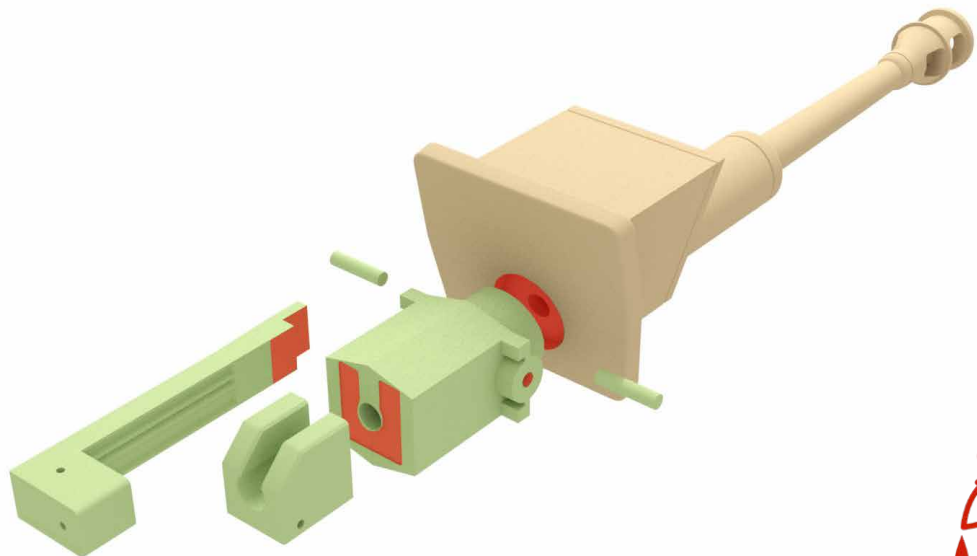
Soubory:

- C-1-1x
- C-2-1x
- C-3-1-1x
- C-3-2-1x

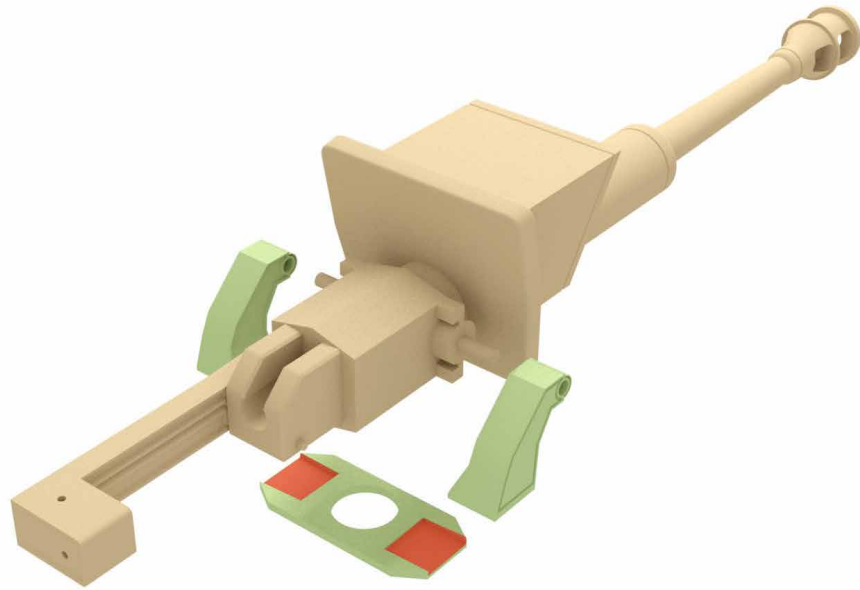


Soubory:

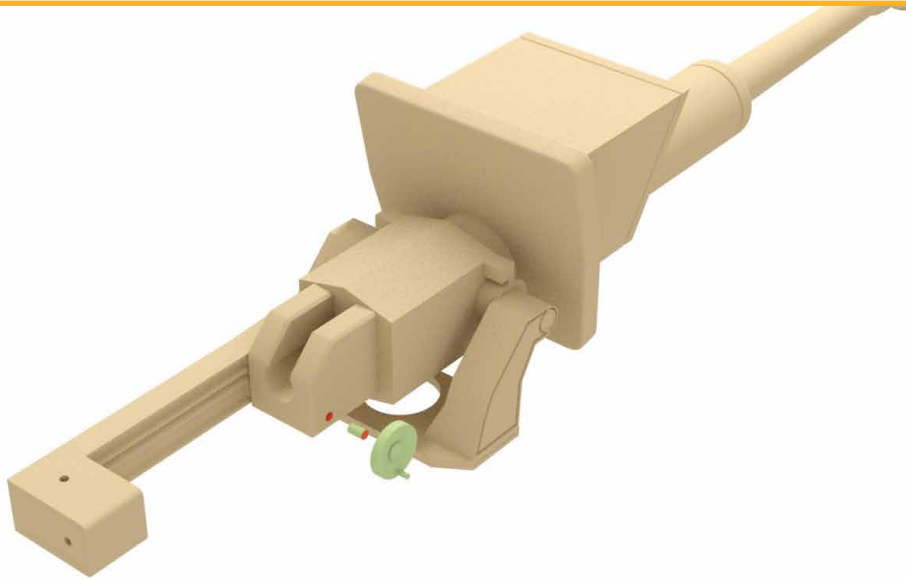
- C-4-1x
- C-5-1x
- C-6-1x
- C-7-2x



Soubory:
C-8-right-1x
C-8-left-1x
C-9-1x



Soubory:
C-10-1x
C-11-1x



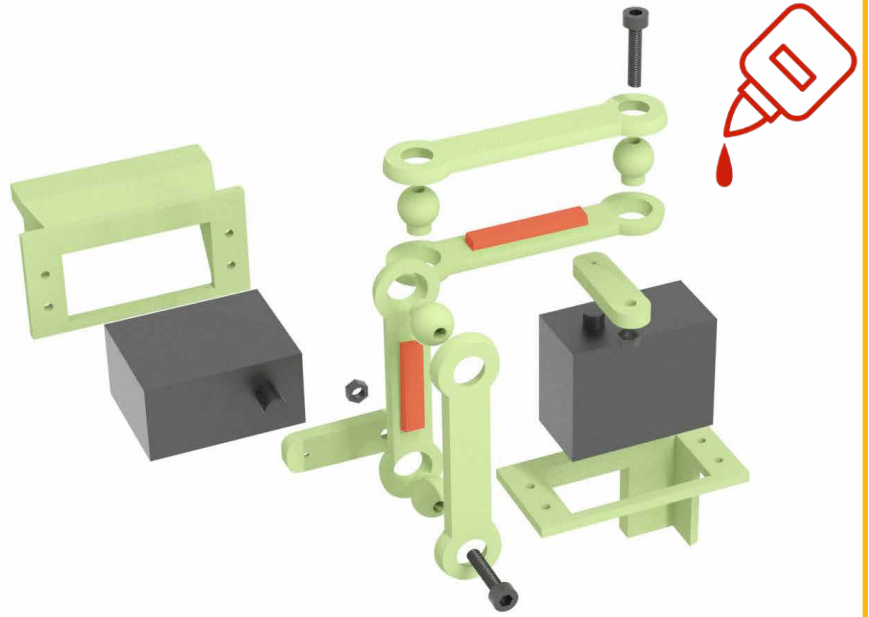
Soubory:
C-12-1x
C-13-1x
C-14-1x



B

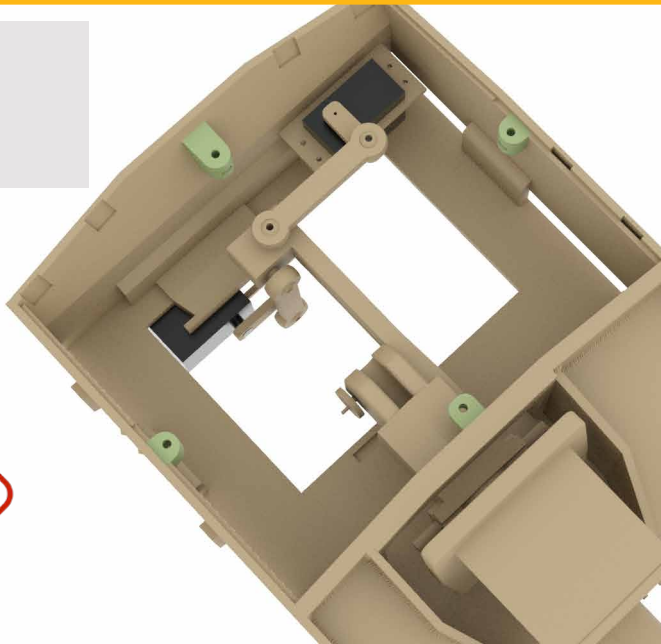
Soubory:

- B-15-1x
- B-16-1x
- B-17-2x
- B-18-4x
- B-19-1x
- B-20-1x
- B-21-1x
- B-22-1x



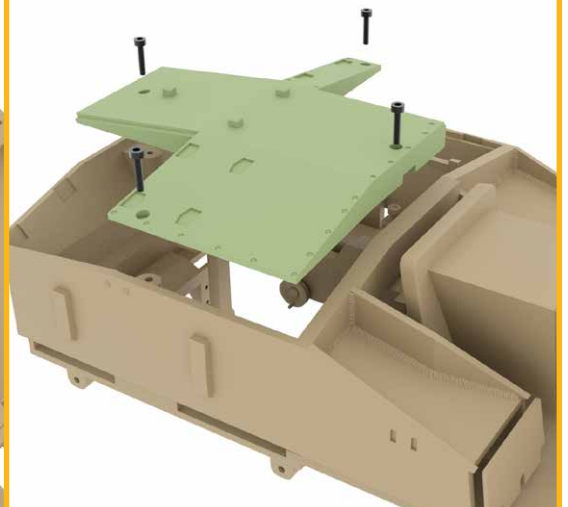
Soubory:

- B-23-2x
- B-24-1x
- B-25-1x



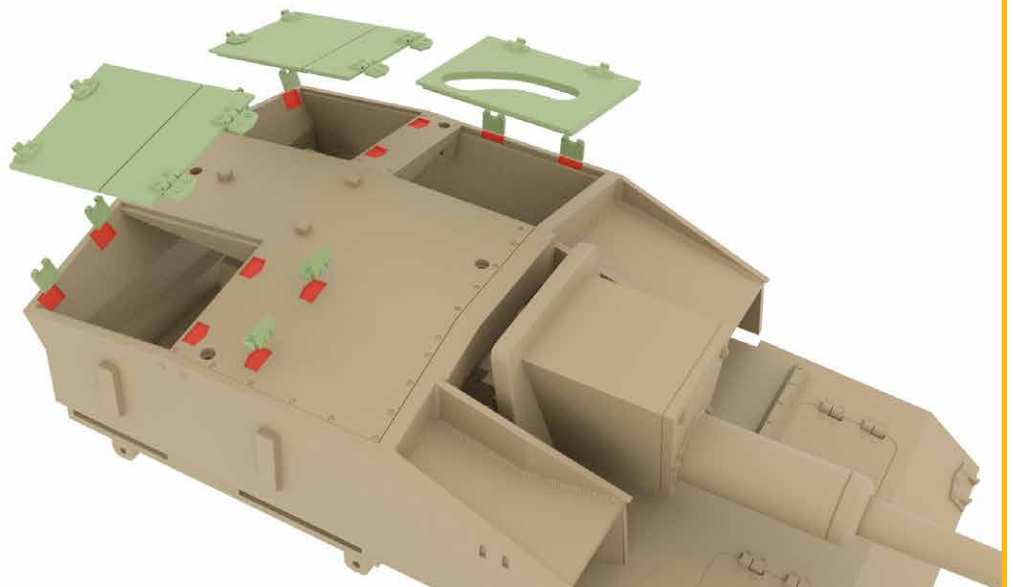
Soubory:

- B-26-1x



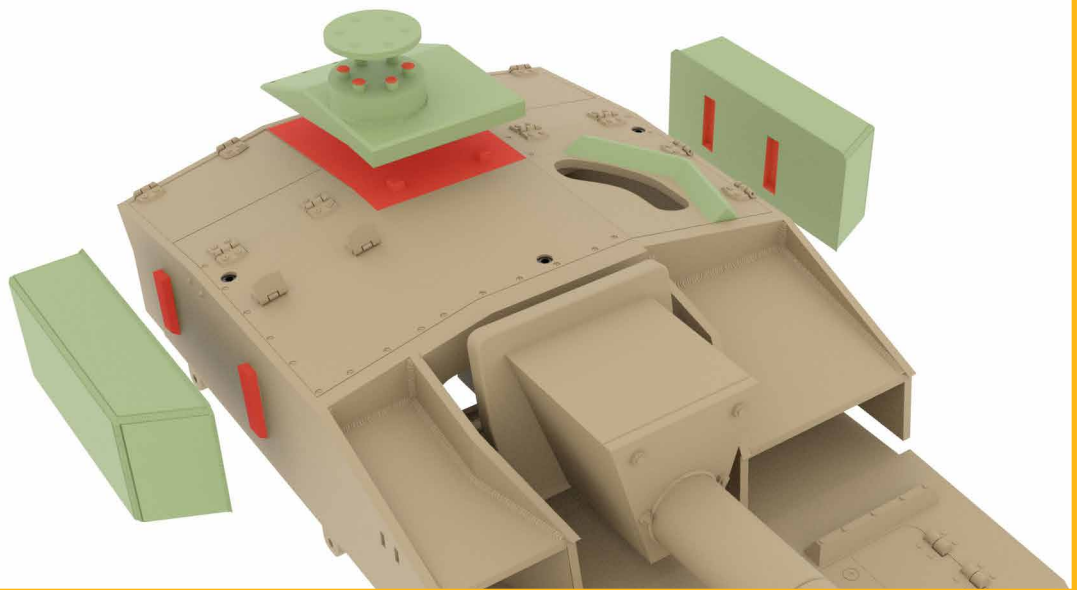
Soubory:

- B-27-6x
- B-28-12x
- B-29-6x
- B-29-2-6x
- B-30-right-1x
- B-30-left-1x
- B-31-right-1x
- B-31-left-1x
- B-32-1x



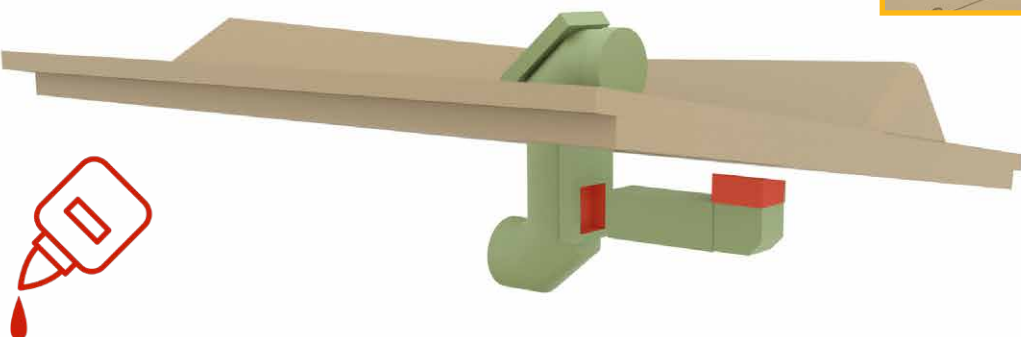
Soubory:

- B-33-1x
- B-34-1x
- B-34-1-1x
- B-34-2-1x
- B-35-1x
- B-36-left-1x
- B-36-right-1x



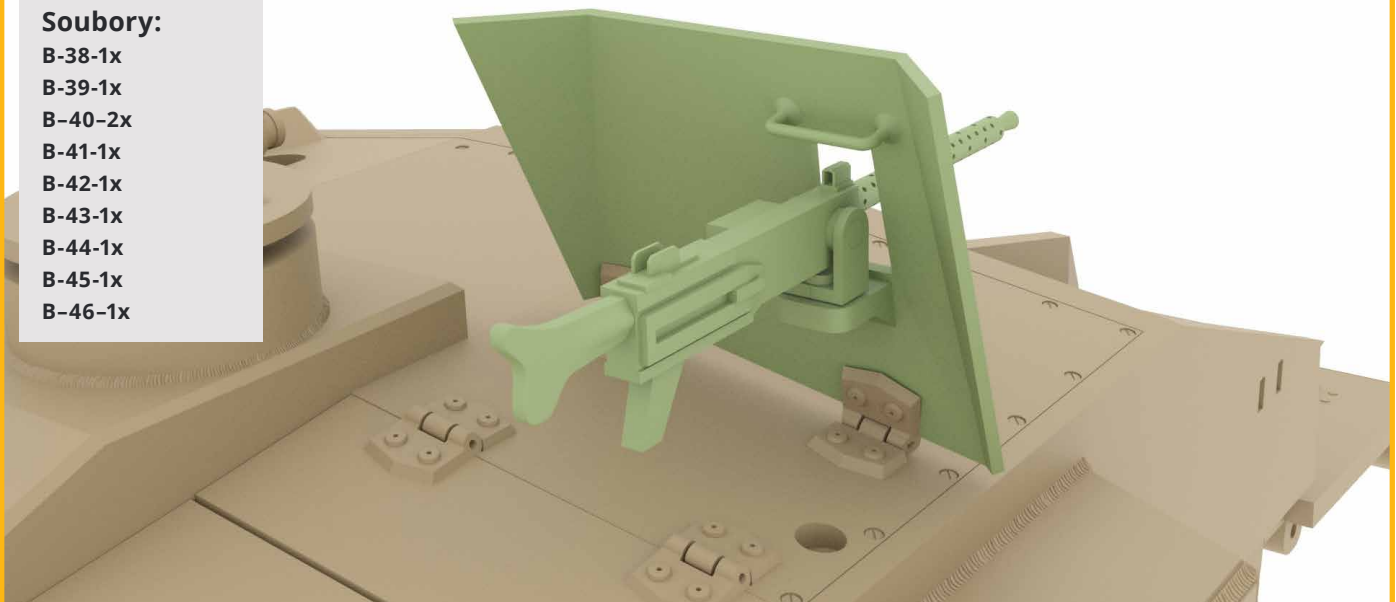
Soubory:

- B-36-1x
- B-37-1x



Soubory:

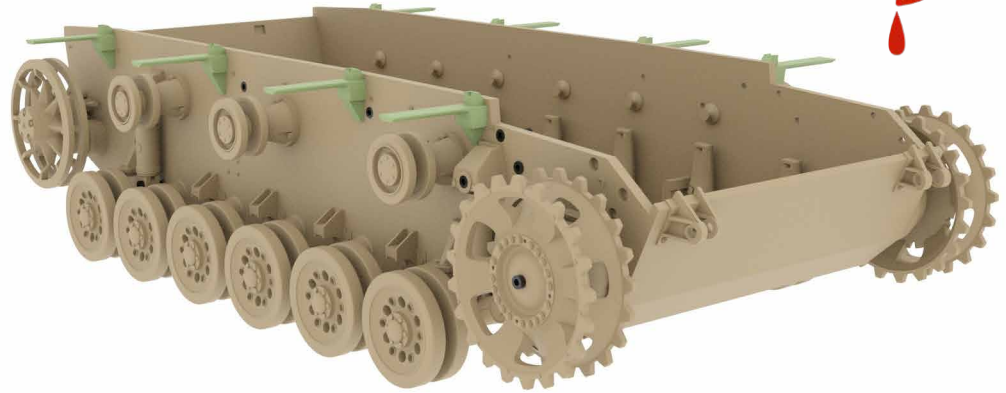
- B-38-1x
- B-39-1x
- B-40-2x
- B-41-1x
- B-42-1x
- B-43-1x
- B-44-1x
- B-45-1x
- B-46-1x



D

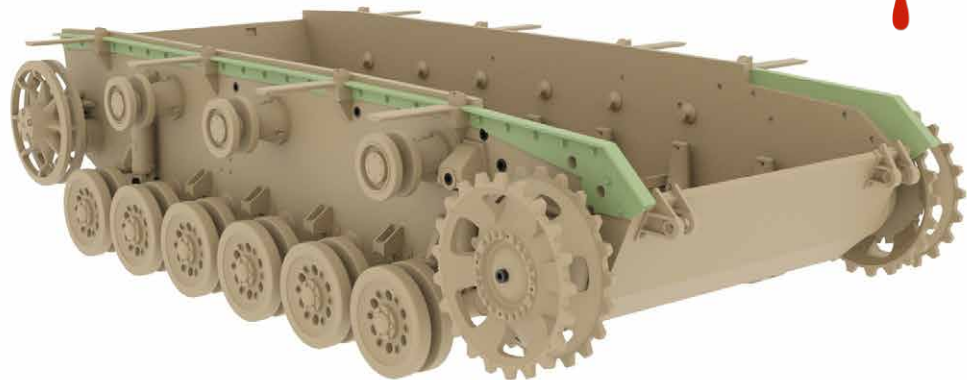
Soubory:

- D-1-right-1x
- D-1-left-1x
- D-2-right-1x
- D-2-left-1x
- D-3-right-1x
- D-3-left-1x
- D-4-right-1x
- D-4-left-1x



Soubory:

- D-5-right-1x
- D-5-left-1x
- D-6-right-1x
- D-6-left-1x
- D-7-right-1x
- D-7-left-1x
- D-8-right-1x
- D-8-left-1x
- D-9-right-1x
- D-9-left-1x

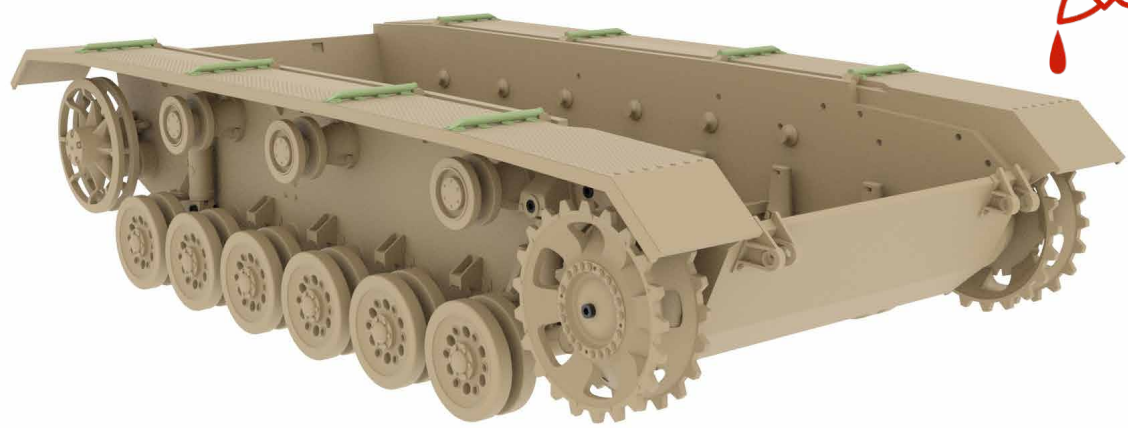


Soubory:

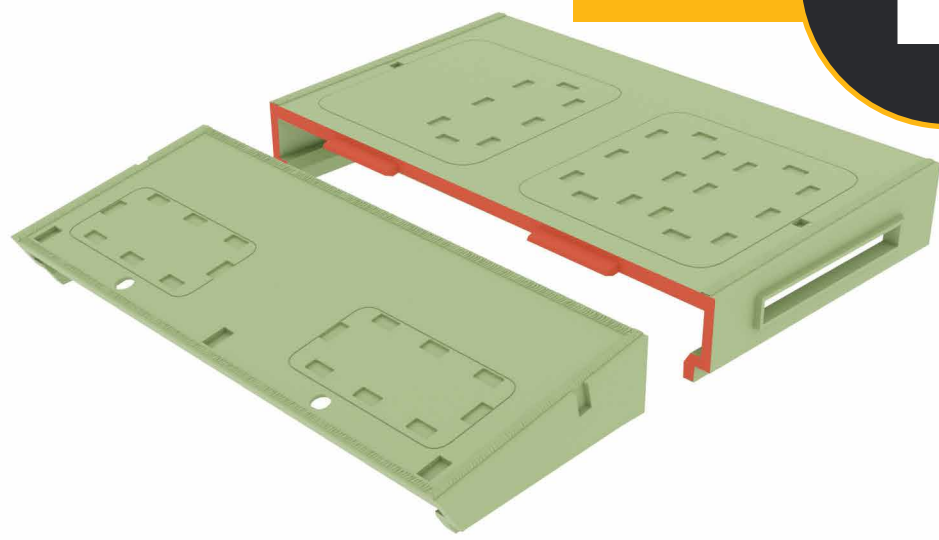
- D-10-right-1x
- D-10-left-1x
- D-11-right-1x
- D-11-left-1x
- D-12-right-1x
- D-12-left-1x



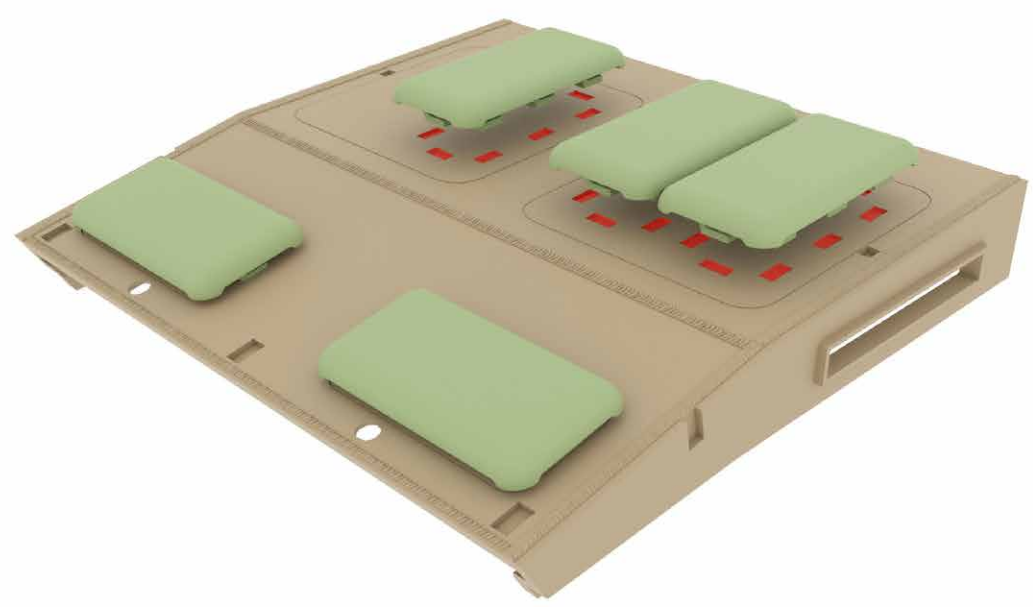
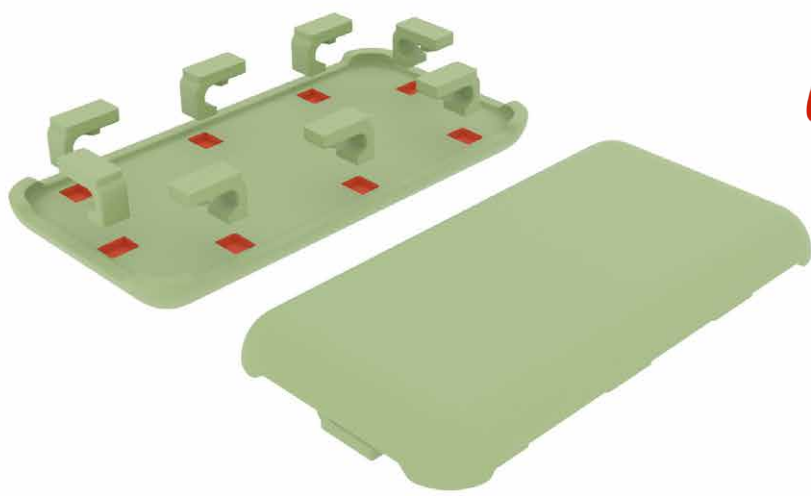
Soubory:
D-13-4x



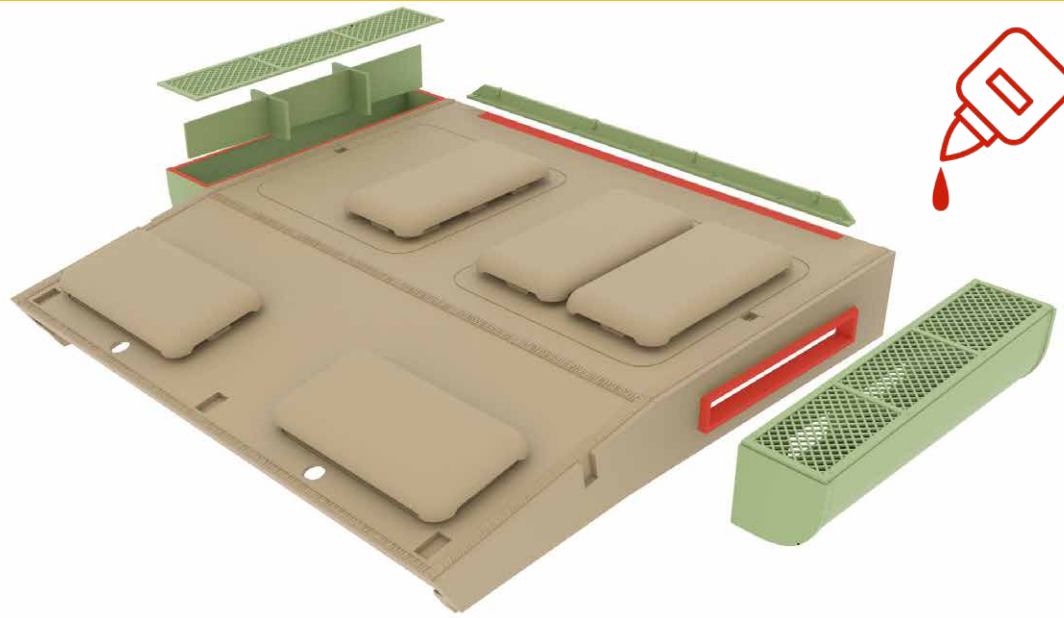
Soubory:
E-1-1x
E-2-1x



Soubory:
E-3-5x
E-4-40x



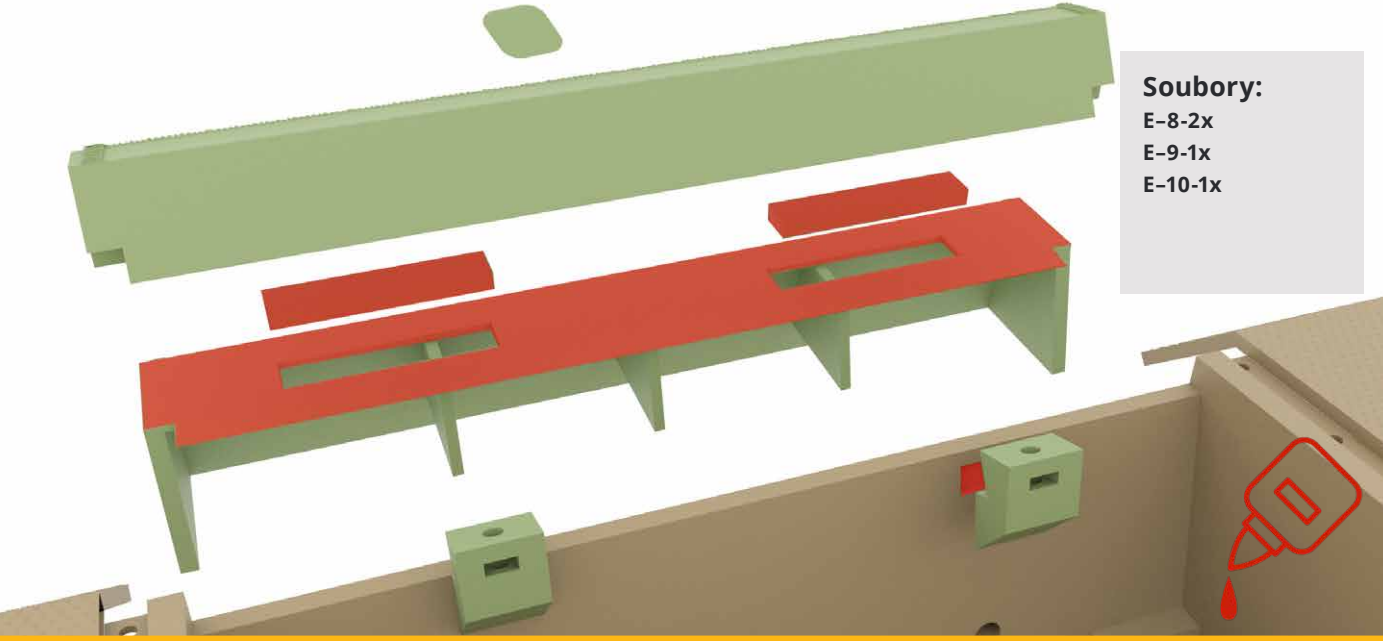
Soubory:
E-5-right-1x
E-5-left-1x
E-6-2x
E-7-right-1x
E-7-left-1x



Soubory:
E-7-2x



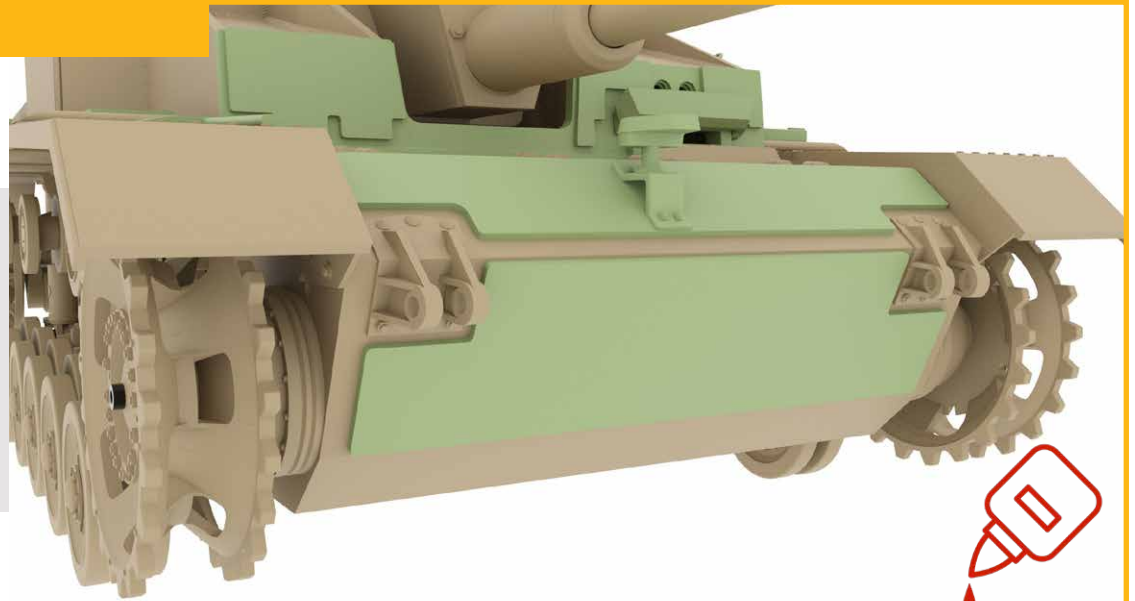
Soubory:
E-8-2x
E-9-1x
E-10-1x



F

Soubory:

- F-1-1x
- F-2-1x
- F-3-1x
- F-4-1x
- F-5-1x
- F-6-1x
- F-7-1x
- F-8-1x



Soubory:

- F-9-1x
- F-10-right-1x
- F-10-left-1x
- F-11-1x
- F-12-1x
- F-13-1x
- F-14-1x
- F-15-1x
- F-16-2x
- F-17-1x
- F-18-1x
- F-19-2x
- F-20-right-1x
- F-20-left-1x

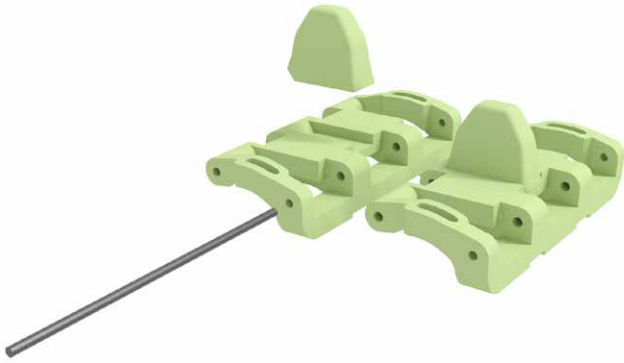


Soubory:

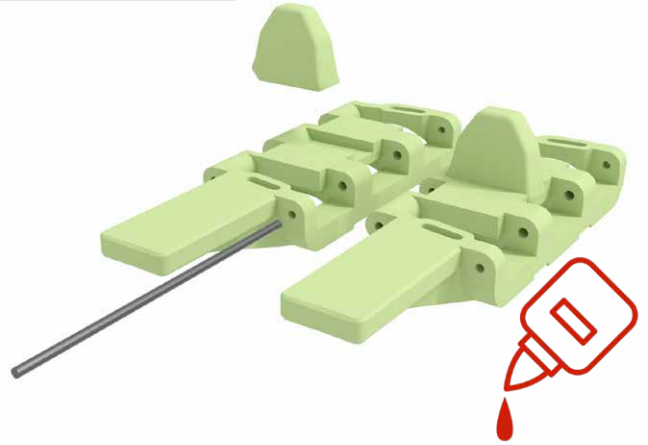
- F-21-right-1x
- F-21-left-1x
- F-22-right-1x
- F-22-left-1x
- F-23-2x
- F-24-2x
- F-25-2x
- F-26-2x
- F-27-2x
- F-28-2x
- F-29-FLEX-4x
- F-30-1x
- F-31-1x



Soubory:
G-1-188x
G-2-188x



Soubory:
G-3-right-94x
G-3-left-94x
G-2-188x





autor: **Petr Školař**
web: **www.3dtiks.store**
e-mail: **3dtisk@gpstudio.cz**