

VERZE 1.1.

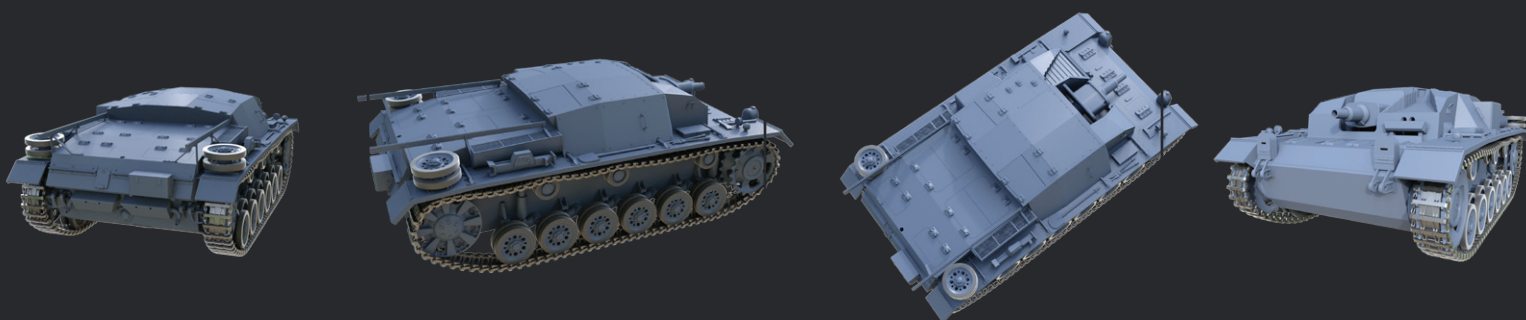
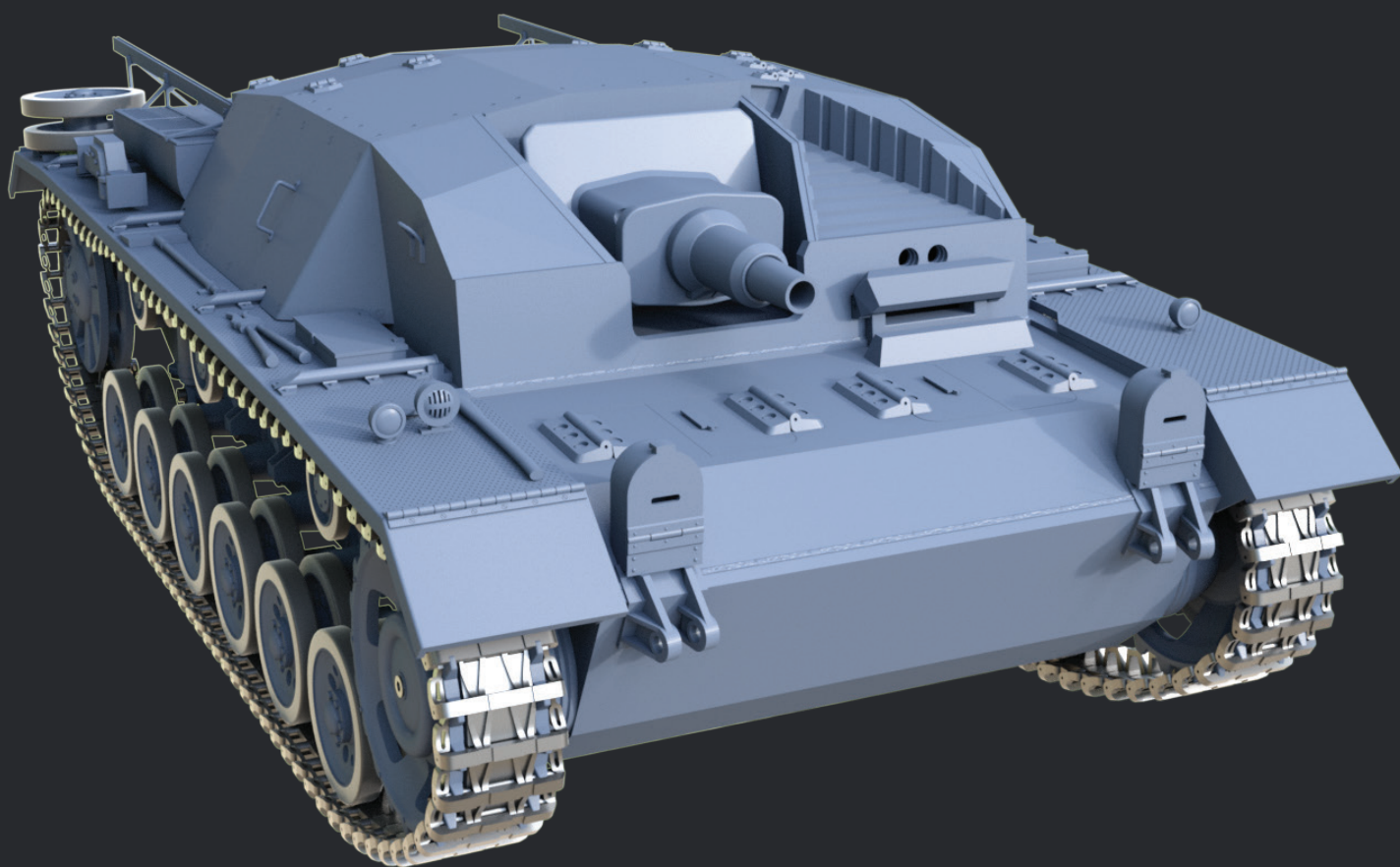
2023



Sturmgeschutz III

StuG III Ausf. A Sd.Kfz. 142 (1940)

1:10



NÁVOD KE STAVBĚ

www.3dtisk.store

Stavební manuál

3d tisk

TISKLÉ NA 3D TISKÁRNĚ ORIGINAL PRUSA I3 MK3S+

Nastavení tisku v PrusaSlicer-2.4.1

Nastavení tisku: **0.20mm** (u spojovacích dílů **0.15mm** přesnější např. vkládání kuličkových ložisek)

Výplň: **15%** (u pohyblivých částí 80% např. převodovky)

Filament: **Prusa PLA**

Souborů STL: **249 ks**



Tisk s minimálním množstvím vzpěr, intuitivní snadná stavba.

Spojovací mat., elektro

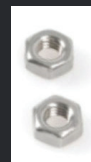
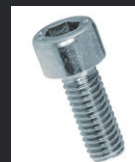
SPOJOVACÍ MATERIÁL

Šrouby

M3 x 16mm

M3 matka

Podložka průměr 10,5 mm - 2ks



Ložiska:

Kuličkové ložisko 10 x 15 x 4mm 28ks



XL rozvodový pás

70, zubů: 35

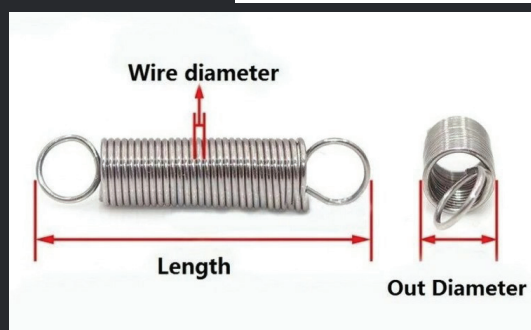
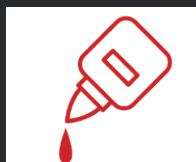


Pružiny:

0,5 mm, 30 mm, 5 mm

Drát vázací: tl. 1 mm

Sekundové lepodlo



ELEKTRICKÉ SOUČÁSTKY

Motory:

Stejnoseměrné motory 540

Provozní napětí 5-12V

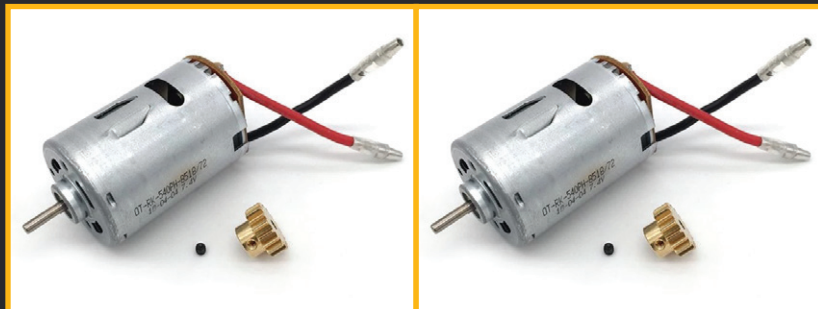
Délka hřídele 9 mm

Rozměry (Ø x d) 35.8 mm x 50 mm

Jmenovité napětí 7,2 V/DC

Průměr hřídele 3,17 mm

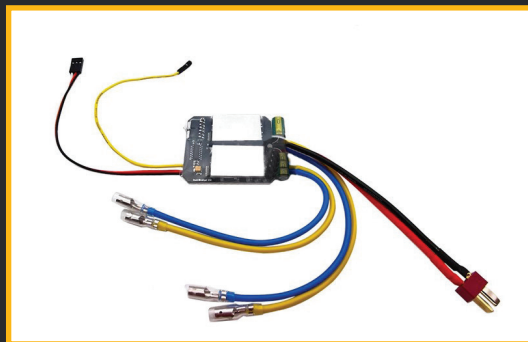
Pastorek 17T



Regulátory:

obousměrný elektrický regulátor rychlosti 40A 2x, pro stejnosměrné motory.

Zde je řešení v jednom: https://www.aliexpress.com/item/1005003605105604.html?spm=a2g0o.order_list.0.0.36281802RPbP2Y



Serva:

serva byla použita tato:

https://www.aliexpress.com/item/1005001415643140.html?spm=a2g0o.order_list.0.0.36281802RPbP2Y

html?spm=a2g0o.order_list.0.0.36281802RPbP2Y

Servo pro otáčení věže se musí upravit například podle tohoto návodu:

<https://www.youtube.com/watch?v=4Z-j6bUJTQ8>



SCHEMA ZAPOJENÍ

SERVO-1

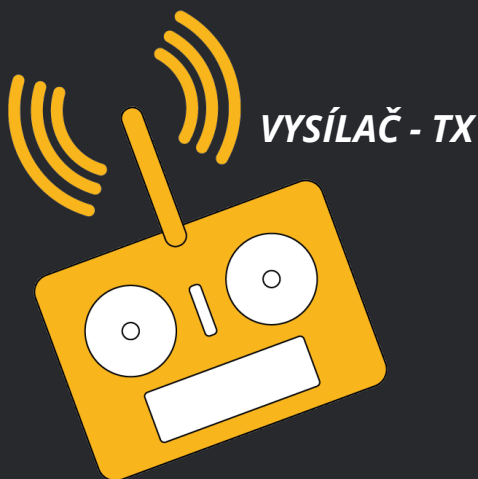
servo pro polohování kanónu

SERVO-2

Upravené servo pro otáčení věže

PŘIJÍMAČ -RX

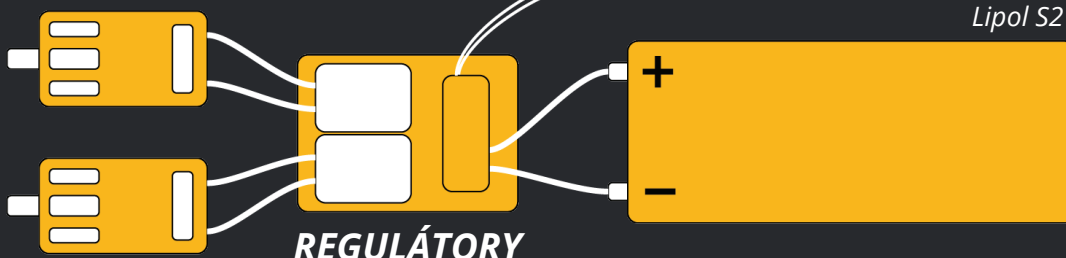
Minimálně 4 kanálový přijímač, pro řízení 2x motor, 1x servo otáčení věže, 1x polohování kanónu.



VYSÍLAČ - TX

MOTORY

Stejnoseměrné motory 540



REGULÁTORY

BATERIE

Lipol S2 7,4 V

Sturmgeschutz III

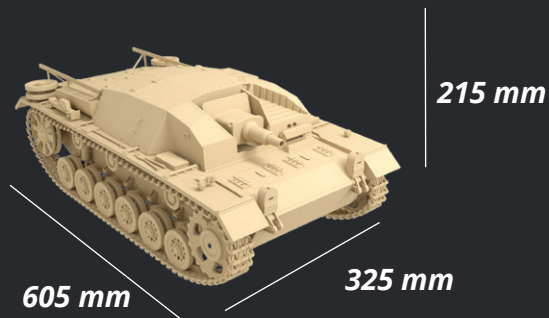
StuG III Ausf. A Sd.Kfz. 142 (1940)

PARAMETRY MODELU

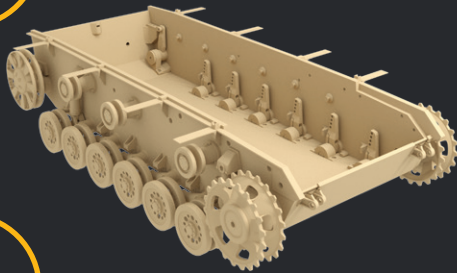
Měřítko: 1:10

Rozměr: 605 x 325 x 215 mm

Váha: 4,5 Kg



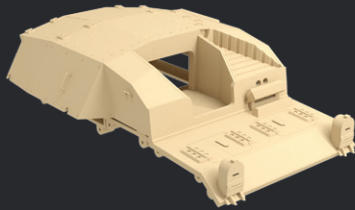
A



E



B



F



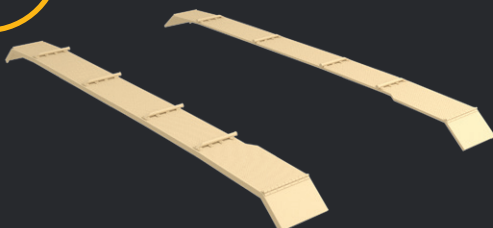
C



G



D

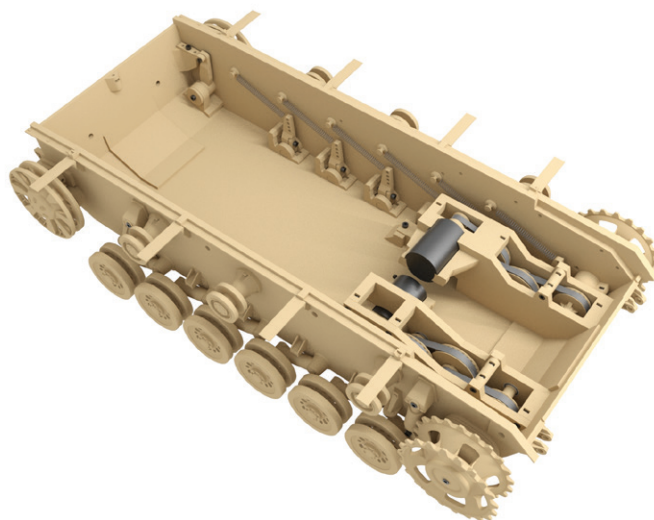


P



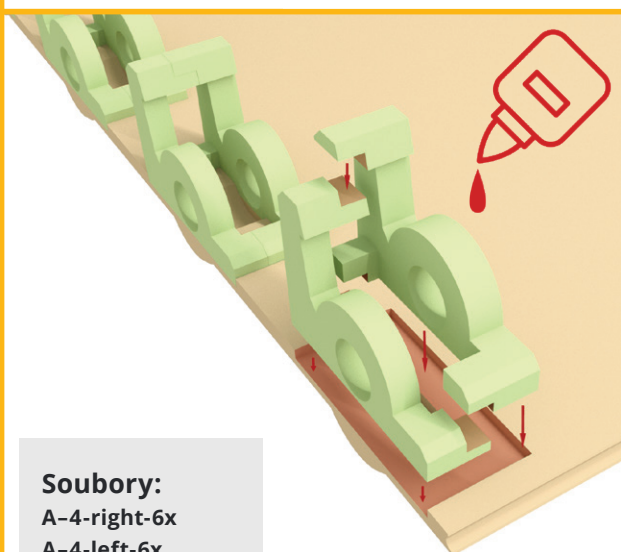
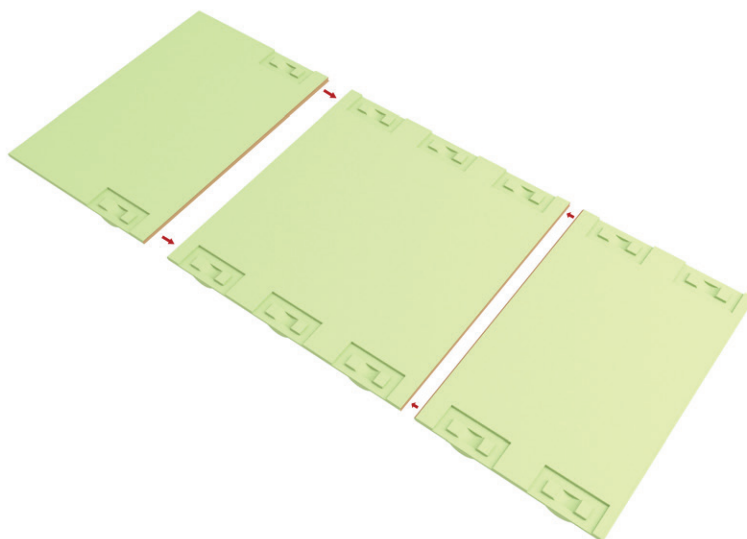
StuG III

A

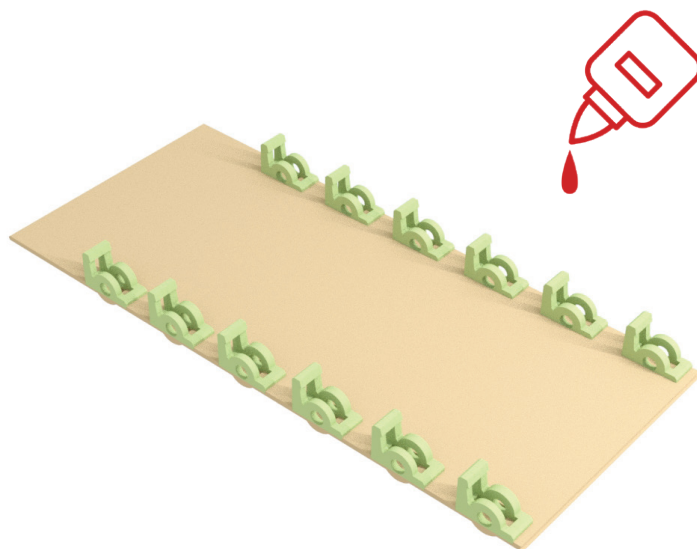


Soubory:

A-1-1x
A-2-1x
A-3-1x



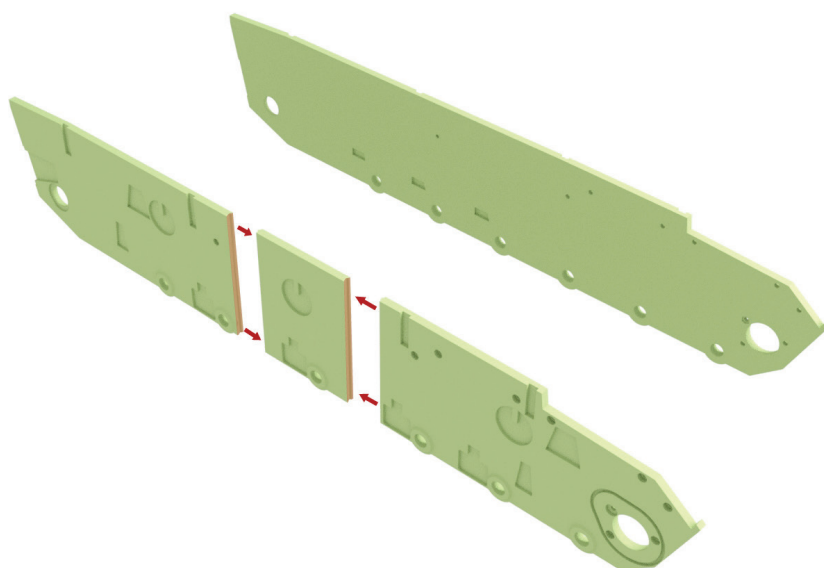
Soubory:
A-4-right-6x
A-4-left-6x
A-5-right-6x
A-5-left-6x



A

Soubory:

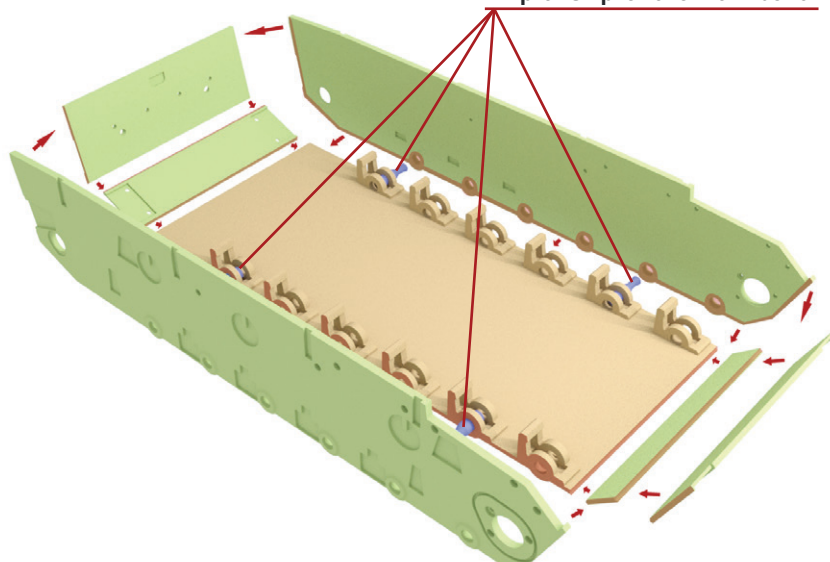
A-6-right-1x
A-6-left-1x
A-7-right-1x
A-7-left-1x
A-8-right-1x
A-8-left-1x



Soubory:

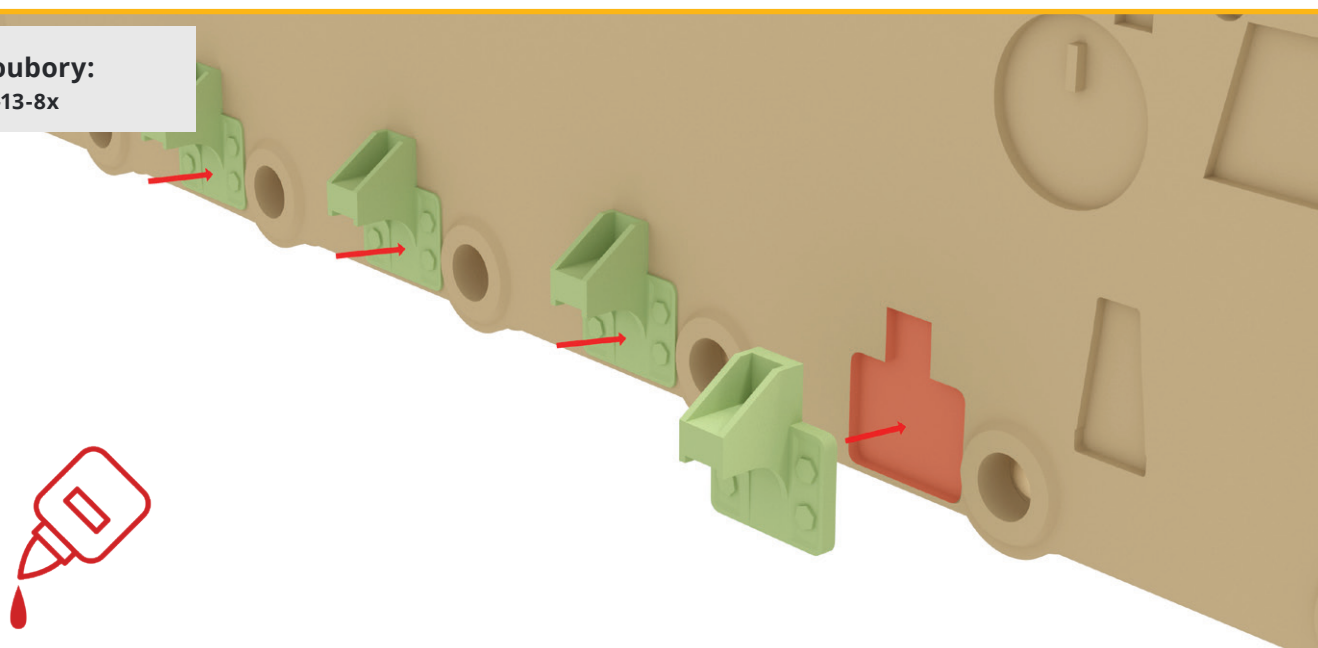
A-8-4x
A-9-1x
A-10-1x
A-11-1x
A-12-1x

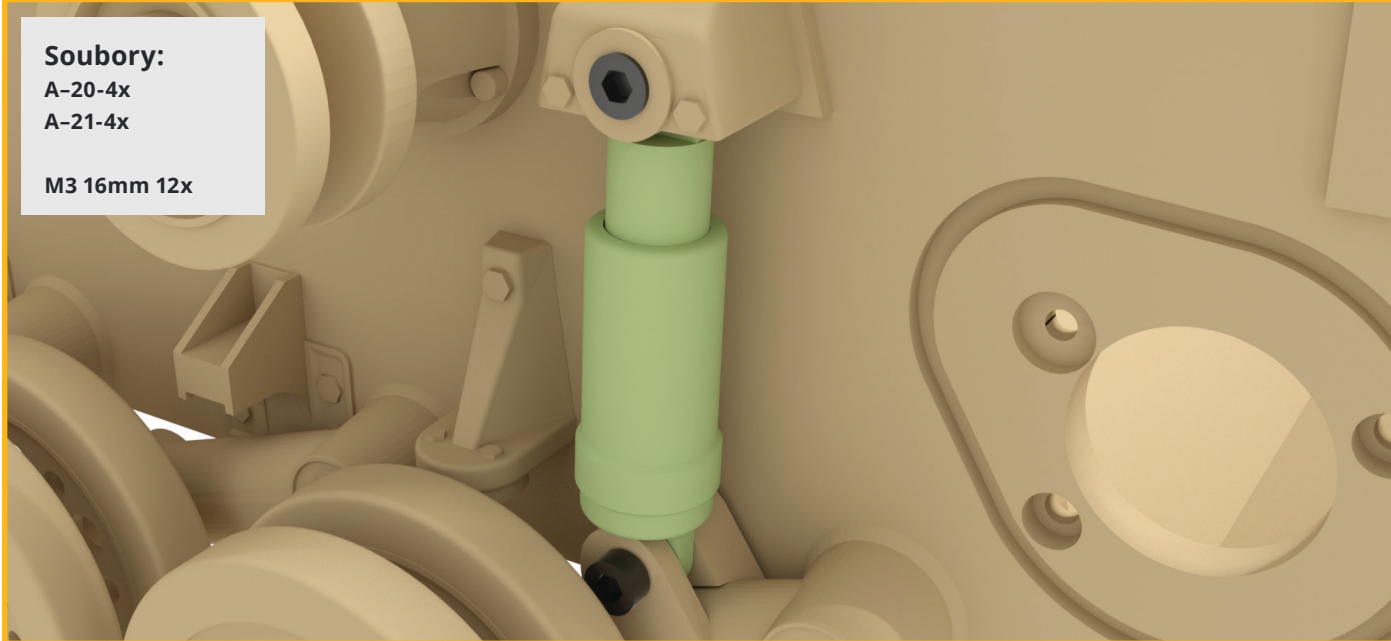
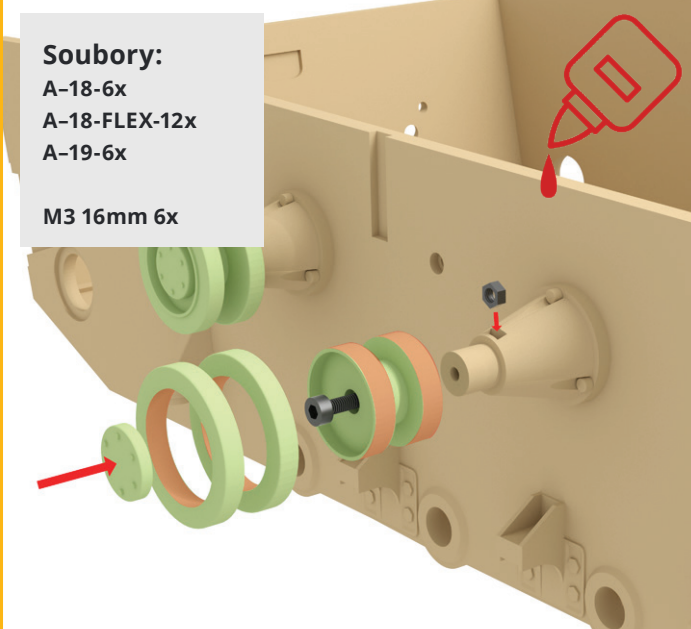
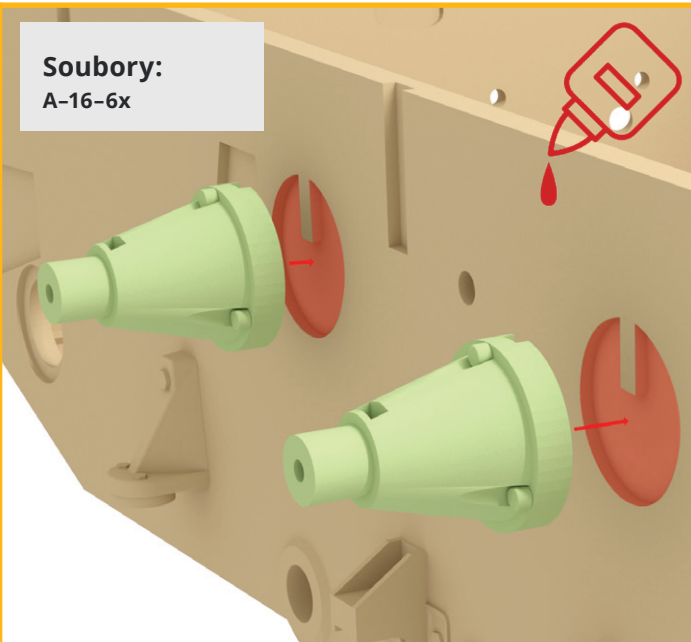
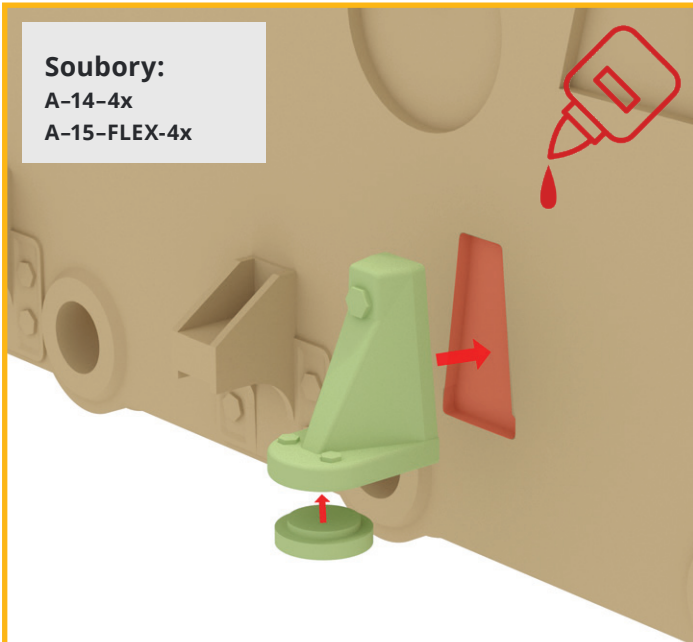
Přípravek pro zarovnání boků



Soubory:

A-13-8x



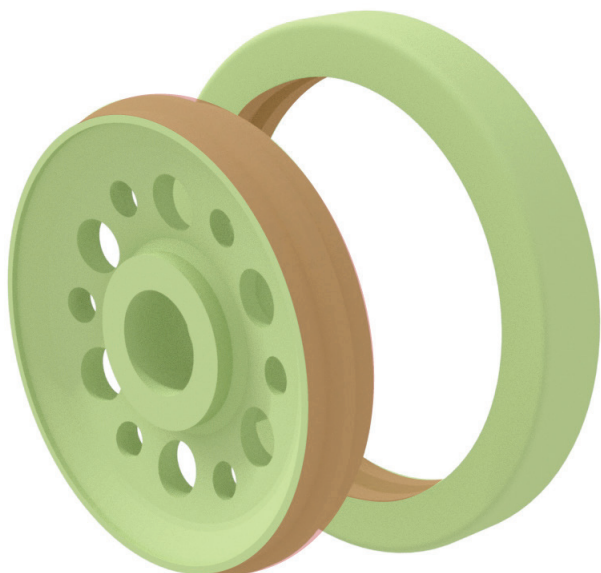


A

Soubory:

A-22-12x

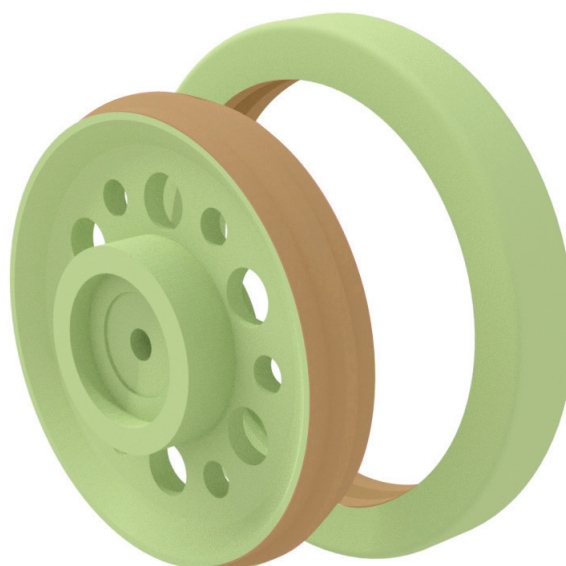
A-24-FLEX-24x



Soubory:

A-23-12x

A-24-FLEX-24x



Soubory:

A-25-12x

A-26-right-2x

A-26-left-2x

A-27-right-4x

A-28-12x

(A-22-12x,

A-23-12x,

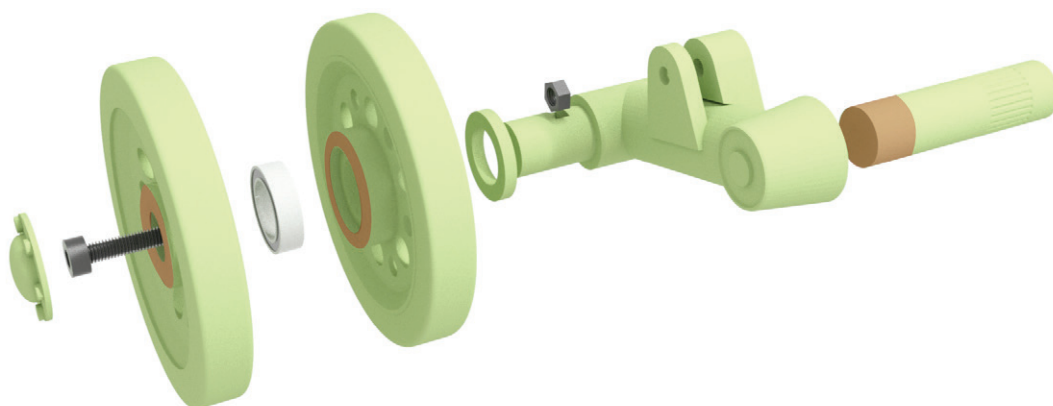
A-24-FLEX-24x)

A-29-12x

M3 16mm 12x

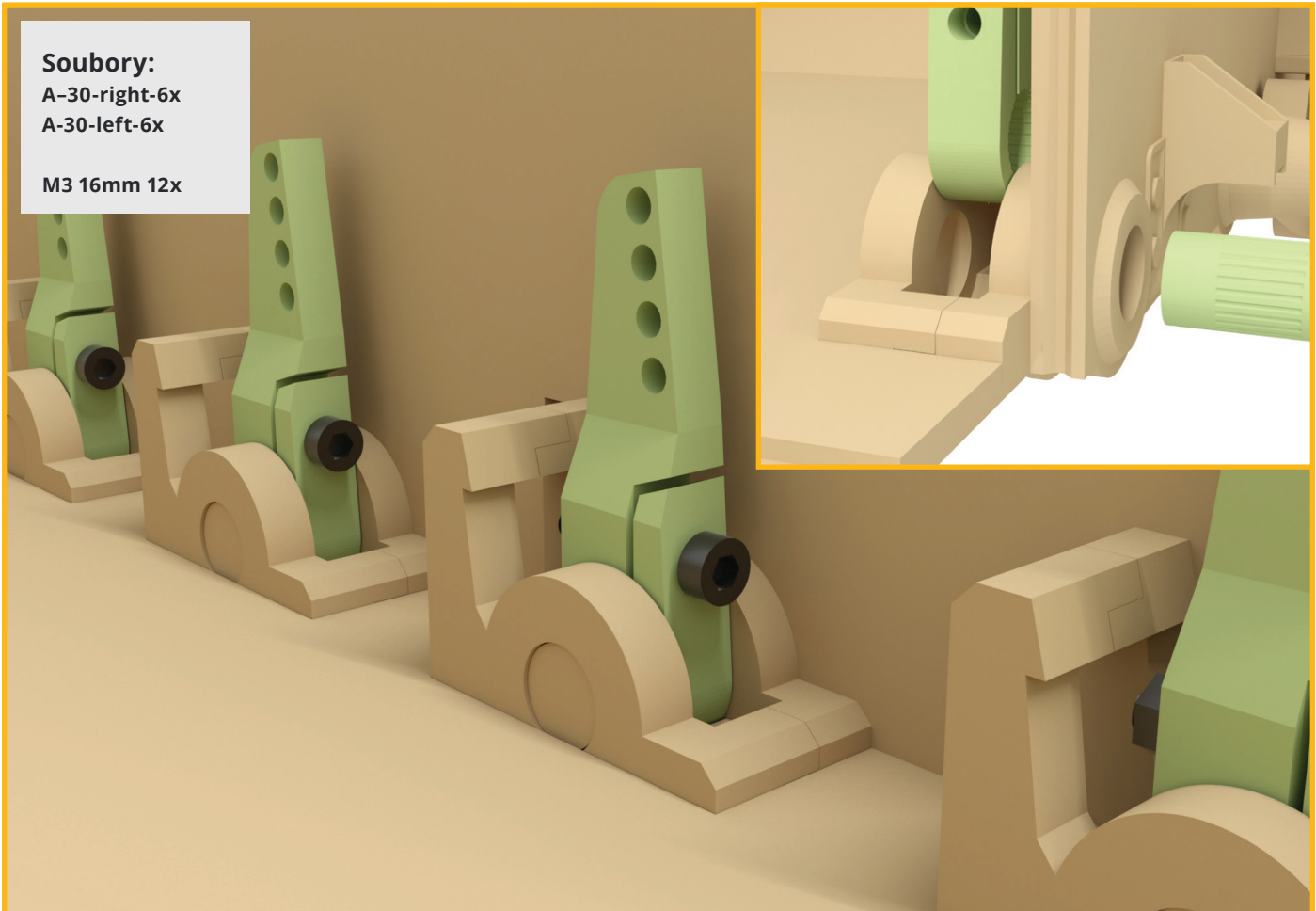
Ložisko

10x15x4 mm 6x



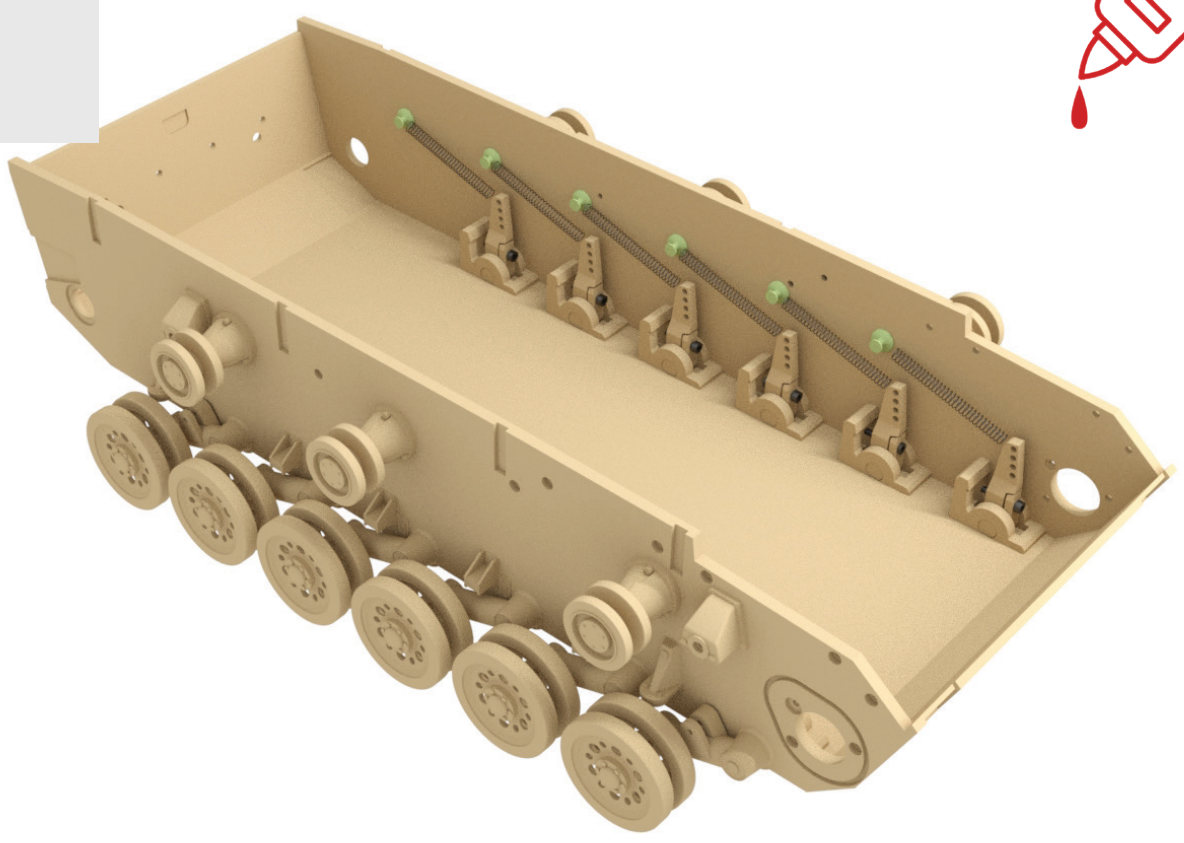
Soubory:
A-30-right-6x
A-30-left-6x

M3 16mm 12x



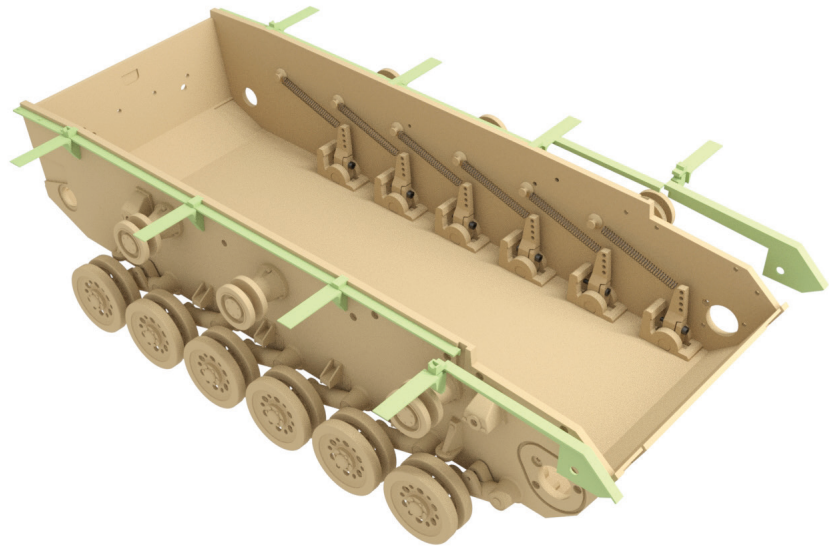
Soubory:
A-31-12x

Pružina



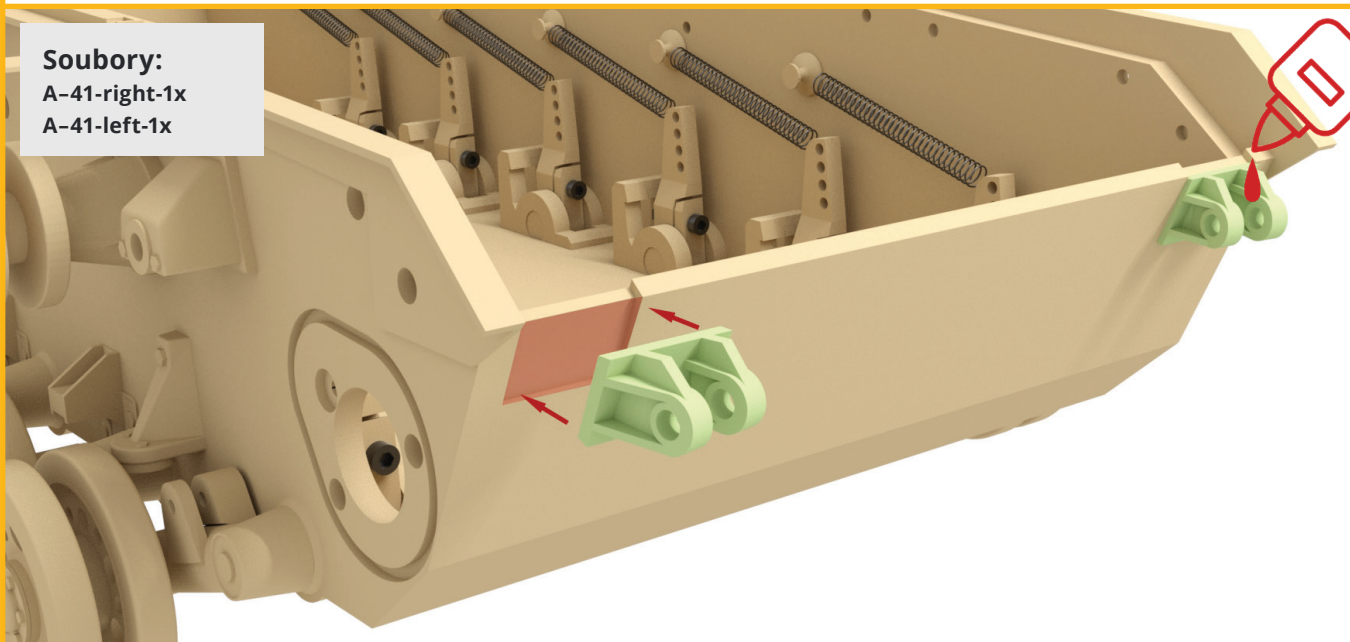
Soubory:

- A-32-right-1x
- A-32-left-1x
- A-33-right-1x
- A-33-left-1x
- A-34-right-1x
- A-34-left-1x
- A-35-right-1x
- A-35-left-1x
- A-36-right-1x
- A-36-left-1x
- A-37-right-1x
- A-37-left-1x
- A-38-right-1x
- A-38-left-1x
- A-39-right-1x
- A-39-left-1x
- A-40-right-1x
- A-40-left-1x



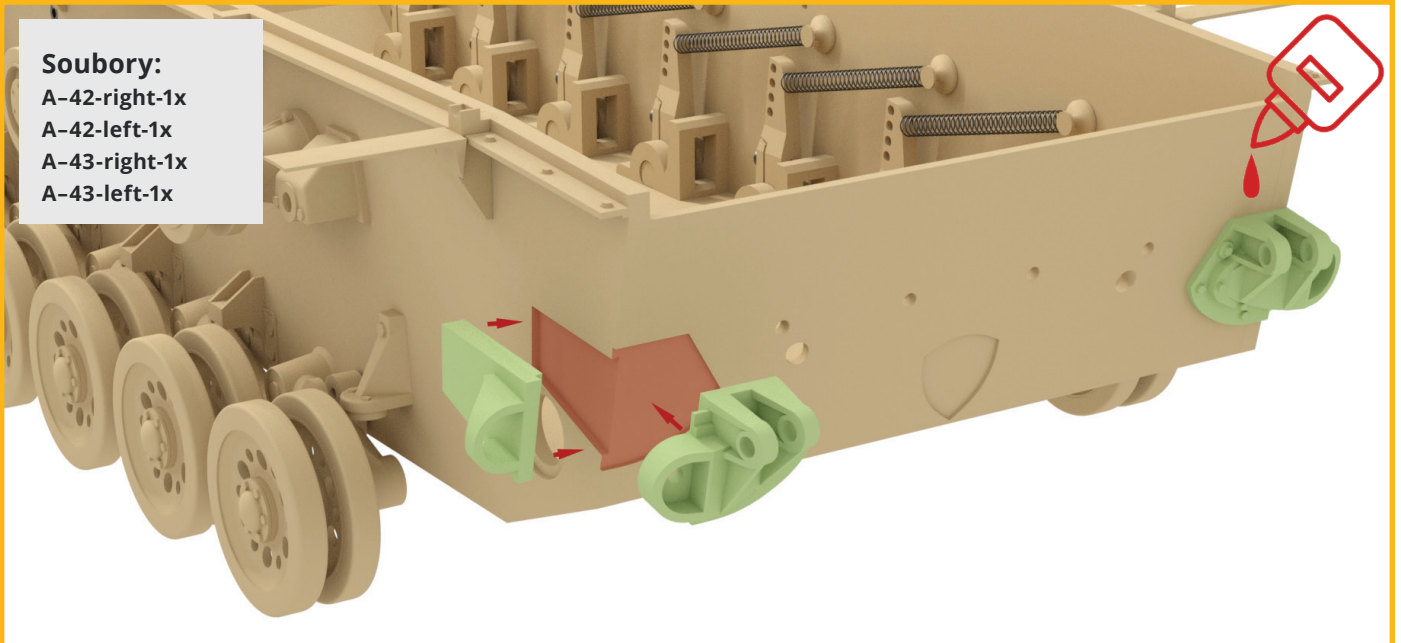
Soubory:

- A-41-right-1x
- A-41-left-1x



Soubory:

- A-42-right-1x
- A-42-left-1x
- A-43-right-1x
- A-43-left-1x



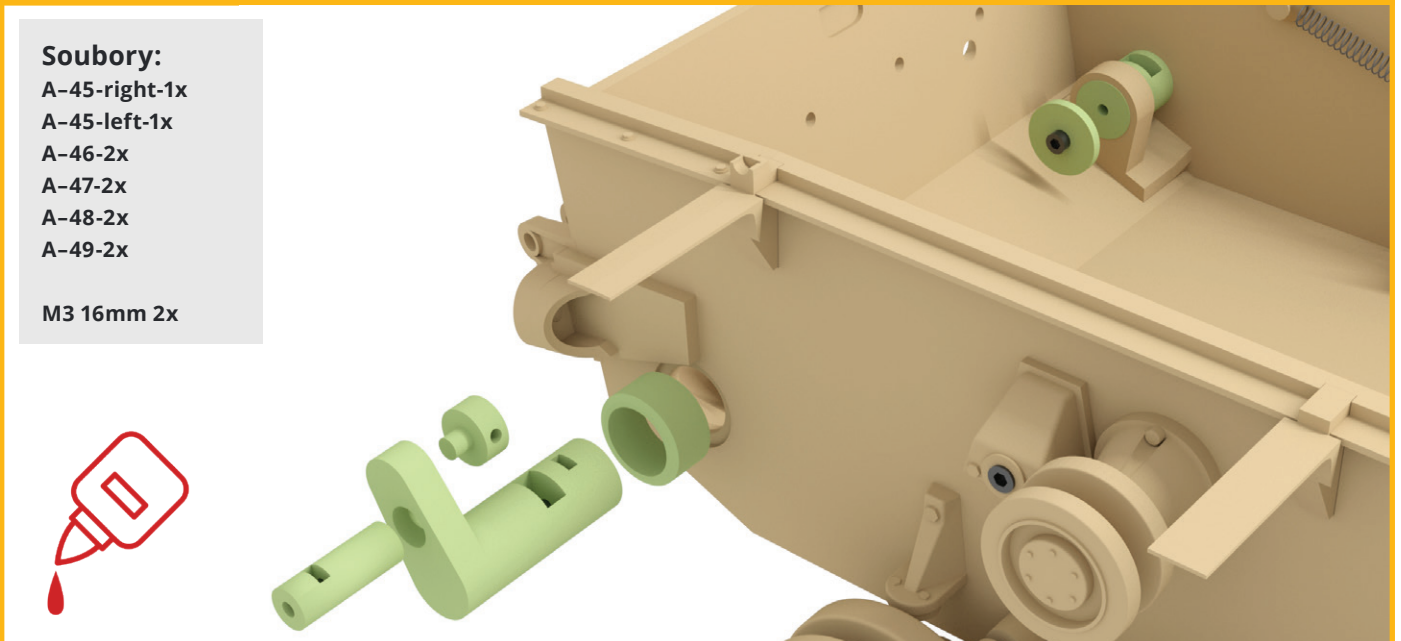
Soubory:

- A-44-right-1x
- A-44-left-1x



Soubory:

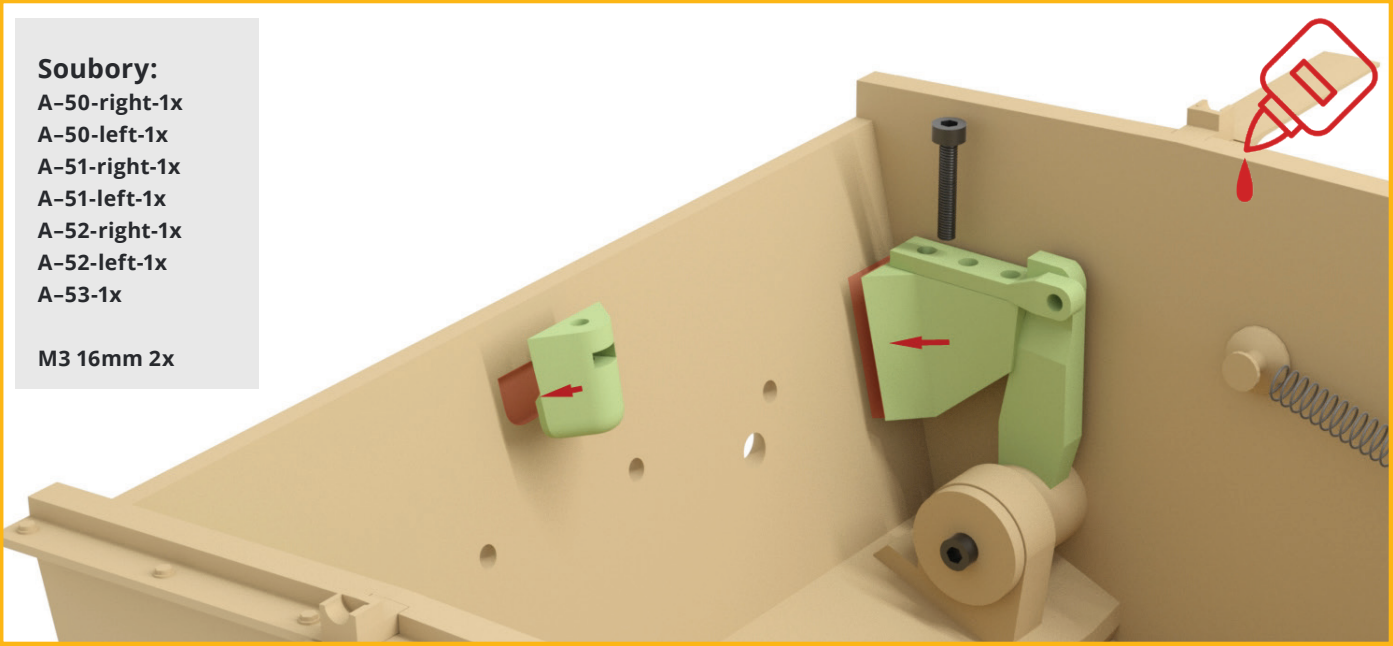
- A-45-right-1x
- A-45-left-1x
- A-46-2x
- A-47-2x
- A-48-2x
- A-49-2x
- M3 16mm 2x



Soubory:

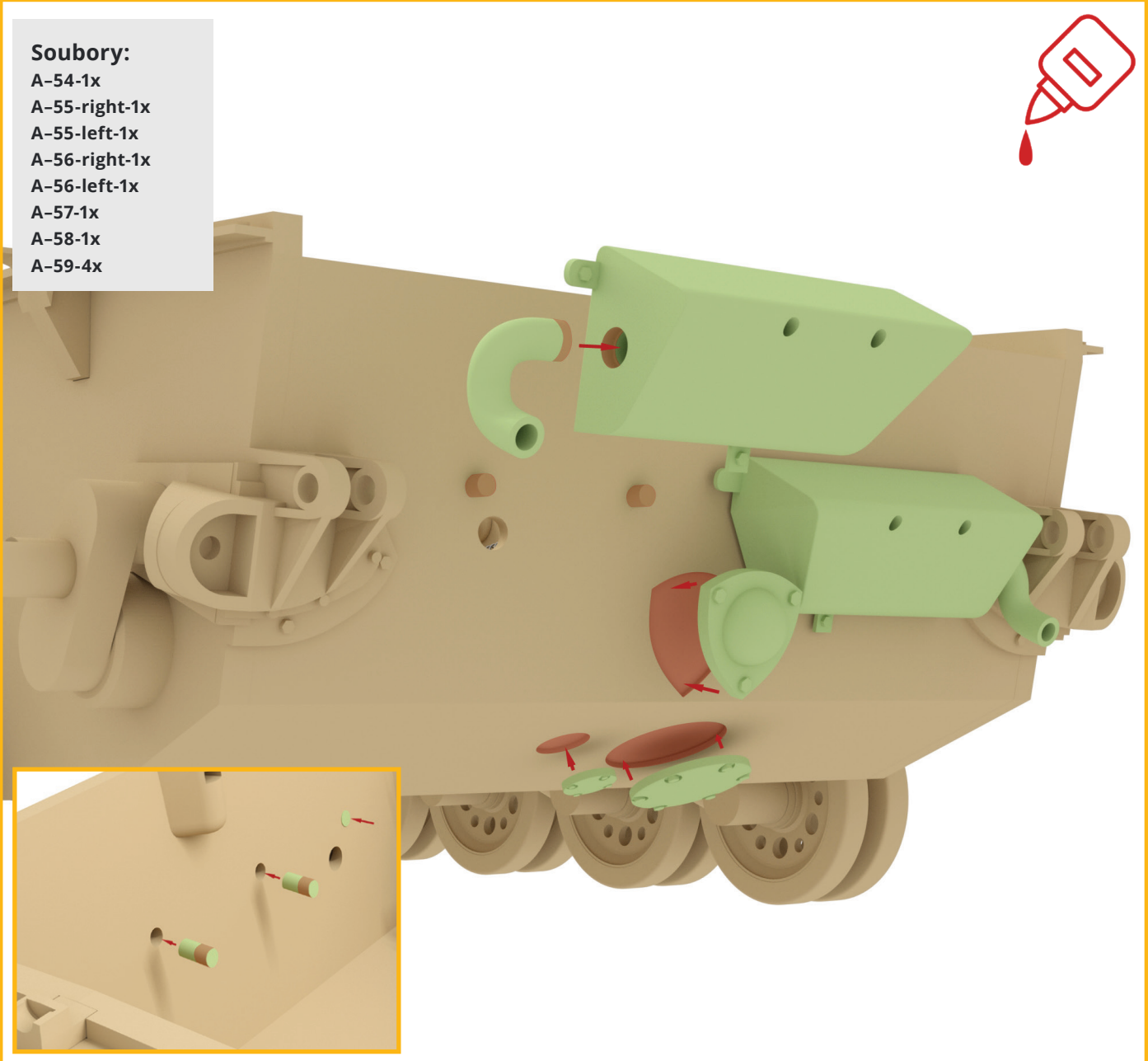
- A-50-right-1x
- A-50-left-1x
- A-51-right-1x
- A-51-left-1x
- A-52-right-1x
- A-52-left-1x
- A-53-1x

M3 16mm 2x



Soubory:

- A-54-1x
- A-55-right-1x
- A-55-left-1x
- A-56-right-1x
- A-56-left-1x
- A-57-1x
- A-58-1x
- A-59-4x



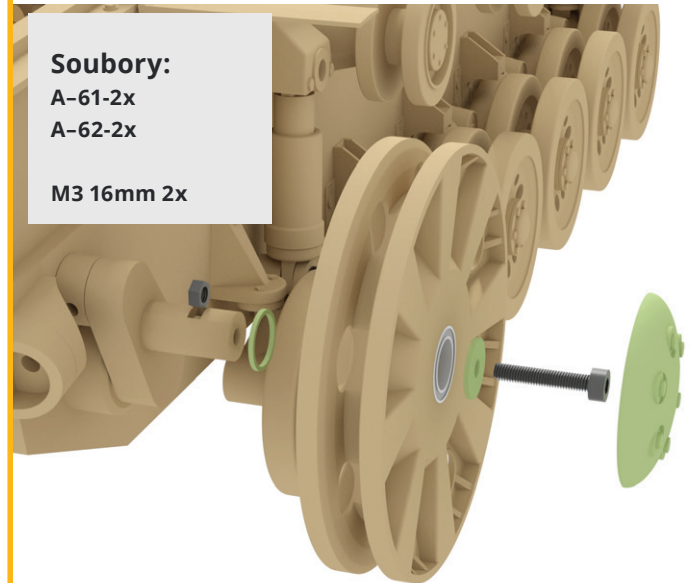
Soubory:
A-60-2x

Ložiska
10x15x4 mm 2x



Soubory:
A-61-2x
A-62-2x

M3 16mm 2x



P

Soubory:

P-1-right-1x

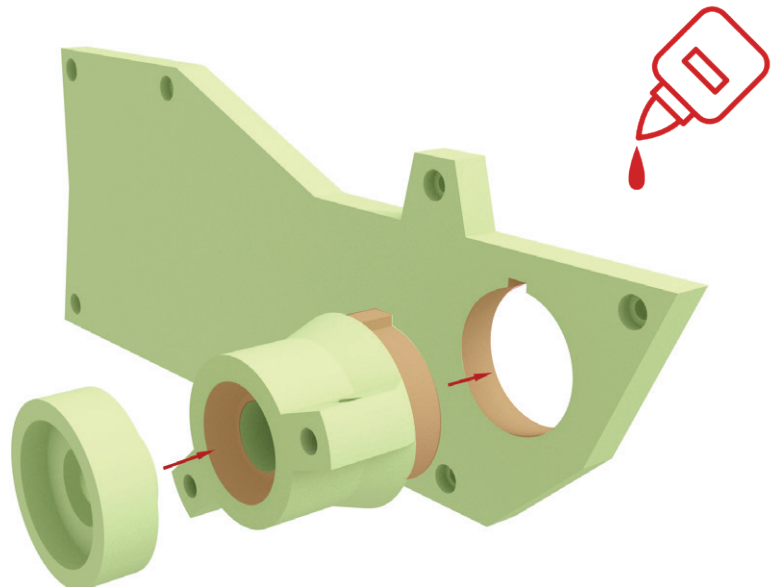
P-1-left-1x

P-2-2x

P-3-right-1x

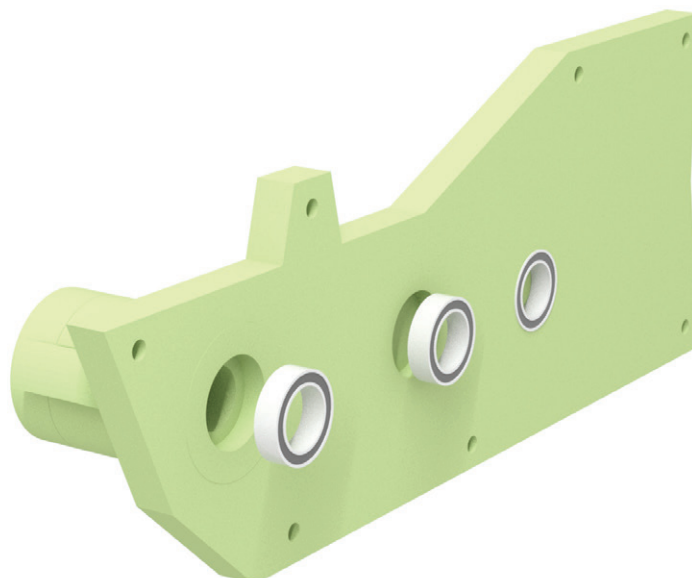
P-3-left-1x

XL rozvodový pás 70, zubů: 35x



Soubory:

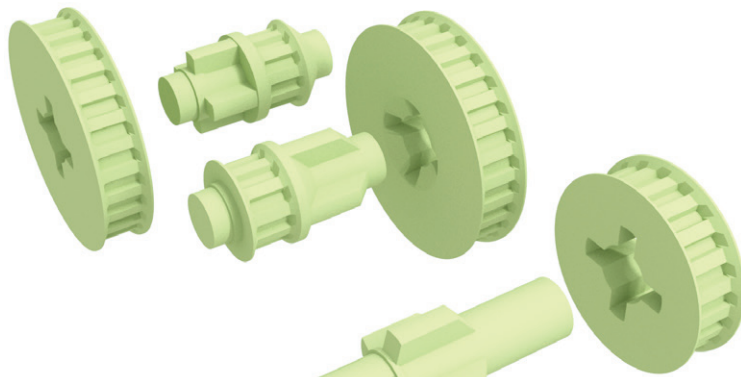
Ložiska
10x15x4 mm 6x



Soubory:

- P-4-2x
- P-5-2x
- P-6-2x
- P-7-2x
- P-8-2x
- P-9-2x
- P-10-2x

M3 16mm 14x



Soubory:

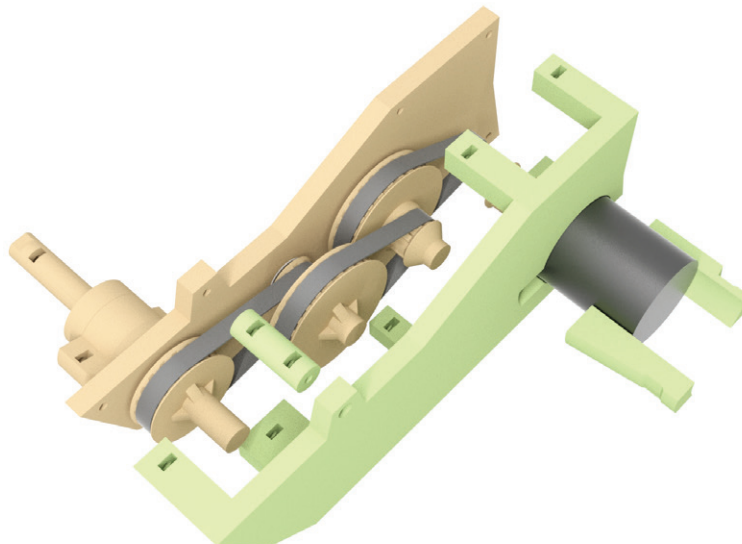
- P-11-right-1x
- P-11-left-1x

Ložiska
10x15x4 mm 6x



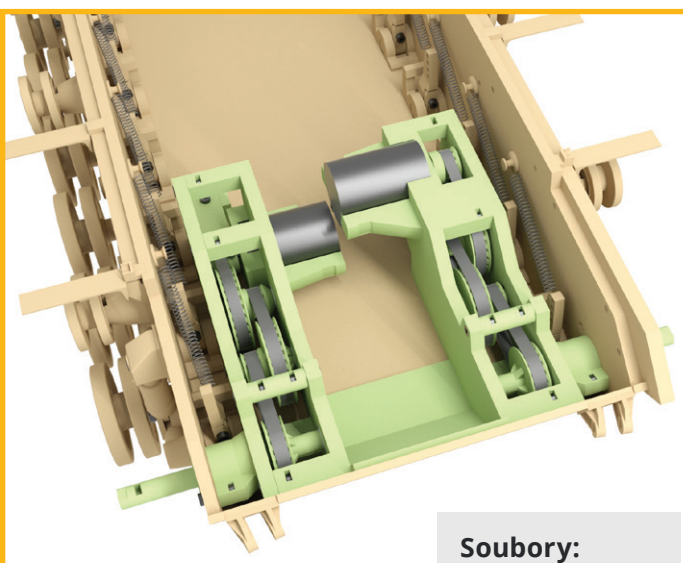
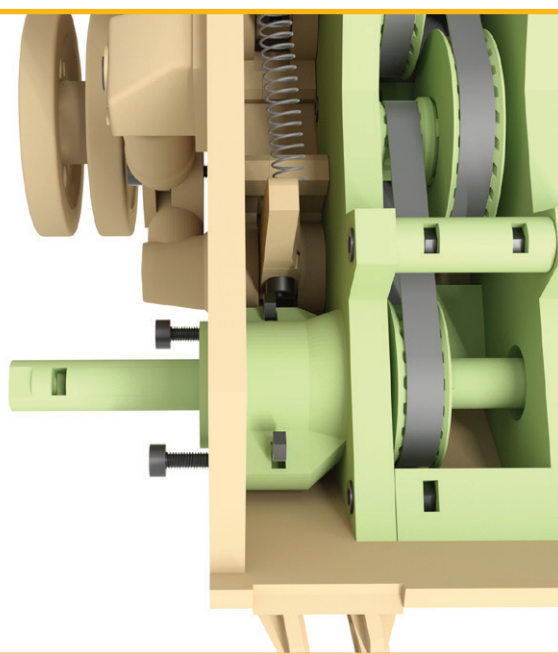
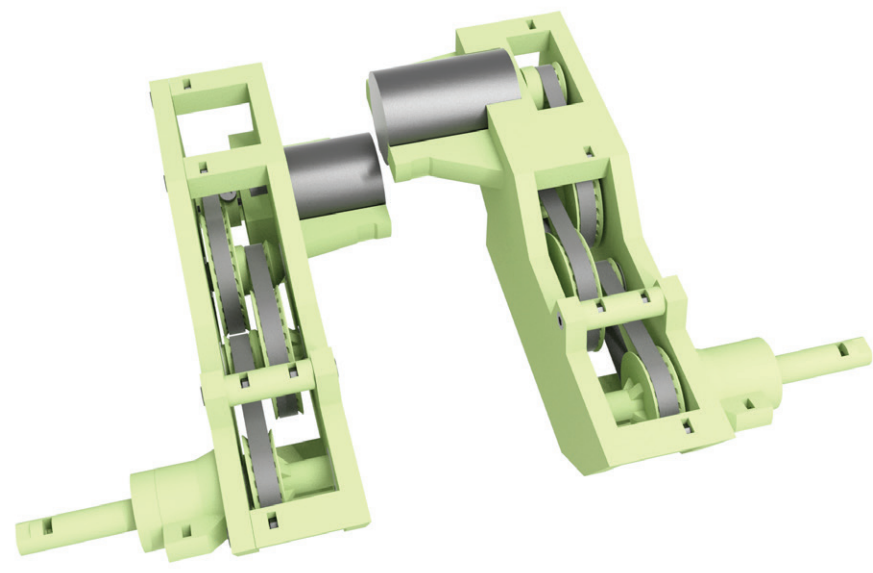
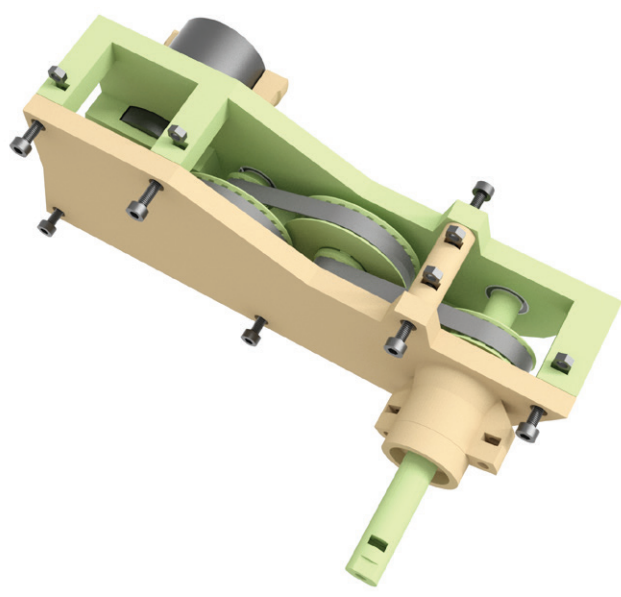
Soubory:

- P-12-2x
- P-13-right-1x
- P-13-left-1x
- P-14-right-1x
- P-14-left-1x



Soubory:

M3 16mm 8x



Soubory:

P-15-1x

A

Soubory:

A-63-right-1x
A-63-left-1x
A-64-right-1x
A-64-left-1x

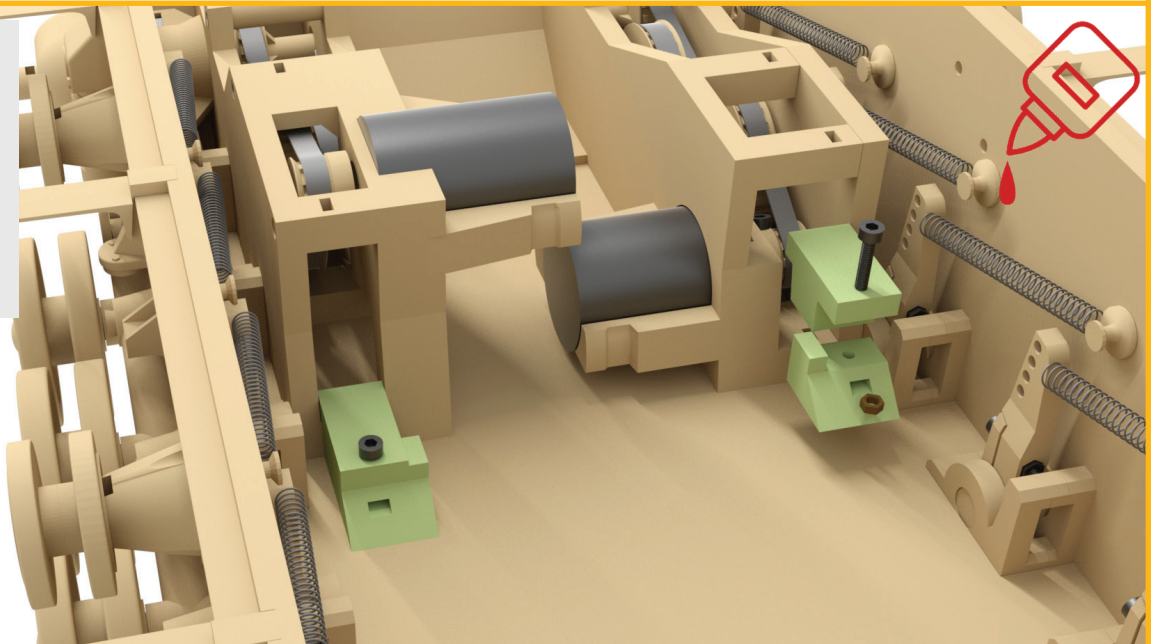
M3 16mm 2x
Ložiska
10x15x4 mm 2x



Soubory:

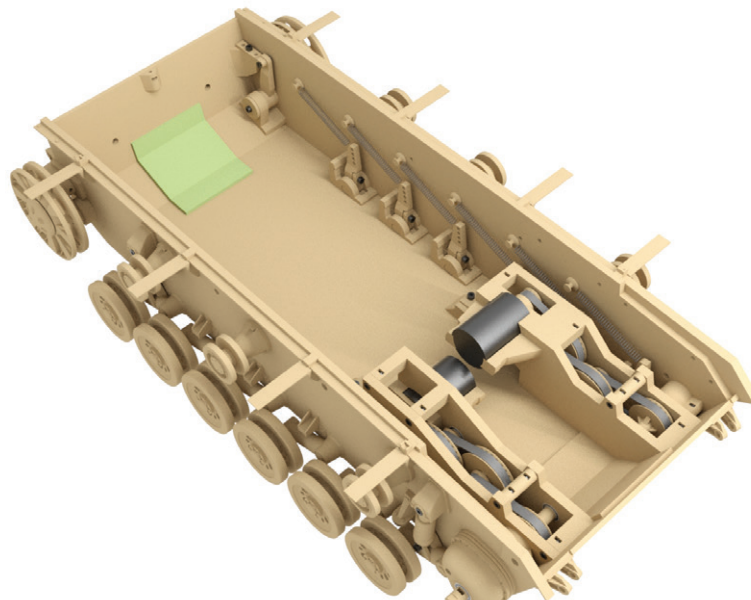
P-16-right-1x
P-16-left-1x
P-17-right-1x
P-17-left-1x

M3 16mm 2x



Soubory:

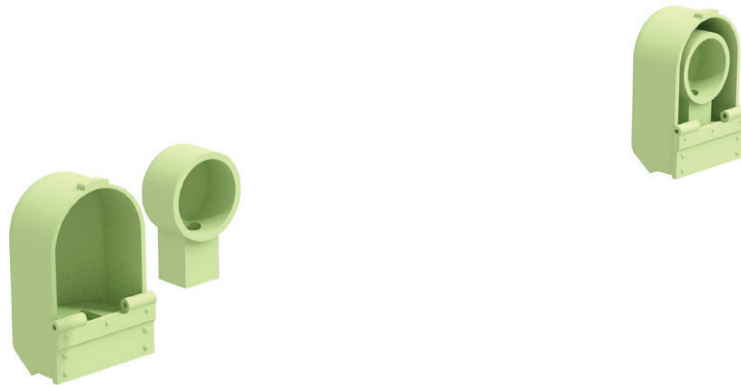
P-65-1x



Soubory:

B-1-2x

B-2-2x



Soubory:

B-3-2x

Wire 1mm



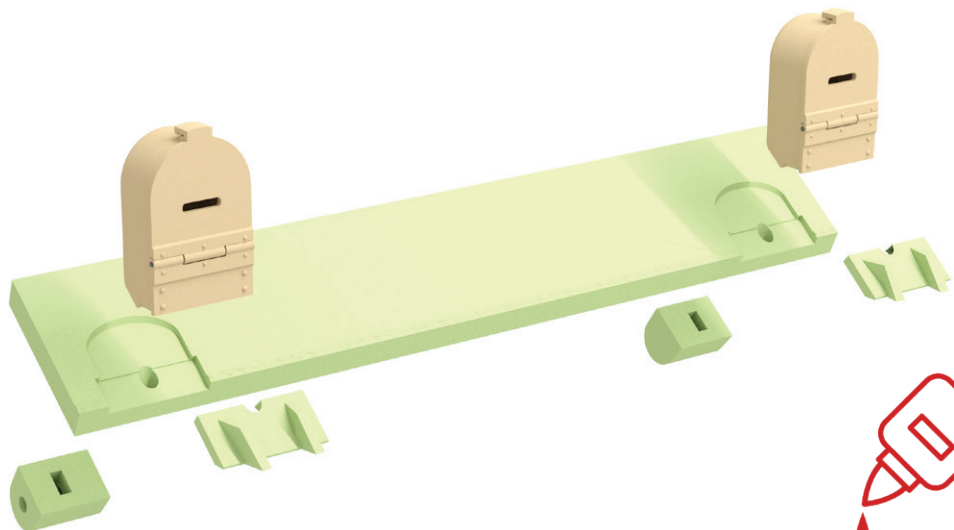
Soubory:

B-4-1x

B-5-right-1x

B-5-left-1x

B-6-14x

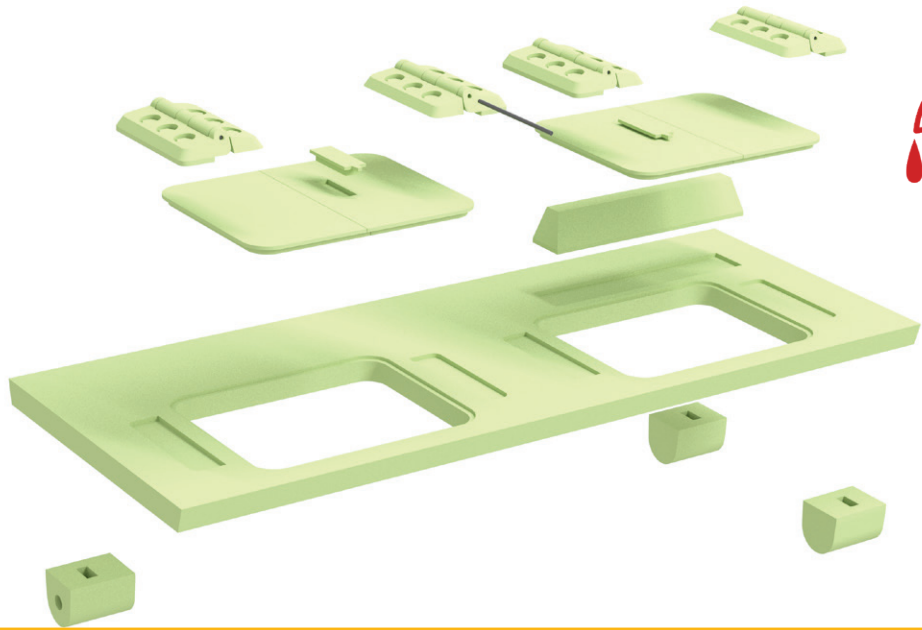


B

Soubory:

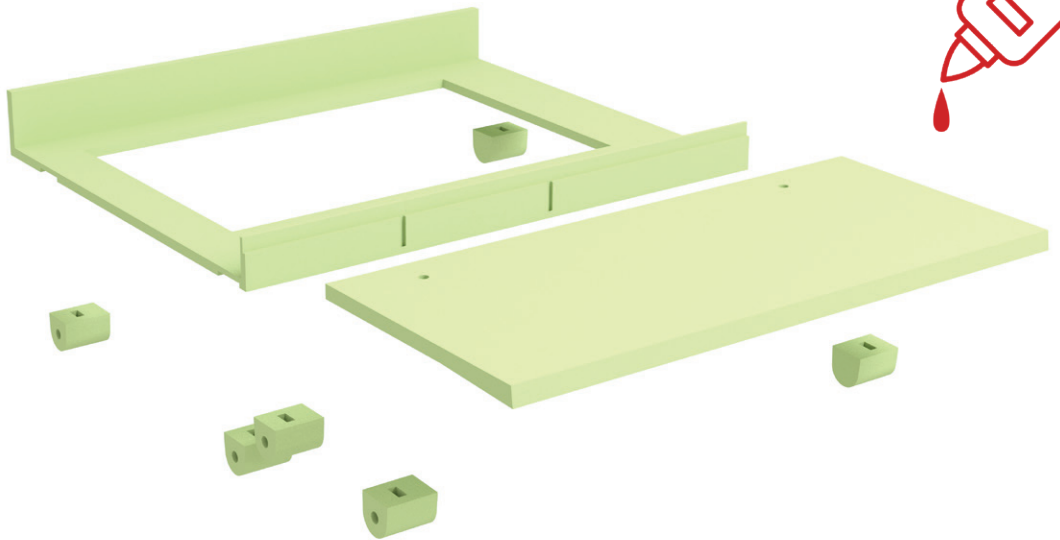
- B-7-1x
- B-8-right-1x
- B-8-left-1x
- B-9-right-1x
- B-9-left-1x
- B-6-14x
- B-10-2x
- B-11-4x
- B-12-4x
- B-13-1x

Wire 1mm



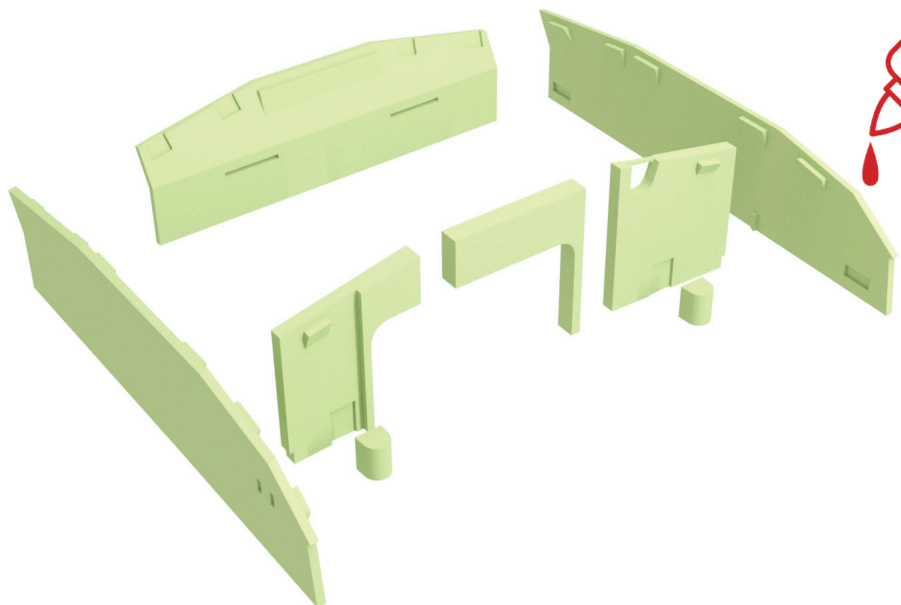
Soubory:

- B-14-1x
- B-15-1x
- B-6-14x

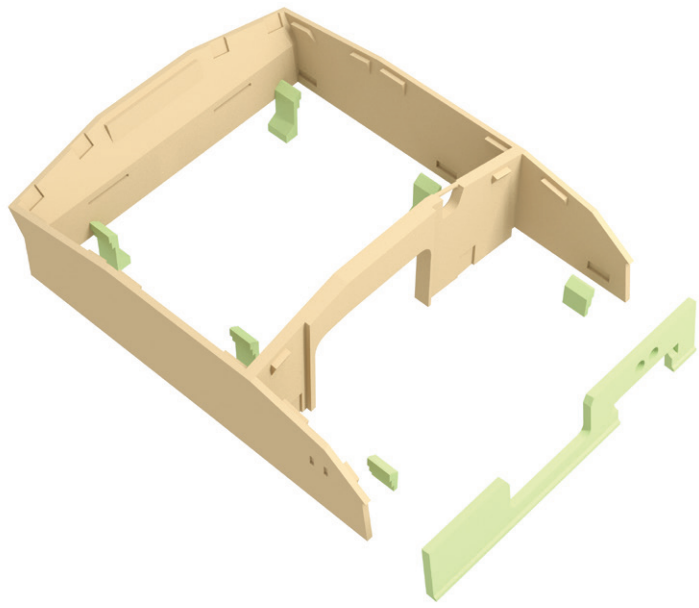


Soubory:

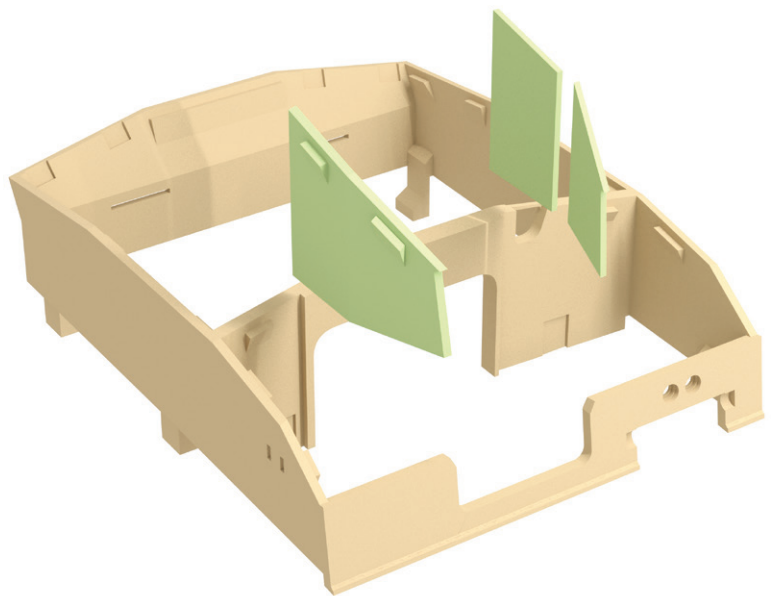
- B-16-right-1x
- B-16-left-1x
- B-17-1x
- B-18-1x
- B-19-1x
- B-20-1x
- B-6-14x



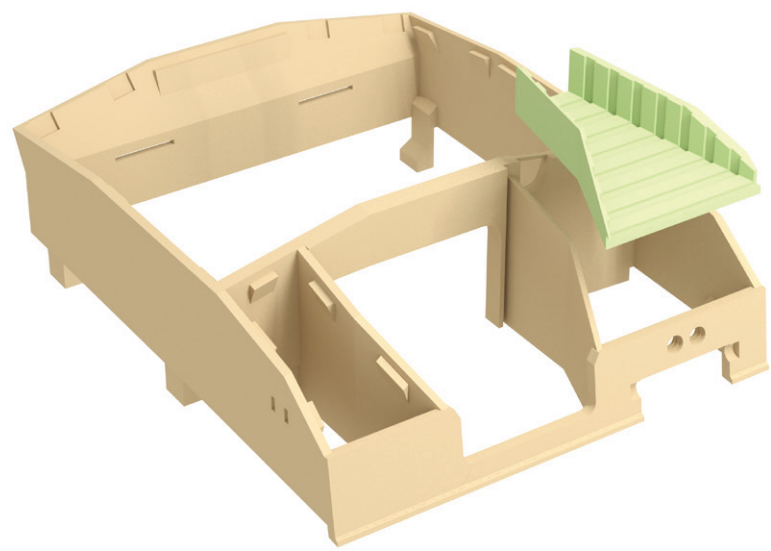
Soubory:
B-21-1x
B-22-2x
B-23-4x



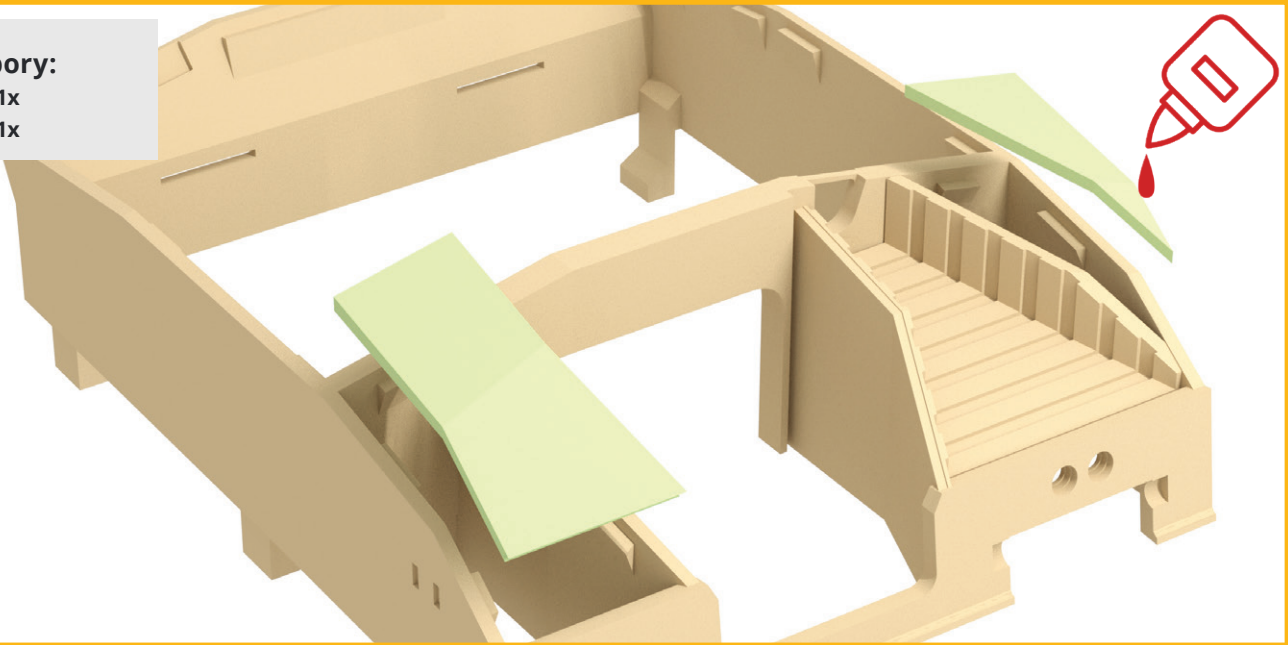
Soubory:
B-24-1x
B-25-1x
B-26-1x



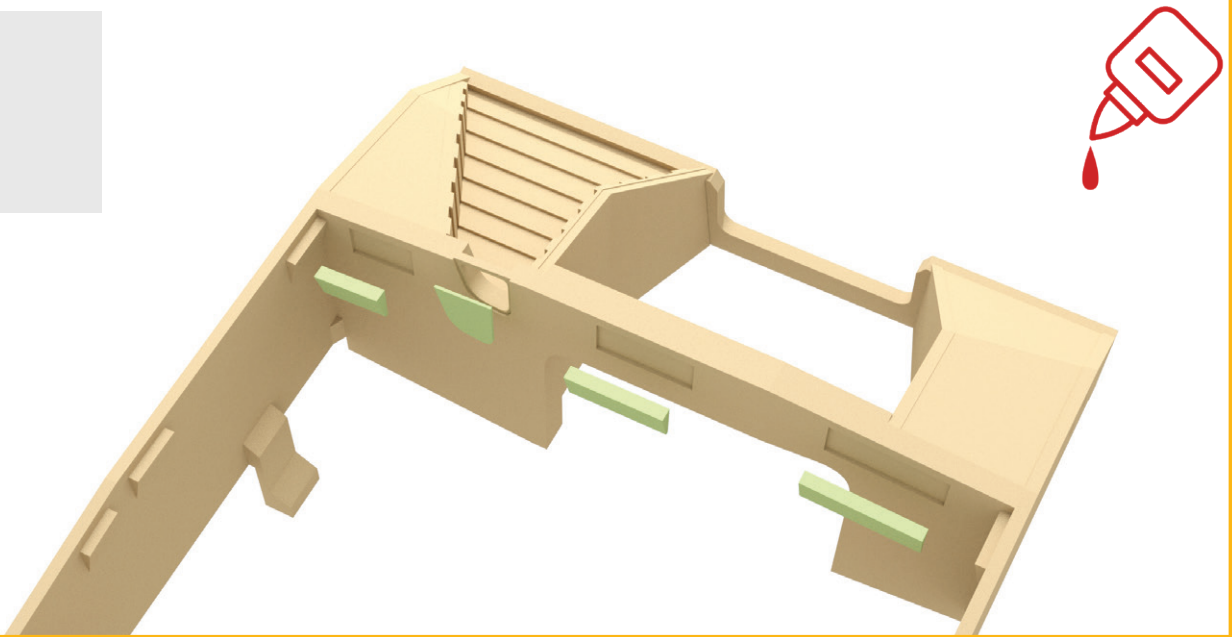
Soubory:
B-27-1x



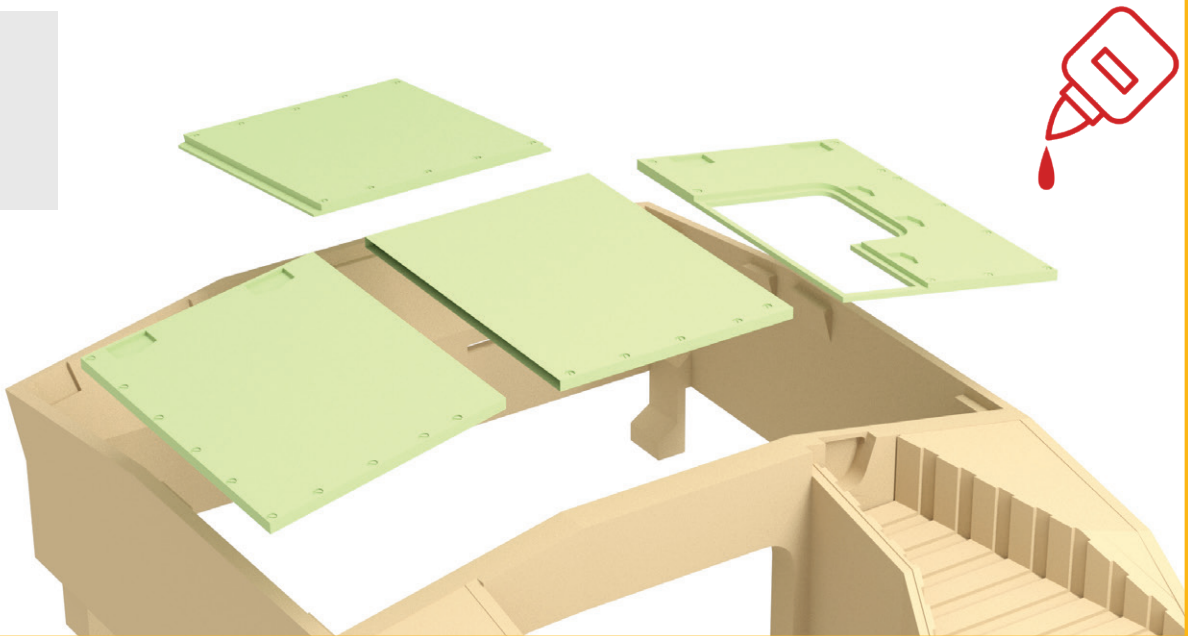
Soubory:
B-28-1x
B-29-1x



Soubory:
B-30-1x
B-31-1x
B-32-1x
B-33-1x



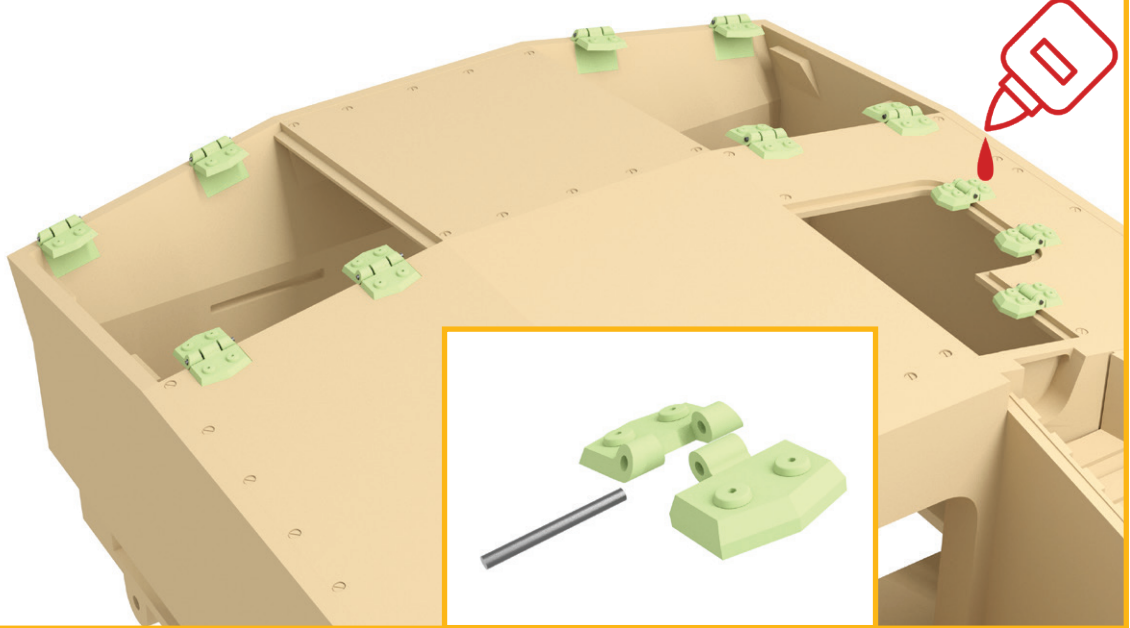
Soubory:
B-34-1x
B-35-1x
B-36-1x
B-37-1x



Soubory:

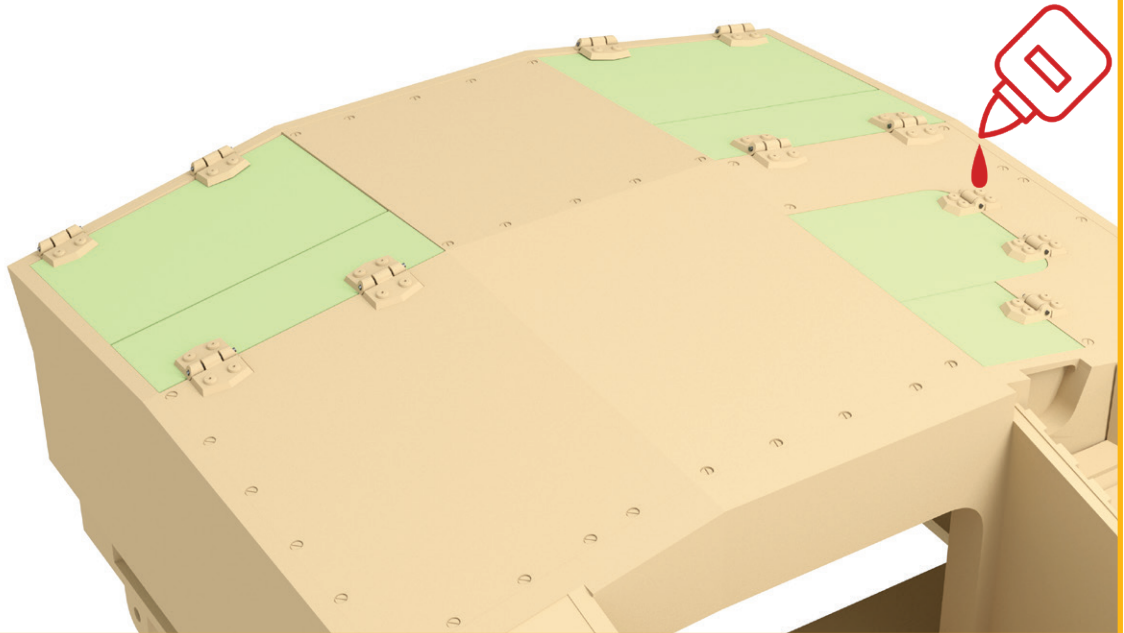
- B-38-4x
- B-39-8x
- B-40-4x
- B-41-3x
- B-42-3x

Wire 1mm



Soubory:

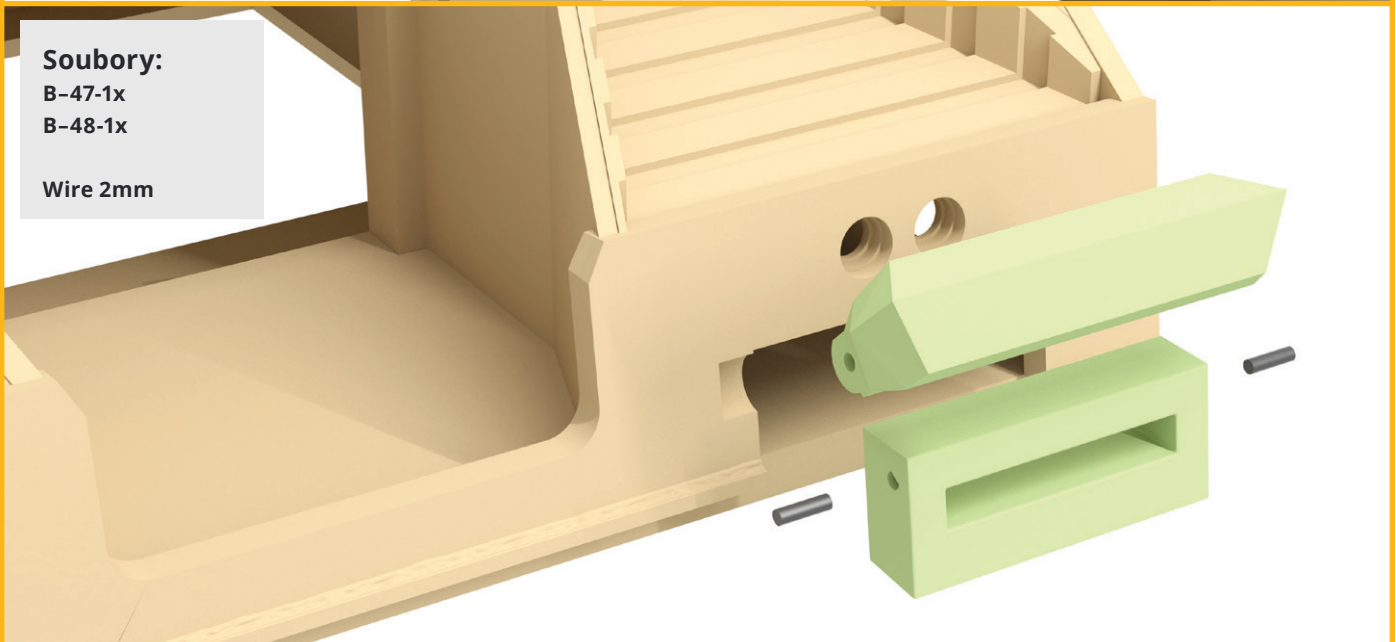
- B-43-right-1x
- B-43-left-1x
- B-44-right-1x
- B-44-left-1x
- B-45-1x
- B-46-1x



Soubory:

- B-47-1x
- B-48-1x

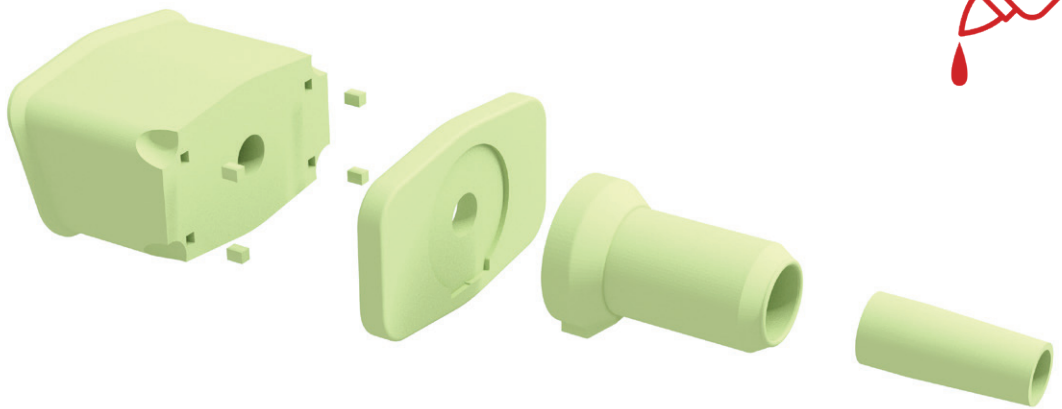
Wire 2mm





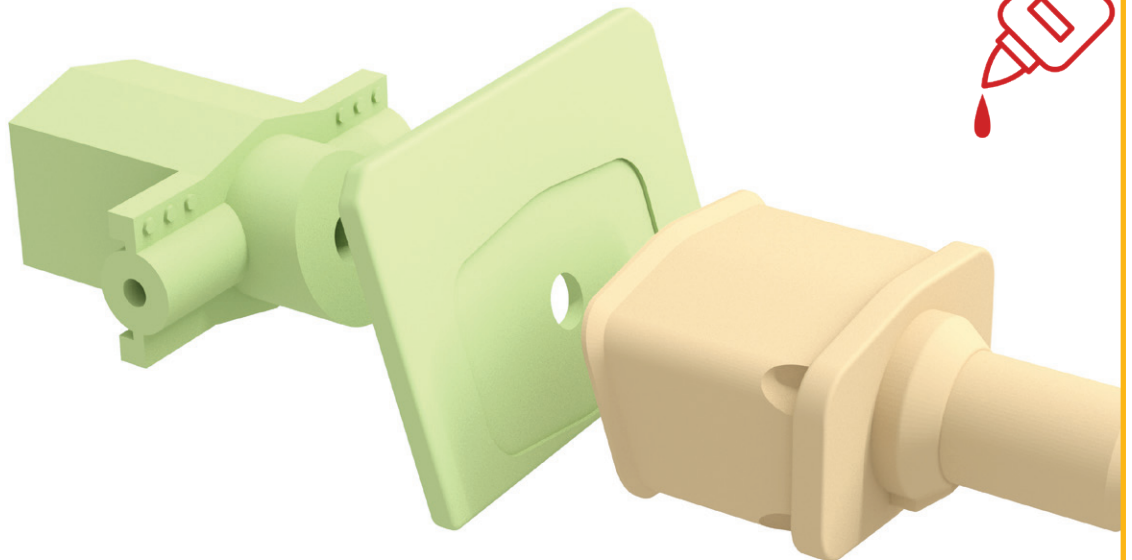
Soubory:

- C-1-1x
- C-2-1x
- C-3-1x
- C-4-1x
- C-5-4x



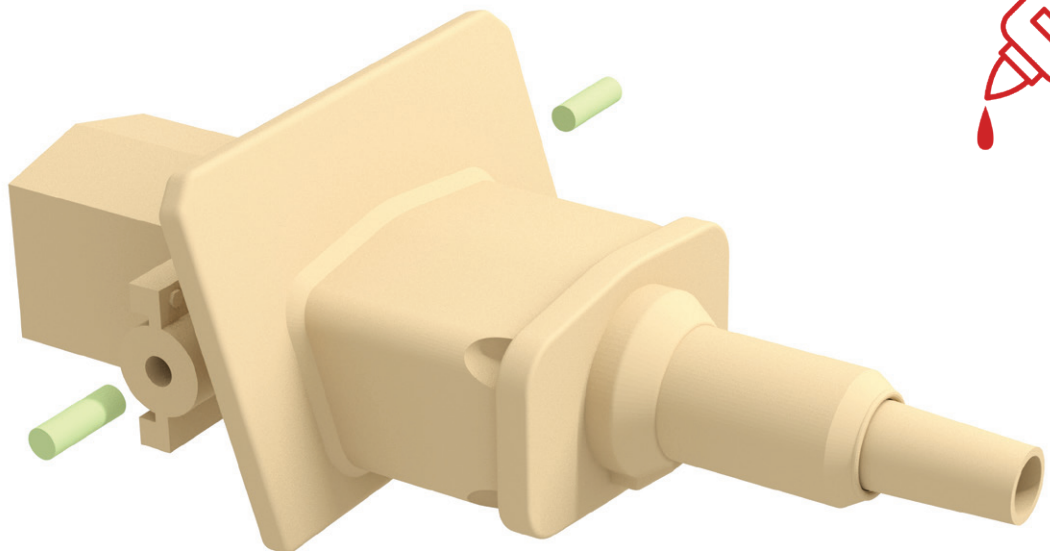
Soubory:

- C-6-1x
- C-7-1x



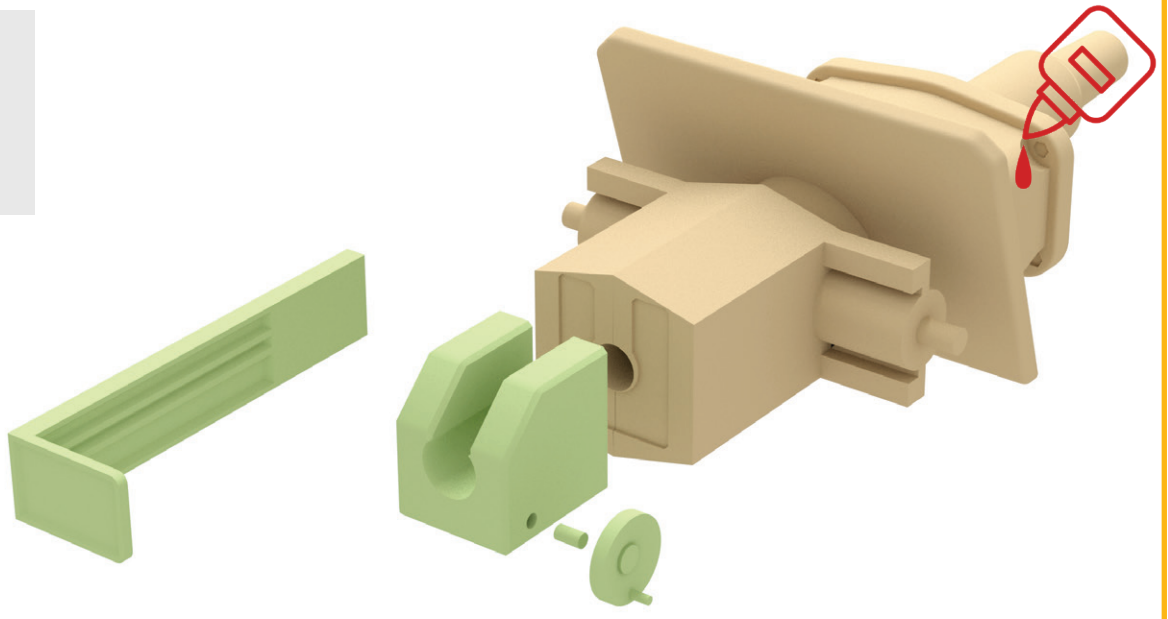
Soubory:

- C-8-2x



Soubory:

- C-9-1x
- C-10-1x
- C-11-1x
- C-12-1x



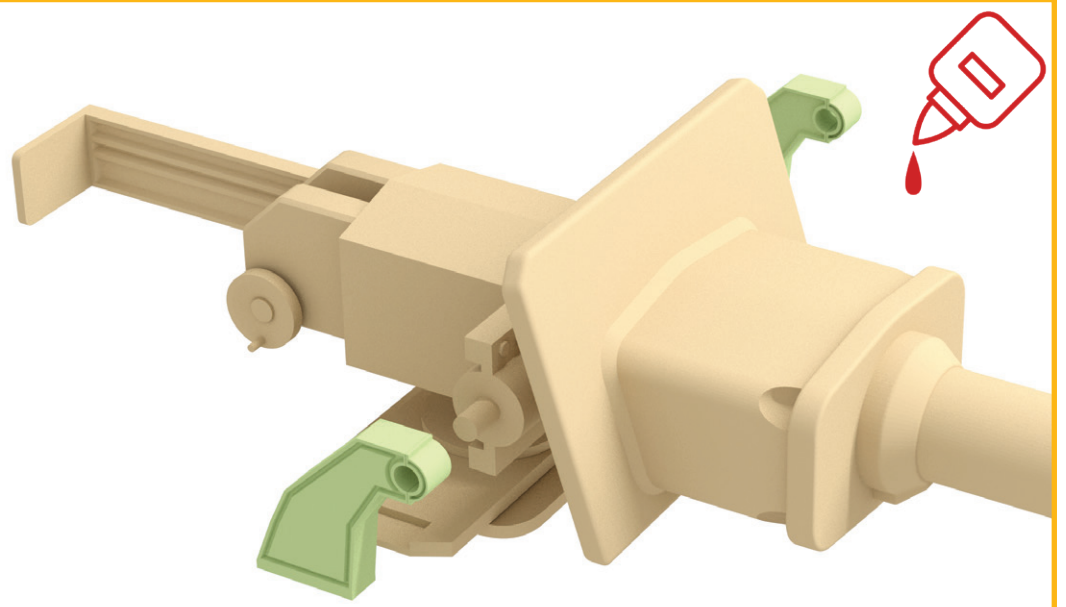
Soubory:

- C-13-1x
- C-14-1x
- C-15-1x

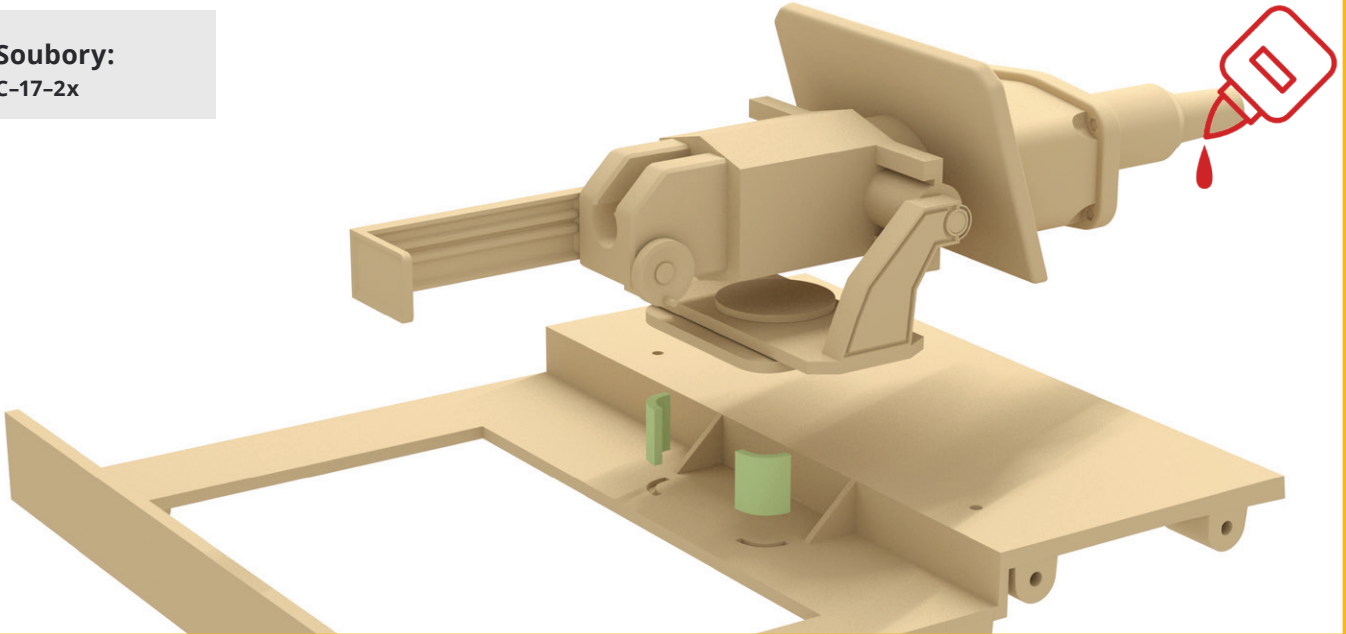


Soubory:

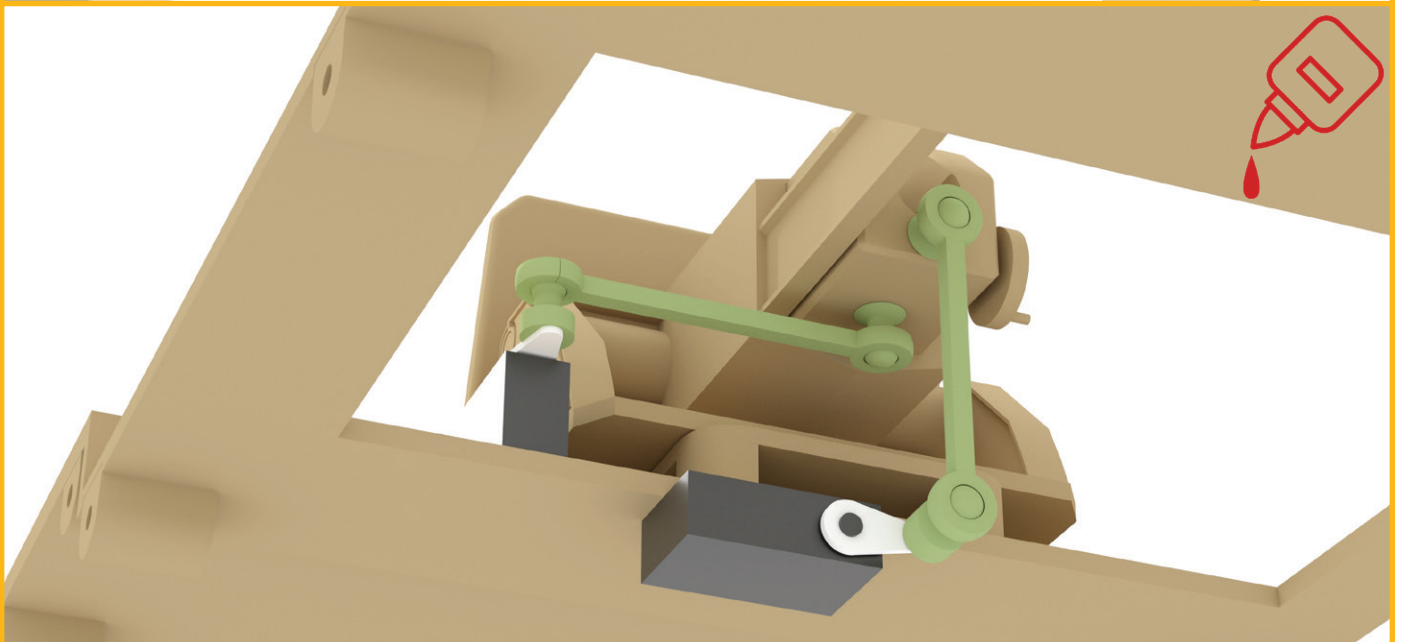
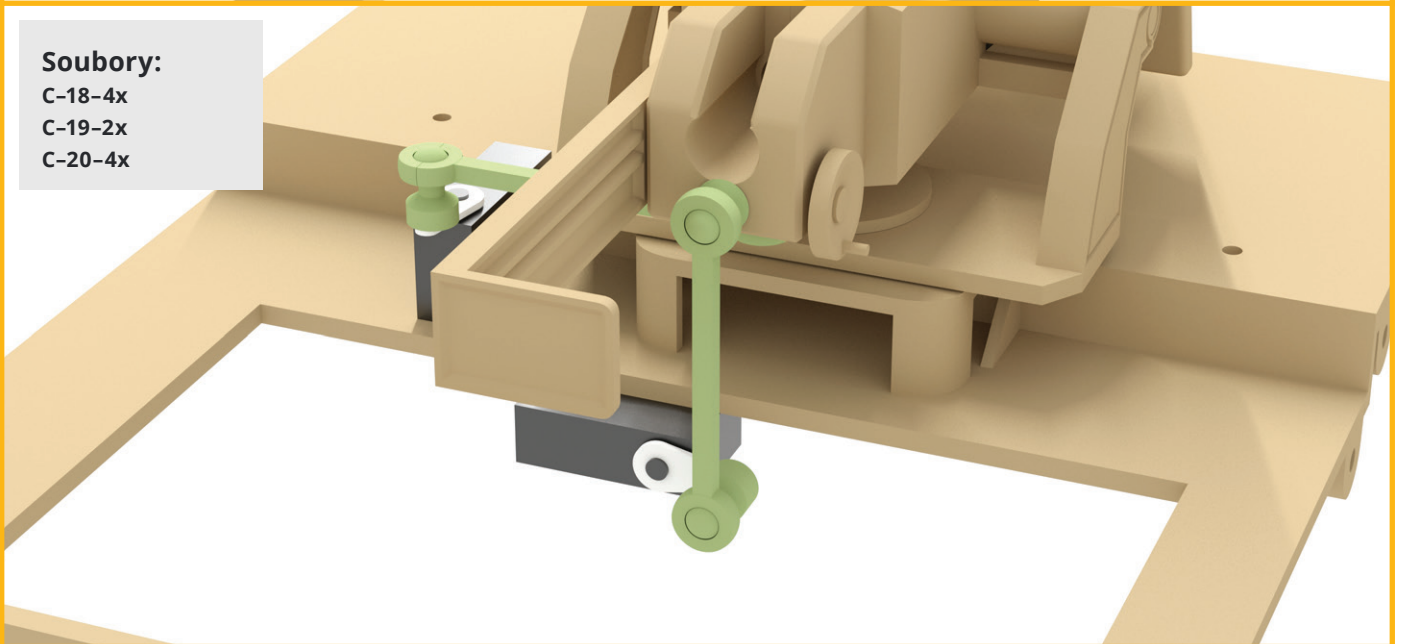
- C-16-right-1x
- C-16-left-1x



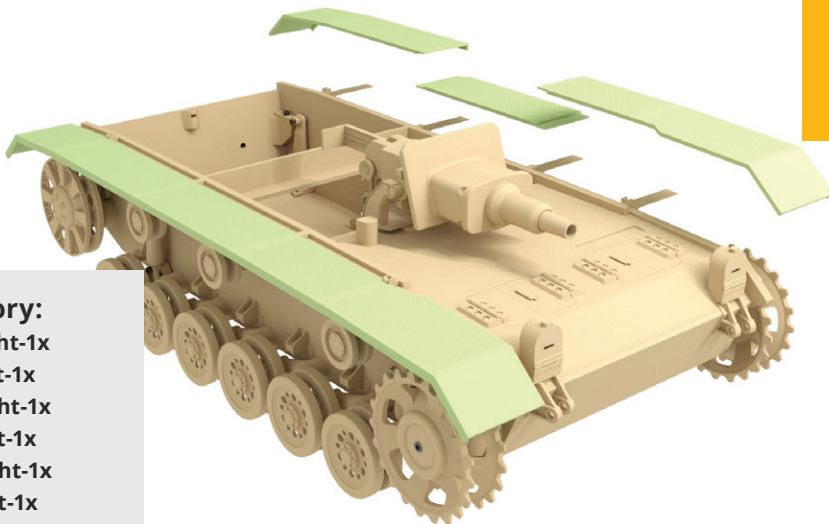
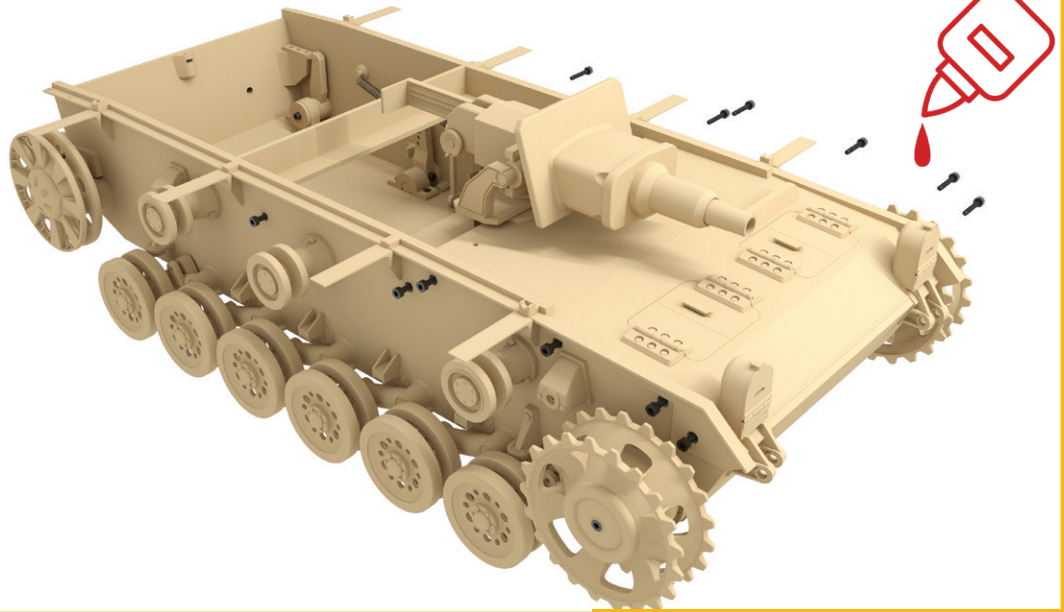
Soubory:
C-17-2x



Soubory:
C-18-4x
C-19-2x
C-20-4x

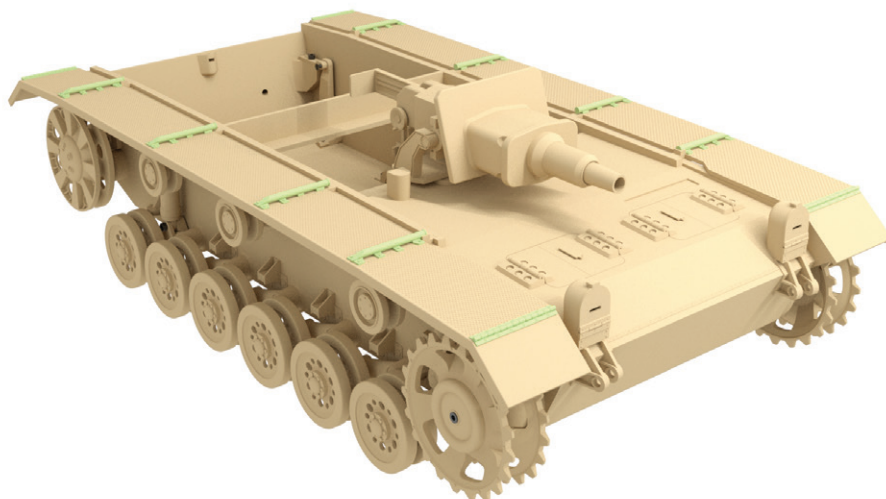


Soubory:
M3 16mm 12x

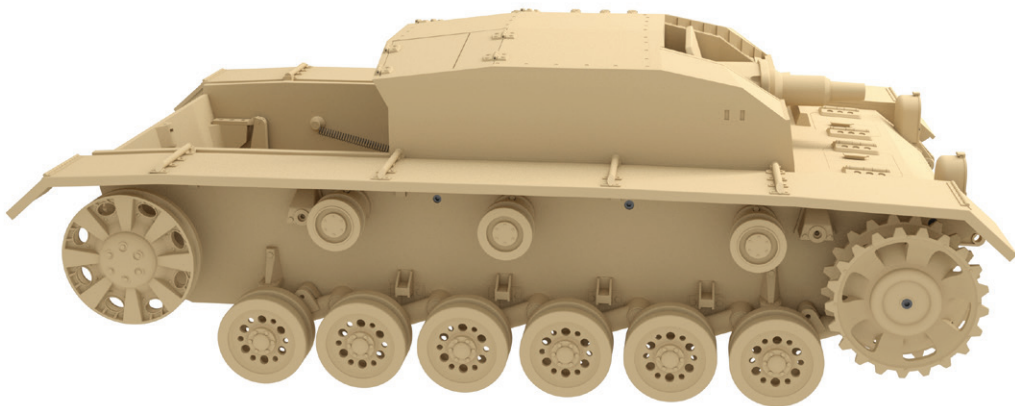
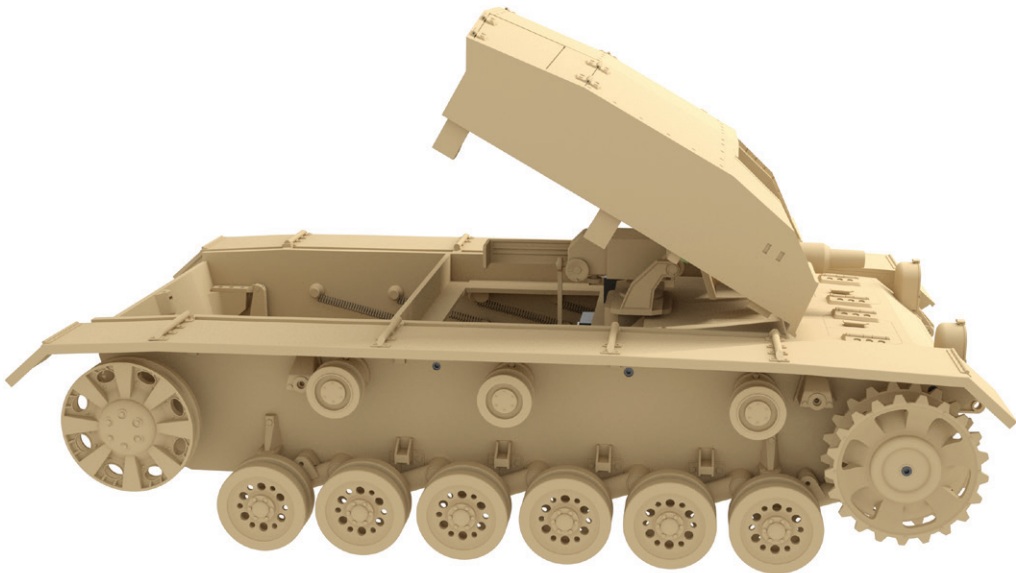
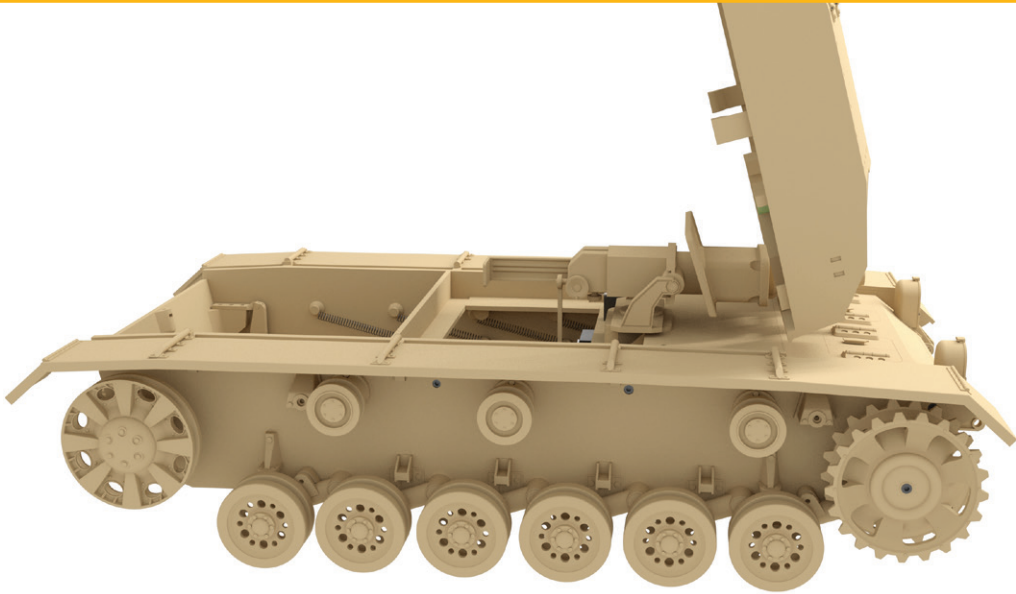


Soubory:
D-1-right-1x
D-1-left-1x
D-2-right-1x
D-2-left-1x
D-3-right-1x
D-3-left-1x

Soubory:
D-4-4x
D-5-4x
D-6-2x
D-7-2x

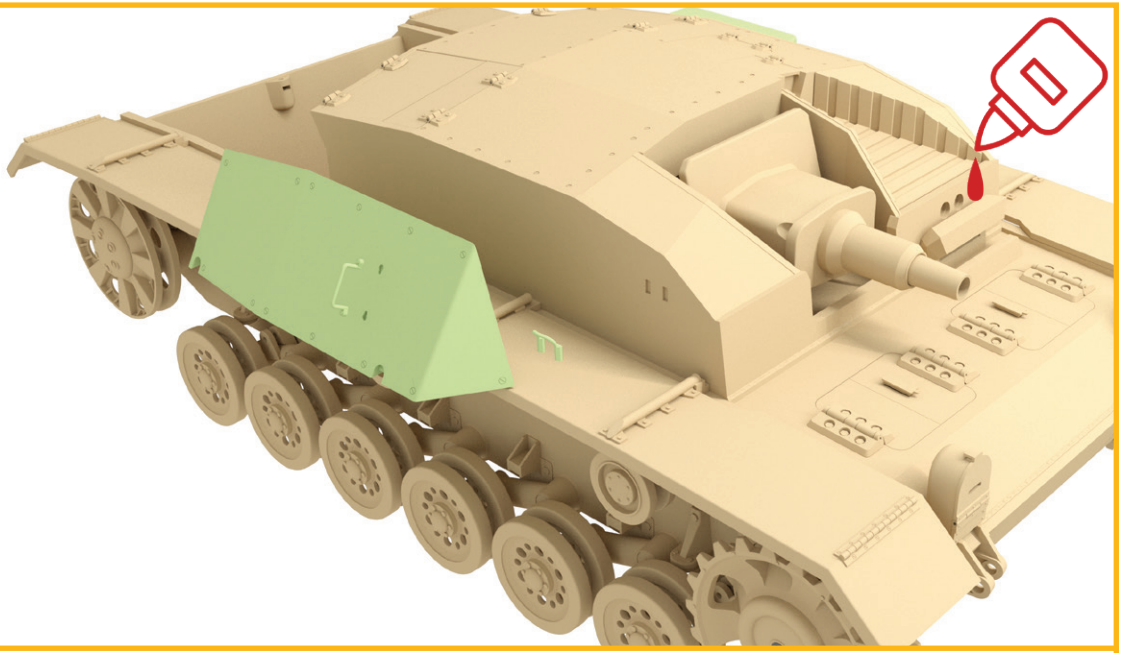


B



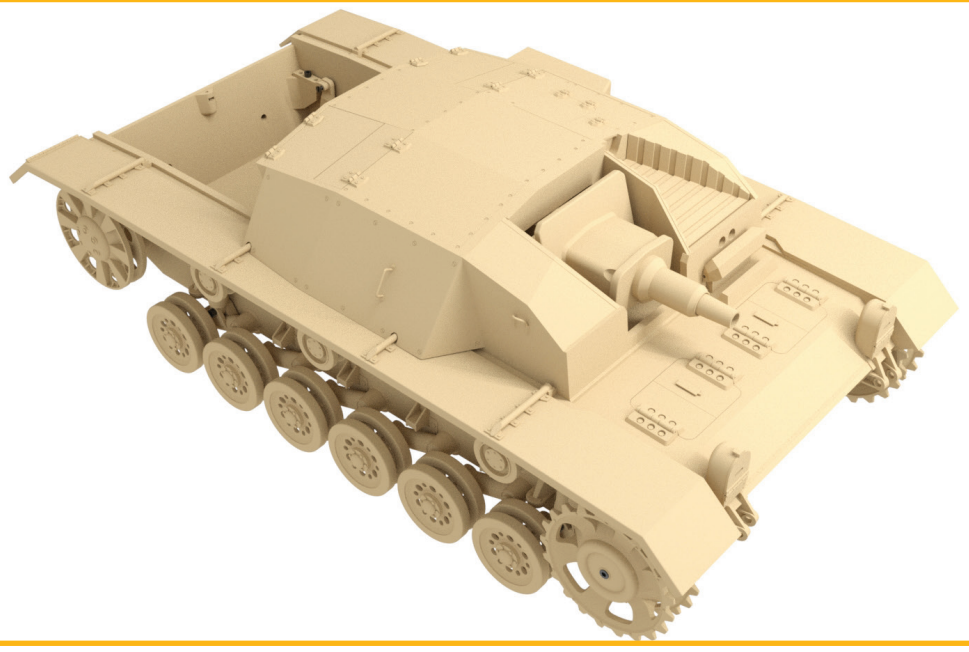
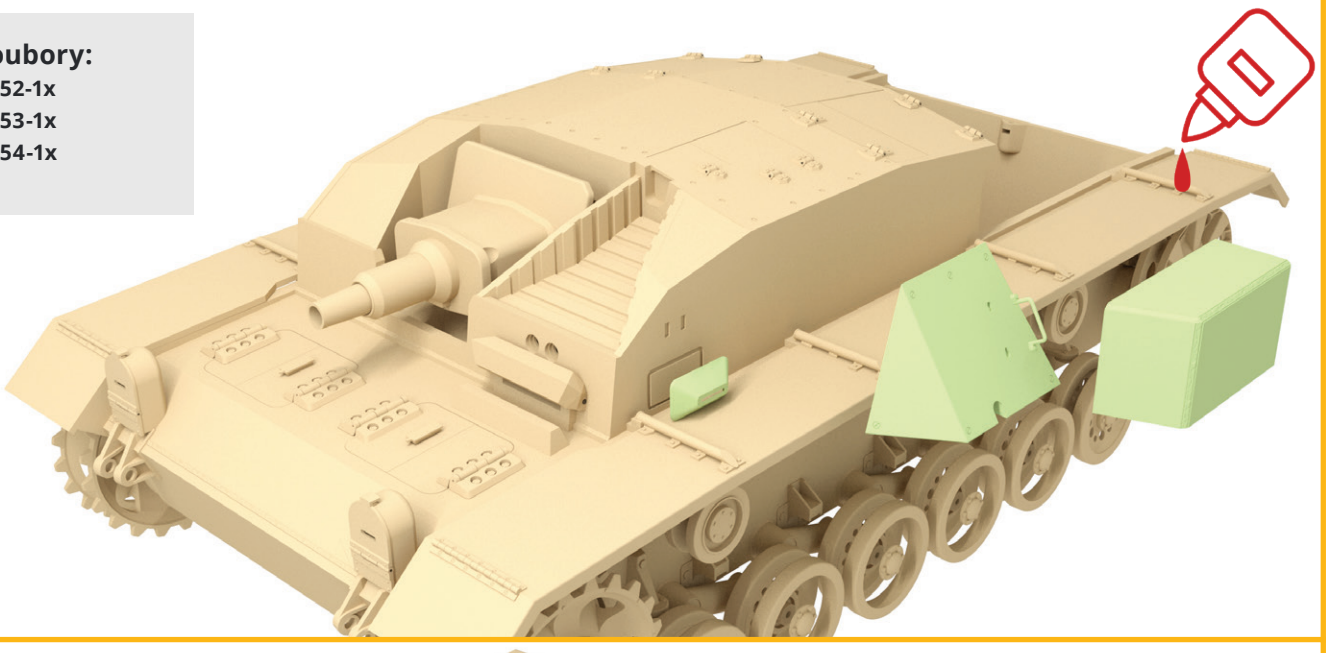
Soubory:

- B-49-1x
- B-50-2x
- B-51-2x



Soubory:

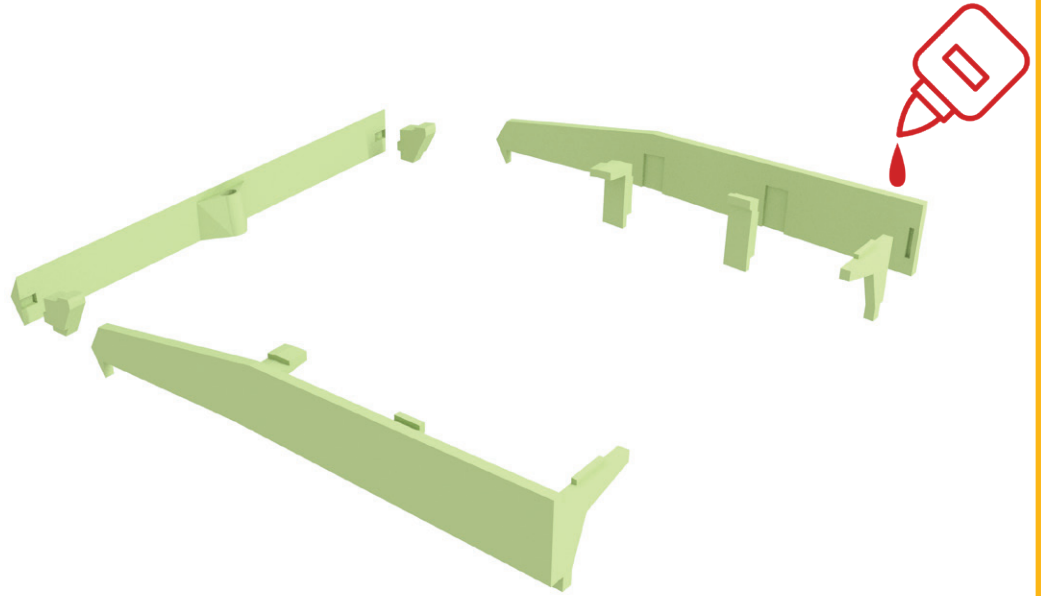
- B-52-1x
- B-53-1x
- B-54-1x



E

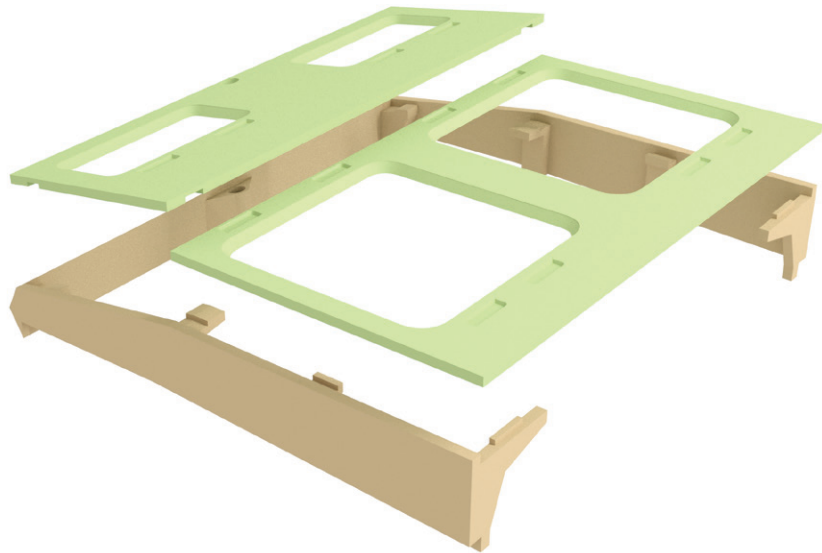
Soubory:

E-1-right-1x
E-1-left-1x
E-2-1x
E-3-right-1x
E-3-left-1x
E-4-right-1x
E-4-left-1x
E-5-right-1x
E-5-left-1x
E-6-right-1x
E-6-left-1x



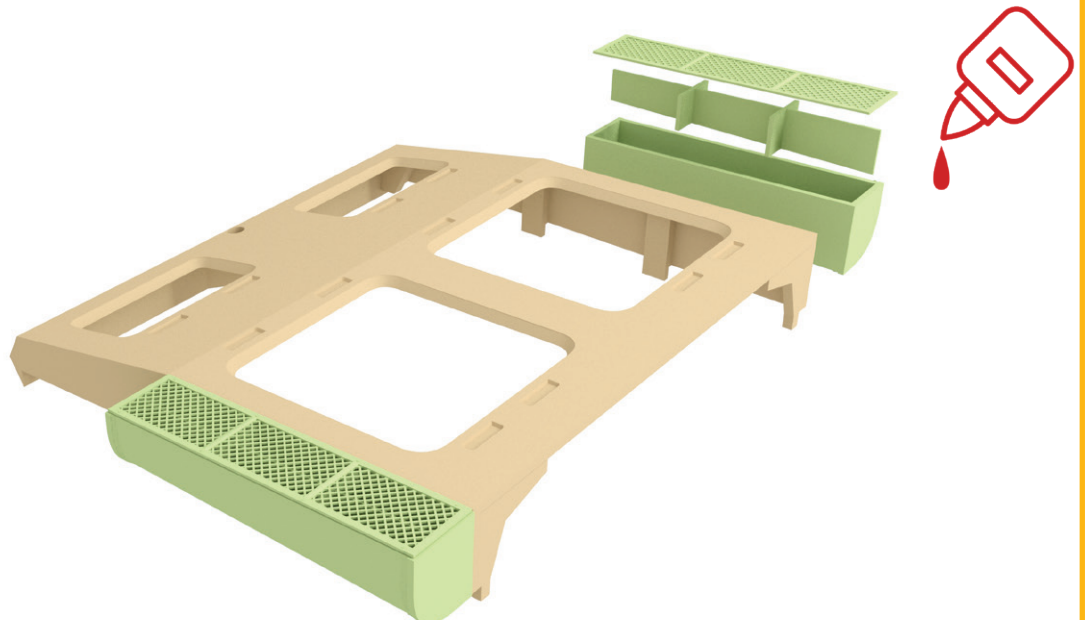
Soubory:

E-7-1x
E-8-1x

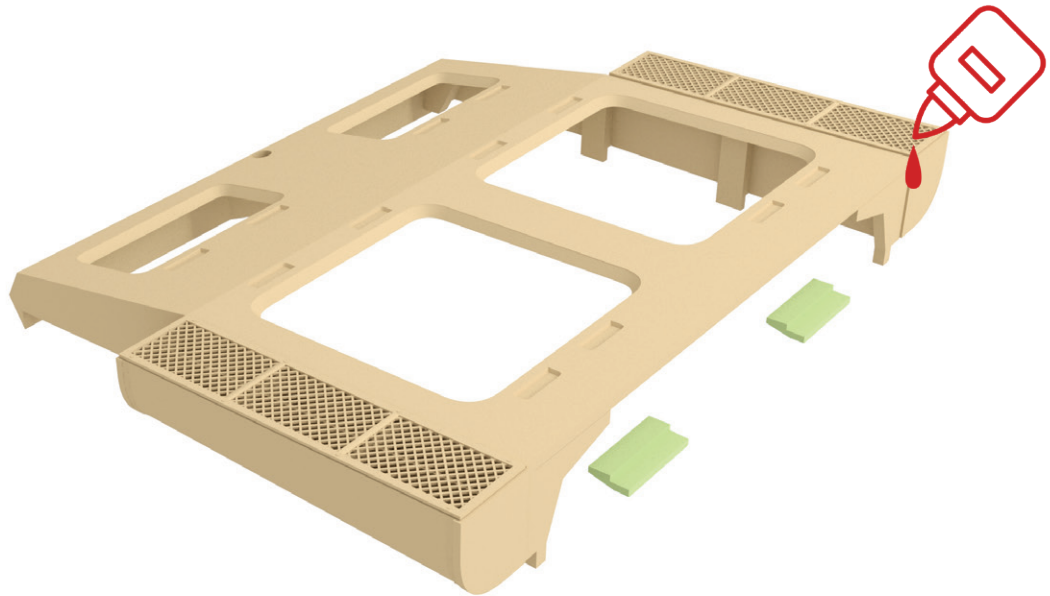


Soubory:

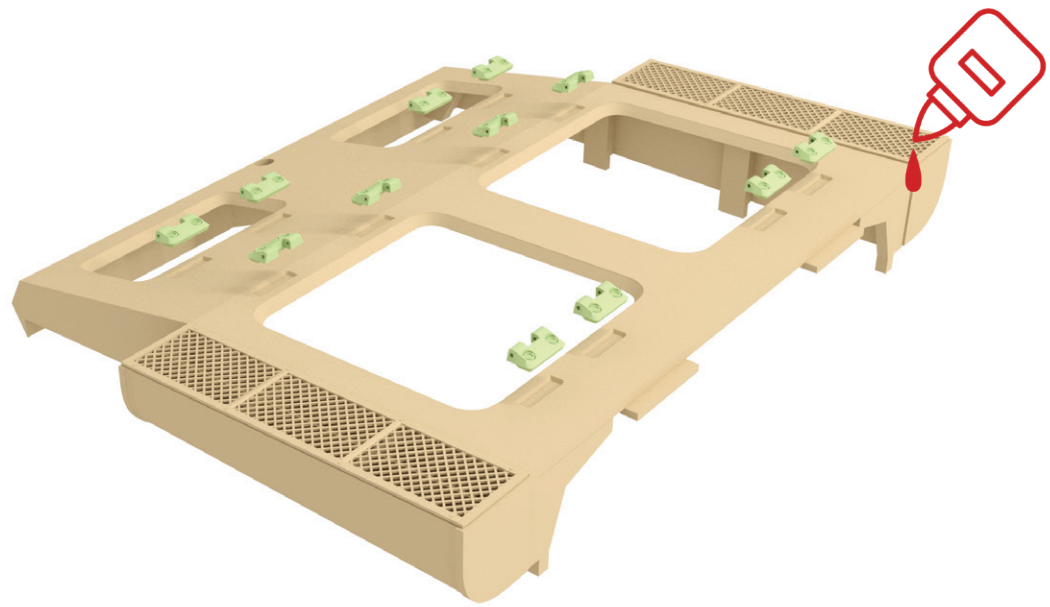
E-9-right-1x
E-9-left-1x
E-10-right-1x
E-10-left-1x
E-11-right-1x
E-11-left-1x



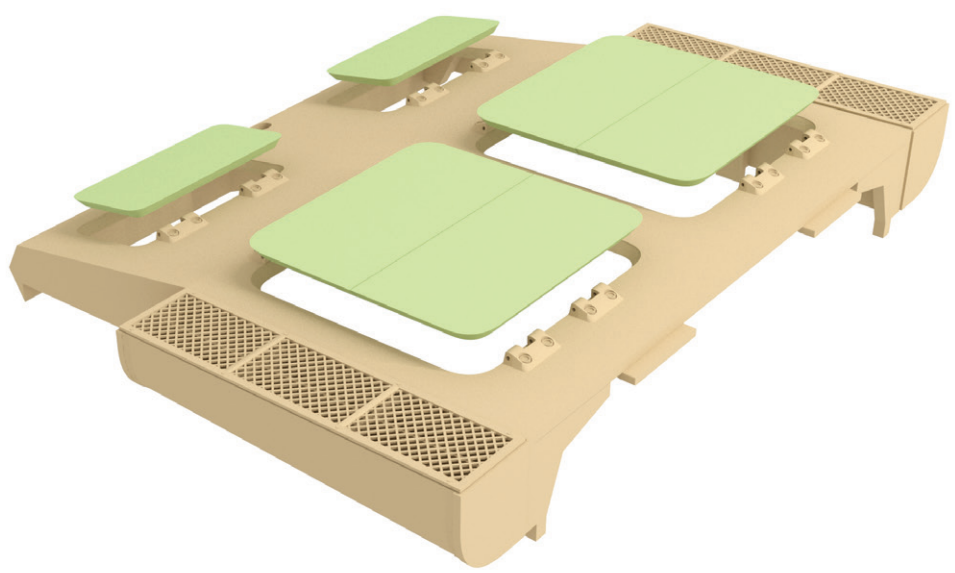
Soubory:
E-12-2x



Soubory:
E-13-12x



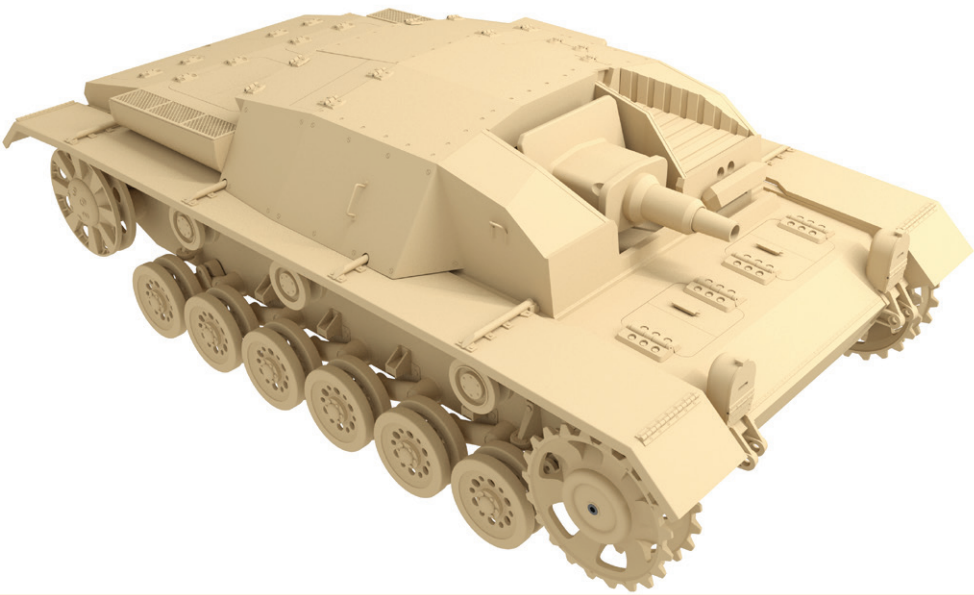
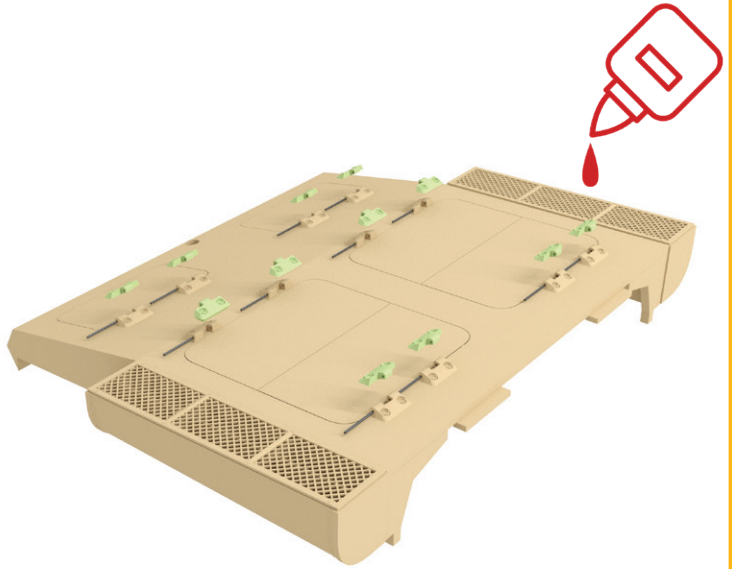
Soubory:
E-14-2x
E-15-2x
E-16-2x



E

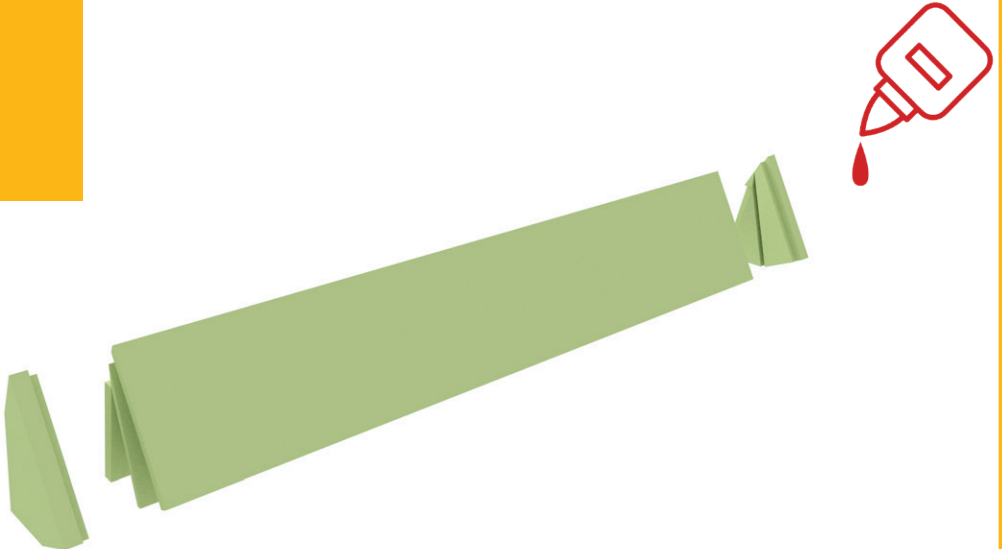
Soubory:
E-17-12x

Wire 1mm



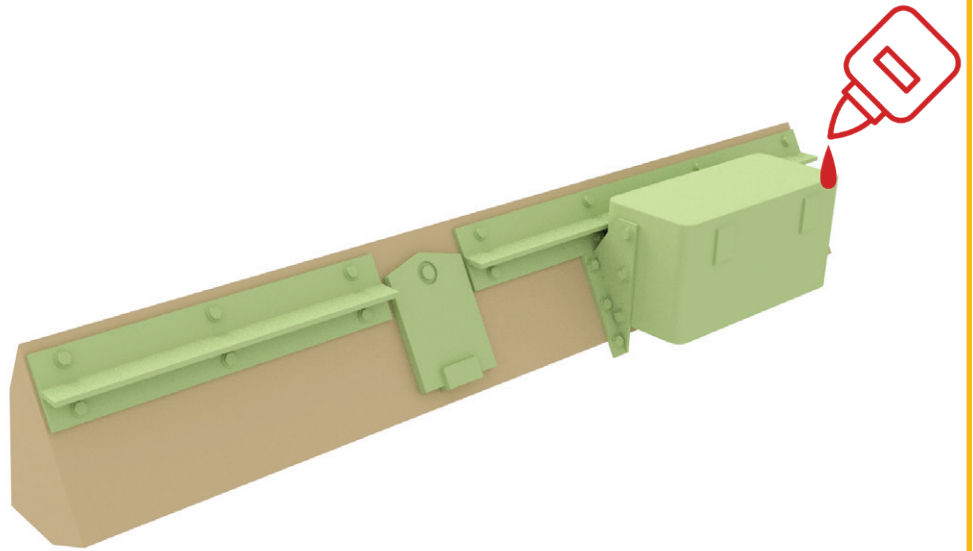
F

Soubory:
F-1-right-1x
F-1-left-1x
F-1-1x
F-2-1x
F-3-1x



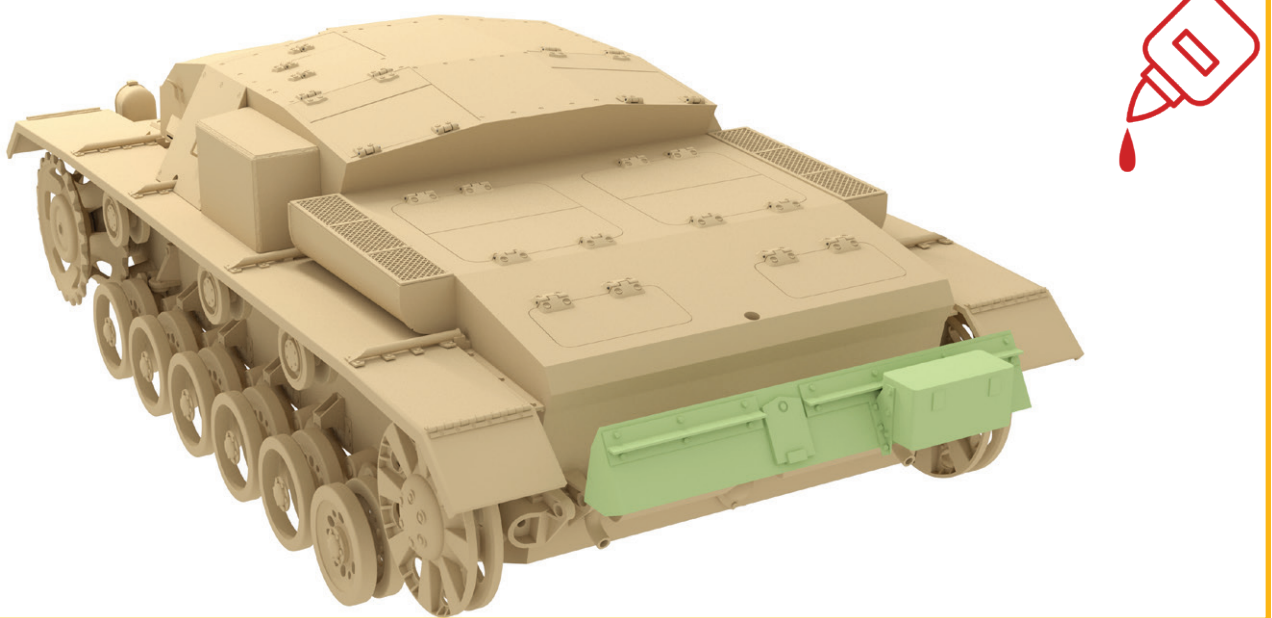
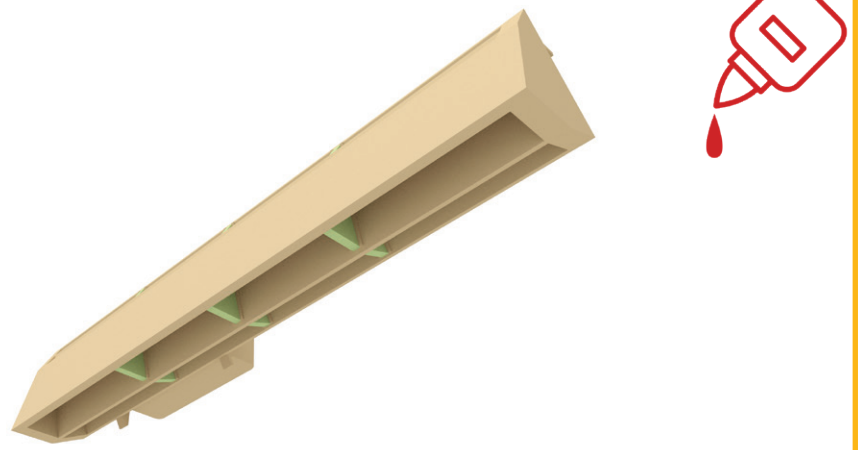
Soubory:

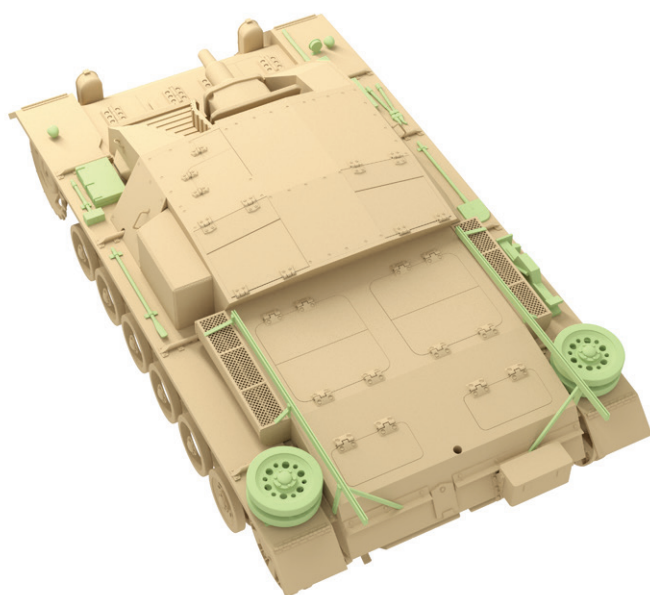
- F-4-1x
- F-5-1x
- F-6-1x
- F-7-1x
- F-8-1x
- F-9-1x
- F-10-1x



Soubory:

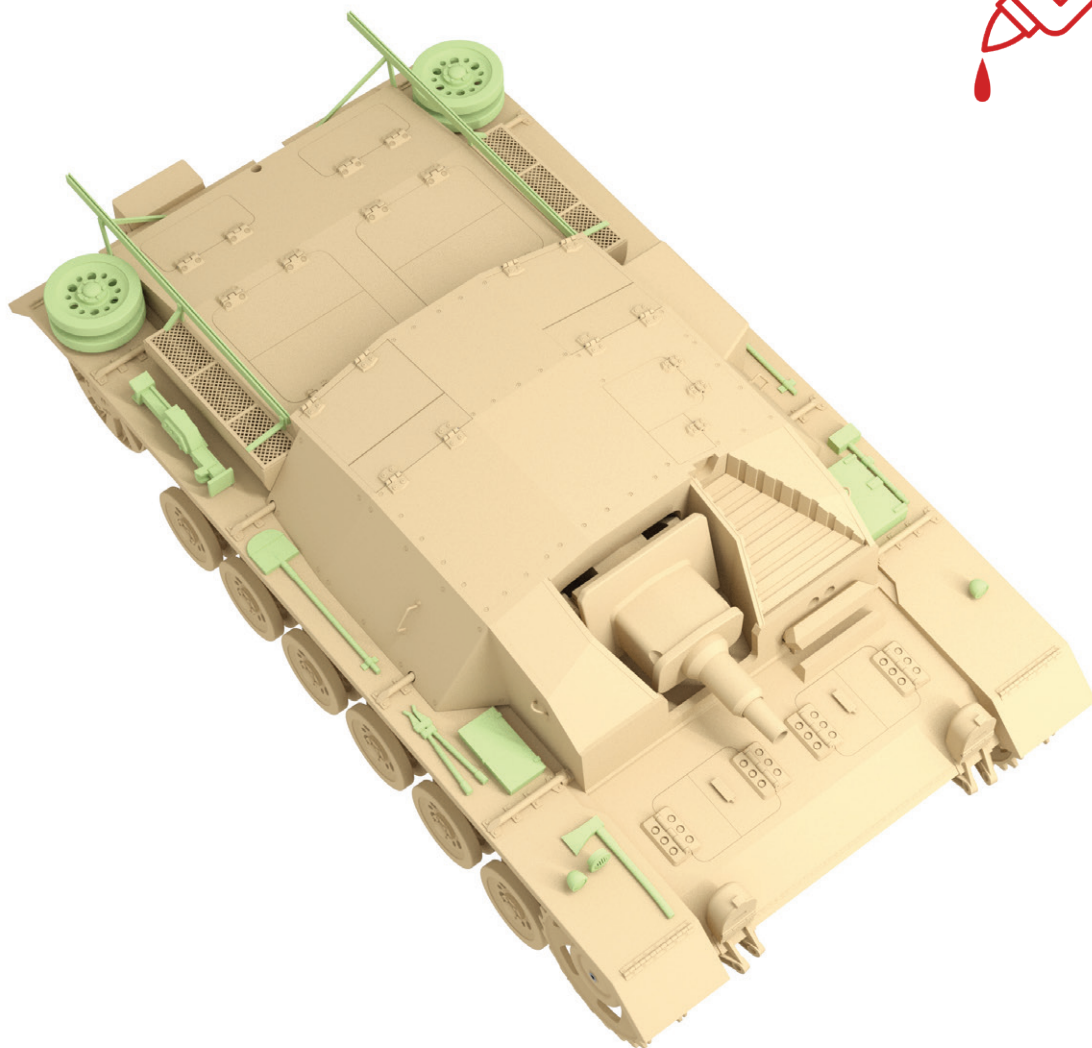
- F-11-3x
- F-12-3x



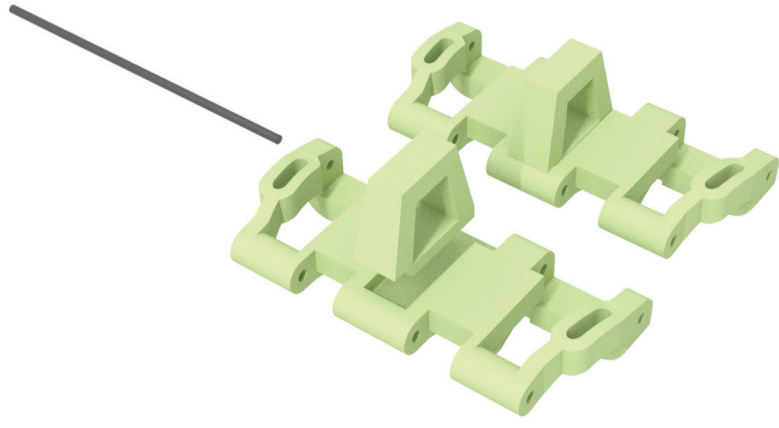


Soubory:

- G-1-2x
- G-2-right-1x
- G-2-left-1x
- G-3-right-1x
- G-3-left-1x
- G-4-right-1x
- G-4-left-1x
- G-5-1x
- G-5-2x
- G-6-1x
- G-7-1x
- G-8-1x
- G-9-1x
- G-10-1x
- G-11-1x
- G-12-1x
- G-13-1x
- G-14-2x
- G-15-2x
- G-15-FLEX-4x
- G-16-2x
- G-17-2x
- G-18-4x
- G-19-2x



Soubory:
H-1-194x
H-2-194x





autor: **Petr Školař**
web: **www.3dtiks.store**
e-mail: **3dtisk@gpstudio.cz**